

Fixings

Our range of fixing products cater for every drywall need, ensuring simple yet secure fixing of plasterboard and metal framing.

The range includes Gyproc screws, engineered for board-to-metal, board-to-timber or metal-to-metal fixing; high performance screws for use with the British Gypsum **FireCase** encasement system and special Gypframe fixings for ceiling, lining and floor systems.



Fixings index

Gyproc fixing products

Gyproc Drywall Screws	538
Gyproc Collated Drywall Screws	538
Gyproc Drywall Timber Screws	539
Gyproc Collated Drywall Timber Screws	539
Gyproc Jack-Point Screws	540
Gyproc Wafer Head Drywall Screws	540
Gyproc Wafer Head Jack-Point Screws	541
Gyproc Nailable Plugs	541

Glasroc fixing products

Glasroc FireCase Screws	542
-------------------------	-----

Gypframe fixing products

Gypframe MF11 Nut and Bolt	542
Gypframe GL11 GypLyner Anchors	543
Gypframe SIF5 Floor Screws	543

Gyproc Drywall Screws



Characteristics

Corrosion resistant self-tapping zinc plated steel screws with countersunk cross-heads. Supplied with screw driver bits.

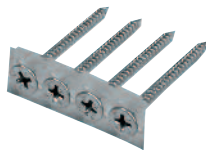
Application

Ideal for fixing 'C' studs (and associated framing) up to 0.79mm thick and 'I' stud framing up to 0.5mm thick. The length of screw selected for a given boarding configuration should be sufficient to give a nominal 10mm penetration into metal framing.

Length mm

22
25
32
36
42
50
60
75
90

Gyproc Collated Drywall Screws



Characteristics

Corrosion resistant self-tapping zinc plated steel screws with countersunk cross-heads. Strips of 50 Collated Drywall Screws supplied in boxes of 1000 screws (20 strips).

Application

Ideal for fixing 'C' studs (and associated framing) up to 0.79mm thick and 'I' stud framing up to 0.5mm thick. The length of screw selected for a given boarding configuration should be sufficient to give a nominal 10mm penetration into metal framing.

Length mm

25
36
42
50

Gyproc Drywall Timber Screws



Characteristics

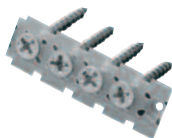
Corrosion resistant self-tapping zinc plated steel screws with countersunk cross-heads. Supplied with screw driver bits.

Application

Ideal for fixing plasterboards to timber framing. The length of screw selected for a given board configuration should be sufficient to give a nominal 25mm penetration into timber framing.

Length mm
32
38
41
51
60

Gyproc Collated Drywall Timber Screws



Characteristics

Corrosion resistant self-tapping zinc plated steel screws with countersunk cross-heads. Strips of 50 Collated Drywall Timber Screws supplied in boxes of 1000 screws (20 strips).

Application

Ideal for fixing plasterboards to timber framing. The length of screw selected for a given board configuration should be sufficient to give a nominal 25mm penetration into timber framing.

Length mm
38
41
51

Gyproc Jack-Point Screws



Characteristics

Corrosion resistant, self-drilling zinc plated steel screws with countersunk cross-heads. The length of the screw selected for a given boarding configuration should be sufficient to give a nominal 10mm penetration into steel framing. Supplied with screw driver bits.

Application

Ideal for fixing plasterboards to stud framing 0.8mm thick or greater and 'I' Studs greater than 0.55mm thick.

Length mm
25
35
41
60

Gyproc Wafer Head Drywall Screws



Characteristics

Corrosion resistant self-tapping zinc plated steel screws with wafer cross-head. Supplied with screw driver bits.

Application

Ideal for metal-to-metal fixing up to 0.79mm thick and 'I' stud framing up to 0.5mm thick.

Length mm
13

Gyproc Wafer Head Jack-Point Screws



Characteristics

Similar to Gyproc Wafer Head Screws, but with self-drilling points. Supplied with screw driver bits included.

Application

Ideal for metal to metal fixing 0.8mm thick or greater and 'T' studs greater than 0.55mm thick.

Length mm
13

Gyproc Nailable Plugs



Characteristics

Combination of masonry nail and plastic wall fixing with expanding tip and countersunk head.

Application

Designed for secondary fixing of Gyproc ThermoLine laminates to masonry backgrounds.

Length mm
60
80
110

Glasroc FireCase Screws



Characteristics

The screws have a unique head design that countersinks into the board allowing easy fixing.

Application

Specifically designed for the fixing of Glasroc FireCase s specialist board in the British Gypsum **FireCase** system.

Length
mm

40
50
58
70

Gypframe MF11 Nut and Bolt



Characteristics

Designed for securing Gypframe MF8 Strap Hanger to Gypframe MF12 Soffit Cleat.

Application

For use in the British Gypsum **CasoLine MF** ceiling system.

Length
mm

6 x 12mm

Gypframe GL11 GypLyner Anchors



Characteristics

Hammer-in fixing with wide flange to avoid the need for a separate washer.

Application

Designed especially for fixing Gypframe GL2 or GL9 Brackets to masonry walls and concrete soffits, subject to loading.

Length
mm

40

Gypframe SIF5 Floor Screws



Characteristics

Electro-zinc plated, self-tapping screws with countersunk heads.

Application

For use in the **GypFloor SILENT** acoustic floor system. Suitable for fixing timber flooring through Gyproc Plank into Gypframe SIF Floor Channel flange.

Length
mm

55