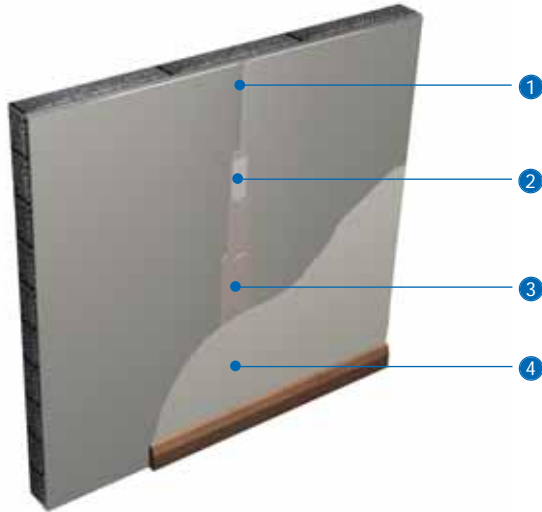


Jointing

Gyproc jointing materials produce a smooth, continuous, crack-resistant lining surface ready for priming and final decoration. A number of jointing specifications are available to suit the board type, site preference and method of application - manually using hand tools or mechanically using Gyproc Speed Tape tools. After joint treatment has dried, the complete lining surface is treated with Gyproc Drywall Primer to prepare it for application of paint. Gyproc Drywall Sealer can be used in one coat to allow steam stripping of wall coverings, or in two coats to provide water vapour control.





- 1 Tapered edge plasterboard
- 2 Gyproc Joint Tape
- 3 Gyproc jointing materials
- 4 Gyproc Drywall Primer or Gyproc Sealer

Key facts






- Produces seamless surface ready for decoration
- Choice of jointing materials to suit user preference
- Mechanically applied materials ideal for larger areas
- Ready-mixed or dry powder options
- ConstructionSkills grant-approved training

Components

Fixing and finishing products

| | | Quantities ¹ per 100m ² |
|---|---|--|
|  | Gyproc Joint Filler For seamless plasterboard joints and angles. Bag weight 12.5kg | 25kg Finishing coat |
|  | Gyproc Joint Cement For seamless plasterboard joints and angles. Bag weight 22.5kg | 12kg All coats 35kg |
|  | Gyproc Ready Mix Joint Cement For seamless plasterboard joints and angles. Tub contents 12 litre | 2.5 - 3 tubs |
|  | Gyproc Promix LITE Joint Cement For seamless plasterboard joints and angles. Tub contents 17 litre | 2 tubs |
|  | Gyproc Easi-Fill For seamless plasterboard joints and angles. Bag weight 10kg | 25kg |
|  | Gyproc Easi-Fill 45 For seamless plasterboard joints and angles. Bag weight 10kg | 25kg |

Fixing and finishing products

| | | Quantities ¹ per 100m ² |
|---|--|--|
|  | Gyproc Joint Tape For reinforcing plasterboard joints and internal angles. Roll length 150m | 150 m |
|  | Gyproc Corner Tape For reinforcing external, inc. splayed, angles. Roll length 33m | as required |
|  | Thistle ProTape FT50 For reinforcing plasterboard joints. Dimensions 50mm x 90m | 150 m |
|  | Thistle ProTape FT100 For reinforcing internal angle joints. Dimensions 100mm x 45m | as required |
|  | Gyproc Drywall Metal Angle Bead For external angle reinforcement. Length 3000mm | as required |

¹ Quantities are approximate and for guidance only, no allowance has been made for waste.

| Fixing and finishing products | Quantities [†] |
|--|-------------------------|
|  <p>Gyproc Drywall Archbead For arch reinforcement. Length 3000mm</p> | as required |
|  <p>Gyproc Drywall Metal Edge Bead Forms a defined edge to plasterboard areas. Length 2400 or 3000mm</p> | as required |
|  <p>Gyproc Drywall Plastic Edge Bead Forms a defined edge to plasterboard areas. Dimensions 12.5 x 3000mm</p> | as required |
|  <p>Gyproc No-Coat Ultraflex 325 Impact-resistant joint reinforcement, with a hinged co-polymer core to fit an internal or external angle joint. Length 30m roll</p> | as required |
|  <p>Gyproc Control Joint For providing an allowance for movement up to 7mm. Length 3048mm</p> | as required |

| Fixing and finishing products | Quantities [†] | | | | |
|--|--|-------|--------|--------|-------------|
|  <p>BGM105 Edge Reveal</p> <table border="1"> <thead> <tr> <th>Width</th> <th>Depth</th> </tr> </thead> <tbody> <tr> <td>25mm</td> <td>10mm</td> </tr> </tbody> </table> | Width | Depth | 25mm | 10mm | as required |
| Width | Depth | | | | |
| 25mm | 10mm | | | | |
|  <p>BGM106 Edge Reveal</p> <table border="1"> <thead> <tr> <th>Width</th> <th>Depth</th> </tr> </thead> <tbody> <tr> <td>12.5mm</td> <td>10mm</td> </tr> </tbody> </table> | Width | Depth | 12.5mm | 10mm | |
| Width | Depth | | | | |
| 12.5mm | 10mm | | | | |
|  <p>BGM119 Edge Stop</p> <table border="1"> <thead> <tr> <th>Width</th> <th>Depth</th> </tr> </thead> <tbody> <tr> <td>-</td> <td>12.5mm</td> </tr> </tbody> </table> | Width | Depth | - | 12.5mm | |
| Width | Depth | | | | |
| - | 12.5mm | | | | |
|  <p>Gyproc Drywall Primer Used to prepare for painting. Tub contents 10 litre</p> | 110m ² per tub | | | | |
| <p>or</p>  <p>Gyproc Drywall Sealer Used to provide vapour control. Tub contents 10 litre</p> | 110m ² per tub (1 coat) 70m ² per tub (2 coats) | | | | |
|  <p>Gyproc drywall tools A range of hand tools and Gyproc Speed Tape mechanical jointing tools and equipment.</p> | as required | | | | |

| Table 1 - Combinations and average coverage data (kg / 100 linear metre of joint) | | | | | |
|---|-------------------------|--------------------------------------|-----------------|-----------------|-----------------|
| Jointing system | Reinforcement | Taping coat | 1st finish coat | 2nd finish coat | 3rd finish coat |
| | | coverage kg / 100 lm (linear metres) | | | |
| Flat joint (tapered edge - hand applied) | Paper tape / fibre tape | 12 | 6 | 6 | - |
| | | 12 | 6 | 6 | - |
| | | 12 | 6 | 6 | - |
| | | 9 | 5 | - | - |
| Flat joint (tapered edge - mechanical) | Paper tape | 6 | 6 | 6 | 3 |
| Flat joint (square edge) | Paper tape | 3 | 12 | - | - |
| External angle | Corner tape | 22 | 9 | 9 | - |
| | | 22 | 9 | 9 | - |
| | | 18 | 9 | - | - |
| | Metal bead | 34 | 9 | 9 | - |
| | | 34 | 9 | 9 | - |
| | | 28 | 12 | - | - |
| Internal angle | Paper tape | 12 | 8 | 8 | - |
| | | 12 | 8 | 8 | - |
| | | 12 | 8 | 8 | - |
| | | 10 | 5 | - | - |

Notes to Table 1

These quantities should be used as a guide only - quantities used will vary depending on tools used and accuracy of board alignment.

Material used for pre-filling gaps, repairing damage, screw-spotting, etc is not included.

When using a ready mix joint cement in place of powder, assume 1 litre is equivalent to 0.85kg of powder joint cement.

An allowance for waste and material sanded away should be added as appropriate.

External angle reinforcements should be fixed using a setting product - Gyproc Joint Filler or Gyproc Easi-Fill / Easi-Fill 45, except Glasroc MultiBoard and Glasroc FireCase s (see 'Jointing Glasroc FireCase s and Glasroc MultiBoard', later).

KEY:

Gyproc Joint Filler

Gyproc Joint Cement

Gyproc Easi-Fill / Easi-Fill 45

Table 2 – Joint reinforcement

| | Flat joints | Internal angles | External angles | Splayed angles |
|-----------------------|-------------|-----------------|-----------------|----------------|
| Gyproc Joint Tape | ✓ | ✓ | | |
| Thistle ProTape FT50 | ✓ | | | |
| Thistle ProTape FT100 | | ✓ | | |
| Gyproc Corner Tape | | | ✓ | ✓ |
| Gyproc Angle Bead | | | ✓ | |
| No-Coat Ultraflex 325 | | ✓ | ✓ | ✓ |

Construction tips

- Ensure that boards are securely fixed with no steps between adjacent boards. The correct fixings must be used and properly located
- Drive home any protruding screw heads using a hand screwdriver prior to spotting and jointing
- Ensure site conditions are suitable: jointing materials must not be used at, or subjected to, temperatures below the minimum specified on packaging during application, setting or hardening
- Pre-fill gaps between boards greater than 3mm, prior to taping with Gyproc Joint Tape
- Select the right jointing material(s) (see **Table 1**). Note that Gyproc Easi-Fill 45 is only suitable for hand application
- Choose between hand or mechanical application
- Choose joint reinforcement method (see **Table 2**)
- To achieve a smooth continuous crack-resistant surface, use of tapered edge plasterboard and Gyproc Joint Tape is widely regarded as best practice

Installation – Hand



Hand jointing

- Bed Gyproc Joint Tape firmly into the appropriate grade of Gyproc jointing compound.

NB If Thistle ProTape FT50 is used, bedding is not required but the filling material should be pressed through the holes in the tape, particularly if there is a gap between the board joints. This is important to achieve a satisfactory appearance to the finished joint.



- Trowel apply two or three applications of jointing compound, allowing each to set or dry before the next application, feathering each out beyond the previous application.
- Make an equal number of applications to screw / nail spots.
- Sand each joint application as required to achieve a smooth surface.

NB Setting materials (e.g. Gyproc Joint Filler, Gyproc Easi-Fill) can be overcoated when set but not dry. Air-drying materials (joint cements) must be dry before overcoating.



NB At board joints, where cut edges or square edge boards occur, the joint treatment is inevitably raised above the board surface and is more difficult to conceal. In this situation the secondary filling stage is omitted, and joint treatment is feathered out further in order to conceal the joint.



- At internal angles, crease Gyproc Joint Tape to the angle to provide reinforcement and bed firmly into jointing material using a taping knife and feather out.
- Allow jointing material to dry then lightly sand, if required, to remove any minor imperfections.
- Apply final coat of jointing material and feather out beyond previous application.
- Allow to dry, then lightly sand.



5

- At external angles use Gyproc Corner Tape or Gyproc No-Coat Ultraflex 325, or where additional protection is required, use a Gyproc angle bead instead.

- Use a Gyproc edge bead to protect cut ends of boards (e.g. at abutments).

NB Use a setting compound (Gyproc Joint Filler or Gyproc Easi-Fill) except Glasroc FireCase s and Glasroc MultiBoard, see later.



6

- Apply Gyproc Drywall Primer or Gyproc Drywall Sealer to the entire board surface and jointed areas to prepare the lining for final decorative treatment.

NB Remove any surface dust and ensure background is dry prior to application.

Installation – Mechanical



1

Mechanical jointing

- Gyproc Speed Tape tools can be used as an alternative to hand jointing, to provide a fast, consistent finish using 175mm, 250mm and 300mm boxes as appropriate.



- A full range of tools and ConstructionSkills approved training are available:-

For Gyproc Tools, contact BPB Artex,
Tel: 0800 032 6345.

For training enquiries, contact the British
Gypsum Drywall Academy Training Centre
Tel: 0844 561 8810.



Joining Glasroc FireCase s and Glasroc MultiBoard

- Trowel apply Gyproc Joint Cement to the joint and bed in Gyproc Joint Tape.
- Alternatively, for flat joints, apply Thistle ProTape FT50 over the joint and trowel apply a coat of Gyproc Joint Cement.
- Allow to dry and lightly sand if required, to remove any high spots.
- Trowel apply a second coat of Gyproc Joint Cement and feather-out to about 200mm width on each side of the joint.

- Allow to dry and lightly sand.
 - A third application of Gyproc Joint Cement may be necessary, applied as for the second and slightly wider, for example if the boards were fixed with any steps, gaps or minor damage.
 - Use Gyproc Joint Tape at internal corners and Gyproc Corner Tape at external corners.
- NB** For the FireCase system, external angles / corners can be reinforced using Gyproc No-Coat Ultraflex 325 bedded in Gyproc Joint Cement.



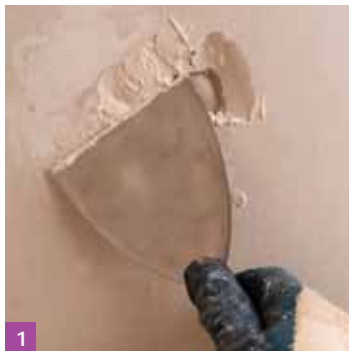
- Across the width of the board, bed Gyproc Joint Tape firmly into Gyproc Easi-Fill and bulk fill the taper edge joints.



- When set, apply a finish coat of Gyproc Easi-Fill to all joints.
- Take care not to fill the perforations in the board and thereby impair the sound absorption performance.
- Lightly sand and dust-off.
- Apply Gyproc Drywall Primer to the entire surface ready for decoration, using a brush or roller. Boards should not be spray painted as this affects sound absorption performance.

Jointing Arteco Gyptone boards

- Arteco Gyptone boards are supplied with all four edges tapered to allow for true flat joints to be created at each board interface, to give a perfectly flat finished ceiling.
- Along the board length, bed Gyproc Joint Tape firmly into Gyproc Easi-Fill and bulk fill the taper edge joints.



Cleaning equipment

- Clean all equipment thoroughly after use. Small residual amounts of set or part-set material can accelerate the set of freshly mixed jointing compound.

Maintenance and repair of plasterboard

- British Gypsum linings and membranes are essentially non-demountable. No special maintenance is required other than a normal surface decoration regime.

Minor damage

- Lightly sand the surface to remove any burrs and fill flush with Gyproc Easi-Fill or two applications of Gyproc Joint Cement.
- When dry, apply Gyproc Drywall Primer or Gyproc Drywall Sealer to leave the surface ready for decoration.

Deep indents resulting from impact

- Check the plasterboard core to ensure that it is not shattered. Carry out this check even if the paper is not fractured.
- If intact, repair the damaged area as for minor damage, but firstly apply a coat of Gyproc Joint Filler or Gyproc Easi-Fill, followed by Gyproc Joint Cement or Gyproc Easi-Fill once set/dry.



Damaged core/broken edges

- Remove the damaged area of core.
- Lightly score the liner approximately 10mm away from the damaged area, and peel the paper surface away.
- Apply Thistle GypPrime or PVA to seal the core and surrounding liner.
- Bulk fill the hole with a stiff mix of Gyproc Easi-Fill or Gyproc Joint Filler, and strike off flush.

- Apply Gyproc Easi-Fill, or two applications of Gyproc Joint Cement once the filler is set/dry.
- When dry, apply Gyproc Drywall Primer or Gyproc Drywall Sealer.

Extensive damage to linings and membrane

When the damage is more extensive it may be necessary to replace that area of plasterboard. It is important that the replacement board is of the same type as specified and installed.



- Cut out the affected area back to the nearest framing member.
- Fix additional framing member as necessary to ensure all joints are fully supported.



- Replace the plasterboard, accurately cutting and screw-fixing the same type and thickness of plasterboard.
- Fill edge joints, then tape and finish in the recommended manner.
- Treat the finished surface with Gyproc Drywall Primer, or two coats of Gyproc Drywall Sealer where previously specified for vapour control purposes.
- Redecorate as required.

Damage to framing

- Where damage has occurred to metal framing, it will need to be replaced as per the system specification prior to re-boarding.

Decoration

- After the joint treatment has set and dried, and any final sanding is complete, dust down the surface and apply Gyproc Drywall Primer to even out differences in surface texture and absorption between the board and jointed areas to create the ideal surface to receive final decoration.

Early application of Gyproc Drywall Primer helps to prevent plasterboards from yellowing. It is easily applied by brush or roller.

- Where water vapour control is a requirement, apply two coats of Gyproc Drywall Sealer to the plasterboard surface.

- Apply decoration with the minimum of delay after Gyproc Drywall Primer or Gyproc Drywall Sealer has dried.

NB If Gyproc Drywall Sealer is applied in a single coat, steam stripping at a later date becomes a simple operation.

! Gyproc Drywall Primer or Gyproc Drywall Sealer are not suitable for application to Glasroc MultiBoard or Glasroc FireCase s. Both these boards are suitable to receive direct decoration applied in accordance with the manufacturers' recommendations.

NB As with all wall and ceiling areas, gloss high sheen finishes will highlight variations of the surface, particularly with shallow angle lighting. The use of low sheen or matt finishes minimises this risk. Jointing should be carried out under similar lighting conditions to those used for subsequent inspection and use.

Heavy, semi-rigid or impermeable wallcoverings

• The use of these wallcoverings may involve specialist adhesives or techniques which may not be compatible with Gyproc Drywall Primer or Gyproc Drywall Sealer. Consult the wallcovering and/or adhesive manufacturer for a specific recommendation.

! Impermeable wallcoverings fixed with water-based adhesives should **not** be applied over Gyproc Drywall Sealer, as the drying of the adhesive will be severely restricted.