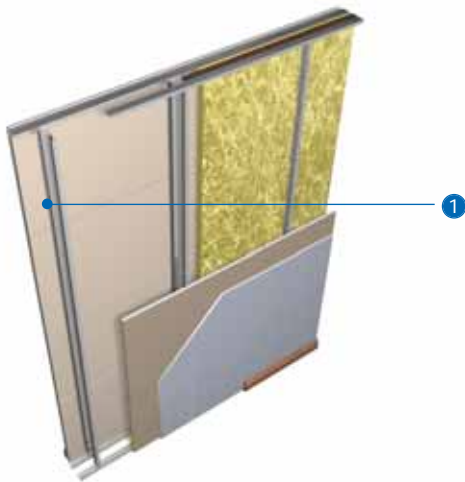


## Independent twin-frame acoustic separating wall system

GypWall QUIET IWL is a lightweight, non-loadbearing, steel 'I' stud twin-framed acoustic separating wall, that requires no bracing. As an approved Robust Detail construction (E-WS-2) it is primarily used as sound resisting walls in residential units such as flats and apartments, to exceed the requirements of national Building Regulations Part E. The system can also be specified in commercial and industrial buildings to meet a specific standard of sound performance.







1 Gypframe 'I' Stud.

### Key facts

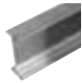
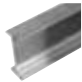
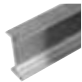
- An approved Robust Detail (RD) construction that can be used to meet Part E regulations for separating walls without Pre-Completion Testing
- Satisfies excess storey height requirements
- Accommodates services between the twin-stud frameworks
- Satisfies *BS 5234* strength and robustness requirements up to Severe Duty

## Components

### Gyproc board products

|   |                                     |            | Take-off quantities <sup>1</sup>         |
|---|-------------------------------------|------------|--|
|  | <b>Gyproc FireLine<sup>2</sup></b>  |            | 200m <sup>2</sup> per layer if specified |
|   | Thickness                           | 12.5, 15mm |  |
|   | Width                               | 1200mm     |  |
|  | <b>Gyproc SoundBloc<sup>2</sup></b> |            | 200m <sup>2</sup> per layer              |
|   | Thickness                           | 15mm       |  |
|   | Width                               | 1200mm     |  |

### Gypframe metal products

|   |                                  |              |      |
|---|----------------------------------|--------------|------|
|  | <b>Gypframe 60 I 70 'I' Stud</b> |              | 335m |
|   | Length                           | 3600, 4200mm |      |
|  | <b>Gypframe 70 I 70 'I' Stud</b> |              | 335m |
|   | Length                           | 3600, 4200mm |      |
|  | <b>Gypframe 92 I 90 'I' Stud</b> |              | 335m |
|   | Length                           | 5000, 6000mm |      |

<sup>1</sup> Quantities for 100m<sup>2</sup> of straight partition with a double layer of board each side. Quantities are approximate and for guidance only, no allowance has been made for waste, openings, abutments, etc.




### Gypframe metal products

|   |  |                           | Take-off quantities <sup>1</sup> |
|---|--|---------------------------|----------------------------------|
|  | <b>Gypframe Standard Floor &amp; Ceiling Channels</b>          |                           | Dependent on partition run       |
|   |  | 62 C 50, 72 C 50, 94 C 50 |                                  |
|   | <b>Gypframe Deep Flange Floor &amp; Ceiling Channels</b>       |                           |                                  |
|   |  | 62 DC 60, 72 DC 60        |                                  |
|   | <b>Gypframe Extra Deep Flange Floor &amp; Ceiling Channels</b> |                           |                                  |
|   | 72 EDC 80, 94 EDC 70   |                           |                                  |
|   | All channels are available in 3600mm only                      |                           |                                  |
|  | <b>Gypframe GFS1 Fixing Strap</b>                              |                           | as required                      |
|   | Length   | 2400mm                    |                                  |
|  | <b>Gypframe 99 FC 50 Fixing Channel</b>                        |                           | as required                      |
|   | Length   | 2400mm                    |                                  |

<sup>2</sup> Moisture resistant boards are specified in intermittent wet use areas e.g. shower cubicles

| Gypframe metal products   |   | Take-off quantities <sup>1</sup> |
|---|---|----------------------------------|
|  | <b>Gypframe 150 FC 90 Fixing Channel</b><br>Length 1194mm                 | as required                      |
|  | <b>Gypframe 60 S 50 'C' Stud</b><br>Length 3000, 3600mm                   | as required                      |
|  | <b>Gypframe 70 S 50 'C' Stud</b><br>Length 2400, 2700, 3000, 3600, 4200mm | as required                      |
|  | <b>Gypframe 92 S 50 'C' Stud</b><br>Length 3600, 4200mm                   | as required                      |
|  | <b>Gypframe GA5 Internal Fixing Angle</b><br>Length 2400, 3600mm          | as required                      |

| Fixing and finishing products   |  | Take-off quantities <sup>1</sup>                             |
|---|--|--|
|  | <b>Gyproc Jack-Point Screws</b><br>For fixing boards to stud framing 0.8mm thick or greater and 'I' studs greater than 0.55mm thick. | 1 <sup>st</sup> layer - 1750<br>2 <sup>nd</sup> layer - 2250 |
|  | <b>Gyproc Sealant</b><br>For sealing airpaths for optimum sound insulation.  | 1 cartridge per 35m based on a 6 - 10mm bead                 |
|  | <b>Gyproc jointing materials</b><br>For seamless jointing.   | as required  |
|  | <b>Gyproc edge beads</b><br>Protecting and enhancing board edges.  | as required  |

| Fixing and finishing products  | Take-off quantities <sup>†</sup> | Fixing and finishing products   | Take-off quantities <sup>†</sup> |
|--|----------------------------------|---|----------------------------------|
|  <p><b>Gyproc Control Joint</b><br/>To accommodate structural movement.</p>                       | as required                      |  <p><b>Isover APR 1200</b><br/>For enhanced acoustic performance.<br/>100mm.</p> | 100m <sup>2</sup>                |
|  <p><b>Gyproc FireStrip</b><br/>For fire-stopping deflection heads.</p>                           | as required                      |   |                                  |
|  <p><b>Thistle Multi-Finish or Thistle Board Finish</b><br/>To provide a plaster skim finish.</p> | 10m <sup>2</sup> per 25kg bag    |   |                                  |
|  <p><b>Thistle Durafinish</b><br/>To provide improved resistance to accidental damage.</p>        | 10m <sup>2</sup> per 25kg bag    |   |                                  |
|  <p><b>Thistle Spray Finish</b><br/>Gypsum finish plaster for spray or hand application.</p>      | 11m <sup>2</sup> per 25kg bag    |   |                                  |

<sup>†</sup> Quantities for 100m<sup>2</sup> of straight partition with a double layer of board each side. Quantities are approximate and for guidance only, no allowance has been made for waste, openings, abutments, etc.

## Construction tips

- The following points should be considered in addition to the construction tips for **GypWall CLASSIC**
- The estimated construction time is 1 - 1.5m<sup>2</sup> / man hour ready for finishing
- For Robust Detail constructions specific flanking details apply - refer to the Robust Detail Handbook
- Robust Details Ltd Technical Support - 0870 240 8209

## Installation



- Gyprame Floor & Ceiling Channel is fixed to the floor and soffit.
- 62mm or 72mm head and floor channels must be securely fixed with a line of fixings at 600mm maximum centres, 94mm with two lines of staggered fixings at 600mm maximum centres. If the floor is uneven a 38mm thick timber sole plate equal to the width of the channel should be used. If the concrete or screeded floor is new, consideration should be given to the installation of a damp-proof membrane between the floor surface and the channel or sole plate.



- Gyproframe 'I' Studs are fitted vertically to a friction-fit within the channel sections, and Gyproframe 'C' Studs to abutments, to form the first framework. Where studs are used at heights greater than 4m, consider locking into the floor channels using Gyproc Crimping Tool, or Gyproc Wafer Head Drywall Screws.



- The second framework is installed as the first, with stud frameworks spaced to achieve the specified wall thickness. Do not brace the two frames.



- Apply Gyproc Sealant to both sides of frame perimeter to provide optimum acoustic performance.

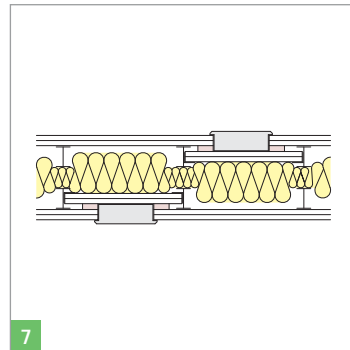


- Boards are screw-fixed to all framing members at 300mm centres to form the lining. Under layer boards do not require centre fixings. Cut and fix the initial second layer board as appropriate so that subsequent board joints are staggered.
- Reduce centres to 200mm at external angles.



### Services

- Install services (by appropriate trades), normally after one side is boarded. Pass horizontal runs through cut-outs in the studs.
- Install Gypframe 99 FC 50 Fixing Channel or Gypframe Floor & Ceiling Channel between studs to provide support for recessed switch boxes.



- Fix Gypframe GA4 Steel Angle to web of metal studs with two Gyproc Wafer Head Screws. The face layer of pattress to be equal in specification to face layer of partition boarding. The second layer of board forming pattress to be equal in specification to face layer of partition board or, alternatively, an equal thickness of ply if preferred. The boards are screw-fixed to the Gypframe GA4 Steel Angle with Gyproc Drywall Screws.





8

- Alternatively Hilti CP617 Putty Pads can be used, contact Hilti for full details, tel: 0800 886100
- All performance substantiation has to be provided by the fire-stopping manufacturer as is the case for any fire-stopping material.



9

### Fixtures

- Additional framing is installed as required to support fixtures. For light to medium fixtures Gypframe 99 FC 50 Fixing Channel can be used. Install Gypframe 150 FC 90 Fixing Channels to accommodate heavyweight fixtures. If a plywood pattress is required, Gypframe Service Support Plates should be used.

- Install Isover insulation (as required) progressively as boarding proceeds.
- Isover insulation can be hung within the partition by trapping at the partition head using Gypframe Steel Angle.

