

# Gyptone QUATTRO 55

## Product Data Sheet

### Introduction

Gyptone QUATTRO 55 is a perforated gypsum acoustic ceiling plank used in conjunction with the **CasoLine quick lock** Corridor system. Once installed, the system can be rapidly disassembled to provide full and unrestricted access to the ceiling cavity.

### Product description

Gyptone QUATTRO 55 comprises a 12.5mm gypsum core with a geometric array of 12mm square perforations. The planks are available in lengths of 1800mm, 2100mm or 2400mm with an acoustic fleece on the reverse side. Long edges are tegular E15, and short edges are A edge. As with all products in the Gyptone range, Gyptone QUATTRO 55 is supplied with **ACTIVair** technology as standard, which absorbs and converts formaldehyde into non-harmful inert compounds.

### Board Performance

#### Sound absorption

Gyptone planks provide sound absorption when used in conjunction with an air space behind the ceiling. Tests have been carried out to *BS EN 20354: 1993* and *ISO 354: 1985*.

Increased levels of sound absorption can be achieved by including a layer of Isover insulation over the back of the ceiling. The single figure rating practical sound absorption coefficients  $\alpha_w$ , and sound absorption classes, are calculated in accordance with *BS EN ISO 11654: 1997*. The Noise Reduction Coefficient (NRC) is calculated in accordance with *ASTM C423-90a: 1992*.

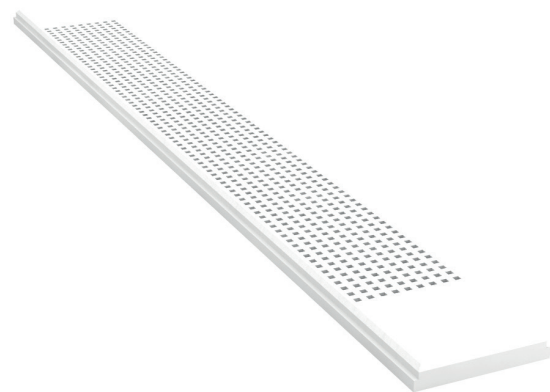
#### ACTIVair technology

Though we don't notice them, impurities such as VOCs are often present in the air we breathe - emitted from furniture, carpets and building materials. Long-term exposure to these can potentially cause health problems and reduce general well-being. Clean air, on the other hand, can speed up patient recovery in hospitals, reduce absence at work, and increase pupils' concentration at school. **ACTIVair** is our latest technology designed specifically to convert formaldehyde, a common VOC, into non-harmful inert compounds, removing up to 70% of the formaldehyde concentration in the indoor air. This clever technology continues to work over 50 years, and whilst alternative solutions absorb formaldehyde, they don't decompose like **ACTIVair** risking re-emission at a later date.

*Formaldehyde reduction is based on experimental data following ISO16000-23 standards from 0.4m<sup>2</sup> to 1.4m<sup>2</sup> installed/ m<sup>3</sup> room. Lifetime is based on a calculation assuming constant formaldehyde reduction with indoor formaldehyde concentration of 25µg/m<sup>3</sup> for ceiling, drywall or combined drywall and ceiling configurations.*

#### Declaration of Performance

Declaration of Performance is available for download from [british-gypsum.com](http://british-gypsum.com)



#### Physical properties

Dimensions	1800mm x 300mm 2400mm x 300mm
Thickness	12.5mm
Perforation size	12x12mm square
Perforation spacing	25mm cc
Perforated area	15%
Edge type	A, E15
Colour	White NCS 500
Reaction to fire	A2-s1, d0
Weight (approx)	8 kg/m <sup>2</sup>
Moisture resistance	Up to 70% RH

#### Sound Absorption Performance

System Reference	Plenum (mm)	Isover Acoustic Partition Roll (APR 1200) (mm)	Practical absorption coefficient $\alpha_p$								Class	NRC
			125	250	500	1000	2000	4000	$\alpha_w$			
C10A092	50	–	0.2	0.35	0.65	0.8	0.65	0.55	0.65	C	0.6	
C10A098	50	50	0.4	0.75	0.85	0.75	0.65	0.65	0.75	C	0.75	
C10A034	187	–	0.5	0.7	0.8	0.7	0.6	0.55	0.65	C	0.7	

---

## Application and installation

### Handling and storage

Gyptone planks should be stored flat on a level surface and protected from dampness. To avoid damage to the special acoustic tissue bonded to the back face, Gyptone planks should not be pulled over the edges of the stack of boards below.

### Jointing and finishing

Gyptone planks can be cut to length on site using a standard blade. When cutting to length, ensure the perforated part of the plank remains centred by cutting equal-sized sections from both ends of the plank. Cutting through the perforations of Gyptone QUATTRO 55 does not affect the structural integrity of the plank, but may affect the aesthetics of the finished ceiling. Refer to the British Gypsum Ceilings Installation Guide for further details.

### Fixtures

Gyptone planks must not be subjected to additional load. Lights and similar fixtures must be separately hung from wires or fixed to independent loadbearing structures.

### Environment

Gyptone planks are unsuitable for use in areas subject to continuously damp or humid conditions above 70% RH, or in elevated temperatures consistently above 49°C. Where higher levels of moisture resistance are required, refer to the British Gypsum Eurocooustic range of ceiling tiles.

### Recyclability

The gypsum core of Gyptone tiles is 100% recyclable. **CasoLine** quick lock grid and components are also 100% recyclable.

Date of previous version: first edition.

---

## Product standards

All British Gypsum ceiling products are manufactured under management systems which have been independently audited and certified as conforming with *ISO 9001: 2001*. All Gyptone products conform to *EN 14190: 2014* Gypsum plasterboard from reprocessing - requirements and test methods.

---

## Maintenance

Gyptone tiles can be repainted if required, using a short haired roller and suitable matt emulsion paint. The paint should not be applied with a spray diffuser as this will impair the acoustic performance.

---

## Warranty

Gyptone QUATTRO 55 is covered by British Gypsum's SpecSure® lifetime system warranty. SpecSure® confirms British Gypsum systems will perform to the parameters published in our current literature for the period of time that the system is used for its originally designed purpose. Systems must be specified and installed in line with the current British Gypsum White Book, and comprise only genuine branded British Gypsum components.

---

"Gyproc", "Thistle", "Gypframe" and "Glasroc" are all registered trademarks of Saint-Gobain Construction Products UK Limited. "Isover" is a registered trademark of Saint-Gobain Isover and "Artex" is a registered trademark of Saint-Gobain Construction Products UK Limited.

Saint-Gobain Construction Products UK Limited is a limited company registered in England under company number 734396, having its registered office at Saint-Gobain House, Binley Business Park, Coventry, CV3 2TT, UK. Saint-Gobain Construction Products UK Limited trades as British Gypsum for part of its business activities.

British Gypsum reserves the right to revise product specification without notice. The information herein should not be read in isolation as it is meant only as guidance for the user, who should always ensure that they are fully conversant with the products and systems being used and their subsequent installation prior to the commencement of work. For a comprehensive and up-to-date library of information visit the British Gypsum website at: [british-gypsum.com](http://british-gypsum.com). For information about products supplied by Artex Limited or Saint-Gobain Isover please see their respective websites.

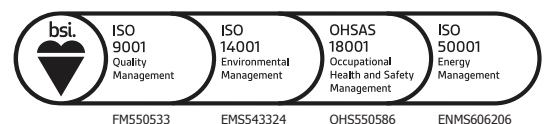
\*British Gypsum" is a registered trademark of Saint-Gobain Construction Products UK Limited.

Telephone: **0115 945 6123**

Fax: **0115 945 1616**

Email: [bgtechnical.enquiries@bpb.com](mailto:bgtechnical.enquiries@bpb.com)

Training enquiries: **0844 561 8810**



© British Gypsum December 2016 PDS-416-01

[british-gypsum.com](http://british-gypsum.com)

