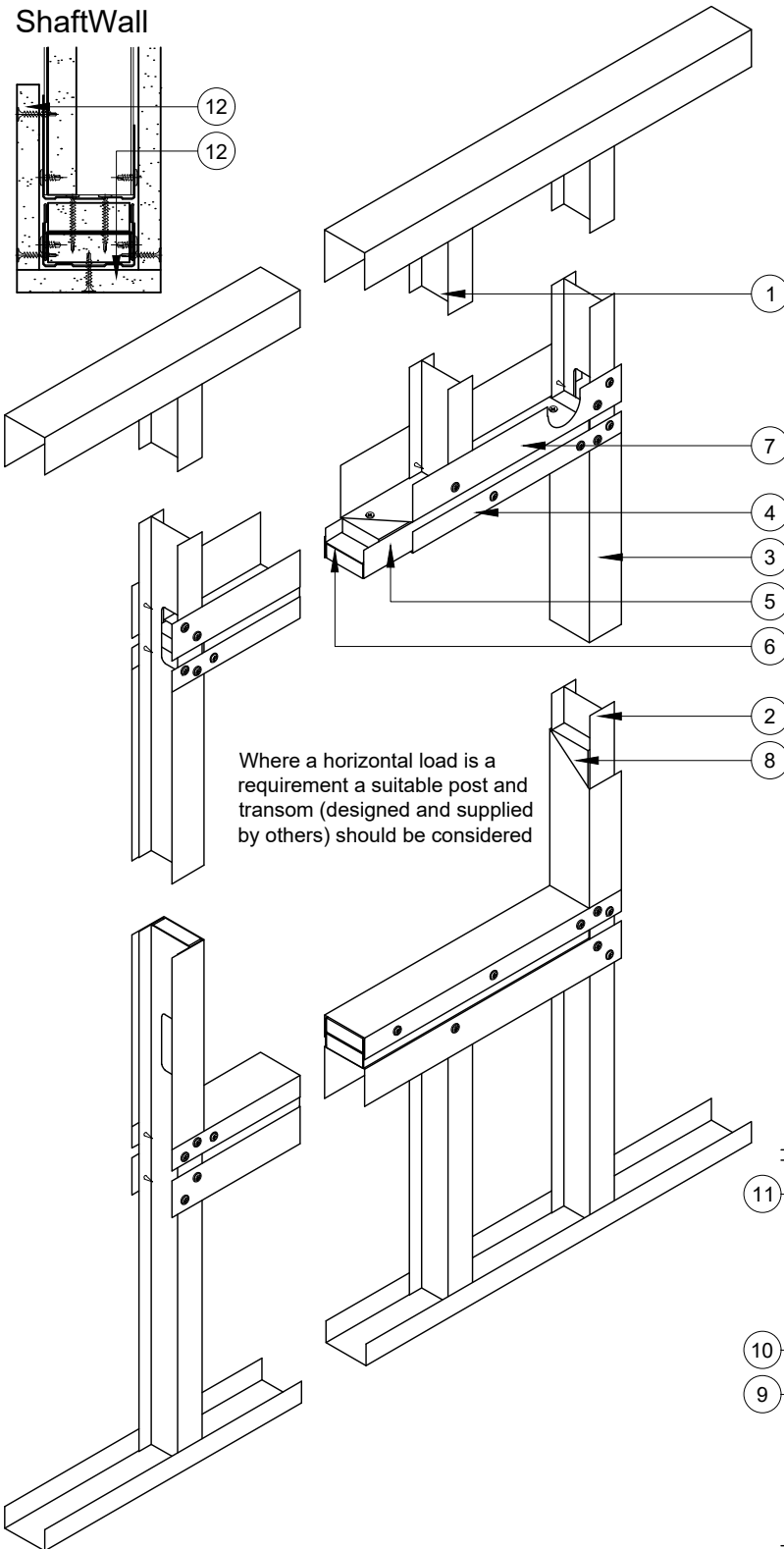
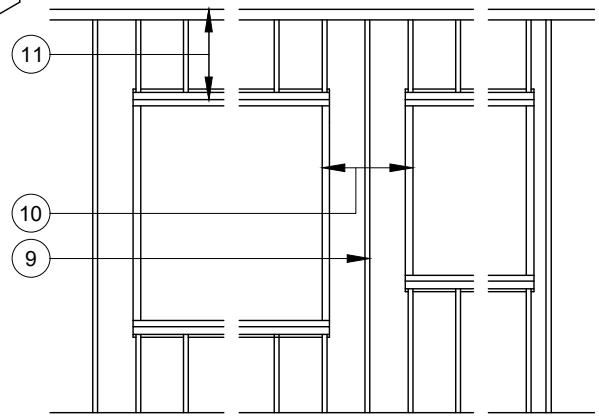


This drawing is provided to customers free of charge and the details shown are subject to the accuracy of the information provided to British Gypsum at the time the drawing was originally requested. No duty of care is owed to the recipient or any other third party and British Gypsum cannot accept liability in respect of the details shown. The drawing should therefore be approved by the project design and management authority before use to ensure that it meets with their specific project requirements. It should also be read in conjunction with British Gypsum's current literature available at www.british-gypsum.com. Taping and finishing in accordance with British Gypsum's current recommendations is assumed (with the exception of FireCase system). Please note the drawing may show British Gypsum products fixed by or to products that are non-British Gypsum products/fixings please refer to Specifying Authority for specification details. This drawing is valid at the time of issue, please check with British Gypsum for the latest version.

ShaftWall



- 1 Gyprframe 'I' studs at specified centres fixed to transom/cill channel through both flanges with suitable British Gypsum wafer head screws
- 2 Gyprframe Deep Channel sleeved over stud between returned channels at opening head & base
- 3 Gyprframe 'I' stud at jamb
- 4 Gyprframe Channel with web cut around jamb stud & fixed through both flanges with 2 no. suitable British Gypsum wafer head screws
- 5 Gyprframe 'I' stud inserted into channel & fixed through both flanges with suitable British Gypsum wafer head screws at 150mm centres
- 6 19mm Gyproc CoreBoard or 20mm Glasroc F FireCase packer inserted both sides of 'I' stud to full opening width & extended into jamb stud web
- 7 Gyprframe 'J' Channel with web cut around jamb stud & fixed through both flanges with 2 no. suitable British Gypsum wafer head screws. Also fixed through web to horizontal 'I' stud with suitable British Gypsum screws at 300mm centres in 2 lines staggered by 150mm
- 8 19mm Gyproc CoreBoard or 20mm Glasroc F FireCase packer to full opening height
- 9 Centre stud required for margin up to 600mm
- 10 Minimum 300mm margin between openings
- 11 Partition above opening with deflection head:
 - Maximum 4800mm for 1 layer board
 - Maximum 2400mm for 2 layers board
 - For greater heights suitable structural sections sized & supplied by others required around opening
- 12 Board returned at transom/cill of opening & over back flange of channel & fixed with suitable British Gypsum screws



Opening Width 1201mm to 2000mm

Partition with 1 or 2 Layers Plasterboard
60mm Stud

Partition Elevation



Technical Support Team
Tel: 0115 945 6123
british-gypsum.com

Title:

Openings

ShaftWall

Typical Details Read with Project Specification

Scale at A4: Date:

1:10 1:50 Jan 20

Drawn:

MRC

Approved:

MBH

Dwg No.:

TY-782-ZZZZ-09

Rev.: