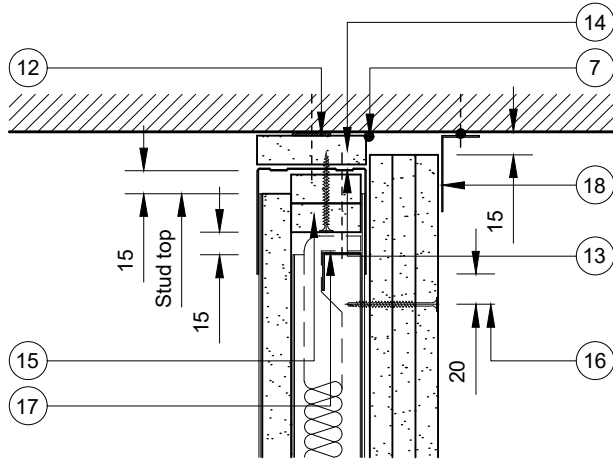


This drawing is provided to customers free of charge and the details shown are subject to the accuracy of the information provided to British Gypsum at the time the drawing was originally requested. No duty of care is owed to the recipient or any other third party and British Gypsum cannot accept liability in respect of the details shown. The drawing should therefore be approved by the project design and management authority before use to ensure that it meets with their specific project requirements. It should also be read in conjunction with British Gypsum's current literature available at www.british-gypsum.com. Taping and finishing in accordance with British Gypsum's current recommendations is assumed (with the exception of FireCase system). Please note the drawing may show British Gypsum products fixed by or to products that are non-British Gypsum products/fixings please refer to Specifying Authority for specification details. This drawing is valid at the time of issue, please check with British Gypsum for the latest version.

ShaftWall

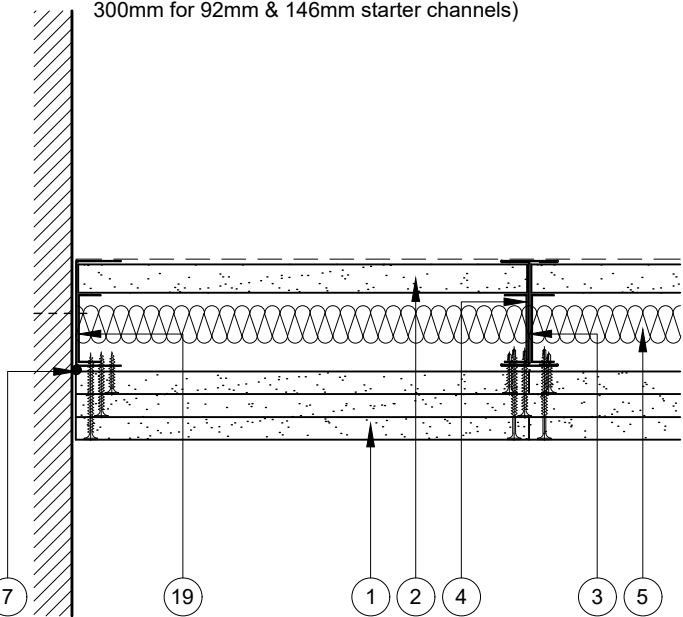
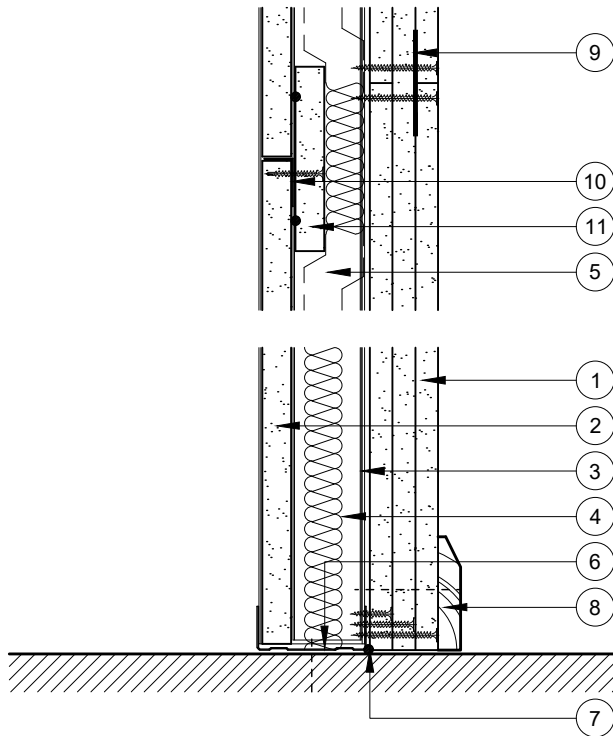
- 1 3 layers Gyproc plasterboard or Glasroc specialist board fixed with suitable British Gypsum screws at 300mm centres (200mm centres at external angles)
- 2 19mm Gyproc CoreBoard or 20mm Glasroc F FireCase
- 3 Gyproframe 'I' studs (146mm tabbed 'I' studs) at specified centres
- 4 Gyproframe Retaining Channel
- 5 Isover insulation where required



- 6 Gyproframe Channel suitably fixed to floor at 600mm centres (in 2 lines staggered by 300mm for 94mm & 148mm channels). Gyproframe Deep Channel used for heights between 4200mm & 8000mm.
- 7 Gyproc Sealant for optimum sound insulation
- 8 Indicative skirting
- 9 Gyproframe GFS1 Fixing Strap to support outer layer horizontal board joints
- 10 Gyproframe GA3 Steel Angle at horizontal joint & secured by retaining channel at each end
- 11 122mm high strip of 19mm Gyproc CoreBoard or 20mm Glasroc F FireCase bedded on 2 continuous beads of Gyproc Sealant & fixed to angle with 3 no. suitable British Gypsum screws
- 12 Gyproc FireStrip
- 13 Gyproframe Extra Deep Channel (62mm 'J' Channel) suitably fixed through fire stop to soffit at 300mm centres (at 600mm centres in 2 lines staggered by 300mm for 94mm & 148mm channels)
- 14 Channel width strip of 19mm Gyproc CoreBoard or 20mm Glasroc F FireCase
- 15 2 no. 36/46/68/122mm width (to suit 60/70/92/146mm studs) fire stops cut from 19mm Gyproc CoreBoard or 20mm Glasroc F FireCase, installed between studs & fixed to channel with 2 no. suitable British Gypsum screws
- 16 Uppermost board fixing to studs
- 17 Gyproframe Steel Angle or timber batten suitably fixed to channel where required
- 18 Gyproframe GA4 Steel Angle bedded on continuous bead of Gyproc Sealant & suitably fixed to soffit at 600mm centres (for optimum sound insulation if required by specifier or acoustic consultant)
- 19 Gyproframe Starter Channel (146mm Tabbed Starter Channel) suitably fixed to wall at 600mm centres (in 2 lines staggered by 300mm for 92mm & 146mm starter channels)

Deflection Head

15mm Downward Movement



Base & Horizontal Board Joint

Wall Abutment



Technical Support Team
Tel: 0115 945 6123
british-gypsum.com

Title:

ShaftWall

'I' Studs and 3 Layers Board

Typical Details Read with Project Specification

Scale at A4: Date:

1:5

Jan 20

Drawn:

MRC

Approved:

DRM

Dwg No.:

TY-712-Z2L3-01

Rev.: