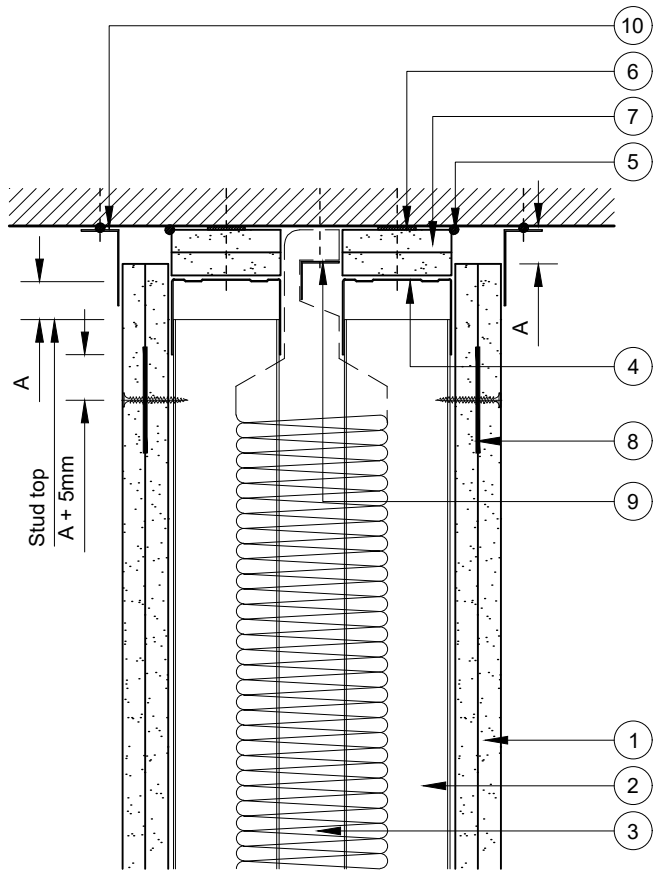


This drawing is provided to customers free of charge and the details shown are subject to the accuracy of the information provided to British Gypsum at the time the drawing was originally requested. No duty of care is owed to the recipient or any other third party and British Gypsum cannot accept liability in respect of the details shown. The drawing should therefore be approved by the project design and management authority before use to ensure that it meets with their specific project requirements. It should also be read in conjunction with British Gypsum's current literature available at [www.british-gypsum.com](http://www.british-gypsum.com). Taping and finishing in accordance with British Gypsum's current recommendations is assumed (with the exception of FireCase system). Please note the drawing may show British Gypsum products fixed by or to products that are non-British Gypsum products/fixings please refer to Specifying Authority for specification details. This drawing is valid at the time of issue, please check with British Gypsum for the latest version.

## GypWall Quiet IWL

- 1 2 layers Gyproc plasterboard or Glasroc specialist board fixed with suitable British Gypsum screws at 300mm centres (200mm centres at external angles)
- 2 2 lines of Gypframe 'I' studs at specified centres
- 3 Isover insulation where required
- 4 Gypframe Deep Channel or Extra Deep Channel (see table) suitably fixed through fire stop to soffit at 600mm centres (in 2 lines staggered by 300mm for 94mm & 148mm channels)
- 5 Gyproc Sealant for optimum sound insulation
- 6 Gyproc FireStrip
- 7 1 no. channel width strip of board or 2 no. channel width strips of board pre-fixed to channel with suitable British Gypsum screws at 600mm centres (see table)
- 8 Gypframe GFS1 Fixing Strap to receive uppermost board fixings (no fixings into head channel)
- 9 Gypframe Steel Angle or timber batten suitably fixed to channel where required
- 10 Gypframe GA4 Steel Angle bedded on continuous bead of Gyproc Sealant & suitably fixed to soffit at 600mm centres. Minimum 60 x 25mm steel angle (by others) required for deflection greater than 40mm. For optimum sound insulation if required by specifier or acoustic consultant.



Deflection Head Design

Dim. A	Channel ④	Fire Stop ⑦
15mm	DC	1 no. 19mm Gyproc CoreBoard
20mm		2 no. 15mm Glasroc F FireCase
25mm		2 no. 20mm Glasroc F FireCase
30mm	EDC	2 no. 20mm Glasroc F FireCase
35mm		2 no. 25mm Glasroc F FireCase
40mm		2 no. 25mm Glasroc F FireCase
45mm		2 no. 30mm Glasroc F FireCase
50mm		2 no. 30mm Glasroc F FireCase

### ⚠ Important Information

Fire resistance BS 476: Part 22: 1987

- 30 or 60 minutes through partition subject to specification

## Deflection Head

Downward Movement



Technical Support Team  
Tel: 0115 945 6123  
[british-gypsum.com](http://british-gypsum.com)

Title:

GypWall Quiet IWL

'I' Studs and 2 Layers Board

Typical Details Read with Project Specification

Scale at A4: Date: Drawn: Approved: Dwg No.: Rev.:

1:5 Jan 20 MRC DRM TY-707-Z2L2-05