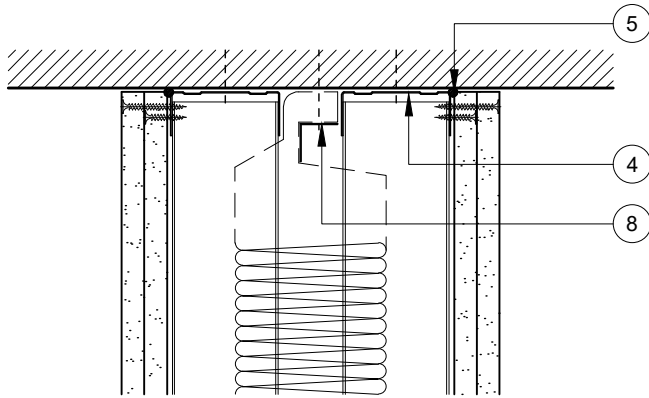


This drawing is provided to customers free of charge and the details shown are subject to the accuracy of the information provided to British Gypsum at the time the drawing was originally requested. No duty of care is owed to the recipient or any other third party and British Gypsum cannot accept liability in respect of the details shown. The drawing should therefore be approved by the project design and management authority before use to ensure that it meets with their specific project requirements. It should also be read in conjunction with British Gypsum's current literature available at [www.british-gypsum.com](http://www.british-gypsum.com). Taping and finishing in accordance with British Gypsum's current recommendations is assumed (with the exception of FireCase system). Please note the drawing may show British Gypsum products fixed by or to products that are non-British Gypsum products/fixings please refer to Specifying Authority for specification details. This drawing is valid at the time of issue, please check with British Gypsum for the latest version.

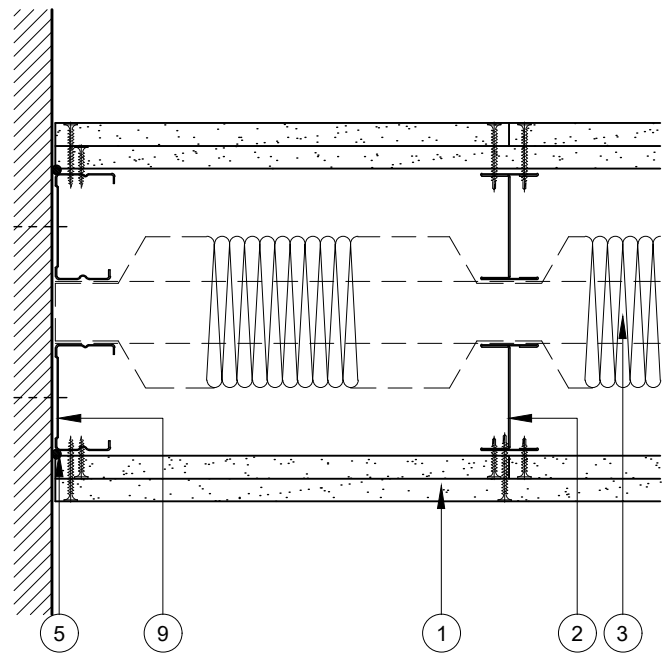
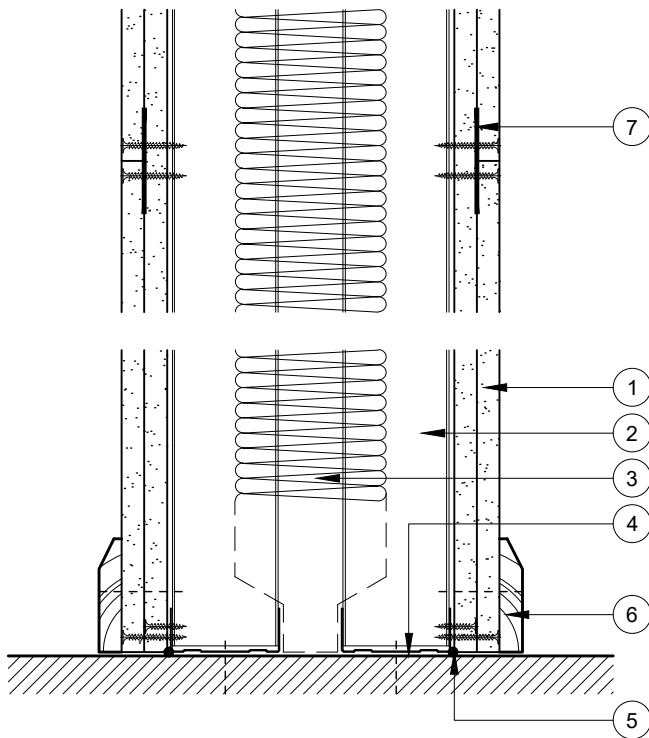
## GypWall Quiet IWL

- 1 2 layers Gyproc plasterboard or Glasroc specialist board fixed with suitable British Gypsum screws at 300mm centres (200mm centres at external angles)
- 2 2 lines of Gyproframe 'I' studs at specified centres
- 3 Isover insulation where required
- 4 Gyproframe Channel suitably fixed to floor/soffit at 600mm centres (in 2 lines staggered by 300mm for 94mm & 148mm channels). Deep Channel for heights between 4200mm & 8000mm or Extra Deep Channel for heights over 8000mm
- 5 Gyproc Sealant for optimum sound insulation
- 6 Indicative skirting
- 7 Gyproframe GFS1 Fixing Strap to support outer layer horizontal board joints
- 8 Gyproframe Steel Angle or timber batten suitably fixed to soffit where required
- 9 Gyproframe 'C' stud suitably fixed to wall at 600mm centres (in 2 lines staggered by 300mm for 92mm & 146mm studs)



## Head

No Deflection Allowance



## Base & Horizontal Board Joint

## Wall Abutment



Technical Support Team  
Tel: 0115 945 6123  
[british-gypsum.com](http://british-gypsum.com)

Title:

## GypWall Quiet IWL

'I' Studs and 2 Layers Board

Typical Details Read with Project Specification

Scale at A4:	Date:	Drawn:	Approved:	Dwg No.:	Rev.:
1:5	Jan 20	MRC	DRM	TY-707-Z2L2-01	