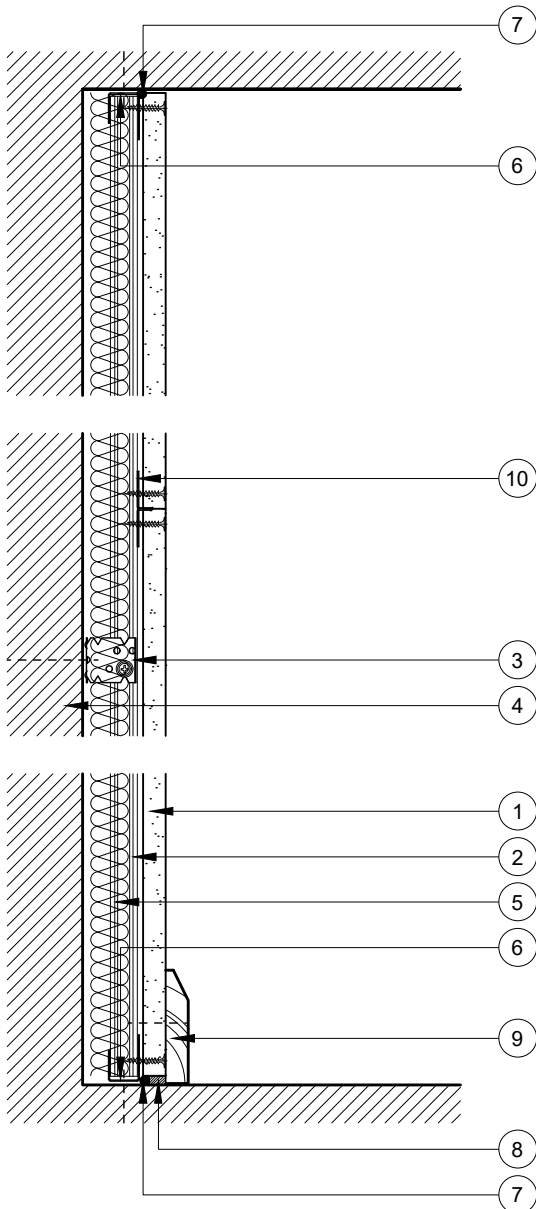


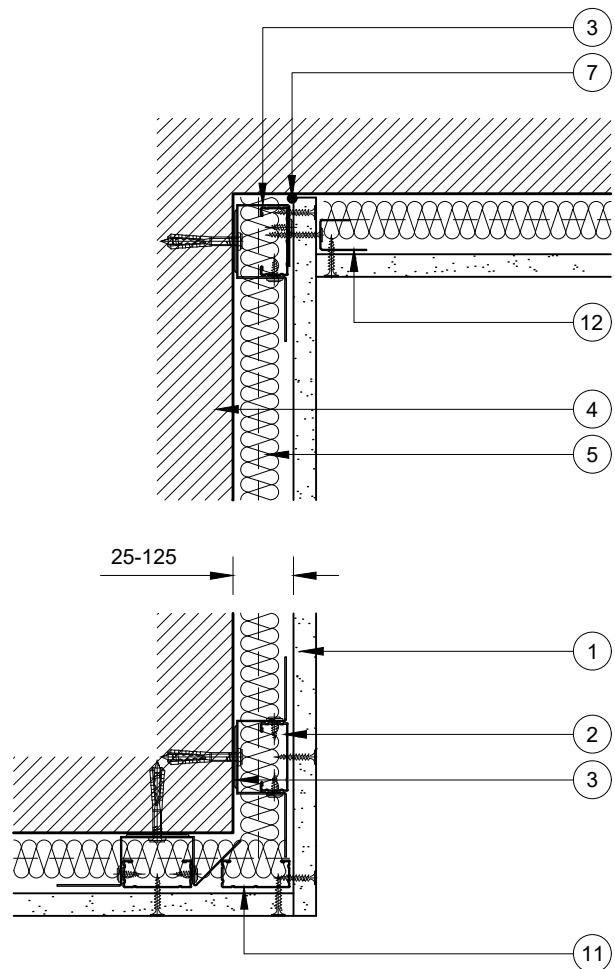
This drawing is provided to customers free of charge and the details shown are subject to the accuracy of the information provided to British Gypsum at the time the drawing was originally requested. No duty of care is owed to the recipient or any other third party and British Gypsum cannot accept liability in respect of the details shown. The drawing should therefore be approved by the project design and management authority before use to ensure that it meets with their specific project requirements. It should also be read in conjunction with British Gypsum's current literature available at [www.british-gypsum.com](http://www.british-gypsum.com). Taping and finishing in accordance with British Gypsum's current recommendations is assumed (with the exception of FireCase system). Please note the drawing may show British Gypsum products fixed by or to products that are non-British Gypsum products/fixings please refer to Specifying Authority for specification details. This drawing is valid at the time of issue, please check with British Gypsum for the latest version.

## GypLyner Universal

- 1 1 layer Gyproc plasterboard or Glasroc specialist board fixed with suitable British Gypsum screws at 300mm centres (200mm centres at external angles)
- 2 Gypframe GL1 Lining Channels close to corners & at 600mm centres thereafter. Lining channels extended with Gypframe GL3 Channel Connectors (not shown)
- 3 Gypframe GL2 or GL9 Brackets at 800mm centres fixed to background with Gypframe GL11 GypLyner Anchors. Legs fixed to lining channel with suitable British Gypsum wafer head screws & bent back from lining channel face. For internal corners leg bent across lining channel face & fixed with suitable British Gypsum wafer head screws
- 4 Indicative masonry background
- 5 Isover insulation where required
- 6 Gypframe GL8 Track suitably fixed to floor/soffit at 600mm centres
- 7 Gyproc Sealant for optimum sound insulation
- 8 Gyproc jointing material bulk fill where gap exceeds 5mm
- 9 Indicative skirting
- 10 Gypframe GFT1 Fixing T progressively inserted between board edge & lining channels to support horizontal board joints. Alternatively Gypframe GFS1 Fixing Strap (not shown) fixed to lining channels with 2 no. suitable British Gypsum wafer head screws
- 11 Additional Gypframe GL1 Lining Channel fixed to track at head & base with suitable British Gypsum wafer head screws
- 12 Gypframe GL8 Track fixed through board to lining channel with suitable British Gypsum screws at 600mm centres



Base & Head



External & Internal Corners



Technical Support Team  
Tel: 0115 945 6123  
[british-gypsum.com](http://british-gypsum.com)

Title:  
**GypLyner Universal**  
1 Layer Board  
Typical Details Read with Project Specification

Scale at A4:	Date:	Drawn:	Approved:	Dwg No.:	Rev.:
1:5	Jan 20	MRC	NCL	TY-742-BRL1-01	