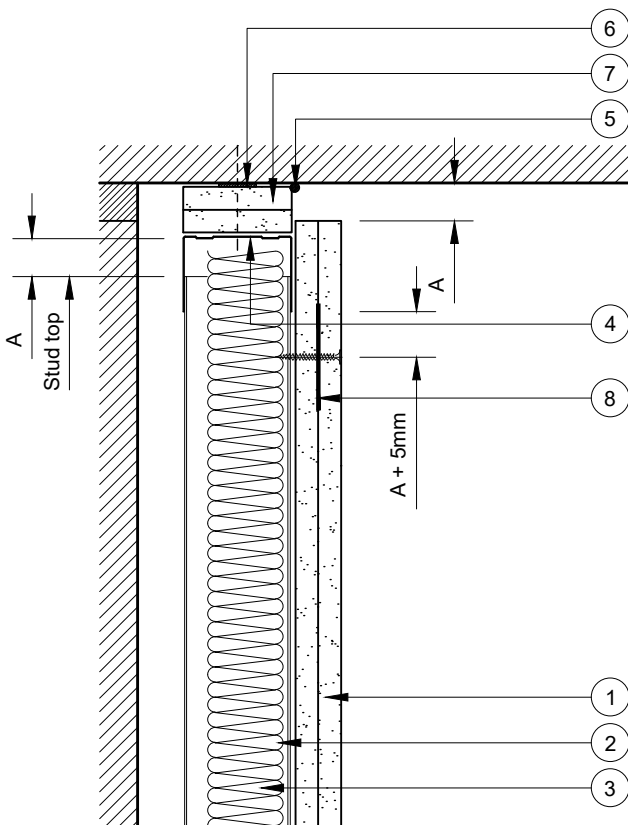


This drawing is provided to customers free of charge and the details shown are subject to the accuracy of the information provided to British Gypsum at the time the drawing was originally requested. No duty of care is owed to the recipient or any other third party and British Gypsum cannot accept liability in respect of the details shown. The drawing should therefore be approved by the project design and management authority before use to ensure that it meets with their specific project requirements. It should also be read in conjunction with British Gypsum's current literature available at [www.british-gypsum.com](http://www.british-gypsum.com). Taping and finishing in accordance with British Gypsum's current recommendations is assumed (with the exception of FireCase system). Please note the drawing may show British Gypsum products fixed by or to products that are non-British Gypsum products/fixings please refer to Specifying Authority for specification details. This drawing is valid at the time of issue, please check with British Gypsum for the latest version.

## GypLyner IWL

- 1 2 layers Gyproc plasterboard or Glasroc specialist board fixed with suitable British Gypsum screws at 300mm centres (200mm centres at external angles)
- 2 Gyproframe 'I' studs at specified centres
- 3 Isover insulation where required
- 4 Gyproframe Deep Channel or Extra Deep Channel (see table) suitably fixed through fire stop to soffit at 600mm centres (in 2 line staggered by 300mm for 94mm & 148mm channels)
- 5 Gyproc Sealant for optimum sound insulation
- 6 Gyproc FireStrip for fire rated applications (see important information)
- 7 1 no. channel width strip of board or 2 no. channel width strips of board pre-fixed to channel with suitable British Gypsum screws at 600mm centres (see table)
- 8 Gyproframe GFS1 Fixing Strap to receive uppermost board fixings (no fixings into head channel)



Deflection Head Design

Dim. A	Channel ④	Fire Stop ⑦
15mm	DC	1 no. 19mm Gyproc CoreBoard
20mm		2 no. 15mm Glasroc F FireCase
25mm		2 no. 20mm Glasroc F FireCase
30mm	EDC	2 no. 25mm Glasroc F FireCase
35mm		2 no. 30mm Glasroc F FireCase
40mm		
45mm		
50mm		

### ⓘ Important Information

Non-fire rated

An estimated fire performance could be claimed subject to GypLyner IWL specification. Refer to British Gypsum Technical Support Team for guidance

## Deflection Head

Downward Movement



Technical Support Team  
Tel: 0115 945 6123  
[british-gypsum.com](http://british-gypsum.com)

Title:

GypLyner IWL

'I' Studs and 2 Layers Board

Typical Details Read with Project Specification

Scale at A4: Date: Drawn: Approved: Dwg No.: Rev.:

1:5 Jan 20 MRC NCL TY-743-Z2L2-04