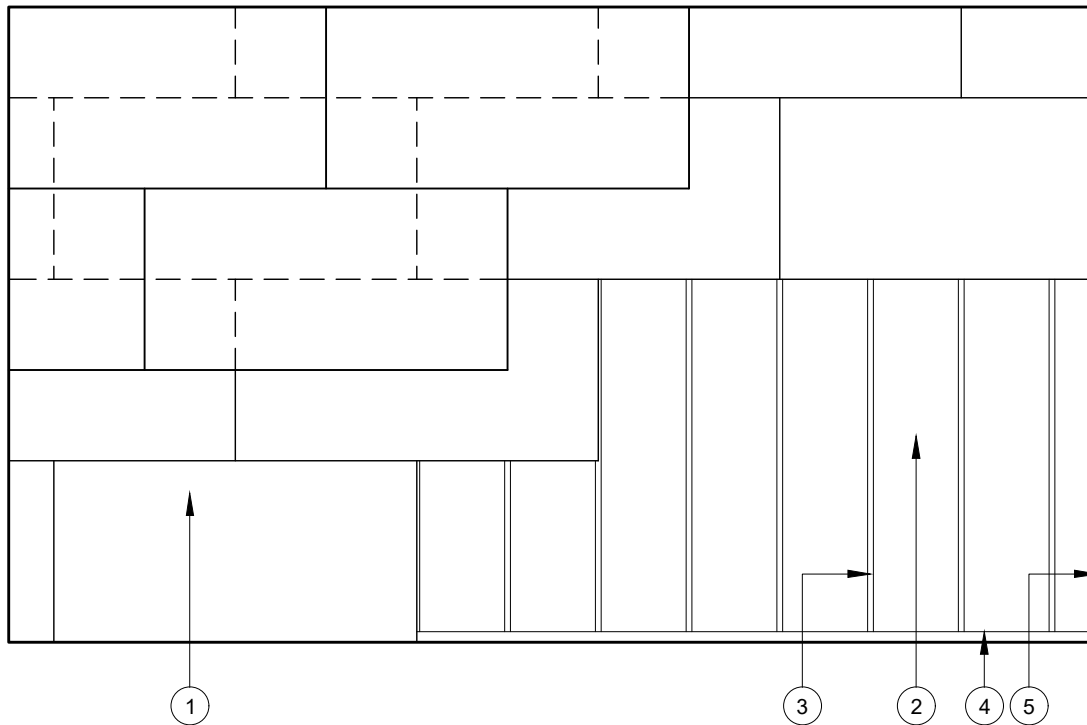


This drawing is provided to customers free of charge and the details shown are subject to the accuracy of the information provided to British Gypsum at the time the drawing was originally requested. No duty of care is owed to the recipient or any other third party and British Gypsum cannot accept liability in respect of the details shown. The drawing should therefore be approved by the project design and management authority before use to ensure that it meets with their specific project requirements. It should also be read in conjunction with British Gypsum's current literature available at www.british-gypsum.com. Taping and finishing in accordance with British Gypsum's current recommendations is assumed (with the exception of FireCase system). Please note the drawing may show British Gypsum products fixed by or to products that are non-British Gypsum products/fixings please refer to Specifying Authority for specification details. This drawing is valid at the time of issue, please check with British Gypsum for the latest version.

ShaftWall Horizontal

- 1 2 layers Gyproc plasterboard fixed with suitable British Gypsum screws at 230mm centres in field of board & 150mm centres at board ends
- 2 19mm Gyproc CoreBoard secured with Gyframe G102 Retaining Channel
- 3 Gyframe 146 TI 90 tabbed 'I' studs at 600mm centres fixed into channel through bottom flange with 2 no. suitable British Gypsum wafer head screws
- 4 Gyframe 148 EDC 80 Extra Deep Channel suitably fixed to wall at 600mm centres in 2 lines staggered by 300mm
- 5 Gyframe 146 TSC 90 Tabbed Starter Channel suitably fixed to wall at 600mm centres in 2 lines staggered by 300mm

ShaftWall used horizontally should not be used for material storage or access for personnel



Upper Frame Reflected Ceiling Plan



Technical Support Team
Tel: 0115 945 6123
british-gypsum.com

Title:

ShaftWall Horizontal

146mm 'I' Studs in 2 Frames and 2+2 Layers Board
Typical Details Read with Project Specification

Scale at A4:	Date:	Drawn:	Approved:	Dwg No.:	Rev.:
1:50	Jan 20	MRC	MBH	TY-756-52L4-02	