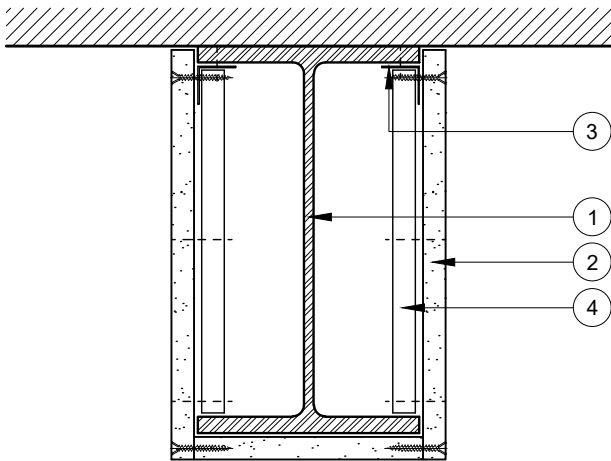


This drawing is provided to customers free of charge and the details shown are subject to the accuracy of the information provided to British Gypsum at the time the drawing was originally requested. No duty of care is owed to the recipient or any other third party and British Gypsum cannot accept liability in respect of the details shown. The drawing should therefore be approved by the project design and management authority before use to ensure that it meets with their specific project requirements. It should also be read in conjunction with British Gypsum's current literature available at [www.british-gypsum.com](http://www.british-gypsum.com). Taping and finishing in accordance with British Gypsum's current recommendations is assumed (with the exception of FireCase system). Please note the drawing may show British Gypsum products fixed by or to products that are non-British Gypsum products/fixings please refer to Specifying Authority for specification details. This drawing is valid at the time of issue, please check with British Gypsum for the latest version.

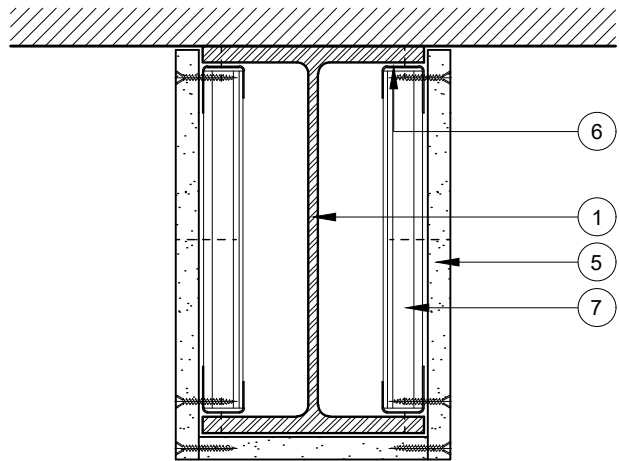
## FireCase

- 1 Indicative steel column or beam
- 2 1 layer Glasroc F FireCase fixed together & to steel angles with Glasroc F FireCase Screws at 150mm centres. Board joints staggered by minimum 600mm between adjacent sides
- 3 Gypframe FEA1 Steel Angle suitably fixed to column/beam flange at 600mm centres
- 4 60mm wide Glasroc F FireCase backing strip at board joints
- 5 1 layer Glasroc F FireCase fixed together & to MF5 & MF6 framework with Glasroc F FireCase Screws at 150mm centres. Board joints staggered by minimum 600mm between adjacent sides
- 6 Gypframe MF6 Perimeter Channel suitably fixed to beam flange at 600mm centres
- 7 Gypframe MF5 Ceiling Section at board joints



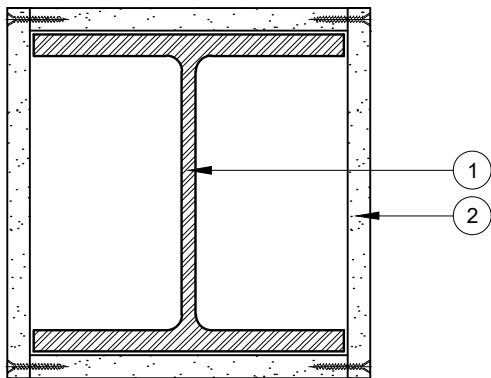
### 3 Sided Beam Encasement

Maximum 600mm Beam Height



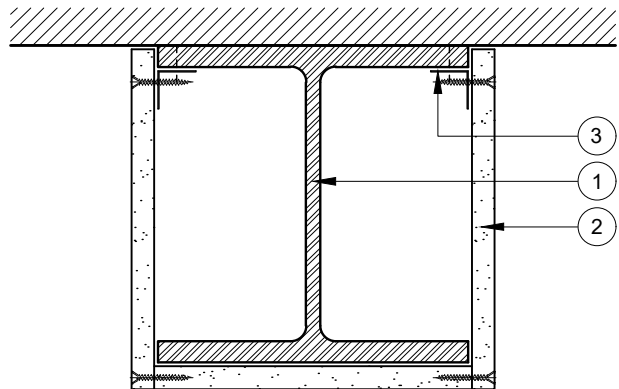
### 3 Sided Beam Encasement

600mm to 1200mm Beam Height with Metal Frame



### 4 Sided Column Encasement

Maximum 600mm Column Width



### 3 Sided Column Encasement

Maximum 600mm Column Width



Technical Support Team  
Tel: 0115 945 6123  
[british-gypsum.com](http://british-gypsum.com)

Title:

## FireCase

Steel Angles and 1 Layer Board

Typical Details Read with Project Specification

Scale at A4:

1:5

Date:

Jan 20

Drawn:

MRC

Approved:

MBH

Dwg No.:

TY-771-ANL1-01

Rev.: