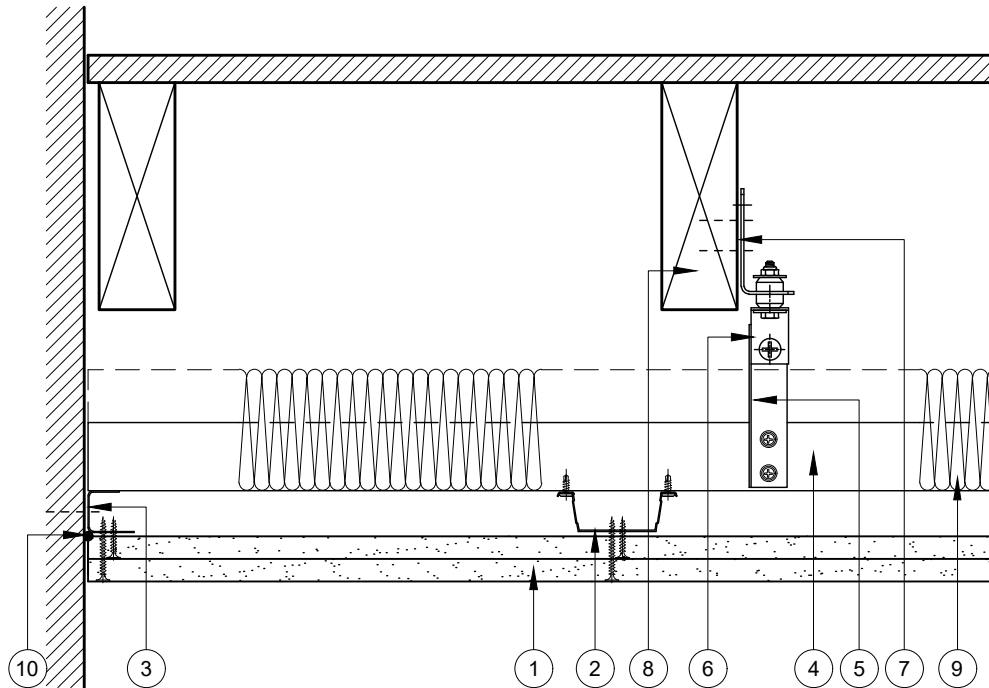


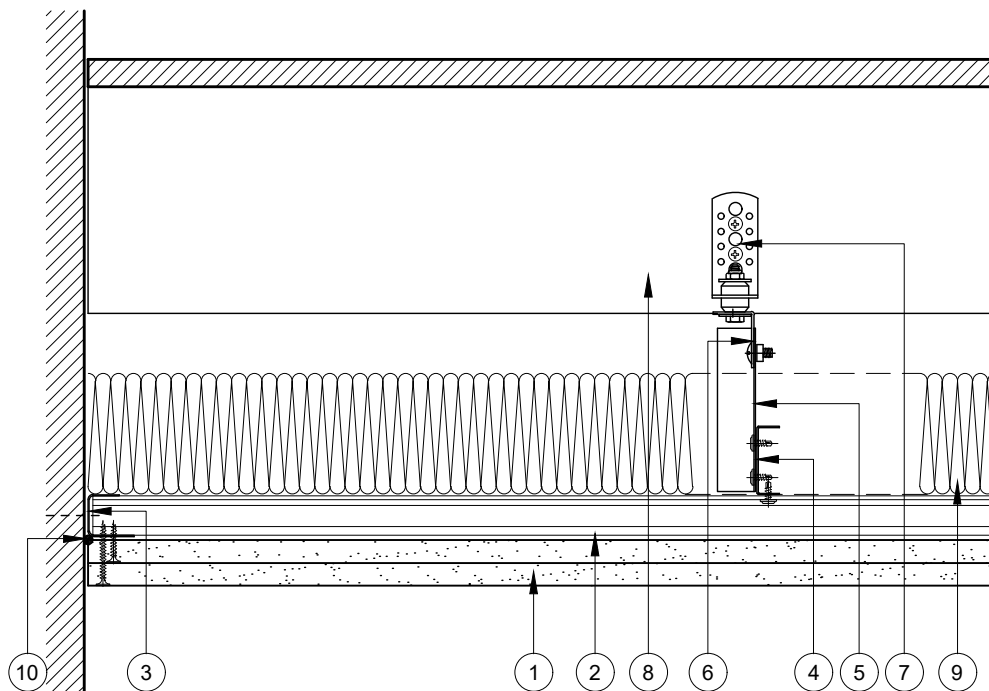
This drawing is provided to customers free of charge and the details shown are subject to the accuracy of the information provided to British Gypsum at the time the drawing was originally requested. No duty of care is owed to the recipient or any other third party and British Gypsum cannot accept liability in respect of the details shown. The drawing should therefore be approved by the project design and management authority before use to ensure that it meets with their specific project requirements. It should also be read in conjunction with British Gypsum's current literature available at [www.british-gypsum.com](http://www.british-gypsum.com). Taping and finishing in accordance with British Gypsum's current recommendations is assumed (with the exception of FireCase system). Please note the drawing may show British Gypsum products fixed by or to products that are non-British Gypsum products/fixings please refer to Specifying Authority for specification details. This drawing is valid at the time of issue, please check with British Gypsum for the latest version.

## CasoLine MF



- 1 2 layers Gyproc plasterboard or Glasroc specialist board fixed with suitable British Gypsum screws at 230mm centres in field of board & 150mm centres at board ends
- 2 Gypframe MF5 Ceiling Sections at max. 450mm centres fixed to each MF7 with 2 no. suitable British Gypsum wafer head screws or MF9 Connecting Clip
- 3 Gypframe MF6 Perimeter Channel suitably fixed to wall at 600mm centres
- 4 Gypframe MF7 Primary Support Channels at specified centres
- 5 Gypframe MF8 Strap Hanger or FEA1 Steel Angle hangers at specified centres fixed to MF7 with 2 no. suitable British Gypsum wafer head screws
- 6 Gypframe MF12 Soffit Cleat fixed to hanger with MF11 Nut & Bolt & fixed to acoustic hanger with M6 bolt (nom. 40mm length) & locking nut by others
- 7 Gypframe GAH2 Acoustic Hanger fixed to joists with 2 no. suitable British Gypsum screws
- 8 Timber joist floor with wood board flooring
- 9 Isover insulation or stone mineral wool where required
- 10 Gyproc Sealant for optimum sound insulation

### Perimeter 1



### Perimeter 2



Technical Support Team  
Tel: 0115 945 6123  
[british-gypsum.com](http://british-gypsum.com)

Title:

### CasoLine MF

Timber Joist Floor with Acoustic Hangers and 2 Layers Board  
Typical Details Read with Project Specification

Scale at A4:	Date:	Drawn:	Approved:	Dwg No.:	Rev.:
1:5	Jan 20	MRC	MBH	TY-751-AHL2-02	