

## Faster - more plots completed each week

**Gyproc AquaBead**  
22 apartments

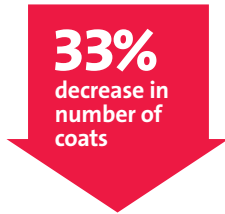
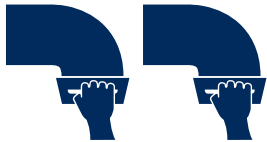


**Corner tape**  
16 apartments



## Easier - less work for a better result\*

**Gyproc AquaBead** 2 coats to finish



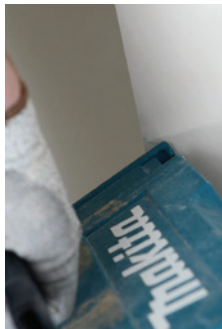
**Corner tape** 3 coats to finish



\*In live site trials the results shown were achieved when comparing Gyproc AquaBead to standard Corner tape. Trials took place during February 2016.

## Stronger - means fewer call backs\*

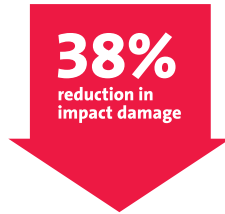
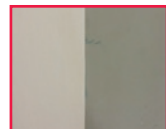
**Toolbox damage**



**Corner tape**  
After damage



**Gyproc AquaBead**  
After damage



\*Tested in an independent laboratory

"Gyproc", "Thistle", "Gypframe" and "Glasroc" are all registered trademarks of Saint-Gobain Construction Products UK Limited. "Isover" is a registered trademark of Saint-Gobain Isover and "Artex" is a registered trademark of Saint-Gobain Construction Products UK Limited.

Saint-Gobain Construction Products UK Limited is a limited company registered in England under company number 734396, having its registered office at Saint-Gobain House, Binley Business Park, Coventry, CV3 2TT, UK. Saint-Gobain Construction Products UK Limited trades as British Gypsum for part of its business activities.

British Gypsum reserves the right to revise product specification without notice. The information herein should not be read in isolation as it is meant only as guidance for the user, who should always ensure that they are fully conversant with the products and systems being used and their subsequent installation prior to the commencement of work. For a comprehensive and up-to-date library of information visit the British Gypsum website at: british-gypsum.com. For information about products supplied by Artex Limited or Saint-Gobain Isover please see their respective websites.

"British Gypsum" is a registered trademark of Saint-Gobain Construction Products UK Limited.



**Technical enquiries**  
British Gypsum  
Technical Advice Centre  
East Leake  
Loughborough  
Leicestershire  
LE12 6HX

Telephone: 0115 945 6123  
Fax: 0115 945 1616  
Email: [bgtechnical.enquiries@bpb.com](mailto:bgtechnical.enquiries@bpb.com)

British Gypsum August 2016 BG-GAB-01

[british-gypsum.com](http://british-gypsum.com)



# Gyproc AquaBead

Water-activated adhesive bead for tough corners, installed fast

SAINT-GOBAIN

**British Gypsum**  
SAINT-GOBAIN

# Gyproc AquaBead

Faster, stronger, easier

Gyproc AquaBead corner bead is a revolutionary new corner bead that is easier to cut and apply than any other corner beads and tapes, and it is only available from British Gypsum.

Gyproc AquaBead has a water-activated adhesive which provides a superior bond directly to plasterboard, and the perforations allow the cement to adhere to the plasterboard surface



Just spray the Gyproc AquaBead with water to activate the adhesive and apply to the corner. It's that easy to get a fast and durable perfect 90 degree corner with no mess.

Gyproc AquaBead's right angled profile makes it easy to get straight and crisp lines without the hassle and mess of using cement or fillers, screws, staples and tapes.

The paper-plastic-paper design withstands impacts to prevent dents and cracks, making Gyproc AquaBead corners tough and durable.

## Gyproc AquaBead is easy to install – spray, stick, done!



Using a spray bottle or pump sprayer, apply water liberally to the adhesive side of Gyproc AquaBead with clean, ordinary tap water. The warmer the water, the faster the activation.

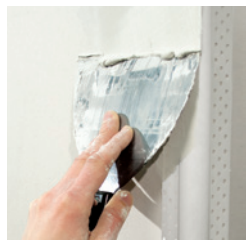


After applying water, allow 15 - 60 seconds for the adhesive to become sticky.

Place the wet, adhesive side of Gyproc AquaBead on the wall corner, aligning it tightly to the ceiling.



Press firmly by hand or with a roller, ensuring good contact between the flanges and the plasterboard.



The Gyproc AquaBead corner can be filled after 30 minutes using Gyproc Joint Filler or Gyproc Joint Cement.

## Benefits

- ✓ Increased productivity
- ✓ Reduced application time
- ✓ Simple and safe handling
- ✓ Light weight
- ✓ Requires less drying time
- ✓ No bedding with filler or cement
- ✓ Straight to second coat
- ✓ Flexible and durable
- ✓ Reduced call backs and snagging



Available lengths	Package size	Packaging
2.5m, 2.7m and 3.0m	50 pcs	Water-repellent box*

\*Store in a dry place



High impact resistance



Easy to Cut



Apply in seconds



Simply spray and stick