

GypCeiling Grid

Identification

Create ceilings that look great with our demountable lay-in grid system.

GypCeiling Grid is a lightweight, exposed grid demountable ceiling system with either a 15mm or 24mm flange. It's compatible with a range of square edge Gyprex tiles.

The system allows easy access to the ceiling cavity; simply remove tiles by hand.



Why specify GypCeiling Grid?

Offers Gyprex Satinspar or Gyprex Bio to suit your interior

Comes with our **SpecSure®** lifetime warranty when you use the full system including our CasoLine Quick-Lock Grid Components

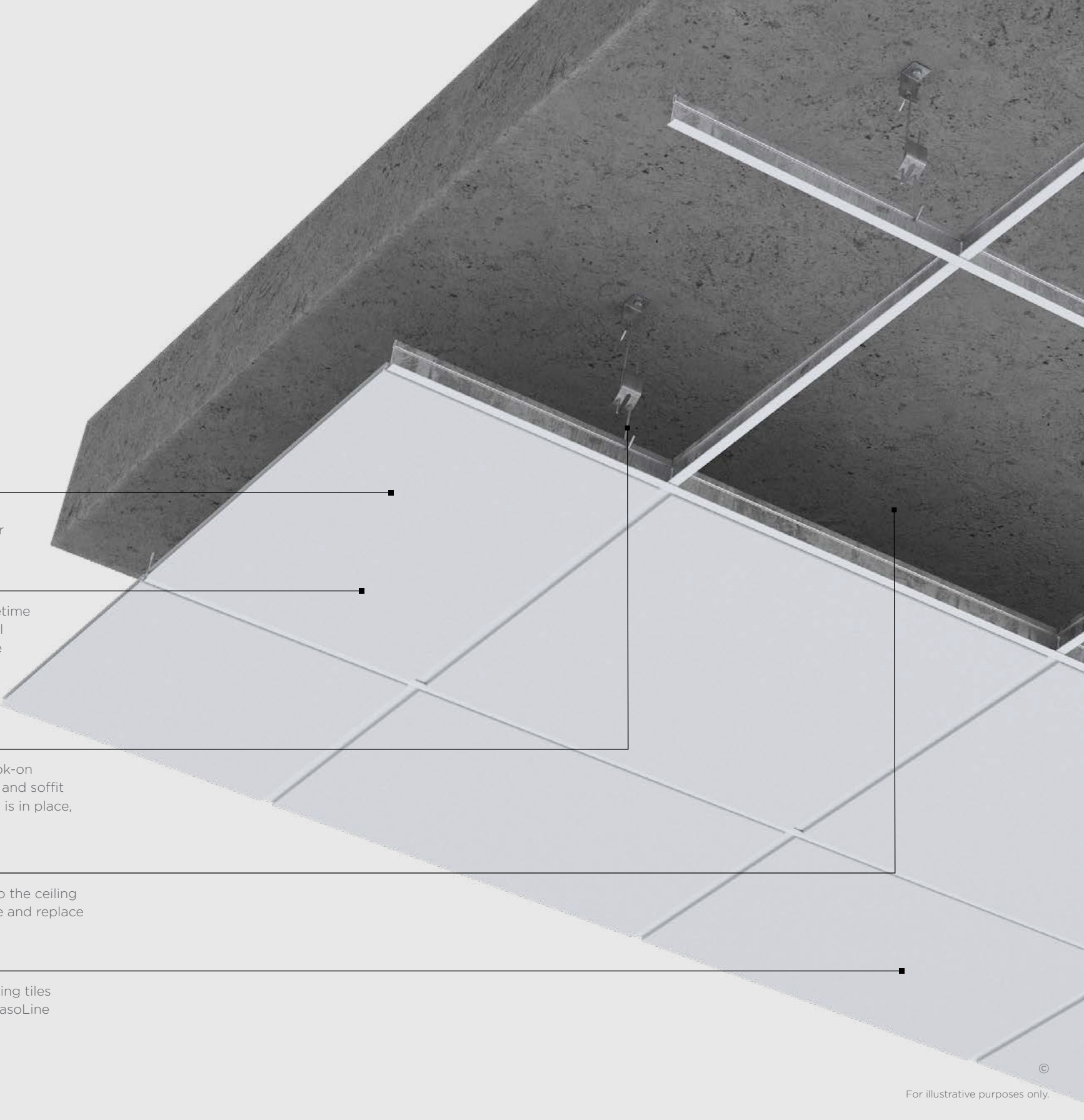
Easy to install, with simple hook-on connections between the grid and soffit cleat; as soon as one cross tee is in place, the grid is stabilised

Gives you hassle-free access to the ceiling cavity; simply remove, relocate and replace tiles whenever you need to

Accommodates all Gyprex ceiling tiles within the robust and stable CasoLine Quick-Lock Grid system



There are specifications within this system that qualify for our **SpecSure®** warranty. For more information see british-gypsum.com/specsure



For illustrative purposes only.

© British Gypsum, 2024.

GypCeiling Grid

Design considerations

GypCeiling Grid comprises a steel coloured metal frame grid system of 15mm and 24mm wide CasoLine Quick-Lock Grid Main Tees, Cross Tees and Wall Angles. Gyprex tiles are then installed.

Planning – key factors

Set out ceilings from the centre of the room to give balanced widths of tiles at perimeters. Two grid layouts are possible, depending on the ceiling tile. Refer to construction details 1 on page 9.39 for configuration option. Refer also to BS EN 13964: 2014, Suspended Ceilings. Requirements and test methods.

Relative humidity (RH)

The grid is suitable for use in heated occupied buildings in conditions up to 90% relative humidity (RH90). Gyprex tiles are suitable up to RH90.

Cavity barriers

Form cavity barriers, if required, with Gyproc FireLine or Glasroc F MultiBoard screw-fixed to a suitable frame. Fix the framing to the structure to avoid undue loading of the ceiling suspension grid. Fix the bottom of the framework to the ceiling grid.

Fire stopping

You must provide suitable fire stopping at the junction of a cavity barrier with the structural perimeter and the ceiling. Fire stopping materials must also be installed around service penetrations through the cavity barrier.

Water vapour control

Gyprex tiles have a water vapour resistance factor of 600µ. Whilst the vinyl surface provides an effective vapour control layer, it may be necessary to maintain integrity where boards abut metal grid sections. You can achieve this by sealing with continuous beads of water vapour resistant sealant, applied to the back of the metal sections, before inserting the tiles. Ensure that the sealant does not damage the vinyl surface of the tiles.

Services

You can use the ceiling void above the suspension grid to route all service requirements including ducting, pipework, electrical cables, and conduits. Ducting, ventilation units, etc, must be independently supported from the structure.

Maintenance

Clean ceiling tiles with a damp cloth or soft brush. Most standard mild detergents can be used.

Table 1: Light reflectance		
Ceiling product	Paint reference	Light reflectance
Gyprex Satinspar	-	88%
Gyprex Bio	-	84%

NB: Light reflectance test conducted in accordance with ASTM E1477-98.

Looking for performance selection tables?

We're committed to providing technical information that is transparent, clear, accurate, and always up-to-date. So you can rely on it when making decisions at any stage of the design, specification, installation, use, maintenance and disposal process.

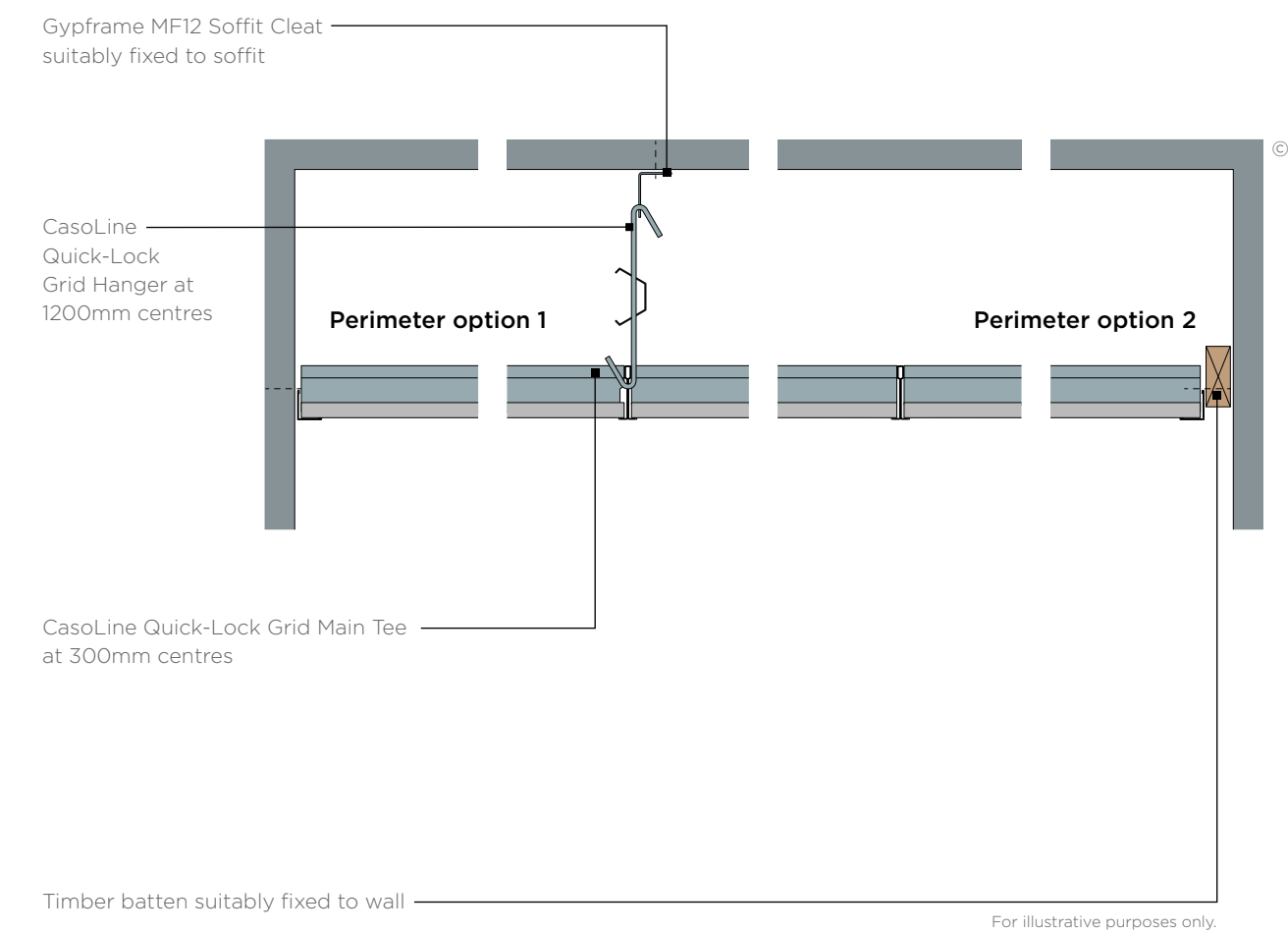
All performance data is now available to view and download on our website.

british-gypsum.com/gypceiling-grid

GypCeiling Grid

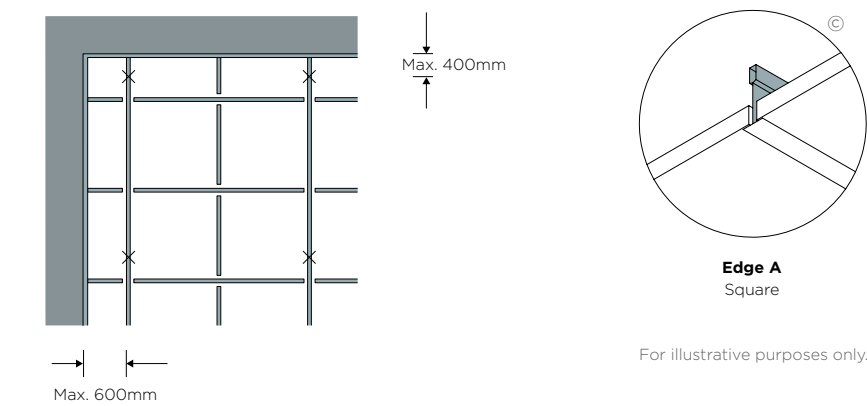
Construction details

1. Perimeter



2. Grid layout

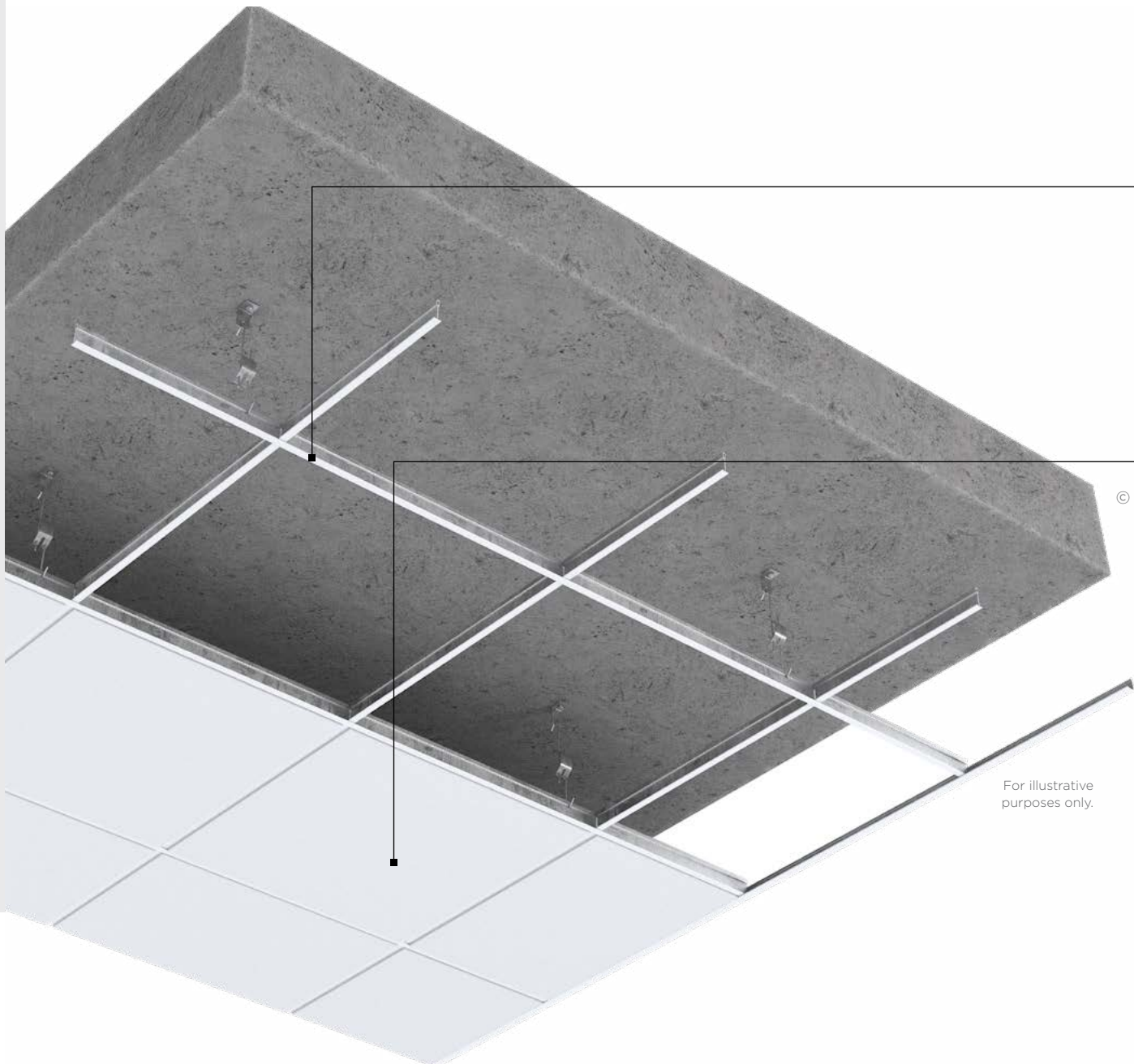
600mm x 600mm module



GypCeiling Grid

System components

GypCeiling Grid is compatible with our square-edge lay-in Gyprex tiles.



CasoLine Quick-Lock Grid Main Tee
15mm Main Tee profile used to span the room as the primary component within the GypCeiling Grid system.



CasoLine Quick-Lock Cross Tee
Gyptone Quick-Lock Cross-tees used with the T15 GypCeiling Grid system.



Gyprex Satinspar
Gyprex Satinspar is a vinyl-faced gypsum tile that's smooth and wipeable so that ceilings are easy to keep clean. Use it with the GypCeiling Grid to form a demountable suspended ceiling. Gyprex Satinspar is ideal for commercial ceiling installations that require a surface that's easy to clean. Its high light reflectance and smooth satin finish also make it suitable for creating light, bright interiors.

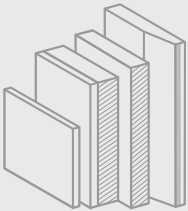


Gyprex Bio
Gyprex Bio is a vinyl-faced gypsum tile that's smooth and wipeable. It contains a biocide to slow fungi and bacteria growth.

Careful product choice is central to maintaining system integrity, performance requirements as well as eligibility for our **SpecSure®** warranty. **Ensure an optimum standard of build by considering...**

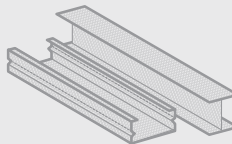
What are you fixing?

Our range of plain ceiling tiles offers black and white options. See british-gypsum.com for more details.



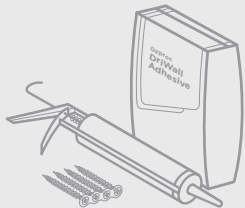
What are you fixing to?

Versatile metal framing and grid structures that provide strong and adaptable solutions for our ceiling systems. See british-gypsum.com for more details.



What are you fixing with?

Our fixings offer guaranteed compatibility with our systems, and are rigorously tested to meet the highest quality standards see british-gypsum.com for more details.



Where defined performance requirements are required see our White Book Specification Selector on british-gypsum.com



There are specifications within this system that qualify for our **SpecSure®** warranty. For more information see british-gypsum.com/specsure

© British Gypsum, 2024.

© British Gypsum, 2024.

GypCeiling Grid

Installation

The information below is intended to be a basic description of how the system is built.



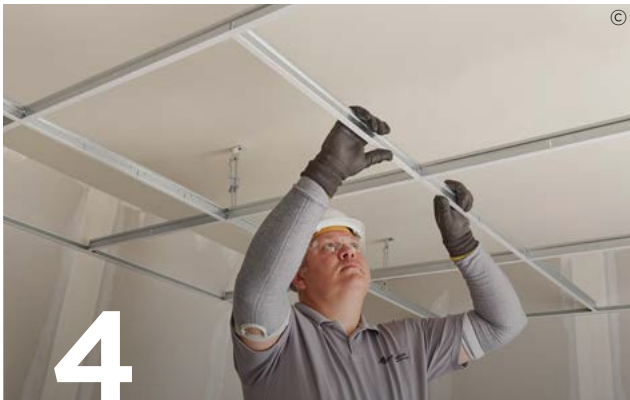
1 Measure and mark the required ceiling height. Fix the CasoLine Quick-Lock Grid Wall Angle WA02 or WA03 around the perimeter of the ceiling area.



2 Mark the ceiling at the required centres for the suspension points and fasten the Gypframe MF12 Soffit Cleats to the soffit.



3 Use CasoLine Quick-Lock Grid Hangers to suspend the CasoLine Quick-Lock Grid Main Tee 24/38 or 15/38 Main Tee.



4 Install 600mm and/or 1200mm CasoLine Quick-Lock Grid 24/38 Cross Tee or 15/38mm Cross Tee as required.



5 Lay the ceiling tiles into place.

Important point - CasoLine Quick-Lock Grid is a self-squaring system, with the main tees and cross tees now in place the ceiling tiles should be easily laid into place.

Important point - Ceiling tiles should be intermittently spaced around the CasoLine Quick-Lock Grid system to enable the frame to stay square.