

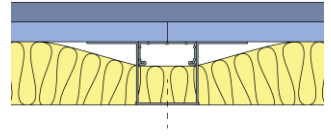
# Technical Specification

This document provides guidance on how to achieve performance and warranty requirements by exclusively using British Gypsum products or system specifications.

GypLyner Single

## GL-S-GL2-IL-SB15-OL-SBMR15-50APR

Gypframe GL1 Lining Channel framework fixed to one side of a structural background to give up to a maximum 75mm cavity with 50mm Isover Acoustic Partition Roll (APR 1200) in the cavity clad with an inner layer of Gyproc SoundBloc 15mm and an outer layer of Gyproc SoundBloc MR 15mm forming a lining where there is no requirement to satisfy any performance criteria.



## Background

Background	Suitable structural background.
------------	---------------------------------

## Head design

Head channel	<b>Gypframe GL8 Track</b>
--------------	---------------------------

Track suitably fixed to soffit at 600mm centres.

## Framework

Stud	<b>Gypframe GL1 Lining Channel</b>		
Stud centres - Max (mm)	600		
Channel connector	<b>Gypframe GL3 Channel Connector</b>		
Bracket type	<b>Gypframe GL2 Bracket</b>	Bracket centres - Max (mm)	800
Bracket fixing	<b>British Gypsum Wafer Head Drywall Screws 13mm</b>		
Fixing method	<b>Gypframe GL11 GypLyner Anchor</b>		

The brackets are fixed to the background with anchors for solid backgrounds or proprietary fixings for hollow backgrounds. Position lining channels at equal centres, maintaining sequence across openings, and locate in floor and ceiling track. Provide additional lining channels as necessary to ensure support to all vertical edges of boards. The legs of the bracket are fixed to the lining channel with wafer head screws then bent back from the lining channel face. For internal corners, legs are bent across the lining channel face and fixed using wafer head screws. Ensure end board joints do not coincide with lining channel joints.

Base channel	<b>Gypframe GL8 Track</b>
--------------	---------------------------

Track suitably fixed to floor at 600mm centres.

## Insulation

Insulation, Layer 1	<b>50mm Isover Acoustic Partition Roll (APR 1200)</b>
---------------------	---

## Board and fixings

Board side 1, Layer 1	<b>Gyproc SoundBloc 15mm</b>	Screws side 1, Layer 1	<b>British Gypsum Drywall Screws 25mm</b>
Board side 1, Layer 2	<b>Gyproc SoundBloc MR 15mm</b>	Screws side 1, Layer 2	<b>British Gypsum Drywall Screws 40mm</b>

Board layer 1 (inner), fix securely to Gypframe metal supports around the perimeter of the board at maximum 300mm centres; Board layer 2 (outer), fix securely to all Gypframe metal supports around the perimeter of the board and intermediate stud positions at maximum 300mm centres. External corners reduce fixings to 200mm. All joints staggered between layers. Fix working from the centre of each board. Position screws not less than 13mm from cut edges and 10mm from bound edges of boards. Set screw heads flush with plasterboard surface; do not break paper or gypsum core.

Fixing strap	<b>Gypframe GFS1 Fixing Strap</b>
--------------	-----------------------------------

Used to support horizontal board joints in face layer of multiple layer board linings and enable board screw fixing at 300mm centres.

Sealant	<b>Gyproc Sealant</b>
---------	-----------------------

Locate sealant at junctions with adjoining structure and other air paths. Apply as a continuous bead to clean, dry, dust-free surfaces, leaving no gaps. After application of sealant, bulk fill gaps between floor and underside of plasterboard using Gyproc jointing compound.

## Finish coat

Finishing is not required to achieve the specified performance, but the system can be finished using either one of our Thistle or ThistlePro plasters, or Gyproc jointing products. See the product range guides on the British Gypsum website for more information.

## System performance

Please read performance data with any associated standards.

Minimum cavity / offset (mm)	<b>25</b>	Maximum cavity / offset (mm)	<b>75</b>
------------------------------	-----------	------------------------------	-----------

## Technical Support Team | british-gypsum.com

This Technical Specification stipulates all British Gypsum products used within a system. These must be used to achieve the stated performance and the **SpecSure®** system warranty.

This document is provided to customers free and the information shown is subject to the accuracy of the information provided to us when the document was originally requested. The document should therefore be approved by the project design and management authority before use to ensure it meets their specific project requirements. It should also be read in conjunction with current literature available at british-gypsum.com. This document is valid at the time of issue, please check with British Gypsum for the latest version. No duty of care is owed to the recipient or any third party and British Gypsum excludes all liability in respect of the information shown to the fullest extent possible save where death or personal injury is caused due to British Gypsum's negligence or for fraud.