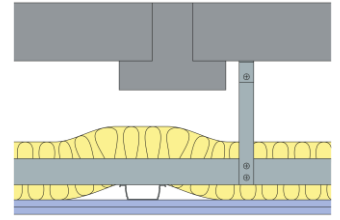


Technical Specification

This document provides guidance on how to achieve performance and warranty requirements by exclusively using British Gypsum products or system specifications.

GypCeiling MF C100019 (EN)

GypCeiling MF suspended ceiling fixed to 150mm thick lightweight concrete joist floor (90kg/m²) to give a 240mm cavity and lined with two layers of Gyproc SoundBloc 12.5mm with 100mm Isover Spacesaver Ready-Cut in the cavity.



Background

Structural background	150mm thick Beam & Block Floor (90kg/m ²)
-----------------------	---

Framework

Soffit connection	Gypframe MF12 Soffit Cleat		
Suspension type	Gypframe MF8 Strap Hanger	Suspension centres - Max (mm)	1200
Suspension type (alternative)	Gypframe FEA1 Steel Angle		
Strap hanger should be used for suspension up to 1000mm. Steel angle section can be used up to 5600mm.			
Suspension fixing	Gypframe MF11 Nut and Bolt British Gypsum Wafer Head Jack-Point Screws 13mm		

Lower end of suspension fixed to primary framework using two wafer head screws and upper end of suspension secured to soffit via soffit cleat / nut and bolt. If plenum depth greater than 2900mm use two angle sections overlapped by 200mm and fixed together using three British Gypsum Wafer Head Drywall Screws 13mm.

Primary framework	Gypframe MF7 Primary Support Channel	Primary framework centres - Max (mm)	1200
Secondary framework	Gypframe MF5 Ceiling Section	Secondary framework centres - Max (mm)	450
Framework fixing	British Gypsum Wafer Head Jack-Point Screws 13mm		
Framework fixing (alternative)	Gypframe MF9 Connecting Clip		

Ceiling sections fixed to primary framework using wafer head screws or clips.

Perimeter framing	Gypframe MF6 Perimeter Channel
-------------------	---------------------------------------

Perimeter channel suitably fixed to background at 600mm centres.

Insulation

Insulation, Layer 1	100mm Isover Spacesaver Ready-Cut
---------------------	--

Board and fixings

Ceiling board, Layer 1	Gyproc SoundBloc 12.5mm	Ceiling screws, Layer 1	British Gypsum Drywall Screws 25mm
Ceiling board, Layer 2	Gyproc SoundBloc 12.5mm	Ceiling screws, Layer 2	British Gypsum Drywall Screws 35mm

Fix ceiling boards securely to all supports at maximum 230mm centres (reduced to 150mm at board ends and at ceiling perimeters). All joints staggered between layers. Fix working from the centre of each board. Position screws not less than 13mm from cut edges and 10mm from bound edges of boards. Set screw heads flush with plasterboard surface; do not break paper or gypsum core.

Sealant	Gyproc Sealant
---------	-----------------------

Locate sealant at junctions with adjoining structure and other air paths. Apply as a continuous bead to clean, dry, dust-free surfaces, leaving no gaps.

Finish coat

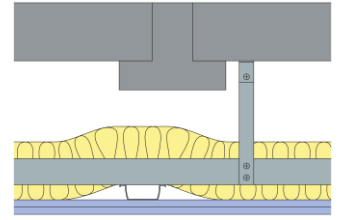
To achieve the specified performances, the system should be finished using either one of our Thistle or ThistlePro plasters, or Gyproc jointing products. See the product range guides on the British Gypsum website for more information.

Technical Specification

This document provides guidance on how to achieve performance and warranty requirements by exclusively using British Gypsum products or system specifications.

GypCeiling MF C100019 (EN)

GypCeiling MF suspended ceiling fixed to 150mm thick lightweight concrete joist floor (90kg/m²) to give a 240mm cavity and lined with two layers of Gyproc SoundBloc 12.5mm with 100mm Isover Spacesaver Ready-Cut in the cavity.



System performance

Please read performance data with any associated standards.

Sound insulation (Airborne) R_w (dB)	64
Sound insulation (Impact) L_{nw} (dB)	57
Minimum cavity / plenum (mm)	240
Maximum ceiling load (kg/m ²)	30
Approx. weight (kg/m ²)	23

Sound insulation (Airborne) $R_w + C_{tr}$ (dB)	55
---	-----------

Maximum cavity / plenum (mm)	5600
------------------------------	-------------

Standards

These standards relate to the above performance data.

BS 2750-6, Measurement of sound insulation in buildings and of building elements. Laboratory measurements of impact sound insulation of floors.

BS 2750-3, Measurement of sound insulation in buildings and of building elements. Laboratory measurements of airborne sound insulation of building elements.

Further information

SpecSure® system performance warranty confirms that British Gypsum proprietary systems will perform as specified for the lifetime of the building. The **SpecSure®** warranty requires that all components are specified in full and constructed in accordance with British Gypsum's installation guidance. For more details see the British Gypsum website. Always check with the design team before making any changes to the chosen specification, ensuring appropriate substantiation is sought to confirm that the solution still meets all required project performances.