

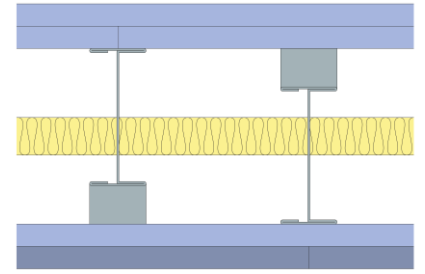
Technical Specification

This document provides guidance on how to achieve performance and warranty requirements by exclusively using British Gypsum products or system specifications.

GypWall Staggered

A233007 (A) MR1 (EN)

Two layers of Gyproc SoundBloc 12.5mm one side and an inner layer of Gyproc SoundBloc 12.5mm and an outer layer of Gyproc SoundBloc MR 12.5mm the other side of Gypframe 92 I 90 'I' Studs in Gypframe 148 FEC 50 Folded Edge Standard Floor & Ceiling Channel. Gypframe SC2 Spacer Clips and alternate studs staggered in the channel at 300mm centres. 25mm Isover Acoustic Partition Roll (APR 1200) in the cavity. For heights up to 4200mm.



Head design

Head channel	Gypframe 148 FEC 50 Folded Edge Standard Floor & Ceiling Channel
Gypframe channel suitably fixed to soffit at 600mm centres in two lines staggered by 300mm.	
Deflection allowance	Vertical deflection only. To be determined by a Structural Engineer.
Dropped soffit	For principles of deflection head construction refer to detail ST-123-Z2L2-08.

Framework

Stud	Gypframe 92 I 90 'I' Stud
Stud centres - Max (mm)	300
Two rows of Gypframe studs alternately staggered in Gypframe channel.	
Clips	Gypframe SC2 Spacer Clip
Clips positioned at the top and bottom of each Gypframe 'I' stud.	
Abutments and openings	Gypframe 146 S 50 'C' Stud
Gypframe 'C' stud suitably fixed to structure at 600mm centres in two lines staggered by 300mm.	
Base channel	Gypframe 148 FEC 50 Folded Edge Standard Floor & Ceiling Channel
Gypframe channel suitably fixed to floor at 600mm centres in two lines staggered by 300mm.	

Insulation

Insulation, Layer 1	25mm Isover Acoustic Partition Roll (APR 1200)
---------------------	-------------------------------------------------------

Board and fixings

Board side 1, Layer 1	Gyproc SoundBloc 12.5mm	Screws side 1, Layer 1	British Gypsum Jack-Point Screws 25mm
Board side 1, Layer 2	Gyproc SoundBloc 12.5mm	Screws side 1, Layer 2	British Gypsum Jack-Point Screws 35mm
Board side 2, Layer 1	Gyproc SoundBloc 12.5mm	Screws side 2, Layer 1	British Gypsum Jack-Point Screws 25mm
Board side 2, Layer 2	Gyproc SoundBloc MR 12.5mm	Screws side 2, Layer 2	British Gypsum Jack-Point Screws 35mm

Board layer 1 (inner), fix securely to Gypframe metal supports around the perimeter of the board at maximum 300mm centres; Board layer 2 (outer), fix securely to all Gypframe metal supports around the perimeter of the board and intermediate stud positions at maximum 300mm centres. External corners reduce fixings to 200mm. Drywall screws can be used for fixing boards to metal profiles with a thickness of 0.8mm or less. All joints staggered between layers. Fix working from the centre of each board. Position screws not less than 13mm from cut edges and 10mm from bound edges of boards. Set screw heads flush with plasterboard surface; do not break paper or gypsum core.

Fixing strap	Gypframe GFS1 Fixing Strap
Used to support horizontal board joints in face layer of multiple layer board linings and enable board screw fixing at 300mm centres.	
Sealant	Gyproc Sealant
Locate sealant at junctions with adjoining structure and other air paths. Apply as a continuous bead to clean, dry, dust-free surfaces, leaving no gaps. After application of sealant, bulk fill gaps between floor and underside of plasterboard using Gyproc joint compound.	

Finish coat

To achieve the specified performances, the system should be finished using either one of our Thistle or ThistlePro plasters, or Gyproc jointing products. See the product range guides on the British Gypsum website for more information. For further guidance on skimming moisture resistant grade boards see the White Book - Finishes section.

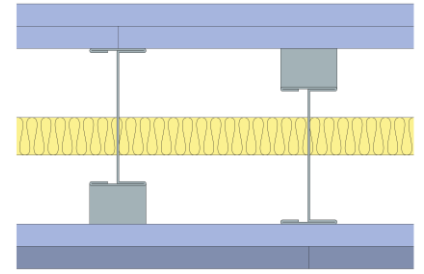
Technical Specification

This document provides guidance on how to achieve performance and warranty requirements by exclusively using British Gypsum products or system specifications.

GypWall Staggered

A233007 (A) MR1 (EN)

Two layers of Gyproc SoundBloc 12.5mm one side and an inner layer of Gyproc SoundBloc 12.5mm and an outer layer of Gyproc SoundBloc MR 12.5mm the other side of Gypframe 92 I 90 'I' Studs in Gypframe 148 FEC 50 Folded Edge Standard Floor & Ceiling Channel. Gypframe SC2 Spacer Clips and alternate studs staggered in the channel at 300mm centres. 25mm Isover Acoustic Partition Roll (APR 1200) in the cavity. For heights up to 4200mm.



System performance

Please read performance data with any associated standards.

Fire integrity (mins)	60
Maximum height (mm)	4200

Fire insulation (mins)	60
------------------------	-----------

The maximum heights quoted are limited by the fire state field of application or by limiting deflection of L/240 at 200 Pa, whichever is the lower of the two.

Sound insulation (Airborne) R_w (dB)	61
Duty rating	Severe
Partition thickness (mm)	198
Approx. weight (kg/m ²)	44

Sound insulation (Airborne) $R_w + C_{tr}$ (dB)	51
-------------------------------------------------	-----------

Standards

These standards relate to the above performance data.

BS EN 1364-1, Fire resistance tests for non-loadbearing elements - Walls.

BS 5234-2, Specification for performance requirements for strength and robustness including methods of test.

BS 2750-3, Measurement of sound insulation in buildings and of building elements. Laboratory measurements of airborne sound insulation of building elements.

Further information

SpecSure® system performance warranty confirms that British Gypsum proprietary systems will perform as specified for the lifetime of the building. The **SpecSure®** warranty requires that all components are specified in full and constructed in accordance with British Gypsum's installation guidance. For more details see the British Gypsum website. Always check with the design team before making any changes to the chosen specification, ensuring appropriate substantiation is sought to confirm that the solution still meets all required project performances.