

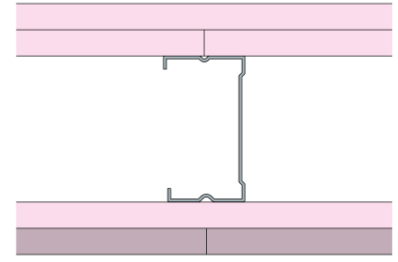
Technical Specification

This document provides guidance on how to achieve performance and warranty requirements by exclusively using British Gypsum products or system specifications.

GypWall Single Frame

A206079 MR1 (EN)

Two layers of Gyproc FireLine 12.5mm one side and an inner layer of Gyproc FireLine 12.5mm and an outer layer of Gyproc FireLine MR 12.5mm the other side of Gypframe 70 S 50 'C' Studs at 600mm centres. For heights up to 4200mm.



Head design

Head channel	Gypframe 72 FEC 50 Folded Edge Standard Floor & Ceiling Channel
--------------	--

Gypframe channel suitably fixed to soffit at 600mm centres.

Deflection allowance	Vertical deflection only. To be determined by a Structural Engineer.
Dropped soffit	For principles of deflection head construction refer to detail ST-121-Z1L2-09.

Framework

Stud	Gypframe 70 S 50 'C' Stud
Stud centres - Max (mm)	600
Abutments and openings	Gypframe 70 S 50 'C' Stud

Gypframe 'C' stud suitably fixed to structure at 600mm centres.

Base channel	Gypframe 72 FEC 50 Folded Edge Standard Floor & Ceiling Channel
--------------	--

Gypframe channel suitably fixed to floor at 600mm centres.

Insulation

No insulation

Board and fixings

Board side 1, Layer 1	Gyproc FireLine 12.5mm	Screws side 1, Layer 1	British Gypsum Drywall Screws 25mm
Board side 1, Layer 2	Gyproc FireLine 12.5mm	Screws side 1, Layer 2	British Gypsum Drywall Screws 35mm
Board side 2, Layer 1	Gyproc FireLine 12.5mm	Screws side 2, Layer 1	British Gypsum Drywall Screws 25mm
Board side 2, Layer 2	Gyproc FireLine MR 12.5mm	Screws side 2, Layer 2	British Gypsum Drywall Screws 35mm

Board layer 1 (inner), fix securely to Gypframe metal supports around the perimeter of the board at maximum 300mm centres; Board layer 2 (outer), fix securely to all Gypframe metal supports around the perimeter of the board and intermediate stud positions at maximum 300mm centres. External corners reduce fixings to 200mm. All joints staggered between layers. Fix working from the centre of each board. Position screws not less than 13mm from cut edges and 10mm from bound edges of boards. Set screw heads flush with plasterboard surface; do not break paper or gypsum core.

Fixing strap	Gypframe GFS1 Fixing Strap
--------------	-----------------------------------

Used to support horizontal board joints in face layer of multiple layer board linings and enable board screw fixing at 300mm centres.

Sealant	Gyproc Sealant
---------	-----------------------

Locate sealant at junctions with adjoining structure and other air paths. Apply as a continuous bead to clean, dry, dust-free surfaces, leaving no gaps. After application of sealant, bulk fill gaps between floor and underside of plasterboard using Gyproc joint compound.

Finish coat

To achieve the specified performances, the system should be finished using either one of our Thistle or ThistlePro plasters, or Gyproc jointing products. See the product range guides on the British Gypsum website for more information. For further guidance on skimming moisture resistant grade boards see the White Book - Finishes section.

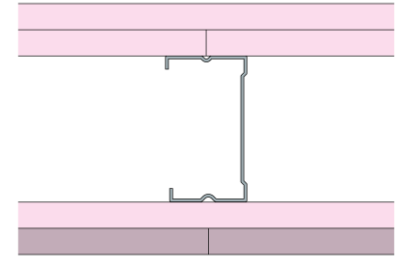
Technical Specification

This document provides guidance on how to achieve performance and warranty requirements by exclusively using British Gypsum products or system specifications.

GypWall Single Frame

A206079 MR1 (EN)

Two layers of Gyproc FireLine 12.5mm one side and an inner layer of Gyproc FireLine 12.5mm and an outer layer of Gyproc FireLine MR 12.5mm the other side of Gypframe 70 S 50 'C' Studs at 600mm centres. For heights up to 4200mm.



System performance

Please read performance data with any associated standards.

Fire integrity (mins)	120
Maximum height (mm)	4200

Fire insulation (mins)	120
------------------------	------------

The maximum heights quoted are limited by the fire state field of application or by limiting deflection of L/240 at 200 Pa, whichever is the lower of the two.

Sound insulation (Airborne) Rw (dB)	46
Duty rating	Severe
Partition thickness (mm)	122
Approx. weight (kg/m ²)	40

Standards

These standards relate to the above performance data.

BS EN 1364-1, Fire resistance tests for non-loadbearing elements - Walls.

BS 5234-2, Specification for performance requirements for strength and robustness including methods of test.

BS 2750-3, Measurement of sound insulation in buildings and of building elements. Laboratory measurements of airborne sound insulation of building elements.

Further information

SpecSure® system performance warranty confirms that British Gypsum proprietary systems will perform as specified for the lifetime of the building. The **SpecSure®** warranty requires that all components are specified in full and constructed in accordance with British Gypsum's installation guidance. For more details see the British Gypsum website. Always check with the design team before making any changes to the chosen specification, ensuring appropriate substantiation is sought to confirm that the solution still meets all required project performances.