

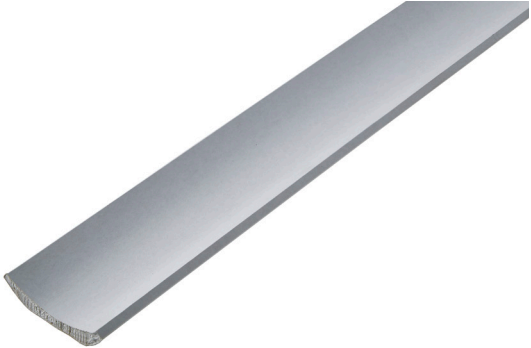
# Product data sheet

## Gyproc® Cove 100

Gyproc Cove 100 is a 'C' profile gypsum plaster cove.

### Where to use

Use it to conceal cable runs and mask settlement cracks.



### Product information

#### Composition

This product is made up of a gypsum plaster core encased in a white paper liner.

#### Colour

White.

#### Lengths available (mm)

3000.

### Performance

#### Standards

EN 14209:2017.

Declarations of Performance (DoP) available [Click here](#).

Reaction to fire	A2-s1, d0
------------------	-----------

### Installation guidance

#### Preparation

Ensure wall and ceiling backgrounds are sound, clean and dry, removing any wallpaper before attempting to fix the cove. For easier installation, draw guide lines along the wall and ceiling with a pencil at the appropriate distances. For Gyproc Cove 100, lines should be drawn at 67mm down the wall and 67mm across the ceiling. Scratch plastered or painted areas which will be in contact with the cove to provide a key for the adhesive, and brush away any dust or loose material.

#### Cutting

Cut the product to the required length using a cove mitre block and a fine tooth saw.

#### Fixing

Apply the adhesive in a 3mm thickness to both surfaces of the cove that will be in contact with the wall. For very dry plaster backgrounds or those with high suction, dampen down with a clean sponge and clean water immediately prior to adhesive application. This will prevent the adhesive drying out too rapidly.

When installing the cove lightly nail the line marked on the wall to provide temporary support to the profile until the adhesive has set. Use two nails for each piece. These should be removed once the adhesive is set. Offer up the profile and push it firmly into position between the guidelines.

# Product data sheet

## Gyproc® Cove 100



### Sitework

#### Packaging overview

Supplied in a cardboard box.

Quantity per carton	6 lengths
Cartons per pallet	56

#### Storage

Store in a dry place and keep out of sunlight.

### Environmental

#### Recyclability

This product can be recycled.

#### Disposal

Segregate the product from non-gypsum waste for recycling where possible, and dispose of it according to local authority requirements.

#### BES 6001 classification

Excellent.

**SAINT-GOBAIN**

British Gypsum  
Head Office, East Leake,  
Loughborough,  
Leicestershire, LE12 6HX  
T: 0115 945 1000



"Gyproc", "Thistle", "ThistlePro", "Gypframe" and "Glasroc" are all registered trademarks of Saint-Gobain Construction Products UK Limited. "Isover" is a registered trademark of Saint-Gobain Isover (French legal entity) and "Artex" is a registered trademark of Saint-Gobain Construction Products UK Limited.

Saint-Gobain Construction Products UK Limited is a limited company registered in England under company number 734396, having its registered office at Saint-Gobain House, East Leake, Loughborough, Leicestershire, LE12 6JU, UK. Saint-Gobain Construction Products UK Limited trades as British Gypsum for part of its business activities.

British Gypsum reserves the right to revise product specification without notice. The information herein should not be read in isolation as it is meant only as guidance for the user, who should always ensure that they are fully conversant with the products and systems being used and their subsequent installation prior to the commencement of work. For a comprehensive and up-to-date library of information visit the British Gypsum website at: [british-gypsum.com](http://british-gypsum.com). For information about products supplied by Artex Limited or Saint-Gobain Isover please see their respective websites.

"British Gypsum" is a registered trademark of Saint-Gobain Construction Products UK Limited.