

Product data sheet

Gypframe® Service Support Plate 12 mm

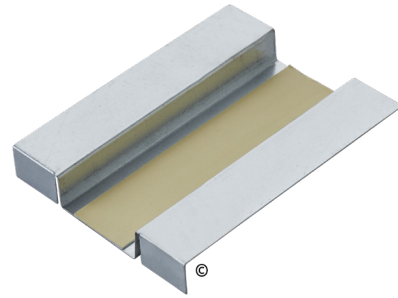
Steel service support plate.

Where to use

Service Support Plate used for the installation of Gyproc Habito within a partition cavity as a localised pattress.

Certifications

Environmental Product Declaration (EPD) available [Click here.](#)



Product information

Composition

Steel.

Colour

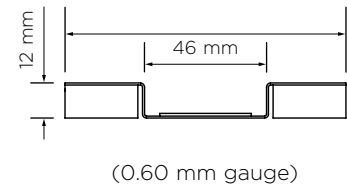
Steel.

Where to buy

[Click here.](#)

DIMENSIONS AND WEIGHTS

Lengths available (mm)	130
Bespoke length available	No
Width (mm)	106
Gauge (mm)	0.60
Weight (kg/lm)	-



Performance

Here we only provide performance information related to the product. Please see the White Book online for system-dependent performance.

Standards

No harmonised standard.

Reaction to fire	No performance determined, please contact Technical Support on british-gypsum.com for product component risk assessment
Yield strength (N/mm ²)	140

Installation guidance

Please see our White Book online for more information about installing and handling British Gypsum systems and Gypframe profiles. See the Gypframe Safety Data Sheet for guidance on health and safety, handling and storage.

Fixing compatibility

Check the system specification for the required British Gypsum screw type.

Product data sheet

Gypframe® Service Support Plate 12 mm

Sitework

Storage

The products should be stored inside on a flat and stable surface, away from any sources of moisture, heat or direct sunlight. If storing on a concrete floor, use dry timber platforms.

The products should not be stored near any edges, openings, walkways or traffic areas, where they could fall or cause obstruction.

Handling

British Gypsum fully accepts its responsibilities as a supplier of building materials and systems as required by Section 6 of the Health and Safety at Work etc. Act 1974.

To reduce manual handling risk, employers and workers should follow HSE's Manual Handling Operations Regulations 1992 (MHOR) and the HSE's guidance on manual handling at work (INDG143). Employers should carry out a risk assessment and implement control measures to avoid or minimise the need for manual handling. Workers should follow safe lifting and moving techniques and report any hazards.

When handling British Gypsum metal accessories please ensure you are wearing puncture-resistant protective gloves, sleeves and appropriate safety footwear.

Personal protective equipment for eye and face protection should also be worn that comply with European Standard EN166.

Safety Data Sheet

Gypframe metal components Safety Data Sheet (SDS) available. [Click here.](#)

Packaging overview

Supplied in a cardboard box.

Quantity per pack	100
-------------------	-----

Environmental

Recyclability

Gypframe components are 100% recyclable.

Disposal

Waste from Gypframe metal framing components is fully recyclable. The European Waste Catalogue code is 12 01 01.



"Gyproc", "Thistle", "ThistlePro", "Gypframe" and "Glasroc" are all registered trademarks of Saint-Gobain Construction Products UK Limited. "Isover" is a registered trademark of Saint-Gobain Isover (French legal entity) and "Okarno" is a registered trademark of Okarno Limited.

Saint-Gobain Construction Products UK Limited is a limited company registered in England under company number 734396, having its registered office at Saint-Gobain House, East Leake, Loughborough, Leicestershire, LE12 6JU, UK. Saint-Gobain Construction Products UK Limited trades as British Gypsum for part of its business activities.

British Gypsum reserves the right to revise product specification without notice. The information herein should not be read in isolation as it is meant only as guidance for the user, who should always ensure that they are fully conversant with the products and systems being used and their subsequent installation prior to the commencement of work. For a comprehensive and up-to-date library of information visit the British Gypsum website at: british-gypsum.com. For information about products supplied by Okarno Limited or Saint-Gobain Isover please see their respective websites.

"British Gypsum" is a registered trademark of Saint-Gobain Construction Products UK Limited.