

Product data sheet

Gypframe® GA5 Internal Fixing Angle

Steel angle providing framing stability and board support.

Where to use

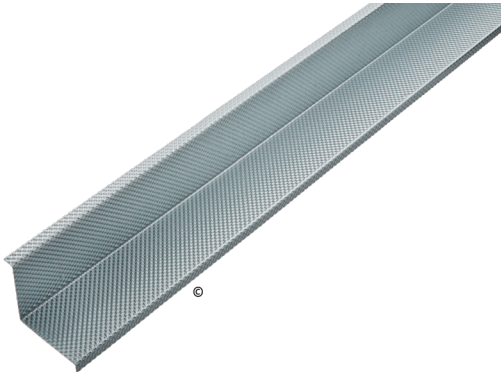
Used in framed construction to provide plasterboard support at corners supporting walls.

Certifications

Environmental Product Declaration (EPD) available.

[Click here](#) for the Gypframe profiles EPD.

[Click here](#) for the Carbon Low EPD. Carbon Low profiles are Gypframe metal profiles manufactured from lower carbon steel.



Product information

Composition

Cold-roll steel formed using the patented UltraSTEEL® process.

Colour

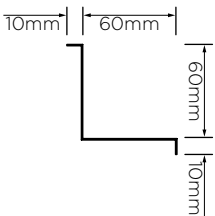
Steel.

Where to buy

[Click here.](#)

DIMENSIONS AND WEIGHTS

Lengths available (mm)	3600
Bespoke length available	No
Width (mm)	60 x 60
Gauge (mm)	0.50
Weight (kg/lm)	0.53



Performance

Here we only provide performance information related to the product. Please see the White Book online for system-dependent performance.

Standards

EN 14195:2005.

Declarations of Performance (DoP) available [Click here.](#)

Reaction to fire	A1
Yield strength (N/mm ²)	210

Installation guidance

Please see our White Book online for more information about installing and handling British Gypsum systems and Gypframe profiles. See the Gypframe Safety Data Sheet for guidance on health and safety, handling and storage.

Fixing compatibility

Check the system specification for the required British Gypsum screw type.

Product data sheet

Gypframe® GA5 Internal Fixing Angle



Sitework

Storage

Store inside where possible, for outdoor storage please ensure that the products are securely covered with an anchored polythene sheet or tarpaulin to protect from dampness and rain.

Handling

British Gypsum fully accepts its responsibilities as a supplier of building materials and systems as required by Section 6 of the Health and Safety at Work etc. Act 1974.

To reduce manual handling risk, employers and workers should follow HSE's Manual Handling Operations Regulations 1992 (MHOR) and the HSE's guidance on manual handling at work (INDG143). Employers should carry out a risk assessment and implement control measures to avoid or minimise the need for manual handling. Workers should follow safe lifting and moving techniques and report any hazards.

When handling Gypframe metal please ensure you are wearing puncture-resistant protective gloves, sleeves and appropriate safety footwear.

Personal protective equipment for eye and face protection should also be worn that comply with European Standard EN166.

Safety Data Sheet

Gypframe metal components Safety Data Sheet (SDS) available. [Click here.](#)

Packaging overview

These components are supplied in packs banded together with nylon strapping.

Quantity per pack	10
-------------------	----

Environmental

Recyclability

Gypframe components are 100% recyclable.

Disposal

Waste from Gypframe metal framing components is fully recyclable. The European Waste Catalogue code is 12 01 01.

BES 6001 classification

Excellent.

Carbon Low

Gypframe metal profiles manufactured from lower carbon steel are now available for this product. These profiles are printed Carbon Low to distinguish them from standard profiles. To learn more about these innovative products, [Click here.](#)



"Gyproc", "Thistle", "ThistlePro", "Gypframe" and "Glasroc" are all registered trademarks of Saint-Gobain Construction Products UK Limited. "Isover" is a registered trademark of Saint-Gobain Isover (French legal entity) and "Okarno" is a registered trademark of Okarno Limited.

Saint-Gobain Construction Products UK Limited is a limited company registered in England under company number 734396, having its registered office at Saint-Gobain House, East Leake, Loughborough, Leicestershire, LE12 6JU, UK. Saint-Gobain Construction Products UK Limited trades as British Gypsum for part of its business activities.

British Gypsum reserves the right to revise product specification without notice. The information herein should not be read in isolation as it is meant only as guidance for the user, who should always ensure that they are fully conversant with the products and systems being used and their subsequent installation prior to the commencement of work. For a comprehensive and up-to-date library of information visit the British Gypsum website at: british-gypsum.com. For information about products supplied by Okarno Limited or Saint-Gobain Isover please see their respective websites.

"British Gypsum" is a registered trademark of Saint-Gobain Construction Products UK Limited.