

# Product data sheet

## Gypframe® 92 S 10 'C' Stud

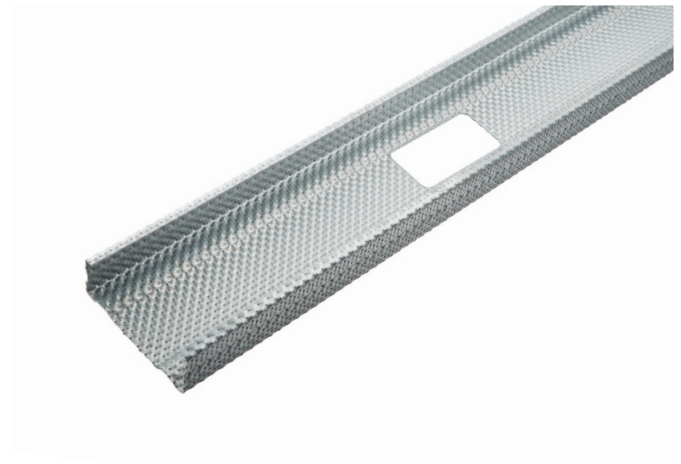
Gypframe 'C' studs are cold-rolled steel studs with a 'C' section profile. They include sight lines down the flanges and service cut-outs in the web.

### Where to use

These studs provide vertical framing support in British Gypsum partitions and linings, as defined by the system design. They're available in a range of lengths depending on project requirements.

### Certifications

Environmental Product Declaration (EPD) available [Click here.](#)



### Product information

#### Composition

Gypframe studs are cold-roll formed from DX51D + Z140 NA-C galvanised steel using the patented UltraSTEEL® process.

#### Colour

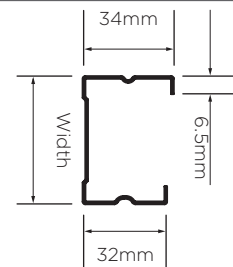
Steel.

#### Where to buy

[Click here.](#)

### DIMENSIONS AND WEIGHTS

Lengths available (mm)	3600, 4200
Bespoke length available	Yes
Width (mm)	92
Gauge (mm)	1.00
Weight (kg/lm)	1.29



### Performance

Here we only provide performance information related to the product. Please see the White Book online for system-dependent performance.

#### Standards

EN 14195:2005.

Declarations of Performance (DoP) available [Click here.](#)

Reaction to fire	A1
Yield strength (N/mm <sup>2</sup> )	210

### Installation guidance

Please see our White Book online for more information about installing and handling British Gypsum systems and Gypframe profiles. See the Gypframe Safety Data Sheet for guidance on health and safety, handling and storage.

### Fixing compatibility

Check the system specification for the required British Gypsum screw type.

# Product data sheet

## Gypframe® 92 S 10 'C' Stud

### Sitework

#### Safety Data Sheet

Gypframe metal components Safety Data Sheet (SDS) available. [Click here.](#)

#### Packaging overview

These components are supplied in packs banded together with nylon strapping.

Quantity per pack	10
-------------------	----

### Environmental

#### Recyclability

Gypframe components are 100% recyclable.

#### Disposal

Waste from Gypframe metal framing components is fully recyclable. The European Waste Catalogue code is 12 01 01.

#### BES 6001 classification

Excellent.



**SAINT-GOBAIN**

**British Gypsum**  
 Head Office, East Leake,  
 Loughborough,  
 Leicestershire, LE12 6HX  
 T: 0115 945 1000



"Gyproc", "Thistle", "Gypframe" and "Glasroc" are all registered trademarks of Saint-Gobain Construction Products UK Limited. "Isover" is a registered trademark of Saint-Gobain Isover and "Artex" is a registered trademark of Saint-Gobain Construction Products UK Limited.

Saint-Gobain Construction Products UK Limited is a limited company registered in England under company number 734396, having its registered office at Saint-Gobain House, East Leake, Loughborough, Leicestershire, LE12 6JU, UK. Saint-Gobain Construction Products UK Limited trades as British Gypsum for part of its business activities.

British Gypsum reserves the right to revise product specification without notice. The information herein should not be read in isolation as it is meant only as guidance for the user, who should always ensure that they are fully conversant with the products and systems being used and their subsequent installation prior to the commencement of work. For a comprehensive and up-to-date library of information visit the British Gypsum website at: [british-gypsum.com](http://british-gypsum.com). For information about products supplied by Artex Limited or Saint-Gobain Isover please see their respective websites.

"British Gypsum" is a registered trademark of Saint-Gobain Construction Products UK Limited.