

# Installation guidance

ThistlePro® FastSet Finish

TIMES ARE APPROXIMATE

## 0 mins



Add approx 11.5 litres of clean water per 25kg bag to mixing bucket. Gradually add the plaster to water whilst mixing



Complete 1<sup>st</sup> coat (1mm thick)

## 10 - 15 mins



Complete 2<sup>nd</sup> coat (1mm thick), the total thickness for both coats should be a minimum of 2mm

## 15 - 25 mins



Closing in

## 35 mins



1<sup>st</sup> trowel

## 45 mins

2<sup>nd</sup> trowel

## 70 mins

Final trowel to a flat, matt finish (lubricated with minimal water)

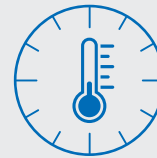
### Note:

Ensure that the product is suitable for the background to which it is being applied by using the Thistle Plaster Selector Guide.

For fastest finish, we recommend a single mix for both first and second coat.



Finishing times are **reduced** by suction



Finishing times are **extended** by cold weather conditions

**Times and processes are given as guidance. On site practice may vary.**