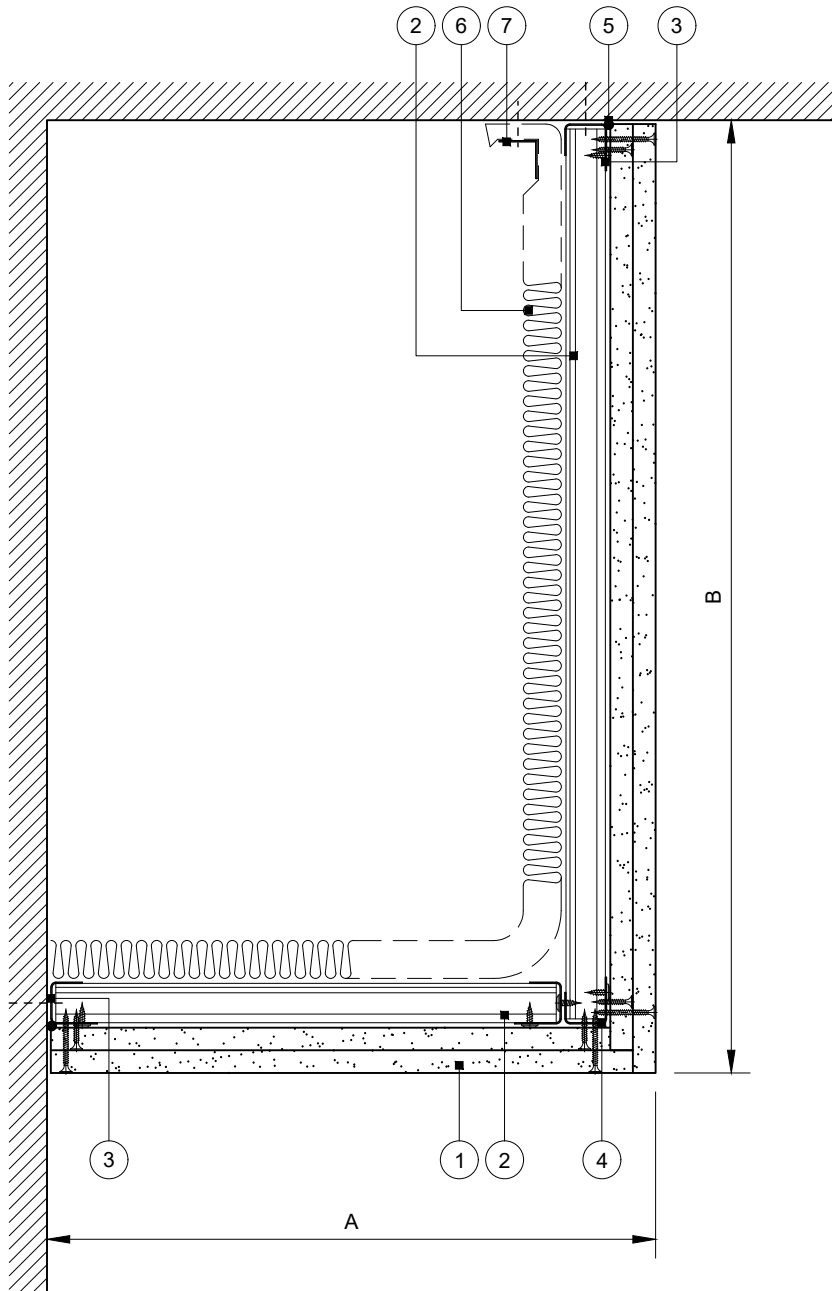


# Construction Detail

This drawing provides guidance to achieve indicative performance criteria for specific design conditions

## GypCeiling MF



- 1 2 layers 15mm Glasroc F FireCase fixed with 25mm and 40mm British Gypsum Drywall Screws at 230mm centres in field of board and 150mm centres at board ends
- 2 Gypframe MF5 Ceiling Sections at max. 450mm centres fixed to MF6 at each end with suitable British Gypsum wafer head screws
- 3 Gypframe MF6 Perimeter Channel suitably fixed to wall/soffit at 600mm centres
- 4 Gypframe MF6 Perimeter Channels fixed together with suitable British Gypsum wafer head screws at 600mm centres
- 5 Gyproc Sealant for optimum sound insulation
- 6 25mm stone mineral wool 100 kg/m<sup>3</sup> density by others
- 7 Gypframe steel angle or timber batten suitably fixed to channel to retain insulation

Dimensions A + B = Max. 1200mm  
Horizontal span of MF5 = Max. 1200mm

## Bulkhead

MF5 perpendicular to wall

### Important information

Fire resistance BS EN 1364-2

- Estimated 60 minutes through lining from room side
- Estimated 60 minutes through ceiling from below

As there is no recognised method for fire resistance testing of junctions, any performance characteristics, stated or inferred, in this detail are estimated based on each system tested in isolation and other relevant test data. The drawing should be approved by the project design and management authority before use to ensure that it meets with their specific project requirements

Title: Construction detail

Scale at A4: 1:5

Drawn: MRC

Date: December 2021

Approved: MKF JMC

Dwg No.: CN-321-016

Revision:

Technical Support Team | british-gypsum.com

This drawing is provided to customers free of charge and the details shown are subject to the accuracy of the information provided to British Gypsum at the time the drawing was originally requested. The drawing should therefore be approved by the project design and management authority before use to ensure that it meets with their specific project requirements. It should also be read in conjunction with British Gypsum's current literature available at [www.british-gypsum.com](http://www.british-gypsum.com). Taping and finishing in accordance with British Gypsum's current recommendations is assumed (with the exception of FireCase system). Please note the drawing may show British Gypsum products fixed by or to products that are non-British Gypsum products/fixings please refer to Specifying Authority for specification details. This drawing is valid at the time of issue, please check with British Gypsum for the latest version. No duty of care is owed to the recipient or any third party and British Gypsum excludes all liability in respect of the details shown save where death or personal injury is caused due to British Gypsum's negligence or for fraud.