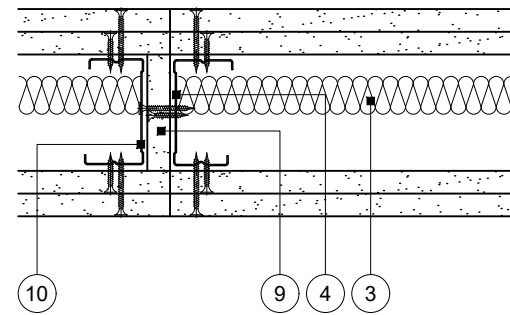
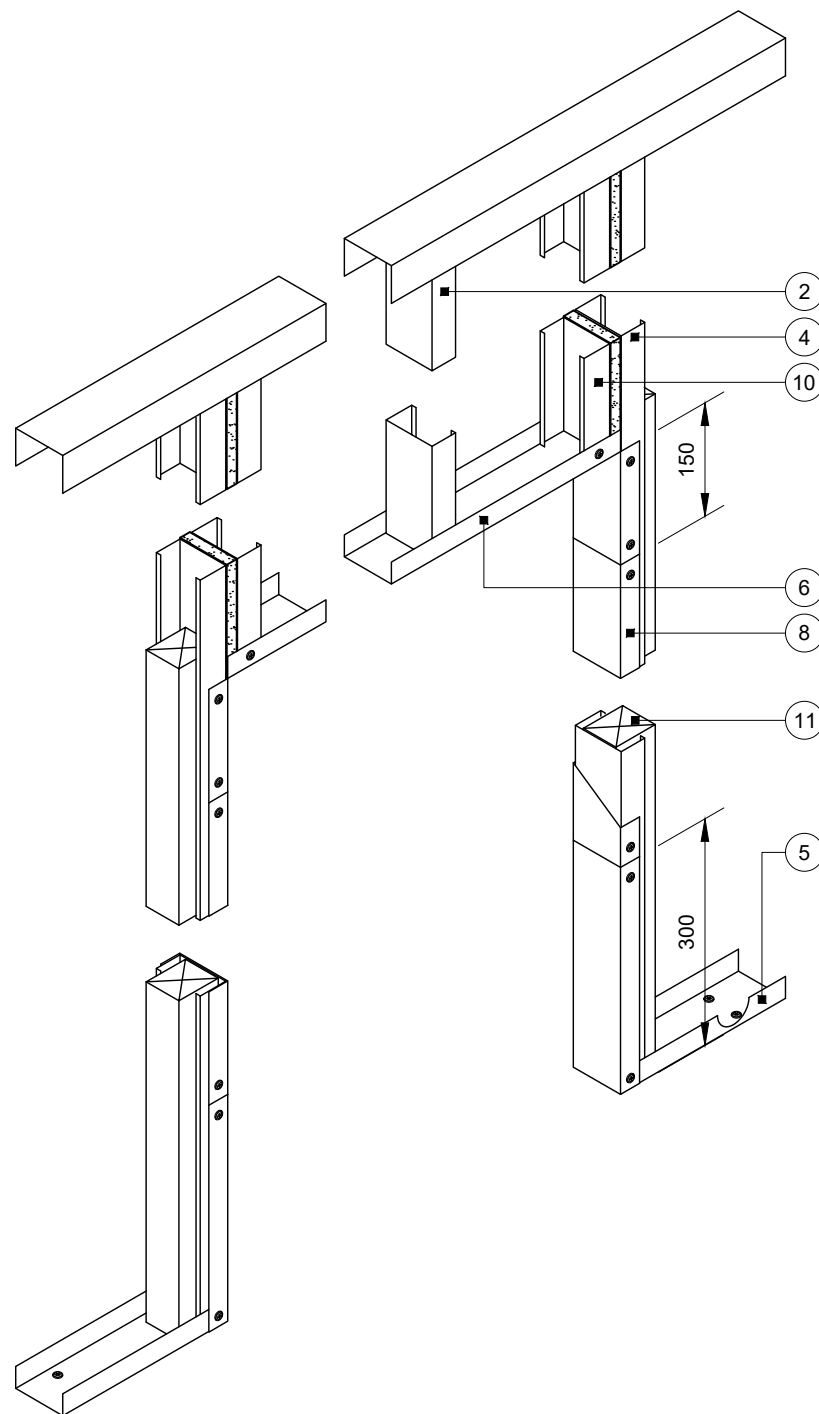


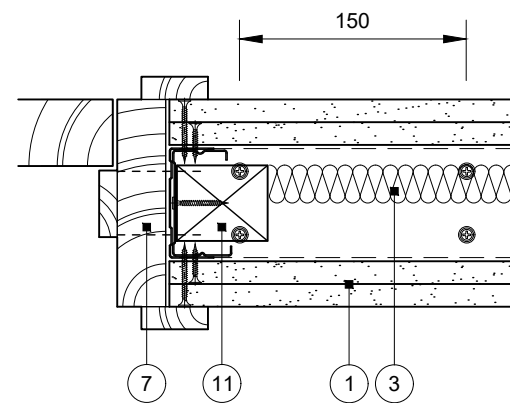
# Construction Detail

This drawing provides guidance to achieve indicative performance criteria for specific design conditions

## GypWall Single Frame



Plan section above door opening

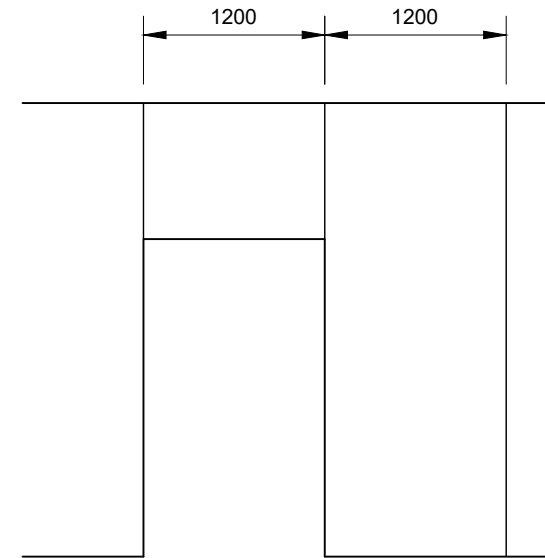


Plan section at floor level

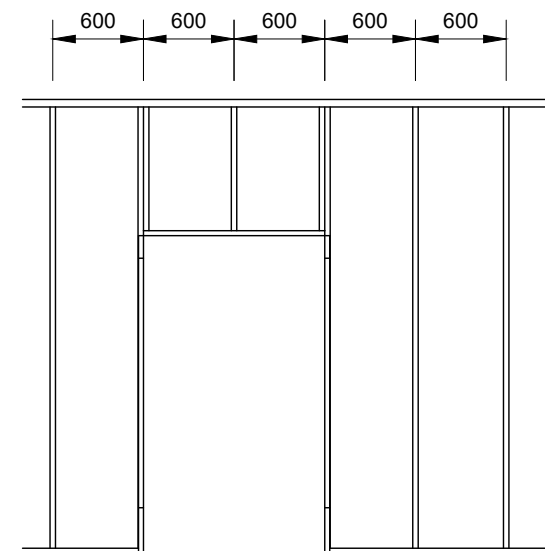
**Important information**

**Non-fire rated**

Subject to supporting construction specification and suitable substantiation from the door manufacturer, the detail could be fire rated. The drawing should be approved by the project design and management authority before use to ensure that it meets with their specific project requirements



Partition elevation  
Showing plasterboard joints



Partition elevation  
Showing channels and studs

- 1 Two layers 12.5mm Gyproc SoundBloc fixed with 25mm and 35mm British Gypsum Drywall Screws at 300mm centres (200mm centres at external angles)
- 2 Gypframe 70 S 50 'C' studs at 600mm centres to maintain stud module
- 3 Isover insulation where required
- 4 Gypframe 70 S 50 'C' stud at jambs
- 5 Gypframe 72 FEC 50 Folded Edge Channel suitably fixed to floor with two pairs of fixings at 150mm centres (four total) and at 600mm centres thereafter. Channel cut and bent to extend 300mm up stud and fixed through both flanges with two British Gypsum Wafer Head Drywall Screws.
- 6 Gypframe 72 FEC 50 Folded Edge Channel cut and bent to extend 150mm down stud and fixed through both flanges with two British Gypsum Wafer Head Drywall Screws.
- 7 Indicative timber door frame and architrave
- 8 Gypframe 72 FEC 50 Folded Edge Channel sleeved over stud between returned channels at opening head and base and fixed through both flanges to Gypframe 70 S 50 stud at 400mm centres with British Gypsum Wafer Head Drywall Screws
- 9 Stud width strip of 12.5mm Gyproc SoundBloc fixed with British Gypsum Drywall Screws at 300mm centres
- 10 Gypframe 70 S 50 'C' stud fixed through to adjacent stud with 40mm British Gypsum Drywall Screws at 300mm centres
- 11 60mm x 50mm timber stud to extend nominal 50mm above opening height and fixed into jamb stud with 35mm British Gypsum Drywall Screws at 300mm centres

### Door opening width up to 1200mm

Low waste door opening  
Maximum door weight 60kg to BS 5234: Parts 1 & 2: 1992 - Heavy and Severe Duty

Title: Construction detail

Scale at A3: 1:10 1:50

Drawn: MBH

Date: July 2024

Approved: MKF JMC

Dwg No.: CN-121-109

Revision: -

Technical Support Team | british-gypsum.com

This drawing is provided to customers free of charge and the details shown are subject to the accuracy of the information provided to British Gypsum at the time the drawing was originally requested. The drawing should therefore be approved by the project design and management authority before use to ensure that it meets with their specific project requirements. It should also be read in conjunction with British Gypsum's current literature available at www.british-gypsum.com. Taping and finishing in accordance with British Gypsum's current recommendations is assumed (with the exception of FireCase system). Please note the drawing may show British Gypsum products fixed by or to products that are non-British Gypsum products/fixings please refer to Specifying Authority for specification details. This drawing is valid at the time of issue, please check with British Gypsum for the latest version. No duty of care is owed to the recipient or any third party and British Gypsum excludes all liability in respect of the details shown save where death or personal injury is caused due to British Gypsum's negligence or for fraud.