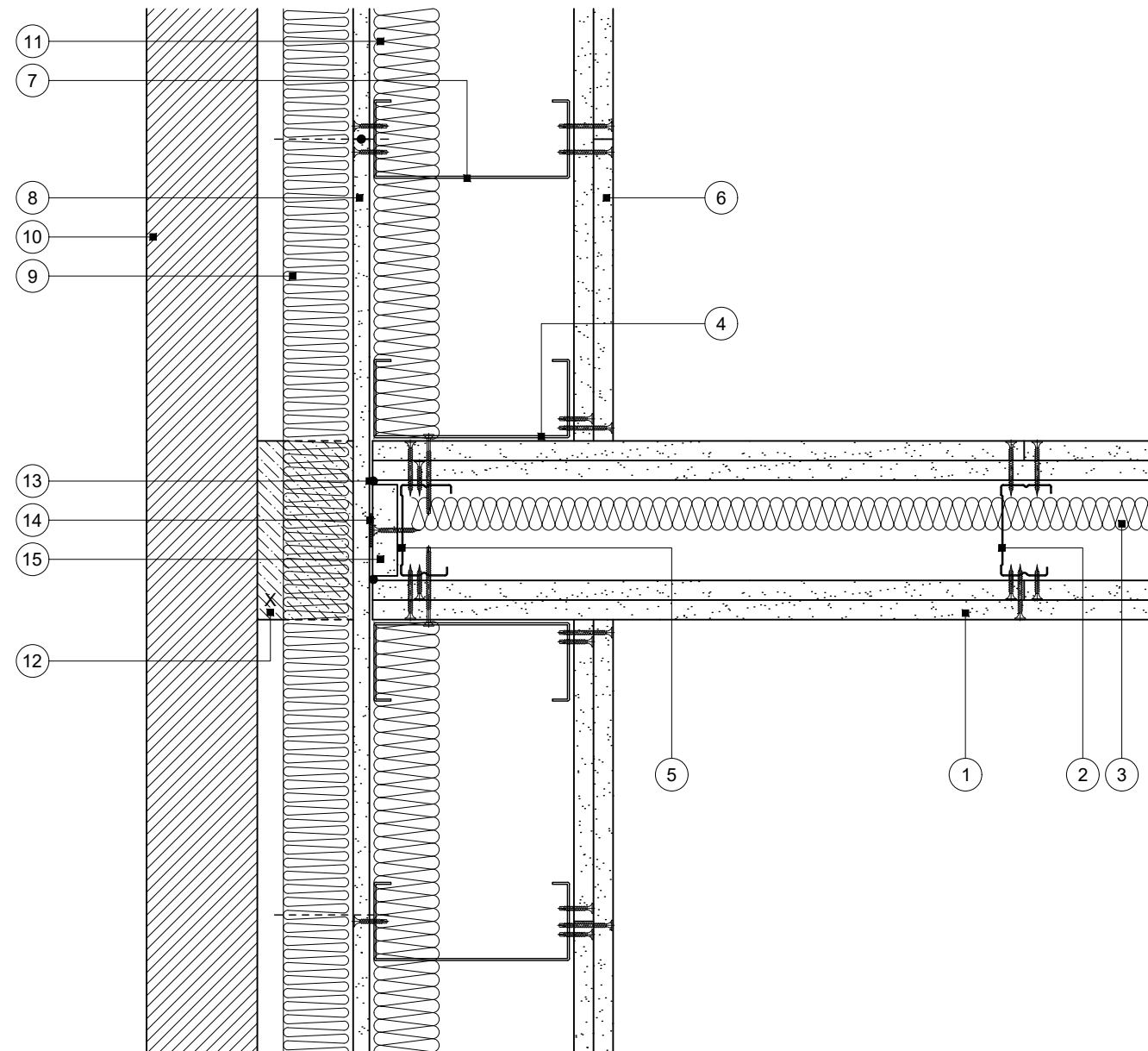


Construction Detail

This drawing provides guidance to achieve indicative performance criteria for specific design conditions

GypWall Single Frame, GypWall Single Frame Enhanced and GypLyner Xternal



- 1 Two layers Gyproc plasterboard or Glasroc specialist board fixed with suitable British Gypsum screws at 300mm centres (200mm centres at external angles)
- 2 Gypframe 'C' studs at specified centres
- 3 Isover insulation where required
- 4 Additional SFS stud fixed through board to stud with suitable screws (British Gypsum Jack-Point Screws max. 2mm metal thickness) at 600mm centres
- 5 Additional Gypframe 'C' stud at junction
- 6 Two layers 15mm Gyproc SoundBloc fixed with 25mm and 41mm British Gypsum Jack-Point Screws (max. 2mm metal thickness) at 300mm centres
- 7 Indicative Hadley SFS studs at specified centres
- 8 One layer 12.5mm Glasroc X Sheathing Board fixed with 25mm Glasroc X Screws (max. 2mm metal thickness) at 300mm centres. Continuous 6mm bead of Glasroc X Sealant at board joints
- 9 Isover Polterm Max Plus (thickness to suit specification) suitably fixed through board to SFS studs
- 10 Indicative external finish
- 11 Indicative insulation
- 12 Cavity barrier where required (see important information)
- 13 Gyproc Sealant for optimum sound insulation
- 14 Gyproc FireStrip
- 15 Stud width strip of 19mm Gyproc CoreBoard or 20mm Glasroc F FireCase pre-fixed to stud with suitable British Gypsum screws at 600mm centres

Important information

Fire resistance BS EN 1364-1

- 30 or 60 minutes through partition subject to specification
- Up to 60 minutes through non-load bearing British Gypsum GypLyner Xternal SFS wraparound system subject to specification

Where using British Gypsum GypLyner Xternal SFS wraparound system as there is no recognised method for the fire resistance testing of junction, any performance characteristics, stated or inferred, in this detail are estimated based on each system tested in isolation and other relevant test data*

Subject to regulatory requirements for cavity barrier installations and fire resistance of insulation board used in steel frame lining cavity, it may be necessary to include a cavity barrier to external cladding*

The exact construction depicted on this drawing has not been tested and assumes materials highlighted with 'X' are capable of maintaining performances of the partition. This MUST be verified with the relevant material manufacturer prior to construction

- * The drawing should be approved by the project design and management authority before use to ensure that it meets with their specific project requirements and the overall fire strategy for compartmentation and cavity barrier requirements (as per Approved Document B)

External SFS wall abutment with partition penetration and additional SFS studs

Rev. A 08.09.23 Updated 'Important Information' (MBH)

Title: Construction detail

Scale at A3: 1:5

Drawn: NCL

Date: August 2022

Approved: MKF JMC

Dwg No.: CN-121-102

Revision: A

Technical Support Team | british-gypsum.com

This drawing is provided to customers free of charge and the details shown are subject to the accuracy of the information provided to British Gypsum at the time the drawing was originally requested. The drawing should therefore be approved by the project design and management authority before use to ensure that it meets with their specific project requirements. It should also be read in conjunction with British Gypsum's current literature available at www.british-gypsum.com. Taping and finishing in accordance with British Gypsum's current recommendations is assumed (with the exception of FireCase system). Please note the drawing may show British Gypsum products fixed by or to products that are non-British Gypsum products/fixings please refer to Specifying Authority for specification details. This drawing is valid at the time of issue, please check with British Gypsum for the latest version. No duty of care is owed to the recipient or any third party and British Gypsum excludes all liability in respect of the details shown save where death or personal injury is caused due to British Gypsum's negligence or for fraud.