

Construction Detail

This drawing provides guidance to achieve indicative performance criteria for specific design conditions

GypWall Single Frame

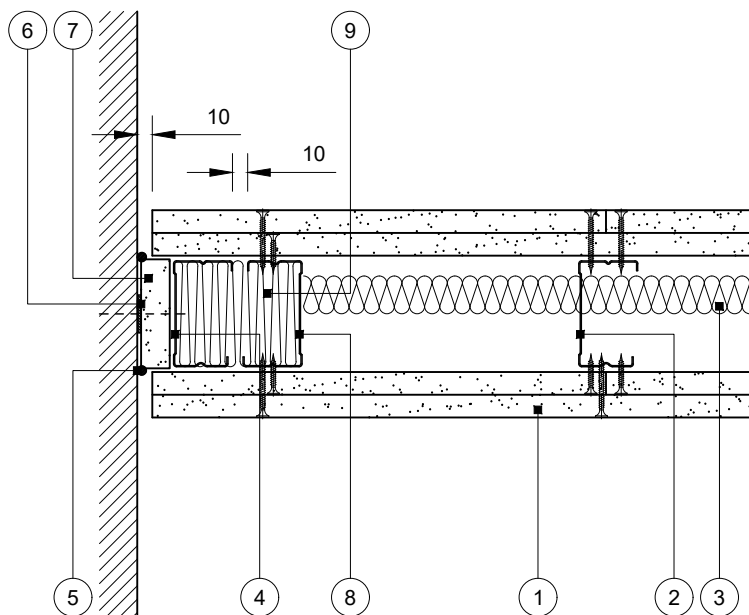
- 1 Two layers Gyproc plasterboard or Glasroc specialist board fixed with suitable British Gypsum screws at 300mm centres (200mm centres at external angles)
- 2 Gypframe 'C' studs at specified centres
- 3 Isover insulation where required
- 4 Gypframe 'C' stud suitably fixed through board to wall at 600mm centres (in two lines staggered by 300mm for 92mm and 146mm studs)
- 5 Gyproc Sealant for optimum sound insulation
- 6 Gyproc FireStrip
- 7 One stud width strip of 19mm Gyproc CoreBoard
- 8 Additional Gypframe 'C' stud
- 9 Stone mineral wool 33kg/m³ minimum density manufactured and supplied by others

! Important information

Fire resistance BS EN 1364-1

- Estimated 60 minutes through partition subject to specification

Performance is based on maintaining compartmentation through the British Gypsum partition up to the line of the abutting structural element. This is on the basis the structural element has at least the equivalent fire resistance performance to that of the partition. The design team need to seek approval of the relevant controlling authority prior to construction



Wall abutment with lateral deflection

10mm movement (compression)

No acoustic performance requirement

Title: Construction detail

Scale at A4: 1:5

Date: March 2022

Dwg No.: CN-121-072

Drawn: MRC

Approved: MKF JMC

Revision:

Technical Support Team | british-gypsum.com

This drawing is provided to customers free of charge and the details shown are subject to the accuracy of the information provided to British Gypsum at the time the drawing was originally requested. The drawing should therefore be approved by the project design and management authority before use to ensure that it meets with their specific project requirements. It should also be read in conjunction with British Gypsum's current literature available at www.british-gypsum.com. Taping and finishing in accordance with British Gypsum's current recommendations is assumed (with the exception of FireCase system). Please note the drawing may show British Gypsum products fixed by or to products that are non-British Gypsum products/fixings please refer to Specifying Authority for specification details. This drawing is valid at the time of issue, please check with British Gypsum for the latest version. No duty of care is owed to the recipient or any third party and British Gypsum excludes all liability in respect of the details shown save where death or personal injury is caused due to British Gypsum's negligence or for fraud.