

Standard Detail

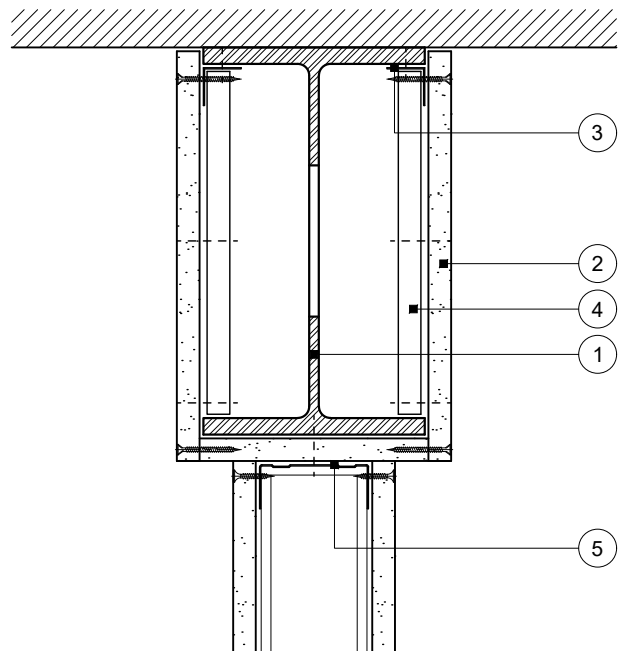
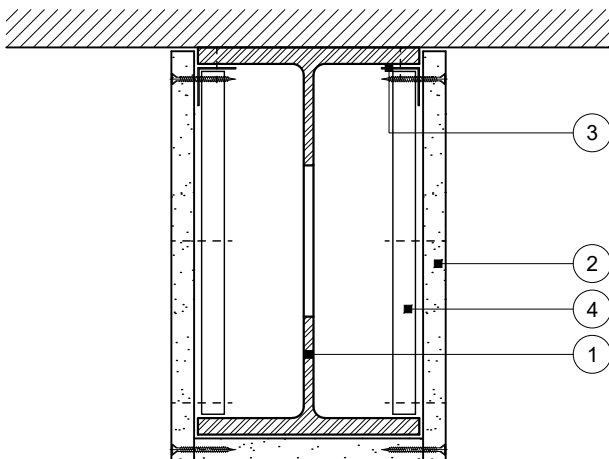
This drawing provides general guidance where no performance criteria is given and site specific conditions are not taken into account

FireCase

- 1 Indicative steel castellated / cellular beam
- 2 One layer Glasroc F FireCase fixed together and to steel angles with Glasroc F FireCase Screws at 150mm centres. Board joints staggered by minimum 600mm between adjacent sides
- 3 Gypframe FEA1 Steel Angle suitably fixed to beam flange at 600mm centres
- 4 60mm wide Glasroc F FireCase backing strip at board joints
- 5 Gypframe channel suitably fixed through board to beam at 600mm centres (in two lines staggered by 300mm for 94mm and 148mm channels)

! Important information

Beams - Ensure all boards are cut square to maintain tight butt joints with no gaps, and the board-to-board edge fixings going through the vertical fascia board are secured into the centre of the Glasroc F FireCase soffit board



Three sided beam encasement

Maximum 600mm beam height

Beam and partition junction

Maximum 600mm beam height

Title: FireCase
Steel angles and one layer board
Standard details read with project specification

Scale at A4: 1:5
Date: Dec 2023
Dwg No.: ST-421-ANL1-03

Drawn: DRM
Approved: MKF
Revision:

Technical Support Team | british-gypsum.com

This drawing is provided to customers free of charge and the details shown are subject to the accuracy of the information provided to British Gypsum at the time the drawing was originally requested. The drawing should therefore be approved by the project design and management authority before use to ensure that it meets with their specific project requirements. It should also be read in conjunction with British Gypsum's current literature available at www.british-gypsum.com. Taping and finishing in accordance with British Gypsum's current recommendations is assumed (with the exception of FireCase system). Please note the drawing may show British Gypsum products fixed by or to products that are non-British Gypsum products/fixings please refer to Specifying Authority for specification details. This drawing is valid at the time of issue, please check with British Gypsum for the latest version. No duty of care is owed to the recipient or any third party and British Gypsum excludes all liability in respect of the details shown save where death or personal injury is caused due to British Gypsum's negligence or for fraud.