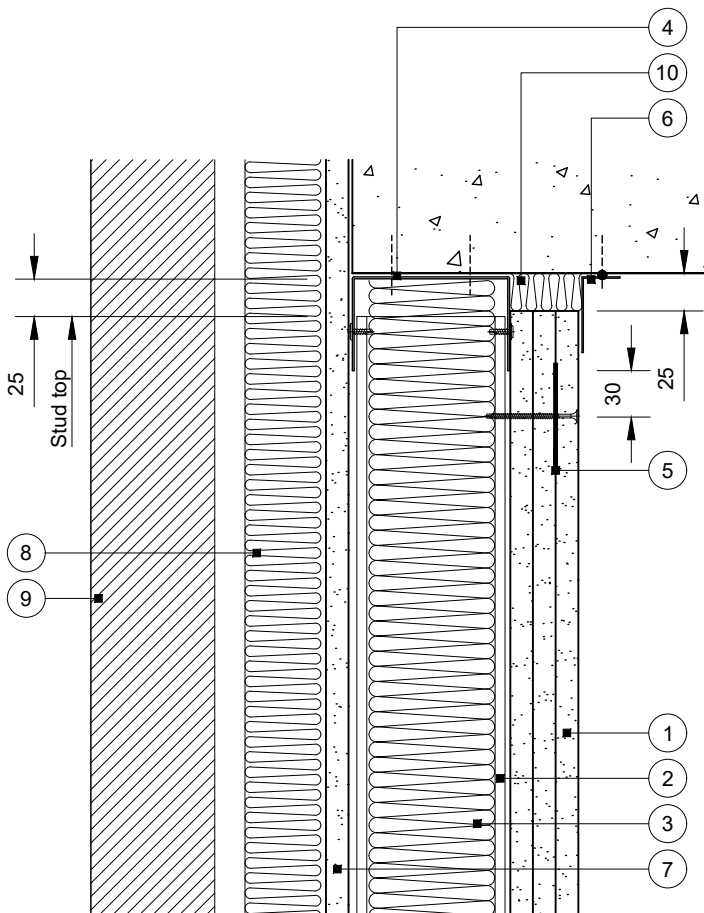


# Standard Detail

This drawing provides general guidance where no performance criteria is given and site specific conditions are not taken into account

## GypLyner Xternal

- 1 Three layers Gyproc plasterboard or Glasroc specialist board fixed with suitable British Gypsum screws at 300mm centres (200mm centres at external angles)
- 2 Indicative Intrastack SFS studs at specified centres fixed to slotted head track with two suitable British Gypsum screws
- 3 Isover insulation where required
- 4 Indicative Intrastack slotted head track fixed to soffit
- 5 Gypframe GFS1 Fixing Strap to receive uppermost board fixings (no fixings into head channel)
- 6 Gypframe GA4 Steel Angle bedded on a continuous bead of Gyproc Sealant and suitably fixed to soffit at 600mm centres with fire resistant fixings
- 7 One layer 12.5mm Glasroc X Sheathing Board fixed with 25mm Glasroc X Screws (max. 2mm metal thickness) at 300mm centres. Continuous 6mm bead of Glasroc X Sealant at board joints
- 8 Isover Polterm Max Plus (thickness to suit specification) suitably fixed through board to SFS studs
- 9 Indicative external finish with appropriate cavity barriers by others
- 10 Stone mineral wool 33kg/m<sup>3</sup> minimum density by others



A 25mm designed deflection head gap could accommodate approximately 20mm downward movement. This is due to the stone mineral wool in the head not being able to fully compress

### Deflection head

20mm Downward movement

### Important information

Fire resistance BS EN 1364-1

- Up to 120 minutes through wall subject to specification

**Title:** GypLyner Xternal  
SFS studs and three layers board  
Standard details read with project specification

**Scale at A4:** 1:5  
**Date:** December 2024  
**Dwg No.:** ST-225-ZZL3-03

**Drawn:** MBH  
**Approved:** MFK JMC  
**Revision:** -

Technical Support Team | british-gypsum.com

This drawing is provided to customers free of charge and the details shown are subject to the accuracy of the information provided to British Gypsum at the time the drawing was originally requested. The drawing should therefore be approved by the project design and management authority before use to ensure that it meets with their specific project requirements. It should also be read in conjunction with British Gypsum's current literature available at [www.british-gypsum.com](http://www.british-gypsum.com). Taping and finishing in accordance with British Gypsum's current recommendations is assumed (with the exception of FireCase system). Please note the drawing may show British Gypsum products fixed by or to products that are non-British Gypsum products/fixings please refer to Specifying Authority for specification details. This drawing is valid at the time of issue, please check with British Gypsum for the latest version. No duty of care is owed to the recipient or any third party and British Gypsum excludes all liability in respect of the details shown save where death or personal injury is caused due to British Gypsum's negligence or for fraud.