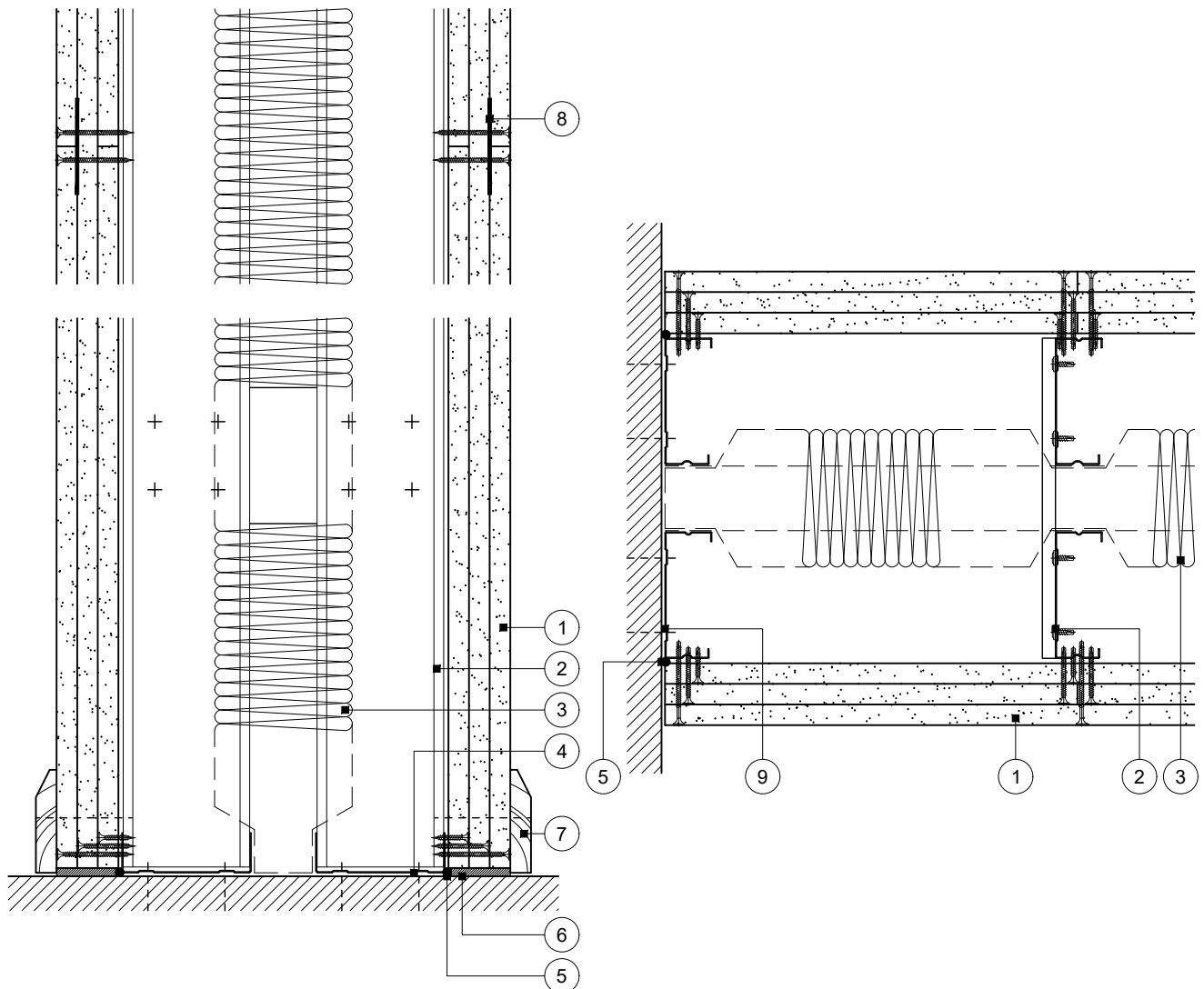


Standard Detail

This drawing provides general guidance where no performance criteria is given and site specific conditions are not taken into account

GypWall Twin Frame Audio

- 1 Three layers Gyproc plasterboard or Glasroc specialist board fixed with suitable British Gypsum screws at 300mm centres (200mm centres at external angles)
- 2 Two lines of Gypframe 'C' studs at specified centres cross braced with Gypframe 99 FC 50 Fixing Channel at 3600mm centres (staggered by 1800mm between stud pairs) fixed to each stud with four suitable British Gypsum wafer head screws
- 3 Isover insulation and/or stone mineral wool where required
- 4 Gypframe Channel suitably fixed to floor at 600mm centres in two lines staggered by 300mm. Deep Channel for heights between 4200mm and 8000mm or Extra Deep Channel for heights over 8000mm
- 5 Gyproc Sealant for optimum sound insulation
- 6 Gyproc jointing material bulk fill where gap exceeds 5mm
- 7 Indicative skirting
- 8 Gypframe GFS1 Fixing Strap progressively inserted between board layers to support outer layer horizontal board joints
- 9 Gypframe 'C' stud suitably fixed to wall at 600mm centres in two lines staggered by 300mm



Base and horizontal board joint

Wall abutment

Title: GypWall Twin Frame Audio
92 or 146mm 'C' studs with rigid brace and three layers board
Standard details read with project specification

Scale at A4: 1:5
Date: December 2021
Dwg No.: ST-127-Z1L3-01

Drawn: MBH
Approved: DRM
Revision:

Technical Support Team | british-gypsum.com

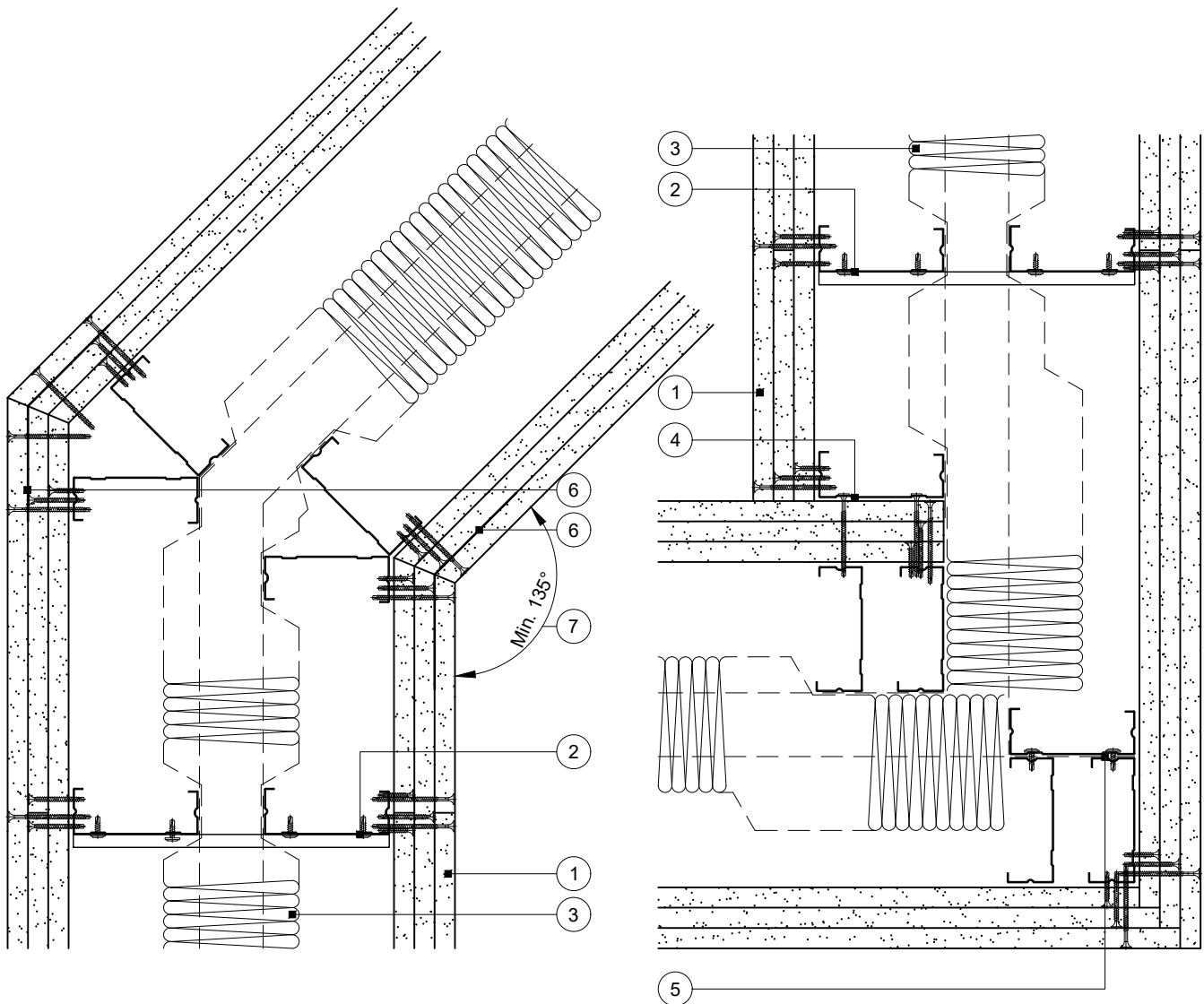
This drawing is provided to customers free of charge and the details shown are subject to the accuracy of the information provided to British Gypsum at the time the drawing was originally requested. The drawing should therefore be approved by the project design and management authority before use to ensure that it meets with their specific project requirements. It should also be read in conjunction with British Gypsum's current literature available at www.british-gypsum.com. Taping and finishing in accordance with British Gypsum's current recommendations is assumed (with the exception of FireCase system). Please note the drawing may show British Gypsum products fixed by or to products that are non-British Gypsum products/fixings please refer to Specifying Authority for specification details. This drawing is valid at the time of issue, please check with British Gypsum for the latest version. No duty of care is owed to the recipient or any third party and British Gypsum excludes all liability in respect of the details shown save where death or personal injury is caused due to British Gypsum's negligence or for fraud.

Standard Detail

This drawing provides general guidance where no performance criteria is given and site specific conditions are not taken into account

GypWall Twin Frame Audio

- 1 Three layers Gyproc plasterboard or Glasroc specialist board fixed with suitable British Gypsum screws at 300mm centres (200mm centres at external angles)
- 2 Two lines of Gypframe 'C' studs at specified centres cross braced with Gypframe 99 FC 50 Fixing Channel at 3600mm centres (staggered by 1800mm between stud pairs) fixed to each stud with four suitable British Gypsum wafer head screws
- 3 Isover insulation and/or stone mineral wool where required
- 4 Gypframe 'C' stud fixed through board to studs with suitable British Gypsum screws at 600mm centres in two lines staggered by 300mm
- 5 Gypframe 'C' studs fixed together with suitable British Gypsum wafer head screws at 600mm centres in two lines staggered by 300mm
- 6 Gypframe GA6 Splayed Angle to receive outer layer board fixings
- 7 Minimum angle ensures Gypframe GA6 Splayed Angle is fixed to studs at external angle



Splayed angle

Corner

Title: GypWall Twin Frame Audio
92 or 146mm 'C' studs with rigid brace and three layers board
Standard details read with project specification

Scale at A4: 1:5
Date: December 2021
Dwg No.: ST-127-Z1L3-02

Drawn: MBH
Approved: DRM
Revision:

Technical Support Team | british-gypsum.com

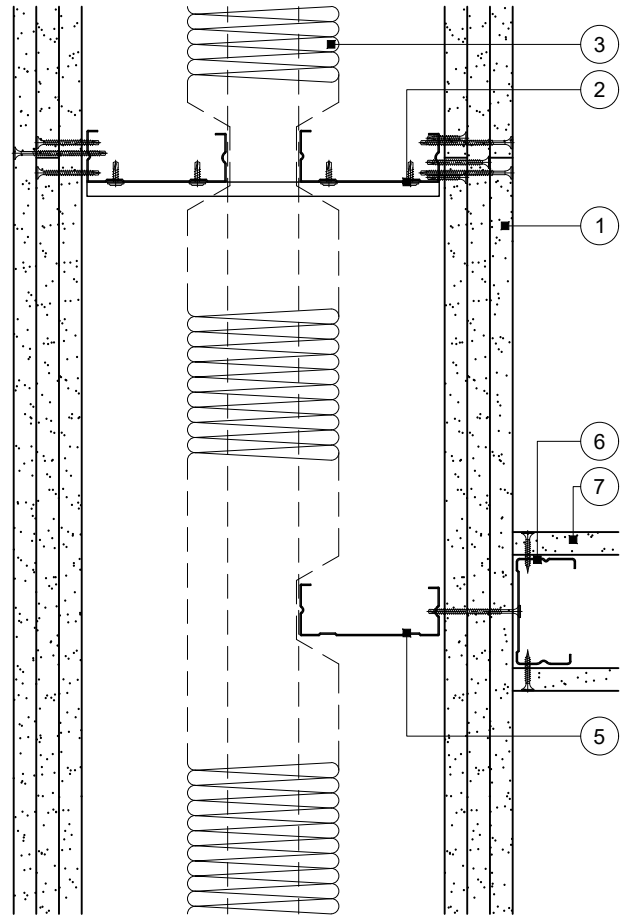
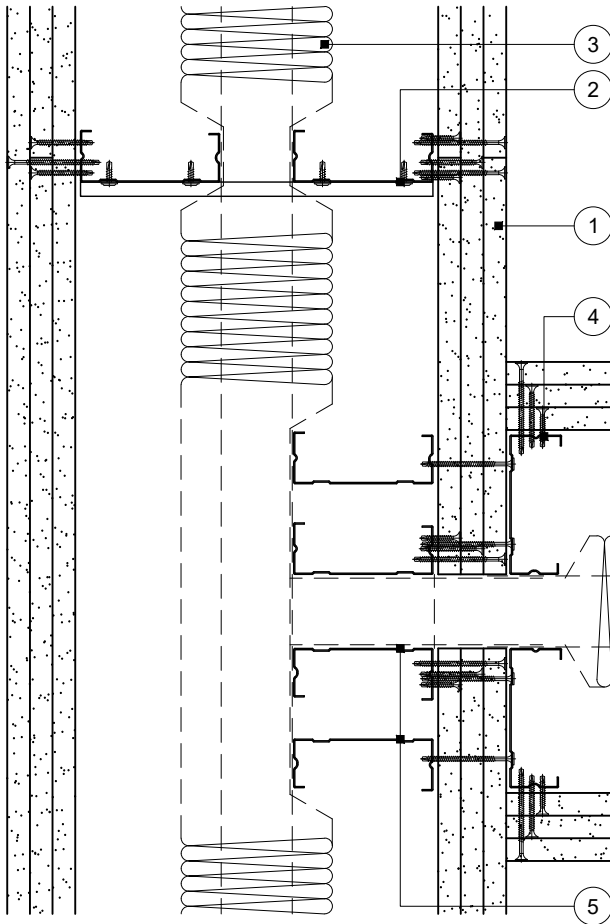
This drawing is provided to customers free of charge and the details shown are subject to the accuracy of the information provided to British Gypsum at the time the drawing was originally requested. The drawing should therefore be approved by the project design and management authority before use to ensure that it meets with their specific project requirements. It should also be read in conjunction with British Gypsum's current literature available at www.british-gypsum.com. Taping and finishing in accordance with British Gypsum's current recommendations is assumed (with the exception of FireCase system). Please note the drawing may show British Gypsum products fixed by or to products that are non-British Gypsum products/fixings please refer to Specifying Authority for specification details. This drawing is valid at the time of issue, please check with British Gypsum for the latest version. No duty of care is owed to the recipient or any third party and British Gypsum excludes all liability in respect of the details shown save where death or personal injury is caused due to British Gypsum's negligence or for fraud.

Standard Detail

This drawing provides general guidance where no performance criteria is given and site specific conditions are not taken into account

GypWall Twin Frame Audio

- 1 Three layers Gyproc plasterboard or Glasroc specialist board fixed with suitable British Gypsum screws at 300mm centres (200mm centres at external angles)
- 2 Two lines of Gypframe 'C' studs at specified centres cross braced with Gypframe 99 FC 50 Fixing Channel at 3600mm centres (staggered by 1800mm between stud pairs) fixed to each stud with four suitable British Gypsum wafer head screws
- 3 Isover insulation and/or stone mineral wool where required
- 4 Gypframe 'C' stud fixed through board to studs with suitable British Gypsum screws at 600mm centres in two lines staggered by 300mm
- 5 Additional Gypframe 'C' stud at junction (two for 92mm and 146mm studs in adjacent partition)
- 6 Gypframe 'C' stud fixed through board to stud(s) with suitable British Gypsum screws at 600mm centres (in two lines staggered by 300mm for 92mm and 146mm studs)
- 7 One layer Gyproc plasterboard or Glasroc specialist board fixed with suitable British Gypsum screws at 300mm centres (200mm centres at external angles)



T-junction

T-junction with other partition

Title: GypWall Twin Frame Audio
92 or 146mm 'C' studs with rigid brace and three layers board
Standard details read with project specification

Scale at A4: 1:5
Date: December 2021
Dwg No.: ST-127-Z1L3-03

Drawn: MBH
Approved: DRM
Revision:

Technical Support Team | british-gypsum.com

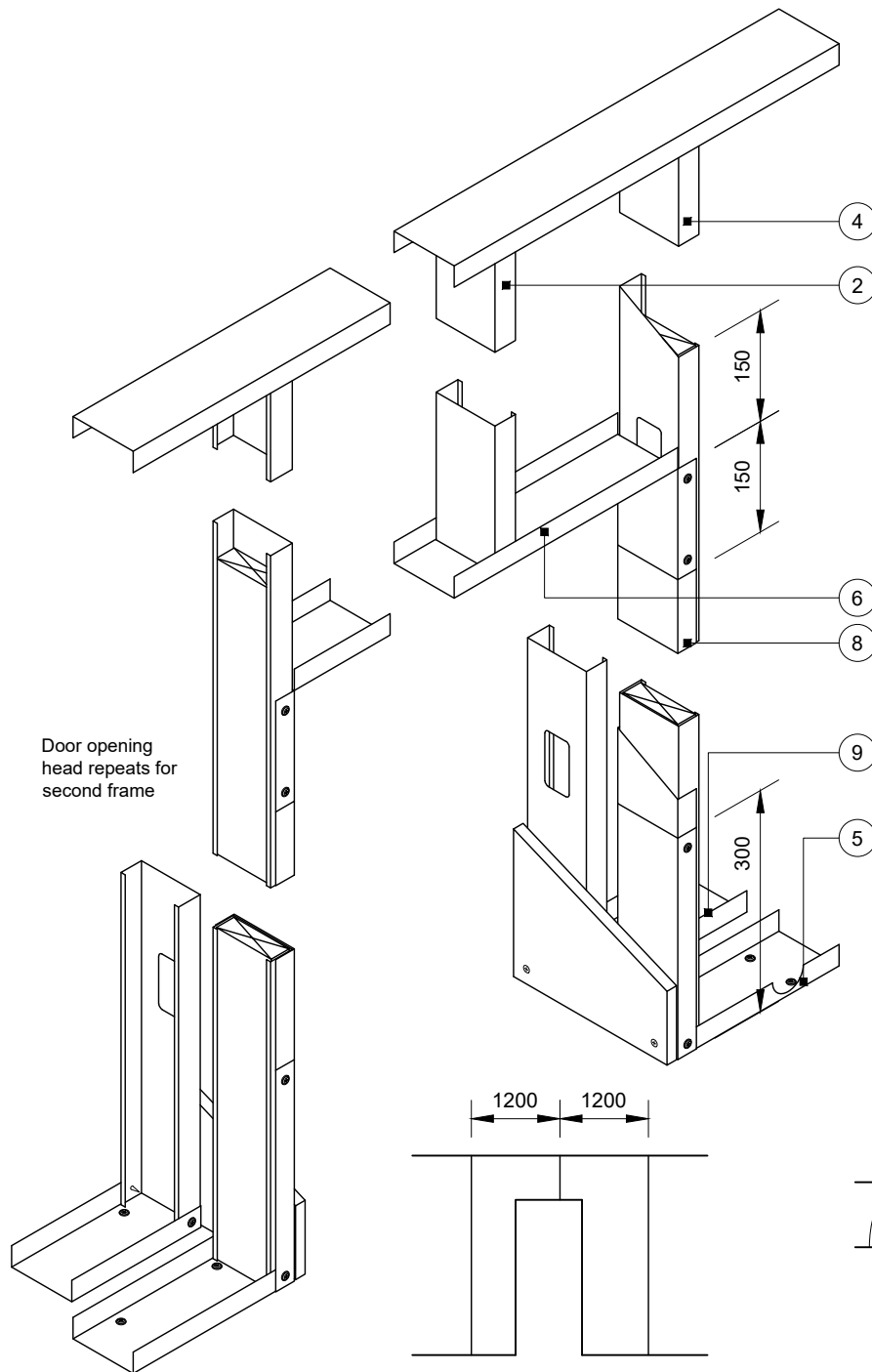
This drawing is provided to customers free of charge and the details shown are subject to the accuracy of the information provided to British Gypsum at the time the drawing was originally requested. The drawing should therefore be approved by the project design and management authority before use to ensure that it meets with their specific project requirements. It should also be read in conjunction with British Gypsum's current literature available at www.british-gypsum.com. Taping and finishing in accordance with British Gypsum's current recommendations is assumed (with the exception of FireCase system). Please note the drawing may show British Gypsum products fixed by or to products that are non-British Gypsum products/fixings please refer to Specifying Authority for specification details. This drawing is valid at the time of issue, please check with British Gypsum for the latest version. No duty of care is owed to the recipient or any third party and British Gypsum excludes all liability in respect of the details shown save where death or personal injury is caused due to British Gypsum's negligence or for fraud.

Standard Detail

This drawing provides general guidance where no performance criteria is given and site specific conditions are not taken into account

GypWall Twin Frame Audio

Advice should be sought from the door manufacturer or installer prior to construction of this detail

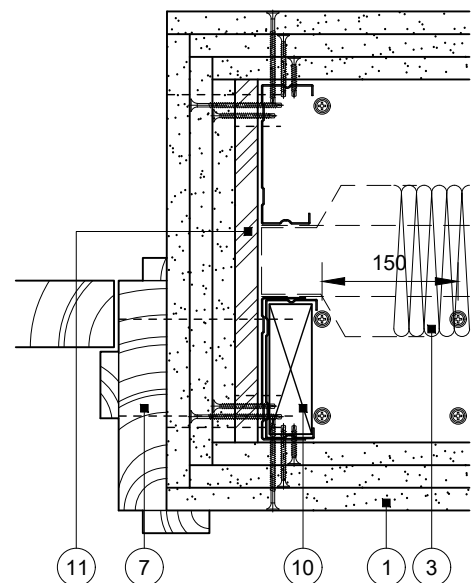


Partition elevation

Door opening width up to 1200mm

Maximum door weight 60kg to BS 5234: Parts 1 & 2: 1992 - Heavy and Severe Duty

- 1 Three layers Gyproc plasterboard or Glasroc specialist board fixed with suitable British Gypsum screws at 300mm centres (200mm centres at external angles)
- 2 Two lines of Gypframe 'C' studs at specified centres cross braced with Gypframe 99 FC 50 Fixing Channel at 3600mm centres (staggered by 1800mm between stud pairs) fixed to each stud with four suitable British Gypsum wafer head screws
- 3 Isover insulation and/or stone mineral wool where required
- 4 Two lines of Gypframe 'C' studs at jamb and cross braced above opening as note 2
- 5 Gypframe Channel suitably fixed to floor with two pairs of fixings at 150mm centres (four total) and at 600mm centres in two lines staggered by 300mm thereafter. Channel cut and bent to extend 300mm up stud and fixed through both flanges with two suitable British Gypsum wafer head screws. Deep Channel for heights between 4200mm and 8000mm or Extra Deep Channel for heights over 8000mm
- 6 Gypframe Channel cut and bent to extend 150mm down stud and fixed through both flanges with two suitable British Gypsum wafer head screws or crimped
- 7 Indicative timber door frame (fixed to timber stud) and architrave
- 8 Gypframe Channel sleeved over stud between returned channels at opening head and base
- 9 Gypframe Channel suitably fixed to floor at 600mm centres in two lines staggered by 300mm. Deep Channel for heights between 4200mm and 8000mm or Extra Deep Channel for heights over 8000mm
- 10 Indicative timber stud 86/140 x 30mm timber (to suit 92/146mm stud) to extend 150mm above opening height
- 11 15mm plywood to full opening height suitably fixed to studs at 300mm centres



Title: GypWall Twin Frame Audio
92 or 146mm 'C' studs with rigid brace and three layers board
Standard details read with project specification

Scale at A4: 1:5 1:10
Date: December 2021
Dwg No.: ST-127-Z1L3-04

Drawn: MBH
Approved: DRM
Revision:

Technical Support Team | british-gypsum.com

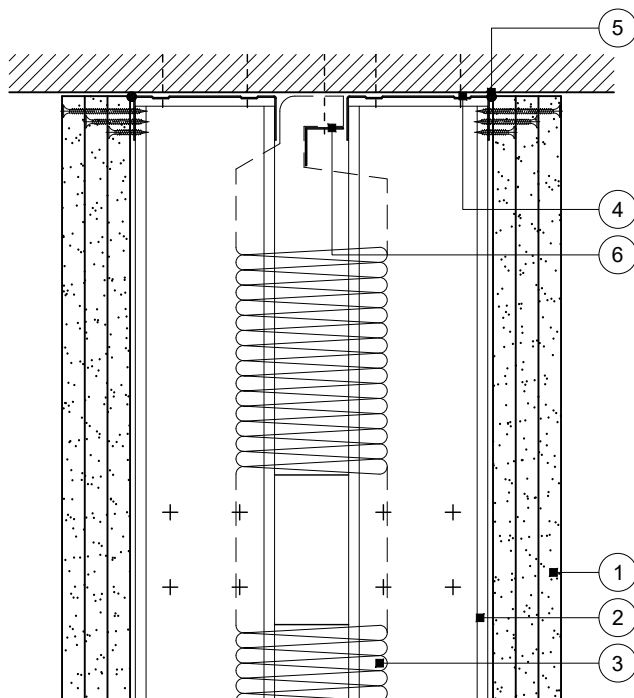
This drawing is provided to customers free of charge and the details shown are subject to the accuracy of the information provided to British Gypsum at the time the drawing was originally requested. The drawing should therefore be approved by the project design and management authority before use to ensure that it meets with their specific project requirements. It should also be read in conjunction with British Gypsum's current literature available at www.british-gypsum.com. Taping and finishing in accordance with British Gypsum's current recommendations is assumed (with the exception of FireCase system). Please note the drawing may show British Gypsum products fixed by or to products that are non-British Gypsum products/fixings please refer to Specifying Authority for specification details. This drawing is valid at the time of issue, please check with British Gypsum for the latest version. No duty of care is owed to the recipient or any third party and British Gypsum excludes all liability in respect of the details shown save where death or personal injury is caused due to British Gypsum's negligence or for fraud.

Standard Detail

This drawing provides general guidance where no performance criteria is given and site specific conditions are not taken into account

GypWall Twin Frame Audio

- 1 Three layers Gyproc plasterboard or Glasroc specialist board fixed with suitable British Gypsum screws at 300mm centres (200mm centres at external angles)
- 2 Two lines of Gypframe 'C' studs at specified centres cross braced with Gypframe 99 FC 50 Fixing Channel at 3600mm centres (staggered by 1800mm between stud pairs) fixed to each stud with four suitable British Gypsum wafer head screws
- 3 Isover insulation and/or stone mineral wool where required
- 4 Gypframe Channel suitably fixed to soffit at 600mm centres in two lines staggered by 300mm. Deep Channel for heights between 4200mm and 8000mm or Extra Deep Channel for heights over 8000mm
- 5 Gyproc Sealant for optimum sound insulation
- 6 Gypframe steel angle or timber batten suitably fixed to soffit to retain insulation where required



Head

No deflection allowance

Title: GypWall Twin Frame Audio
92 or 146mm 'C' studs with rigid brace and three layers board
Standard details read with project specification

Scale at A4: 1:5
Date: December 2021
Dwg No.: ST-127-Z1L3-05

Drawn: MBH
Approved: DRM
Revision:

Technical Support Team | british-gypsum.com

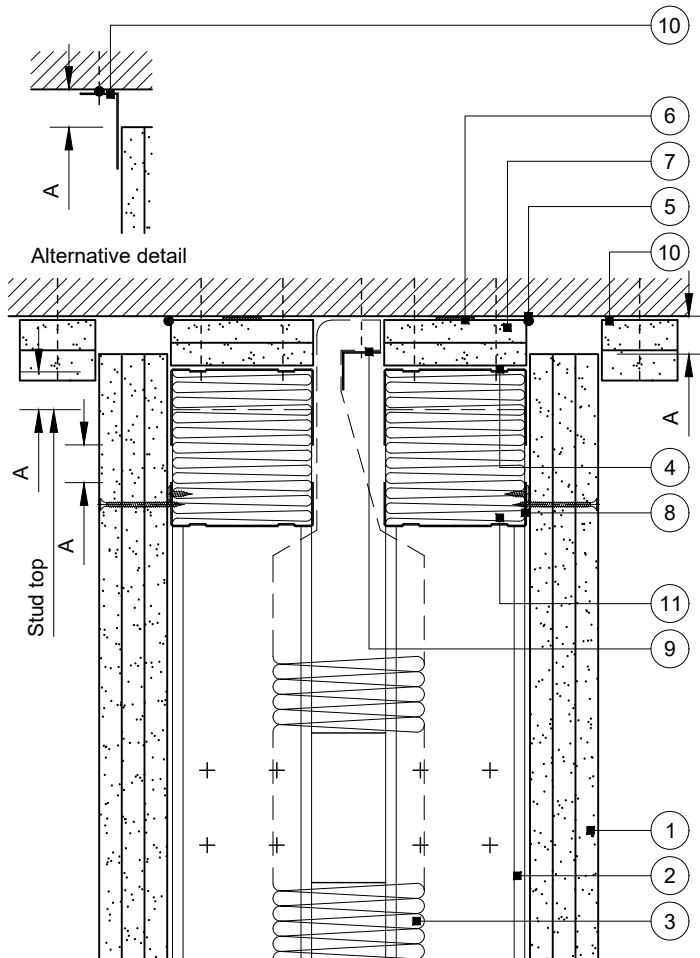
This drawing is provided to customers free of charge and the details shown are subject to the accuracy of the information provided to British Gypsum at the time the drawing was originally requested. The drawing should therefore be approved by the project design and management authority before use to ensure that it meets with their specific project requirements. It should also be read in conjunction with British Gypsum's current literature available at www.british-gypsum.com. Taping and finishing in accordance with British Gypsum's current recommendations is assumed (with the exception of FireCase system). Please note the drawing may show British Gypsum products fixed by or to products that are non-British Gypsum products/fixings please refer to Specifying Authority for specification details. This drawing is valid at the time of issue, please check with British Gypsum for the latest version. No duty of care is owed to the recipient or any third party and British Gypsum excludes all liability in respect of the details shown save where death or personal injury is caused due to British Gypsum's negligence or for fraud.

Standard Detail

This drawing provides general guidance where no performance criteria is given and site specific conditions are not taken into account

GypWall Twin Frame Audio

- 1 Three layers Gyproc plasterboard or Glasroc specialist board fixed with suitable British Gypsum screws at 300mm centres (200mm centres at external angles)
- 2 Two lines of Gypframe 'C' studs at specified centres cross braced with Gypframe 99 FC 50 Fixing Channel at 3600mm centres (staggered by 1800mm between stud pairs) fixed to each stud with four suitable British Gypsum wafer head screws
- 3 Isover insulation and/or stone mineral wool where required
- 4 Gypframe Deep Channel or Extra Deep Channel (see table) suitably fixed through board to soffit at 600mm centres in two lines staggered by 300mm
- 5 Gyproc Sealant for optimum sound insulation
- 6 Gyproc FireStrip
- 7 One or two channel width strip(s) of board (see table). Two strips pre-fixed to channel with suitable British Gypsum screws at 600mm centres
- 8 Gypframe Channel noggings with ends notched around studs and fixed with suitable British Gypsum wafer head screws, to receive uppermost board fixings (no fixings into head channel)
- 9 Gypframe steel angle or timber batten suitably fixed to soffit to retain insulation where required
- 10 Two 50mm width strips of Glasroc F FireCase fixed to soffit with suitable fire resistant fixings at 600mm centres, or Gypframe GA4 Steel Angle bedded on bead of Gyproc Sealant and fixed to soffit with suitable fire resistant fixings at 600mm centres (see table)
- 11 Stone mineral wool 33kg/m³ minimum density by others



DEFLECTION (VERTICAL) HEAD DESIGN

DEFLECTION DIM. A	DROPPED SOFFIT NOTE 7	CHANNEL NOTE 4	CLOAKING ELEMENT NOTE 10
1-15mm	One 19mm ^A or 20mm ^B	DC	Two 15mm ^B or GA4
16-20mm	Two 15mm ^B	DC	Two 15mm ^B
21-25mm	Two 15mm ^B	DC	Two 20mm ^B
26-30mm	Two 20mm ^B	DC	Two 20mm ^B
31-35mm	Two 20mm ^B	EDC	Two 25mm ^B
36-40mm	Two 25mm ^B	EDC	Two 25mm ^B
41-45mm	Two 25mm ^B	EDC	Two 30mm ^B
46-50mm	Two 30mm ^B	EDC	Two 30mm ^B

^A Gyproc CoreBoard
^B Glasroc F FireCase

Important information

Fire resistance BS EN 1364-1

- 90 or 120 minutes through partition subject to specification

Deflection head

Downward (vertical) movement

Rev. A 01.08.22 Annotation update (MBH)

Title: GypWall Twin Frame Audio
92 or 146mm 'C' studs with rigid brace and three layers board
Standard details read with project specification

Scale at A4: 1:5
Date: December 2021
Dwg No.: ST-127-Z1L3-09

Drawn: MBH
Approved: DRM
Revision: A

Technical Support Team | british-gypsum.com

This drawing is provided to customers free of charge and the details shown are subject to the accuracy of the information provided to British Gypsum at the time the drawing was originally requested. The drawing should therefore be approved by the project design and management authority before use to ensure that it meets with their specific project requirements. It should also be read in conjunction with British Gypsum's current literature available at www.british-gypsum.com. Taping and finishing in accordance with British Gypsum's current recommendations is assumed (with the exception of FireCase system). Please note the drawing may show British Gypsum products fixed by or to products that are non-British Gypsum products/fixings please refer to Specifying Authority for specification details. This drawing is valid at the time of issue, please check with British Gypsum for the latest version. No duty of care is owed to the recipient or any third party and British Gypsum excludes all liability in respect of the details shown save where death or personal injury is caused due to British Gypsum's negligence or for fraud.