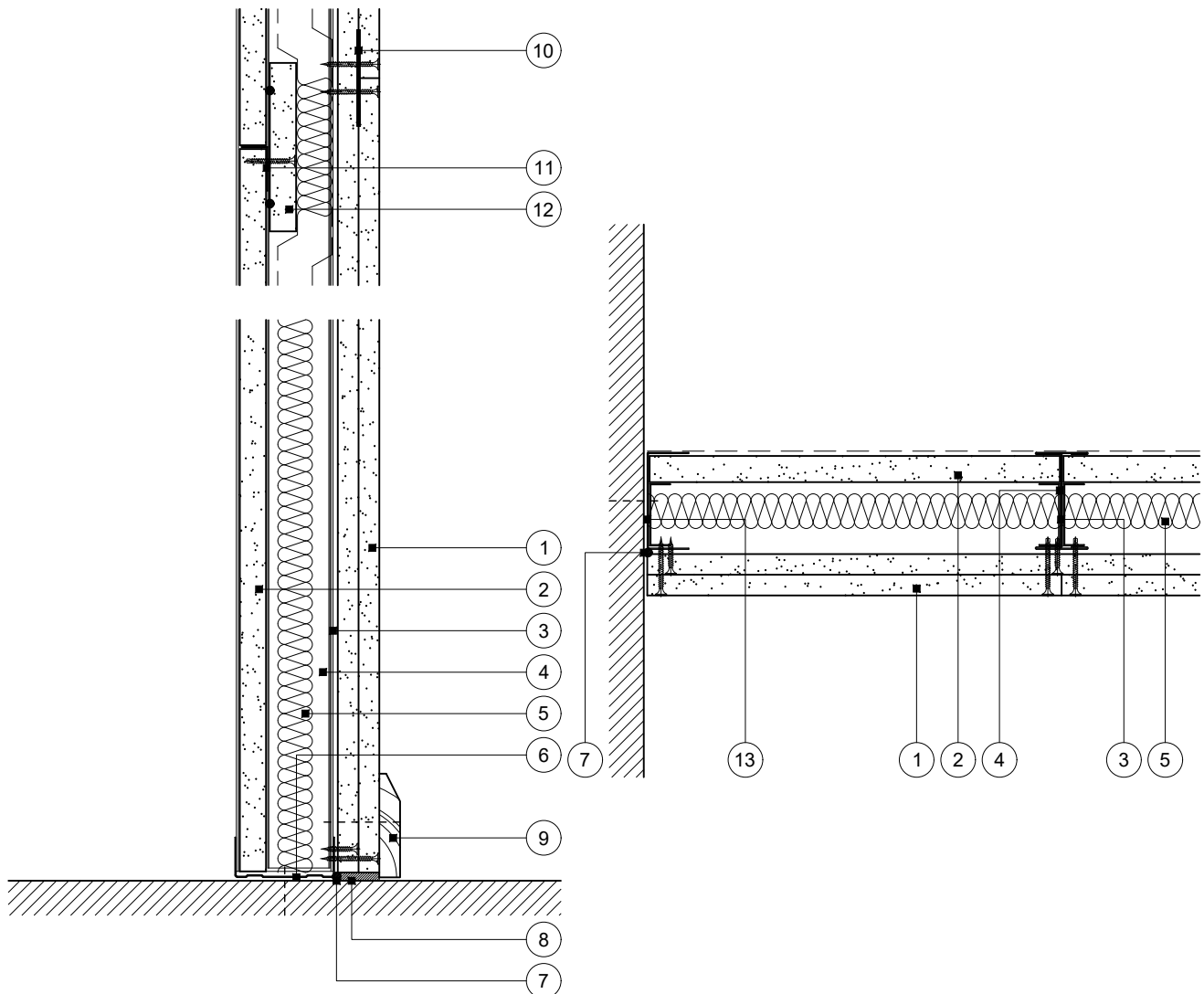


Standard Detail

This drawing provides general guidance where no performance criteria is given and site specific conditions are not taken into account

GypWall Shaft

- 1 Two layers Gyproc plasterboard or Glasroc specialist board fixed with suitable British Gypsum screws at 300mm centres (200mm centres at external angles)
- 2 19mm Gyproc CoreBoard or 20mm Glasroc F FireCase
- 3 Gypframe 'I' studs (tabbed 'I' studs for 146mm) at specified centres
- 4 Gypframe Retaining Channel
- 5 Isover insulation where required
- 6 Gypframe Channel suitably fixed to floor at 600mm centres (in two lines staggered by 300mm for 94mm and 148mm channels). Gypframe Deep Channel used for heights between 4200mm and 8000mm
- 7 Gyproc Sealant for optimum sound insulation
- 8 Gyproc jointing material bulk fill where gap exceeds 5mm
- 9 Indicative skirting
- 10 Gypframe GFS1 Fixing Strap progressively inserted between board layers to support outer layer horizontal board joints
- 11 Gypframe GA3 Steel Angle at horizontal joint and secured by retaining channel at each end
- 12 122mm high strip of 19mm Gyproc CoreBoard or 20mm Glasroc F FireCase bedded on two beads of Gyproc Sealant and fixed to angle with three suitable British Gypsum screws
- 13 Gypframe Starter Channel (Tabbed Starter Channel for 146mm) suitably fixed to wall at 600mm centres (in two lines staggered by 300mm for 92mm and 146mm starter channels)



Base and horizontal board joint

Wall abutment

Title: GypWall Shaft
'I' studs and two layers board
Standard details read with project specification

Scale at A4: 1:5
Date: October 2021
Dwg No.: ST-129-Z2L2-01

Drawn: MRC
Approved: DRM
Revision:

Technical Support Team | british-gypsum.com

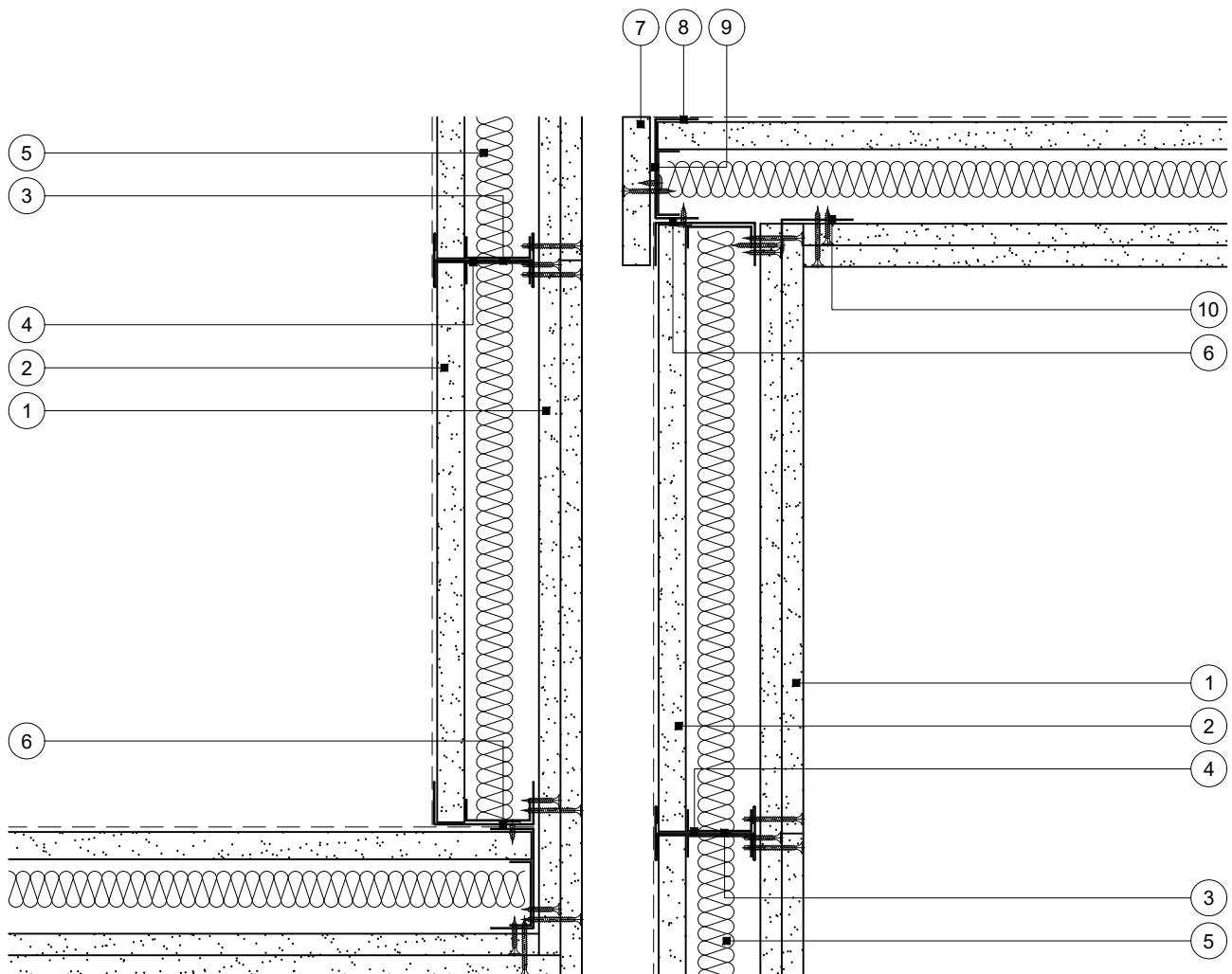
This drawing is provided to customers free of charge and the details shown are subject to the accuracy of the information provided to British Gypsum at the time the drawing was originally requested. The drawing should therefore be approved by the project design and management authority before use to ensure that it meets with their specific project requirements. It should also be read in conjunction with British Gypsum's current literature available at www.british-gypsum.com. Taping and finishing in accordance with British Gypsum's current recommendations is assumed (with the exception of FireCase system). Please note the drawing may show British Gypsum products/fixings please refer to Specifying Authority for specification details. This drawing is valid at the time of issue, please check with British Gypsum for the latest version. No duty of care is owed to the recipient or any third party and British Gypsum excludes all liability in respect of the details shown save where death or personal injury is caused due to British Gypsum's negligence or for fraud.

Standard Detail

This drawing provides general guidance where no performance criteria is given and site specific conditions are not taken into account

GypWall Shaft

- 1 Two layers Gyproc plasterboard or Glasroc specialist board fixed with suitable British Gypsum screws at 300mm centres (200mm centres at external angles)
- 2 19mm Gyproc CoreBoard or 20mm Glasroc F FireCase
- 3 Gypframe 'I' studs (tabbed 'I' studs for 146mm) at specified centres
- 4 Gypframe Retaining Channel
- 5 Isover insulation where required
- 6 Gypframe Starter Channels (Tabbed Starter Channel for 146mm) fixed together with suitable British Gypsum wafer head screws at 600mm centres
- 7 92/102/124/178mm width (for 60/70/92/146mm studs) strip of 19mm Gyproc CoreBoard or 20mm Glasroc F FireCase (full height minus deflection amount) pre-fixed to starter channel with suitable British Gypsum screws at 600mm centres
- 8 Starter channel crimped to floor channel to facilitate construction (ensure crimp folds outwards)
- 9 Nominal 590mm (290mm for 92mm stud) lengths of Gypframe Retaining Channel inserted between screws and fixed to starter channel with two suitable British Gypsum wafer head screws. Retaining channel continuous for 146mm stud
- 10 Gypframe GA4 Steel Angle fixed to starter channel with suitable British Gypsum screws at 600mm centres



External corner

Internal corner

Title: GypWall Shaft
'I' studs and two layers board
Standard details read with project specification

Scale at A4: 1:5
Date: October 2021
Dwg No.: ST-129-Z2L2-02

Drawn: MRC
Approved: DRM
Revision:

Technical Support Team | british-gypsum.com

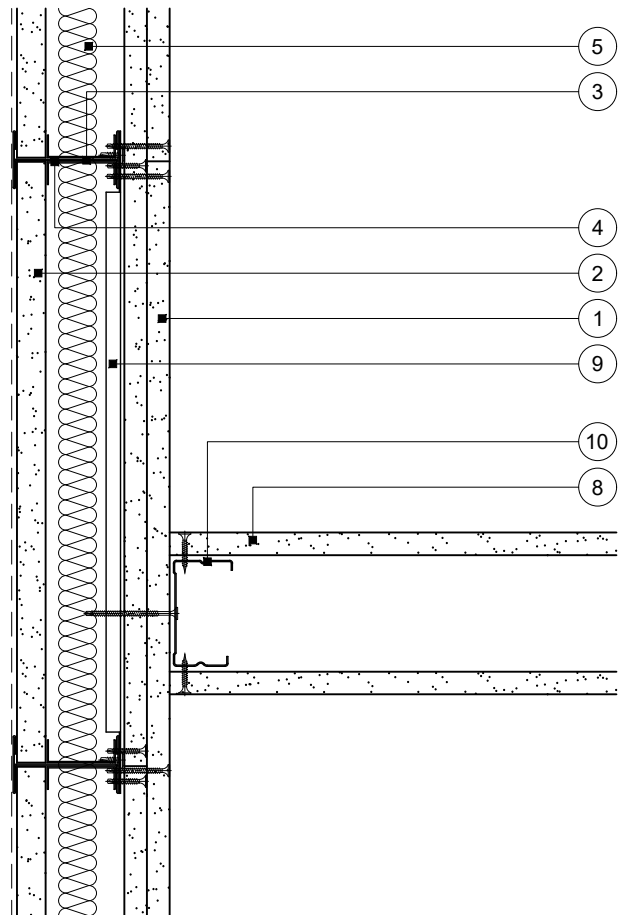
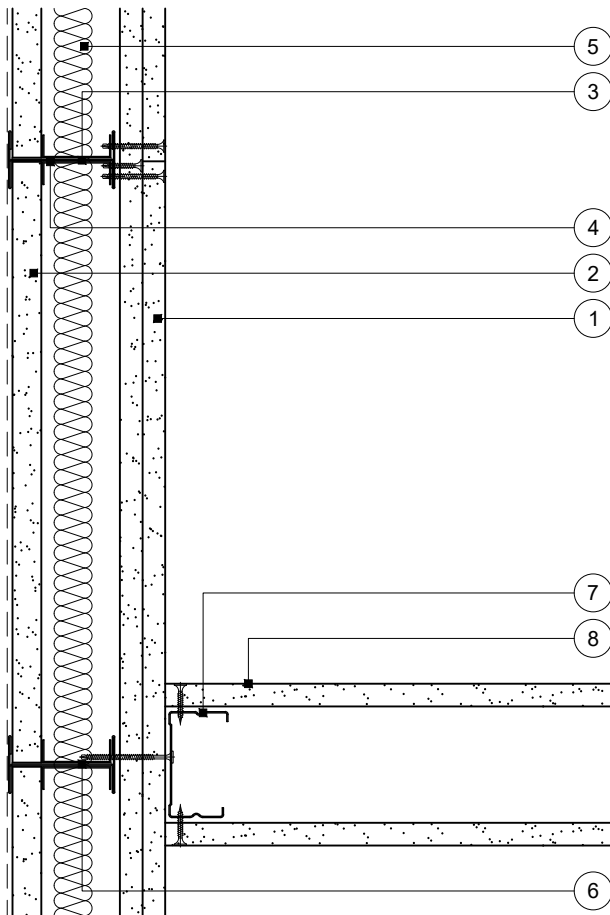
This drawing is provided to customers free of charge and the details shown are subject to the accuracy of the information provided to British Gypsum at the time the drawing was originally requested. The drawing should therefore be approved by the project design and management authority before use to ensure that it meets with their specific project requirements. It should also be read in conjunction with British Gypsum's current literature available at www.british-gypsum.com. Taping and finishing in accordance with British Gypsum's current recommendations is assumed (with the exception of FireCase system). Please note the drawing may show British Gypsum products fixed by or to products that are non-British Gypsum products/fixings please refer to Specifying Authority for specification details. This drawing is valid at the time of issue, please check with British Gypsum for the latest version. No duty of care is owed to the recipient or any third party and British Gypsum excludes all liability in respect of the details shown save where death or personal injury is caused due to British Gypsum's negligence or for fraud.

Standard Detail

This drawing provides general guidance where no performance criteria is given and site specific conditions are not taken into account

GypWall Shaft

- 1 Two layers Gyproc plasterboard or Glasroc specialist board fixed with suitable British Gypsum screws at 300mm centres (200mm centres at external angles)
- 2 19mm Gyproc CoreBoard or 20mm Glasroc F FireCase
- 3 Gypframe 'I' studs (tabbed 'I' studs for 146mm) at specified centres
- 4 Gypframe Retaining Channel
- 5 Isover insulation where required
- 6 Additional Gypframe 'I' stud (146mm tabbed 'I' stud) at junction (two for 92mm and 146mm studs in adjacent partition)
- 7 Gypframe 'C' stud fixed through board to stud(s) with suitable British Gypsum screws at 600mm centres (in two lines staggered by 300mm for 92mm and 146mm studs)
- 8 One layer Gyproc plasterboard or Glasroc specialist board fixed with suitable British Gypsum screws at 300mm centres (200mm centres at external angles)
- 9 Horizontal Gypframe 99 FC 50 Fixing Channel at 600mm centres with ends snipped, flattened and fixed to stud with two suitable British Gypsum wafer head screws
- 10 Gypframe 'C' stud fixed through board to fixing channel with suitable British Gypsum screws at 600mm centres (in two lines for 92mm and 146mm studs)



T-junction with other partition

On stud

T-junction with other partition

Between studs

Title: GypWall Shaft
'I' studs and two layers board
Standard details read with project specification

Scale at A4: 1:5
Date: October 2021
Dwg No.: ST-129-Z2L2-03

Drawn: MRC
Approved: DRM
Revision:

Technical Support Team | british-gypsum.com

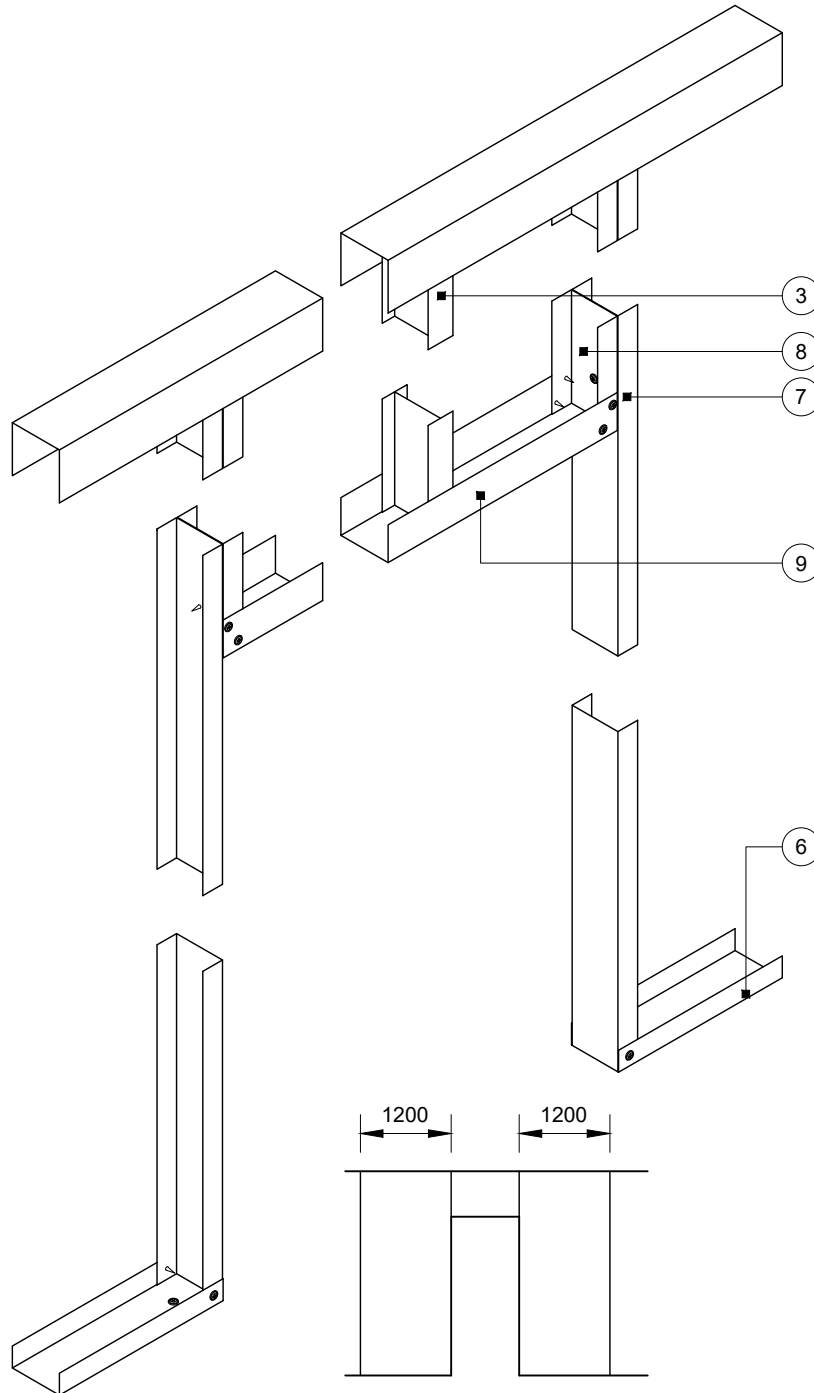
This drawing is provided to customers free of charge and the details shown are subject to the accuracy of the information provided to British Gypsum at the time the drawing was originally requested. The drawing should therefore be approved by the project design and management authority before use to ensure that it meets with their specific project requirements. It should also be read in conjunction with British Gypsum's current literature available at www.british-gypsum.com. Taping and finishing in accordance with British Gypsum's current recommendations is assumed (with the exception of FireCase system). Please note the drawing may show British Gypsum products fixed by or to products that are non-British Gypsum products/fixings please refer to Specifying Authority for specification details. This drawing is valid at the time of issue, please check with British Gypsum for the latest version. No duty of care is owed to the recipient or any third party and British Gypsum excludes all liability in respect of the details shown save where death or personal injury is caused due to British Gypsum's negligence or for fraud.

Standard Detail

This drawing provides general guidance where no performance criteria is given and site specific conditions are not taken into account

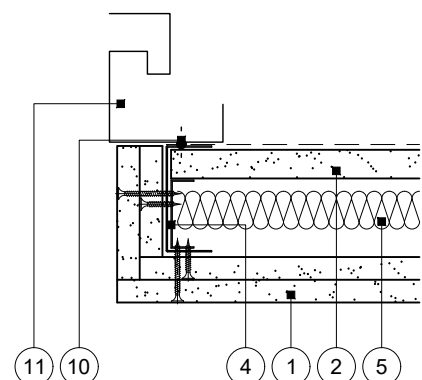
GypWall Shaft

Advice should be sought from the door manufacturer or installer prior to construction of this detail



Partition elevation

- 1 Two layers Gyproc plasterboard or Glasroc specialist board fixed with suitable British Gypsum screws at 300mm centres (200mm centres at external angles)
- 2 19mm Gyproc CoreBoard or 20mm Glasroc F FireCase
- 3 Gypframe 'I' studs (tabbed 'I' studs for 146mm) at specified centres
- 4 Gypframe Retaining Channel
- 5 Isover insulation where required
- 6 Gypframe Channel suitably fixed to floor at 600mm centres (in two lines staggered by 300mm for 94mm and 148mm channels). Gypframe Deep Channel used for heights between 4200mm and 8000mm.
- 7 Gypframe Starter Channel (Tabbed Starter Channel for 146mm) mechanically fixed to lift door frame at 300mm centres
- 8 Gypframe Starter Channel (Tabbed Starter Channel for 146mm) fixed to starter channel with suitable British Gypsum wafer head Screws at 600mm centres (in two lines staggered by 300mm for 94mm and 148mm channels)
- 9 Gypframe Deep Channel or Extra Deep Channel ('J' Channel for 62mm) fixed to starter channel through both flanges with two suitable British Gypsum wafer head screws
- 10 Gyproc Sealant
- 11 Indicative lift door frame



Lift door opening width up to 1200mm

Title: GypWall Shaft
'I' studs and two layers board
Standard details read with project specification

Scale at A4: 1:5 1:10
Date: October 2021
Dwg No.: ST-129-Z2L2-04

Drawn: MRC
Approved: DRM
Revision:

Technical Support Team | british-gypsum.com

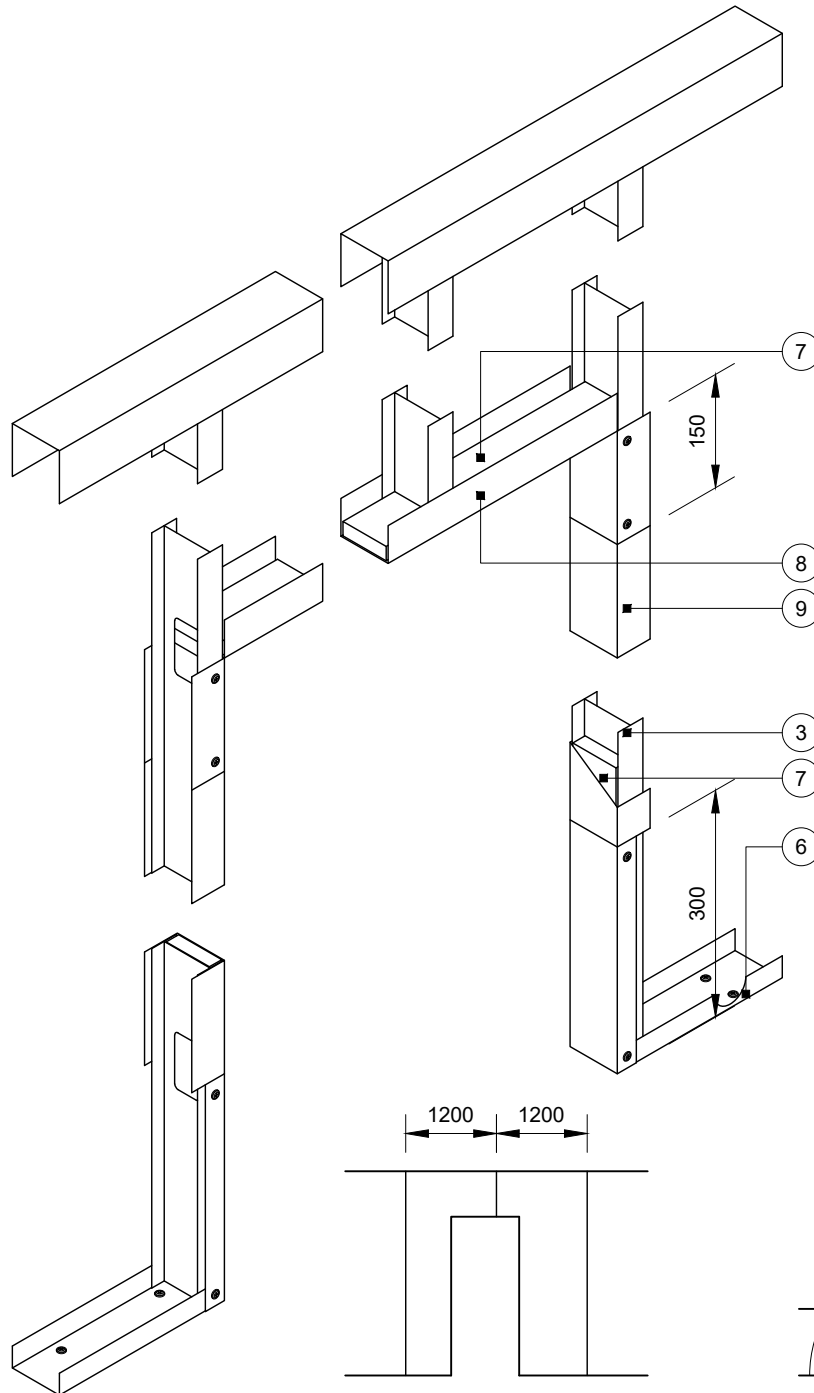
This drawing is provided to customers free of charge and the details shown are subject to the accuracy of the information provided to British Gypsum at the time the drawing was originally requested. The drawing should therefore be approved by the project design and management authority before use to ensure that it meets with their specific project requirements. It should also be read in conjunction with British Gypsum's current literature available at www.british-gypsum.com. Taping and finishing in accordance with British Gypsum's current recommendations is assumed (with the exception of FireCase system). Please note the drawing may show British Gypsum products fixed by or to products that are non-British Gypsum products/fixings please refer to Specifying Authority for specification details. This drawing is valid at the time of issue, please check with British Gypsum for the latest version. No duty of care is owed to the recipient or any third party and British Gypsum excludes all liability in respect of the details shown save where death or personal injury is caused due to British Gypsum's negligence or for fraud.

Standard Detail

This drawing provides general guidance where no performance criteria is given and site specific conditions are not taken into account

GypWall Shaft

Advice should be sought from the door manufacturer or installer prior to construction of this detail

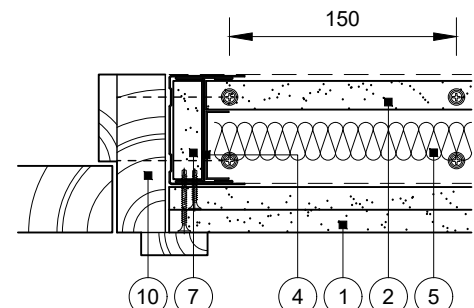


Partition elevation

Door opening width up to 1200mm

Maximum door weight 60kg to BS 5234: Parts 1 & 2: 1992 - Heavy and Severe Duty

- 1 Two layers Gyproc plasterboard or Glasroc specialist board fixed with suitable British Gypsum screws at 300mm centres (200mm centres at external angles)
- 2 19mm Gyproc CoreBoard or 20mm Glasroc F FireCase
- 3 Gypframe 'I' studs (tabbed 'I' studs for 146mm) at specified centres
- 4 Gypframe Retaining Channel
- 5 Isover insulation where required
- 6 Gypframe Channel suitably fixed to floor with two pairs of fixings at 150mm centres (four total) and at 600mm centres (in two lines staggered by 300mm for 94mm and 148mm channels) thereafter. Channel cut and bent to extend 300mm up stud and fixed through both flanges with two suitable British Gypsum wafer head screws. Deep Channel for heights between 4200mm and 8000mm
- 7 19mm Gyproc CoreBoard or 20mm Glasroc F FireCase packer full opening height and opening width between studs
- 8 Gypframe Deep Channel or Extra Deep Channel ('J' Channel for 62mm) cut and bent to extend 150mm down stud and fixed through both flanges with two suitable British Gypsum wafer head screws
- 9 Gypframe Deep Channel or Extra Deep Channel ('J' Channel for 62mm) fixed to 'I' stud through both flanges with two suitable British Gypsum wafer head screws
- 10 Indicative timber door frame suitably fixed through channel to stud



Rev. A 01.02.23 Updated annotation (MBH)

Title: GypWall Shaft
'I' studs and two layers board
Standard details read with project specification

Scale at A4: 1:5 1:10
Date: July 2021
Dwg No.: ST-129-Z2L2-05

Drawn: MRC
Approved: DRM
Revision: A

Technical Support Team | british-gypsum.com

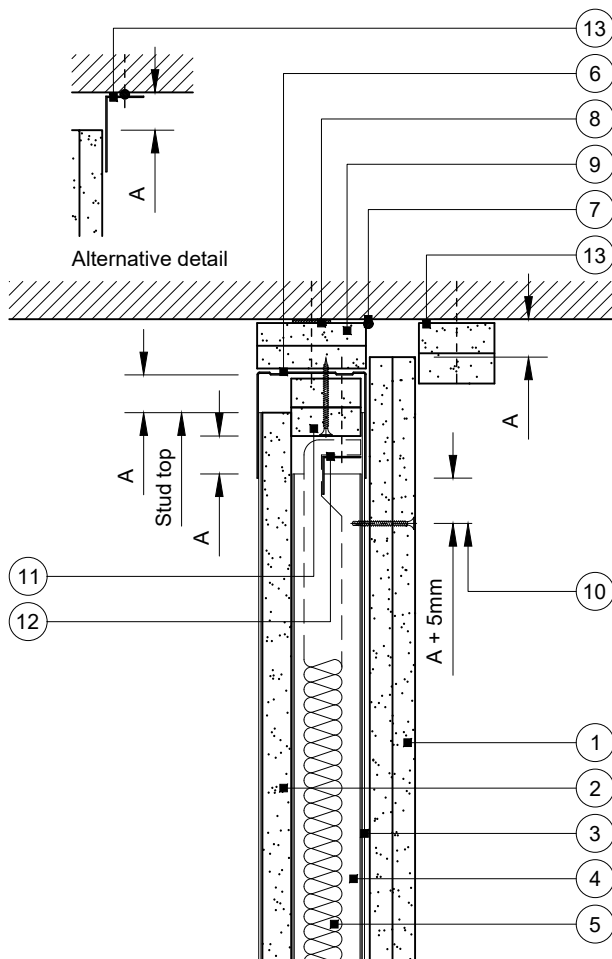
This drawing is provided to customers free of charge and the details shown are subject to the accuracy of the information provided to British Gypsum at the time the drawing was originally requested. The drawing should therefore be approved by the project design and management authority before use to ensure that it meets with their specific project requirements. It should also be read in conjunction with British Gypsum's current literature available at www.british-gypsum.com. Taping and finishing in accordance with British Gypsum's current recommendations is assumed (with the exception of FireCase system). Please note the drawing may show British Gypsum products fixed by or to products that are non-British Gypsum products/fixings please refer to Specifying Authority for specification details. This drawing is valid at the time of issue, please check with British Gypsum for the latest version. No duty of care is owed to the recipient or any third party and British Gypsum excludes all liability in respect of the details shown save where death or personal injury is caused due to British Gypsum's negligence or for fraud.

Standard Detail

This drawing provides general guidance where no performance criteria is given and site specific conditions are not taken into account

GypWall Shaft

- Two layers Gyproc plasterboard or Glasroc specialist board fixed with suitable British Gypsum screws at 300mm centres (200mm centres at external angles)
- 19mm Gyproc CoreBoard or 20mm Glasroc F FireCase
- Gypframe 'I' studs (tabbed 'I' studs for 146mm) at specified centres
- Gypframe Retaining Channel
- Isover insulation where required
- Gypframe Extra Deep Channel ('J' Channel for 62mm) suitably fixed through board to soffit at 300mm centres (at 600mm centres in two lines staggered by 300mm for 94mm and 148mm channels)
- Gyproc Sealant for optimum sound insulation
- Gyproc FireStrip
- One or two channel width strip(s) of board (see table). Two strips pre-fixed to channel from underside with suitable British Gypsum screws at 600mm centres
- Uppermost board fixing to studs
- Two or three firestops (see table) 36/46/68/122mm width (to suit 60/70/92/146mm studs) cut from 19mm Gyproc CoreBoard or 20mm Glasroc F FireCase, installed between studs and fixed to channel with two suitable British Gypsum screws
- Gypframe steel angle or timber batten suitably fixed to channel to retain insulation where required
- Two 50mm width strips of Glasroc F FireCase fixed to soffit with suitable fire resistant fixings at 600mm centres, or Gypframe GA4 Steel Angle bedded on bead of Gyproc Sealant and fixed to soffit with suitable fire resistant fixings at 600mm centres (see table)



DEFLECTION (VERTICAL) HEAD DESIGN

| DEFLECTION DIM. A | DROPPED SOFFIT NOTE 9 | FIRESTOP NOTE 11 | CLOAKING ELEMENT NOTE 13 |
|----------------------|--|------------------|---------------------------|
| 1-15mm | One 19mm ^A or 20mm ^B | Two | Optional GA4 ^C |
| 16-20mm | Two 15mm ^B | Two | Two 15mm ^B |
| 21-25mm | Two 15mm ^B | Two | Two 20mm ^B |
| 26-30mm | Two 20mm ^B | Two | Two 20mm ^B |
| 31-35mm ^D | Two 20mm ^B | Three | Two 25mm ^B |
| 36-40mm ^D | Two 25mm ^B | Three | Two 25mm ^B |
| 41-45mm ^D | Two 25mm ^B | Three | Two 30mm ^B |
| 46-50mm ^D | Two 30mm ^B | Three | Two 30mm ^B |

^A Gyproc CoreBoard

^B Glasroc F FireCase

^C For optimum sound insulation

^D Maximum 30mm for 'J' Channel

Important information

Fire resistance BS EN 1364-1

- 90 minutes through partition subject to specification

Deflection head

Downward (vertical) movement

Rev. A 01.08.22 Annotation update (AJC)

Title: GypWall Shaft
'I' studs and two layers board
Standard details read with project specification

Scale at A4: 1:5
Date: October 2021
Dwg No.: ST-129-Z2L2-08

Drawn: MRC
Approved: DRM
Revision: A

Technical Support Team | british-gypsum.com

This drawing is provided to customers free of charge and the details shown are subject to the accuracy of the information provided to British Gypsum at the time the drawing was originally requested. The drawing should therefore be approved by the project design and management authority before use to ensure that it meets with their specific project requirements. It should also be read in conjunction with British Gypsum's current literature available at www.british-gypsum.com. Taping and finishing in accordance with British Gypsum's current recommendations is assumed (with the exception of FireCase system). Please note the drawing may show British Gypsum products fixed by or to products that are non-British Gypsum products/fixings please refer to Specifying Authority for specification details. This drawing is valid at the time of issue, please check with British Gypsum for the latest version. No duty of care is owed to the recipient or any third party and British Gypsum excludes all liability in respect of the details shown save where death or personal injury is caused due to British Gypsum's negligence or for fraud.