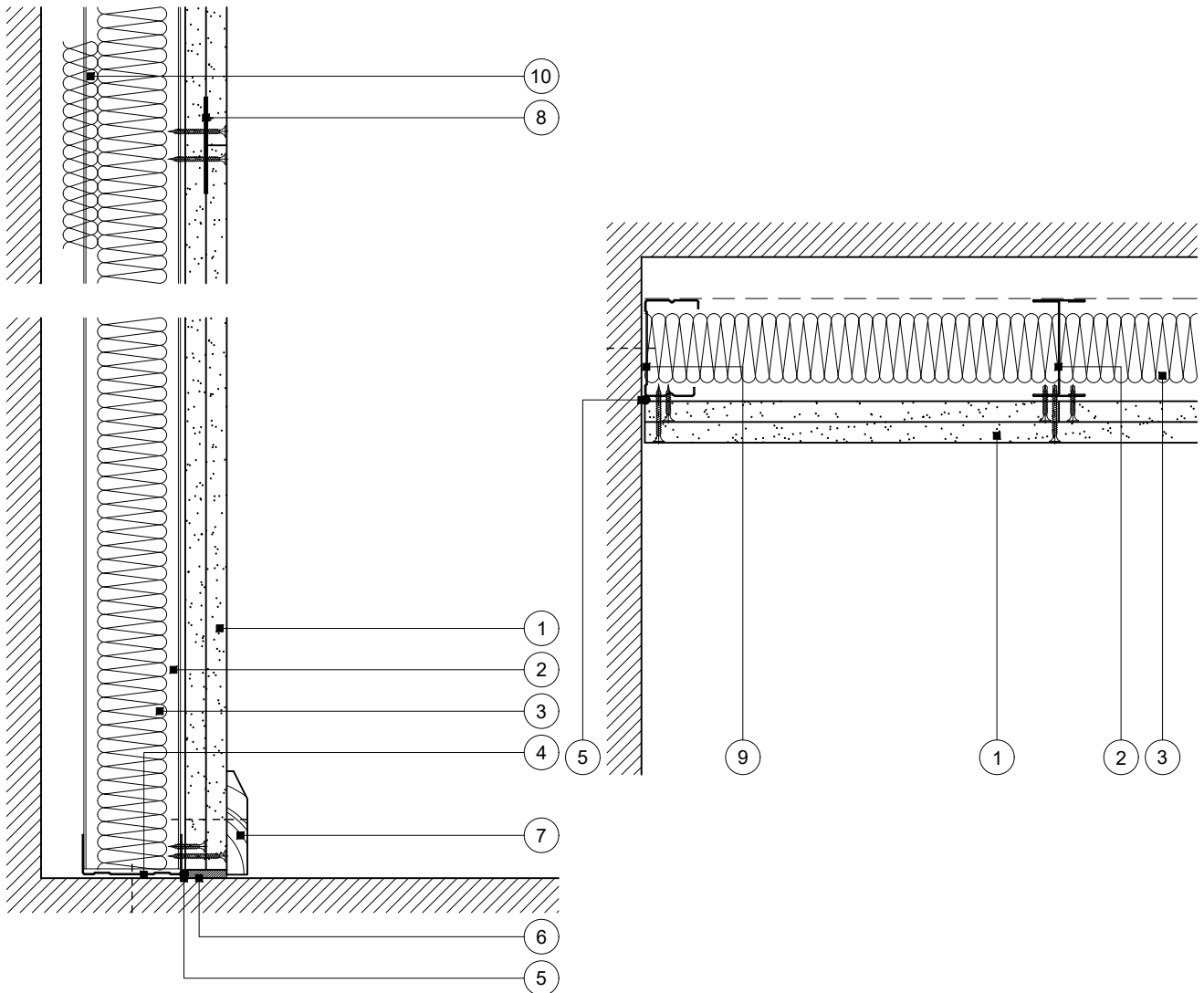


Standard Detail

This drawing provides general guidance where no performance criteria is given and site specific conditions are not taken into account

GypLyner Independent

- 1 Two layers Gyproc plasterboard or Glasroc specialist board fixed with suitable British Gypsum screws at 300mm centres (200mm centres at external angles)
- 2 Gypframe 'I' studs at specified centres
- 3 Isover insulation where required
- 4 Gypframe Channel suitably fixed to floor at 600mm centres (in two lines staggered by 300mm for 94mm and 148mm channels). Deep Channel for heights between 4200mm and 8000mm or Extra Deep Channel for heights over 8000mm
- 5 Gyproc Sealant for optimum sound insulation
- 6 Gyproc jointing material bulk fill where gap exceeds 5mm
- 7 Indicative skirting
- 8 Gypframe GFS1 Fixing Strap progressively inserted between board layers to support outer layer horizontal board joints
- 9 Gypframe 'C' stud suitably fixed to wall at 600mm centres (in two lines staggered by 300mm for 92mm and 146mm studs)
- 10 50 and 75mm batts retained between 92mm and 146mm studs with 150mm high strips of batt at joints



Base and horizontal board joint

Wall abutment

Title: GypLyner Independent
'I' studs and two layers board
Standard details read with project specification

Scale at A4: 1:5
Date: October 2021
Dwg No.: ST-224-Z2L2-01

Drawn: MRC
Approved: NCL
Revision:

Technical Support Team | british-gypsum.com

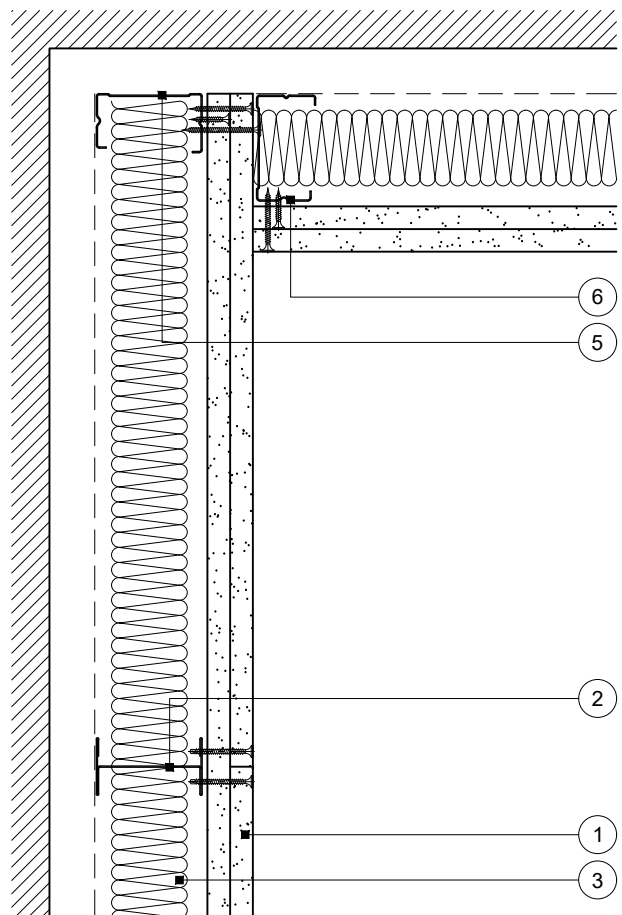
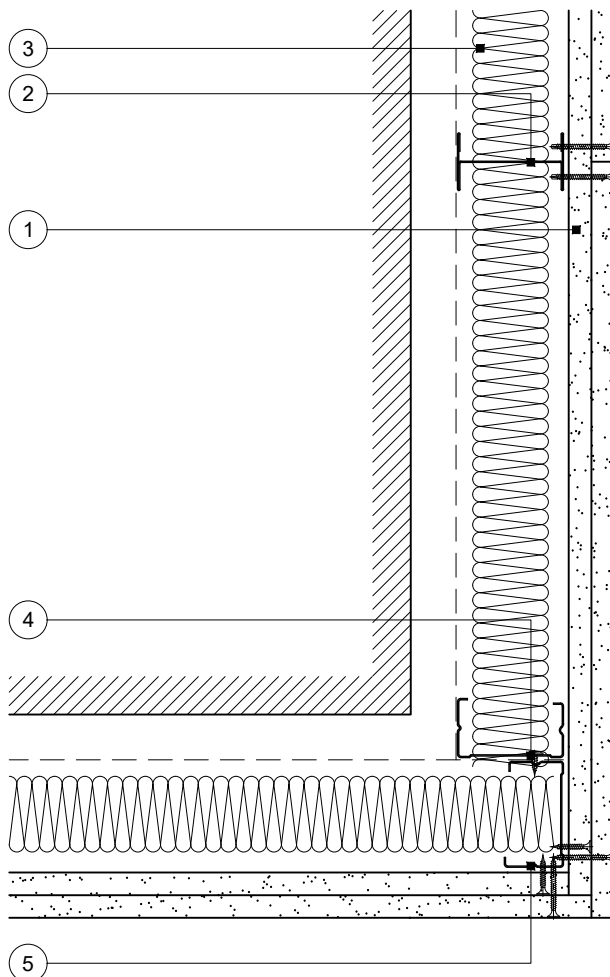
This drawing is provided to customers free of charge and the details shown are subject to the accuracy of the information provided to British Gypsum at the time the drawing was originally requested. The drawing should therefore be approved by the project design and management authority before use to ensure that it meets with their specific project requirements. It should also be read in conjunction with British Gypsum's current literature available at www.british-gypsum.com. Taping and finishing in accordance with British Gypsum's current recommendations is assumed (with the exception of FireCase system). Please note the drawing may show British Gypsum products fixed by or to products that are non-British Gypsum products/fixings please refer to Specifying Authority for specification details. This drawing is valid at the time of issue, please check with British Gypsum for the latest version. No duty of care is owed to the recipient or any third party and British Gypsum excludes all liability in respect of the details shown save where death or personal injury is caused due to British Gypsum's negligence or for fraud.

Standard Detail

This drawing provides general guidance where no performance criteria is given and site specific conditions are not taken into account

GypLyner Independent

- 1 Two layers Gyproc plasterboard or Glasroc specialist board fixed with suitable British Gypsum screws at 300mm centres (200mm centres at external angles)
- 2 Gypframe 'I' studs at specified centres
- 3 Isover insulation where required
- 4 Gypframe 'C' studs fixed together with suitable British Gypsum wafer head screws at 600mm centres (in two lines staggered by 300mm for 92mm and 146mm studs)
- 5 Gypframe 'C' stud at junction (two for 92mm and 146mm studs)
- 6 Gypframe 'C' stud fixed through board to stud(s) with suitable British Gypsum screws at 600mm centres (in two lines staggered by 300mm for 92mm and 146mm studs)



External corner

Internal corner

Title: GypLyner Independent
'I' studs and two layers board
Standard details read with project specification

Scale at A4: 1:5
Date: October 2021
Dwg No.: ST-224-Z2L2-02

Drawn: MRC
Approved: NCL
Revision:

Technical Support Team | british-gypsum.com

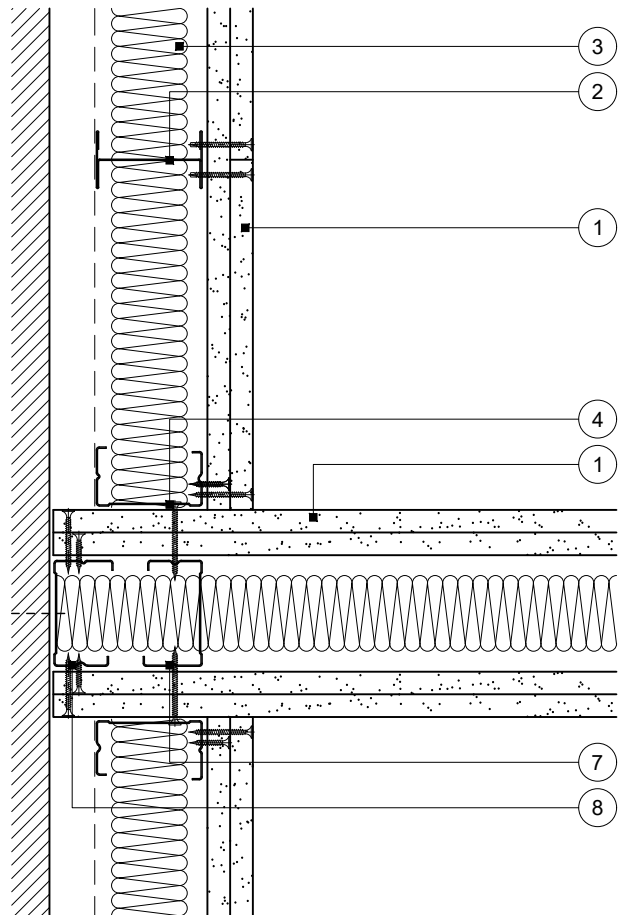
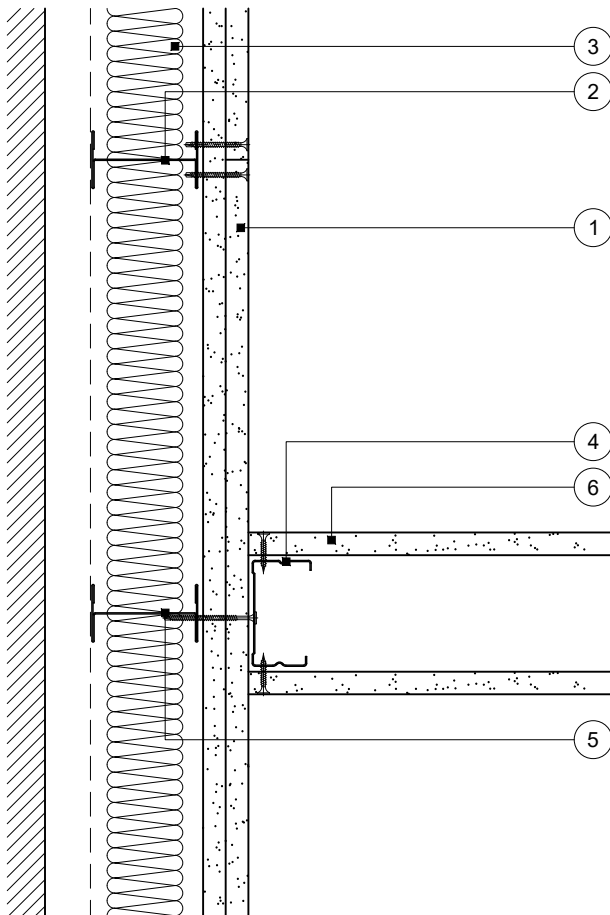
This drawing is provided to customers free of charge and the details shown are subject to the accuracy of the information provided to British Gypsum at the time the drawing was originally requested. The drawing should therefore be approved by the project design and management authority before use to ensure that it meets with their specific project requirements. It should also be read in conjunction with British Gypsum's current literature available at www.british-gypsum.com. Taping and finishing in accordance with British Gypsum's current recommendations is assumed (with the exception of FireCase system). Please note the drawing may show British Gypsum products fixed by or to products that are non-British Gypsum products/fixings please refer to Specifying Authority for specification details. This drawing is valid at the time of issue, please check with British Gypsum for the latest version. No duty of care is owed to the recipient or any third party and British Gypsum excludes all liability in respect of the details shown save where death or personal injury is caused due to British Gypsum's negligence or for fraud.

Standard Detail

This drawing provides general guidance where no performance criteria is given and site specific conditions are not taken into account

GypLyner Independent

- 1 Two layers Gyproc plasterboard or Glasroc specialist board fixed with suitable British Gypsum screws at 300mm centres (200mm centres at external angles)
- 2 Gypframe 'I' studs at specified centres
- 3 Isover insulation where required
- 4 Gypframe 'C' stud fixed through board to stud(s) with suitable British Gypsum screws at 600mm centres (in two lines staggered by 300mm for 92mm and 146mm studs)
- 5 Additional Gypframe 'I' stud at junction (two for 92mm and 146mm studs in partition)
- 6 One layer Gyproc plasterboard or Glasroc specialist board fixed with suitable British Gypsum screws at 300mm centres (200mm centres at external angles)
- 7 Additional Gypframe 'C' stud at junction (two for 92mm and 146mm studs in wall lining)
- 8 Gypframe 'C' stud suitably fixed to wall at 600mm centres (in two lines staggered by 300mm for 92mm and 146mm studs)



Junction with partition

Junction with partition

Optimum acoustic performance and reduced flanking transmission

Title: GypLyner Independent
'I' studs and two layers board
Standard details read with project specification

Scale at A4: 1:5
Date: October 2021
Dwg No.: ST-224-Z2L2-03

Drawn: MRC
Approved: NCL
Revision:

Technical Support Team | british-gypsum.com

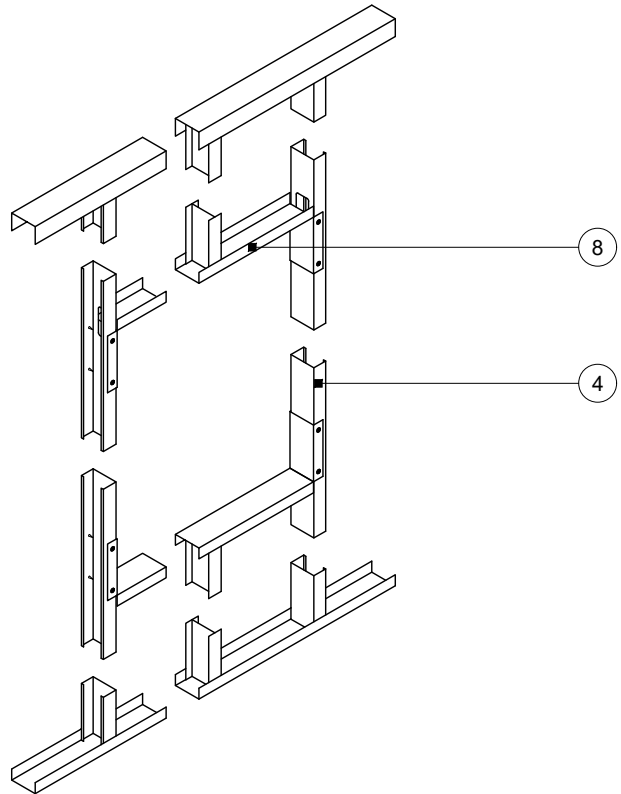
This drawing is provided to customers free of charge and the details shown are subject to the accuracy of the information provided to British Gypsum at the time the drawing was originally requested. The drawing should therefore be approved by the project design and management authority before use to ensure that it meets with their specific project requirements. It should also be read in conjunction with British Gypsum's current literature available at www.british-gypsum.com. Taping and finishing in accordance with British Gypsum's current recommendations is assumed (with the exception of FireCase system). Please note the drawing may show British Gypsum products fixed by or to products that are non-British Gypsum products/fixings please refer to Specifying Authority for specification details. This drawing is valid at the time of issue, please check with British Gypsum for the latest version. No duty of care is owed to the recipient or any third party and British Gypsum excludes all liability in respect of the details shown save where death or personal injury is caused due to British Gypsum's negligence or for fraud.

Standard Detail

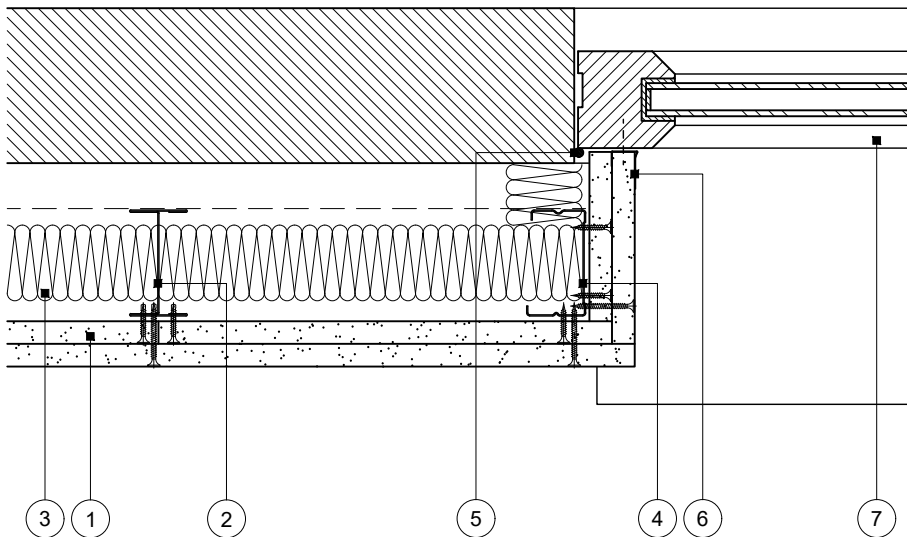
This drawing provides general guidance where no performance criteria is given and site specific conditions are not taken into account

GypLyner Independent

- 1 Two layers Gyproc plasterboard or Glasroc specialist board fixed with suitable British Gypsum screws at 300mm centres (200mm centres at external angles)
- 2 Gypframe 'I' studs at specified centres
- 3 Isover insulation where required
- 4 Gypframe 'C' stud
- 5 Gyproc Sealant for optimum sound insulation
- 6 Gyproc Drywall Metal Edge Bead fixed at 600mm centres
- 7 Indicative window frame
- 8 Gypframe Channel cut and bent to extend 150mm down stud and fixed through both flanges with two suitable British Gypsum wafer head screws



Opening width up to 1200mm



Window reveal

Principles apply to door reveal

Title: GypLyner Independent
'I' studs and two layers board
Standard details read with project specification

Scale at A4: 1:5
Date: October 2021
Dwg No.: ST-224-Z2L2-04

Drawn: MRC
Approved: NCL
Revision:

Technical Support Team | british-gypsum.com

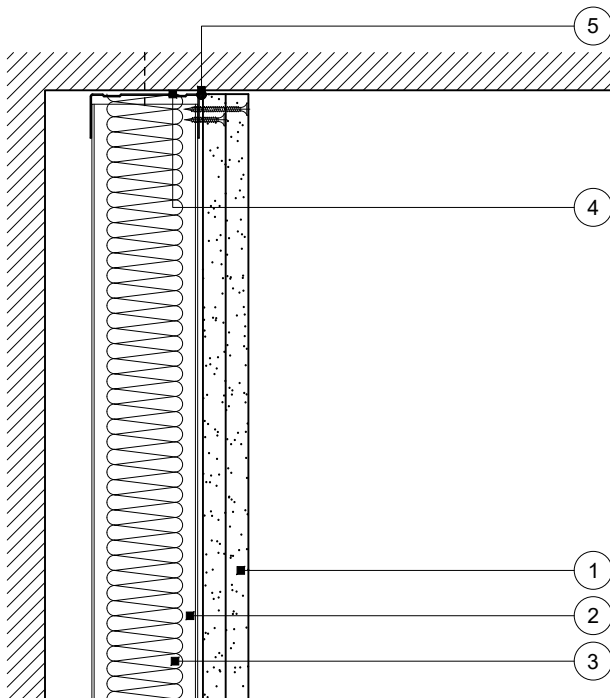
This drawing is provided to customers free of charge and the details shown are subject to the accuracy of the information provided to British Gypsum at the time the drawing was originally requested. The drawing should therefore be approved by the project design and management authority before use to ensure that it meets with their specific project requirements. It should also be read in conjunction with British Gypsum's current literature available at www.british-gypsum.com. Taping and finishing in accordance with British Gypsum's current recommendations is assumed (with the exception of FireCase system). Please note the drawing may show British Gypsum products fixed by or to products that are non-British Gypsum products/fixings please refer to Specifying Authority for specification details. This drawing is valid at the time of issue, please check with British Gypsum for the latest version. No duty of care is owed to the recipient or any third party and British Gypsum excludes all liability in respect of the details shown save where death or personal injury is caused due to British Gypsum's negligence or for fraud.

Standard Detail

This drawing provides general guidance where no performance criteria is given and site specific conditions are not taken into account

GypLyner Independent

- 1 Two layers Gyproc plasterboard or Glasroc specialist board fixed with suitable British Gypsum screws at 300mm centres (200mm centres at external angles)
- 2 Gypframe 'I' studs at specified centres
- 3 Isover insulation where required
- 4 Gypframe Channel suitably fixed to soffit at 600mm centres (in two lines staggered by 300mm for 94mm and 148mm channels). Deep Channel for heights between 4200mm and 8000mm or Extra Deep Channel for heights over 8000mm
- 5 Gyproc Sealant for optimum sound insulation



Head

No deflection allowance

Title: GypLyner Independent
'I' studs and two layers board
Standard details read with project specification

Scale at A4: 1:5
Date: October 2021
Dwg No.: ST-224-Z2L2-05

Drawn: MRC
Approved: NCL
Revision:

Technical Support Team | british-gypsum.com

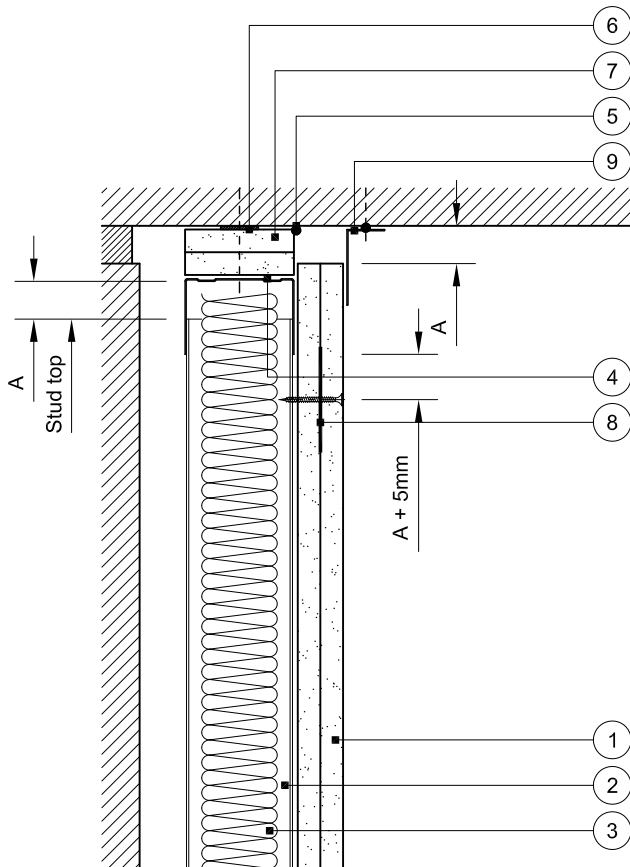
This drawing is provided to customers free of charge and the details shown are subject to the accuracy of the information provided to British Gypsum at the time the drawing was originally requested. The drawing should therefore be approved by the project design and management authority before use to ensure that it meets with their specific project requirements. It should also be read in conjunction with British Gypsum's current literature available at www.british-gypsum.com. Taping and finishing in accordance with British Gypsum's current recommendations is assumed (with the exception of FireCase system). Please note the drawing may show British Gypsum products fixed by or to products that are non-British Gypsum products/fixings please refer to Specifying Authority for specification details. This drawing is valid at the time of issue, please check with British Gypsum for the latest version. No duty of care is owed to the recipient or any third party and British Gypsum excludes all liability in respect of the details shown save where death or personal injury is caused due to British Gypsum's negligence or for fraud.

Standard Detail

This drawing provides general guidance where no performance criteria is given and site specific conditions are not taken into account

GypLyner Independent

- Two layers Gyproc plasterboard or Glasroc specialist board fixed with suitable British Gypsum screws at 300mm centres (200mm centres at external angles)
- Gypframe 'I' studs at specified centres
- Isover insulation where required
- Gypframe Deep Channel or Extra Deep Channel (see table) suitably fixed through board to soffit at 600mm centres (in two lines staggered by 300mm for 94mm and 148mm channels)
- Gyproc Sealant for optimum sound insulation
- Gyproc FireStrip for fire rated applications (see important information)
- One or two channel width strip(s) of board (see table). Two strips pre-fixed to channel with suitable British Gypsum screws at 600mm centres
- Gypframe GFS1 Fixing Strap fixed through board to studs with suitable British Gypsum screws at 1200mm centres to receive uppermost board fixings (no fixings into head channel)
- Optional cloaking angle for optimum sound insulation, if required by specifier or acoustic consultant. Gypframe GA4 or GA7 Steel Angle (see table) bedded on bead of Gyproc Sealant and suitably fixed to soffit at 600mm centres



DEFLECTION (VERTICAL) HEAD DESIGN

DEFLECTION DIM. A	DROPPED SOFFIT NOTE 7	CHANNEL NOTE 4	CLOAKING ELEMENT NOTE 10
1-15mm	One 19mm ^A or 20mm ^B	DC	GA4
16-25mm	Two 15mm ^B	DC	GA4
26-30mm	Two 20mm ^B	DC	GA4
31-35mm	Two 20mm ^B	EDC	GA4
36-40mm	Two 25mm ^B	EDC	GA4
41-45mm	Two 25mm ^B	EDC	GA7
46-50mm	Two 30mm ^B	EDC	GA7

^A Gyproc CoreBoard

^B Glasroc F FireCase



Important information

Non-fire rated

An estimated fire performance could be claimed subject to GypLyner Independent specification. Refer to British Gypsum Technical Support Team for guidance

Deflection head

Downward (vertical) movement

Rev. B 18.01.23 GA7 added (DRM)

Title: GypLyner Independent
'I' studs and two layers board
Standard details read with project specification

Scale at A4: 1:5
Date: October 2021
Dwg No.: ST-224-Z2L2-06

Drawn: MRC
Approved: NCL
Revision: B

Technical Support Team | british-gypsum.com

This drawing is provided to customers free of charge and the details shown are subject to the accuracy of the information provided to British Gypsum at the time the drawing was originally requested. The drawing should therefore be approved by the project design and management authority before use to ensure that it meets with their specific project requirements. It should also be read in conjunction with British Gypsum's current literature available at www.british-gypsum.com. Taping and finishing in accordance with British Gypsum's current recommendations is assumed (with the exception of FireCase system). Please note the drawing may show British Gypsum products fixed by or to products that are non-British Gypsum products/fixings please refer to Specifying Authority for specification details. This drawing is valid at the time of issue, please check with British Gypsum for the latest version. No duty of care is owed to the recipient or any third party and British Gypsum excludes all liability in respect of the details shown save where death or personal injury is caused due to British Gypsum's negligence or for fraud.