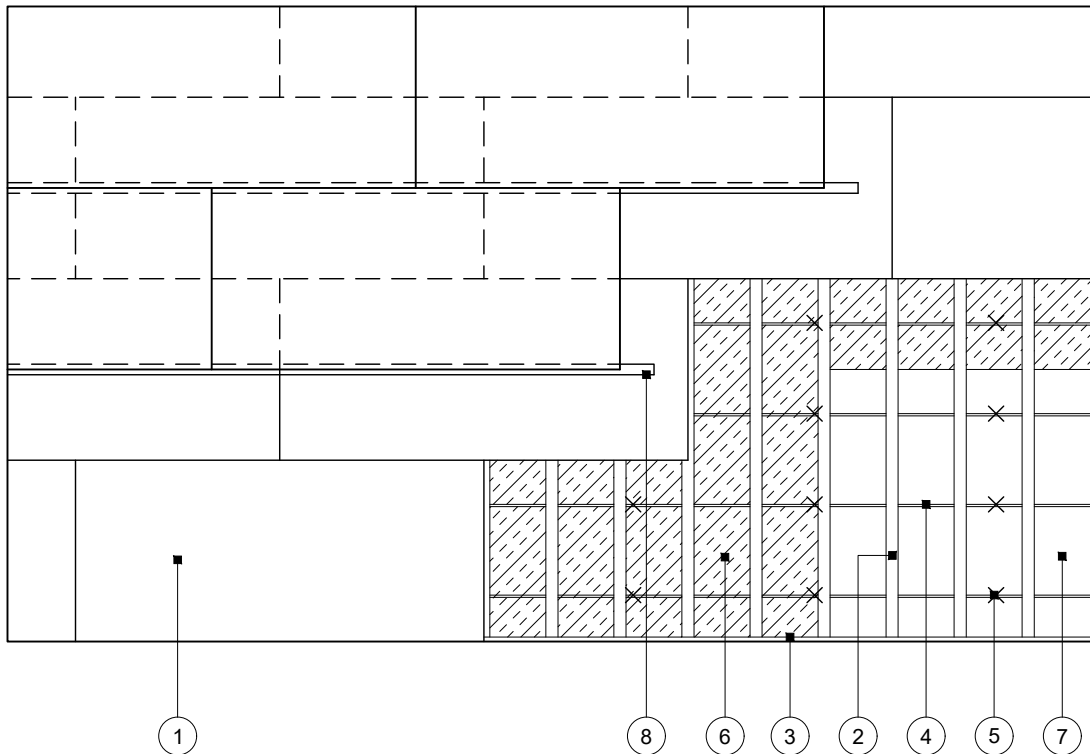


Standard Detail

This drawing provides general guidance where no performance criteria is given and site specific conditions are not taken into account

GypCeiling MF

- 1 Four layers Gyproc FireLine 15mm fixed with suitable British Gypsum screws at 230mm centres in field of board and 150mm centres at board ends. Outer layer requires additional 25mm British Gypsum screw fixings at 200mm centres into Gypframe GFS1 Fixing Strap
- 2 Gypframe MF5 Ceiling Sections at max. 400mm centres fixed to each MF7 with two suitable British Gypsum wafer head screws
- 3 Gypframe MF6 Perimeter Channel suitably fixed to wall at 600mm centres
- 4 Gypframe MF7 Primary Support Channels at max. 600mm centres
- 5 Gypframe MF8 Strap Hanger or FEA1 Steel Angle hangers at max. 1200mm centres fixed to MF7 with two suitable British Gypsum wafer head screws. Gypframe MF12 Soffit Cleat fixed to hanger with MF11 Nut and Bolt and suitably fixed to soffit
- 6 150mm stone mineral wool minimum 22kg/m³ by others
- 7 Concrete soffit
- 8 Outer longitudinal board joints backed with Gypframe GFS1 Fixing Strap as per note 1



Reflected ceiling plan

Title: GypCeiling MF
Concrete soffit and four layers board
Standard details read with project specification

Scale at A4: 1:50
Date: March 2022
Dwg No.: ST-330-CTL4-01

Drawn: MBH
Approved: DRM
Revision:

Technical Support Team | british-gypsum.com

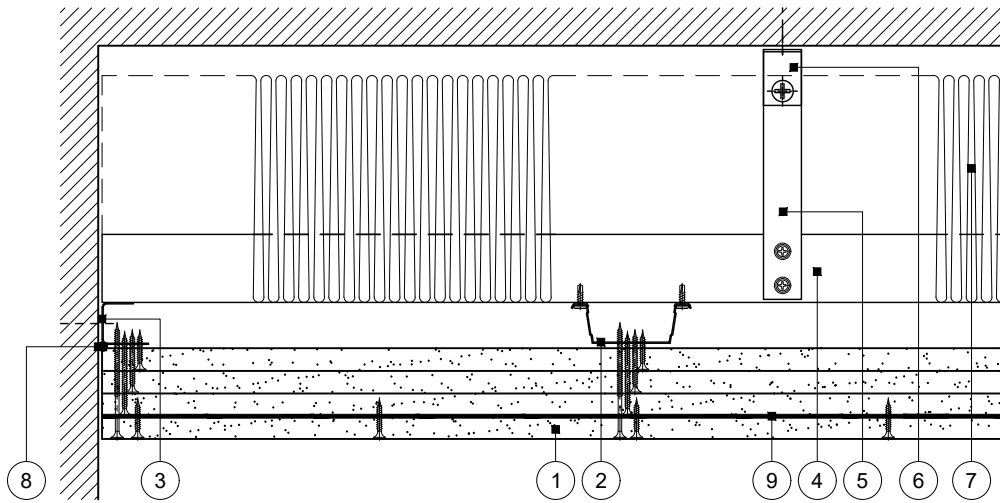
This drawing is provided to customers free of charge and the details shown are subject to the accuracy of the information provided to British Gypsum at the time the drawing was originally requested. The drawing should therefore be approved by the project design and management authority before use to ensure that it meets with their specific project requirements. It should also be read in conjunction with British Gypsum's current literature available at www.british-gypsum.com. Taping and finishing in accordance with British Gypsum's current recommendations is assumed (with the exception of FireCase system). Please note the drawing may show British Gypsum products fixed by or to products that are non-British Gypsum products/fixings please refer to Specifying Authority for specification details. This drawing is valid at the time of issue, please check with British Gypsum for the latest version. No duty of care is owed to the recipient or any third party and British Gypsum excludes all liability in respect of the details shown save where death or personal injury is caused due to British Gypsum's negligence or for fraud.

Standard Detail

This drawing provides general guidance where no performance criteria is given and site specific conditions are not taken into account

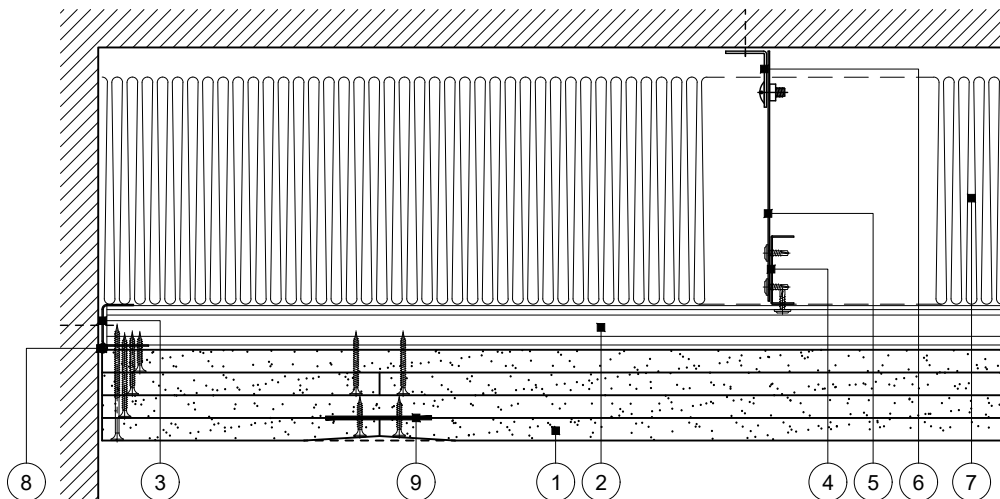
GypCeiling MF

- 1 Four layers Gyproc FireLine 15mm fixed with suitable British Gypsum screws at 230mm centres in field of board and 150mm centres at board ends. Outer layer requires additional 25mm British Gypsum screw fixings at 200mm centres into Gypframe GFS1 Fixing Strap
- 2 Gypframe MF5 Ceiling Sections at max. 400mm centres fixed to each MF7 with two suitable British Gypsum wafer head screws
- 3 Gypframe MF6 Perimeter Channel suitably fixed to wall at 600mm centres
- 4 Gypframe MF7 Primary Support Channels at max. 600mm centres
- 5 Gypframe MF8 Strap Hanger or FEA1 Steel Angle hangers at max. 1200mm centres fixed to MF7 with two suitable British Gypsum wafer head screws
- 6 Gypframe MF12 Soffit Cleat fixed to hanger with MF11 Nut and Bolt and suitably fixed to soffit
- 7 150mm stone mineral wool minimum 22kg/m³ by others
- 8 Gyproc Sealant for optimum sound insulation
- 9 Outer longitudinal board joints backed with Gypframe GFS1 Fixing Strap as per note 1



Perimeter 1

MF5 parallel to wall



Perimeter 2

MF5 perpendicular to wall

Title: GypCeiling MF
Concrete soffit and four layers board
Standard details read with project specification

Scale at A4: 1:5
Date: March 2022
Dwg No.: ST-330-CTL4-02

Drawn: MBH
Approved: DRM
Revision:

Technical Support Team | british-gypsum.com

This drawing is provided to customers free of charge and the details shown are subject to the accuracy of the information provided to British Gypsum at the time the drawing was originally requested. The drawing should therefore be approved by the project design and management authority before use to ensure that it meets with their specific project requirements. It should also be read in conjunction with British Gypsum's current literature available at www.british-gypsum.com. Taping and finishing in accordance with British Gypsum's current recommendations is assumed (with the exception of FireCase system). Please note the drawing may show British Gypsum products fixed by or to products that are non-British Gypsum products/fixings please refer to Specifying Authority for specification details. This drawing is valid at the time of issue, please check with British Gypsum for the latest version. No duty of care is owed to the recipient or any third party and British Gypsum excludes all liability in respect of the details shown save where death or personal injury is caused due to British Gypsum's negligence or fraud.