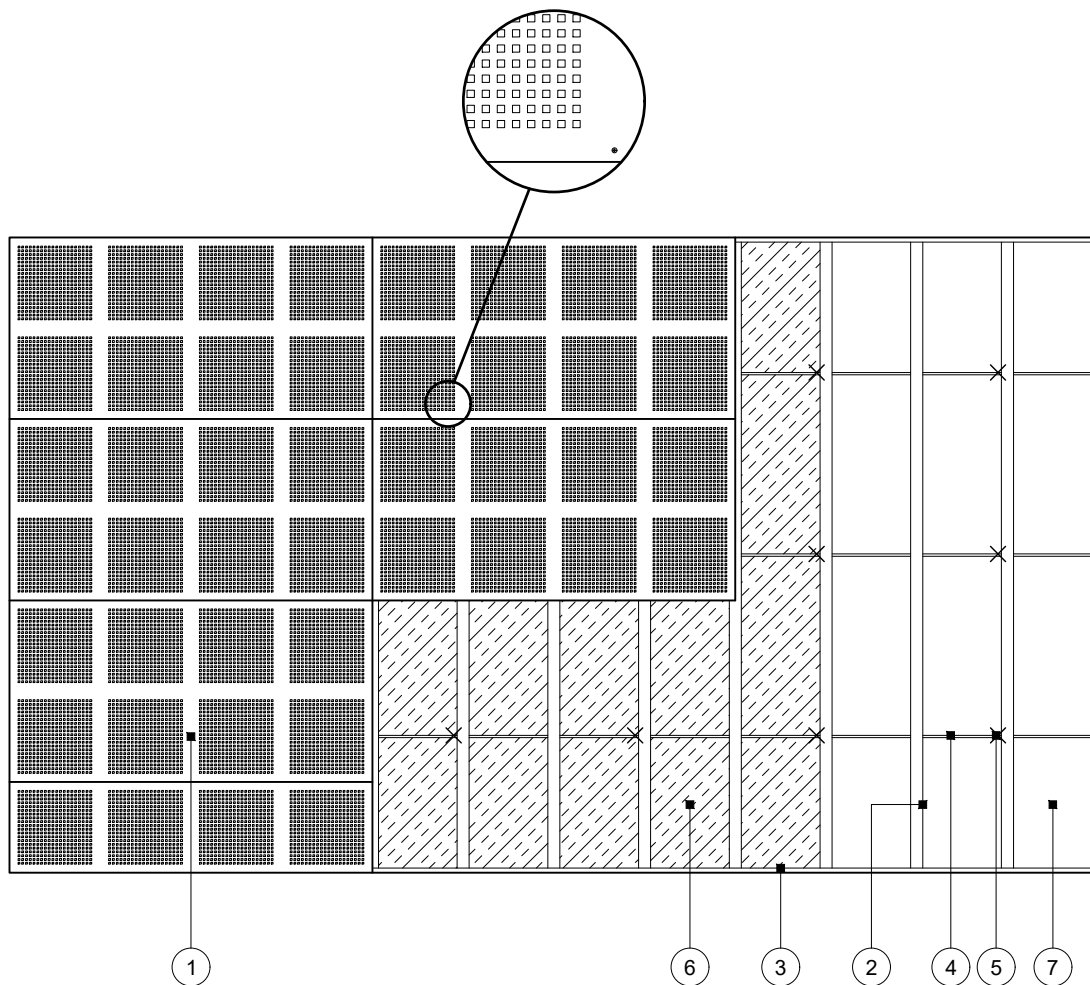


# Standard Detail

This drawing provides general guidance where no performance criteria is given and site specific conditions are not taken into account

## GypCeiling MF

- 1 One layer Gyptone perforated plasterboard fixed with suitable British Gypsum screws at 230mm centres
- 2 Gyprame MF5 Ceiling Sections at specified centres fixed to each MF7 with two suitable British Gypsum wafer head screws or MF9 Connecting Clip
- 3 Gyprame MF6 Perimeter Channel suitably fixed to wall at 600mm centres
- 4 Gyprame MF7 Primary Support Channels at 1200mm centres
- 5 Gyprame MF8 Strap Hanger or FEA1 Steel Angle hangers at 1200mm centres fixed to MF7 with two suitable British Gypsum wafer head screws. Gyprame MF12 Soffit Cleat fixed to hanger with MF11 Nut and Bolt and suitably fixed to soffit
- 6 Isover insulation where required
- 7 Concrete soffit



## Reflected ceiling plan

**Title:** GypCeiling MF  
Concrete soffit and Gyptone perforated board  
Standard details read with project specification

**Scale at A4:** 1:50  
**Date:** October 2021  
**Dwg No.:** ST-321-CTGT-01

**Drawn:** MRC  
**Approved:** MBH  
**Revision:**

Technical Support Team | [british-gypsum.com](http://british-gypsum.com)

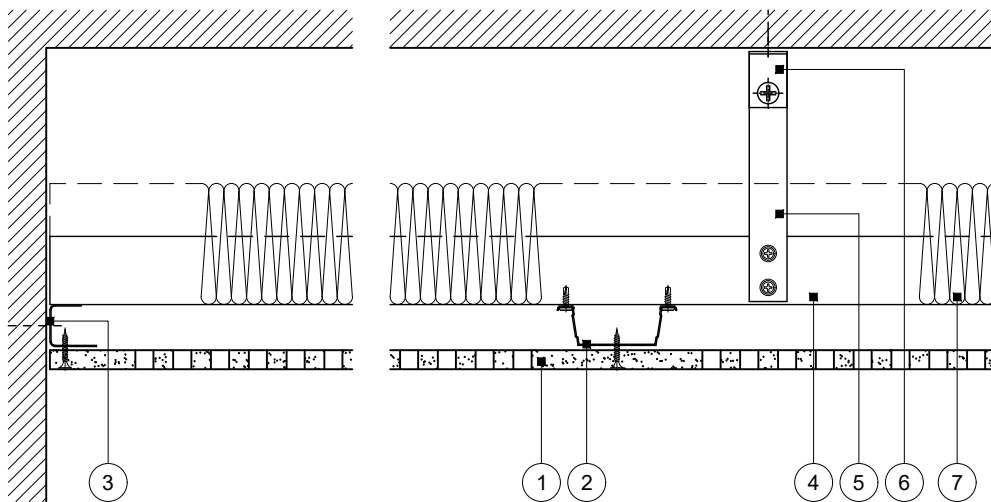
This drawing is provided to customers free of charge and the details shown are subject to the accuracy of the information provided to British Gypsum at the time the drawing was originally requested. The drawing should therefore be approved by the project design and management authority before use to ensure that it meets with their specific project requirements. It should also be read in conjunction with British Gypsum's current literature available at [www.british-gypsum.com](http://www.british-gypsum.com). Taping and finishing in accordance with British Gypsum's current recommendations is assumed (with the exception of FireCase system). Please note the drawing may show British Gypsum products fixed by or to products that are non-British Gypsum products/fixings please refer to Specifying Authority for specification details. This drawing is valid at the time of issue, please check with British Gypsum for the latest version. No duty of care is owed to the recipient or any third party and British Gypsum excludes all liability in respect of the details shown save where death or personal injury is caused due to British Gypsum's negligence or for fraud.

# Standard Detail

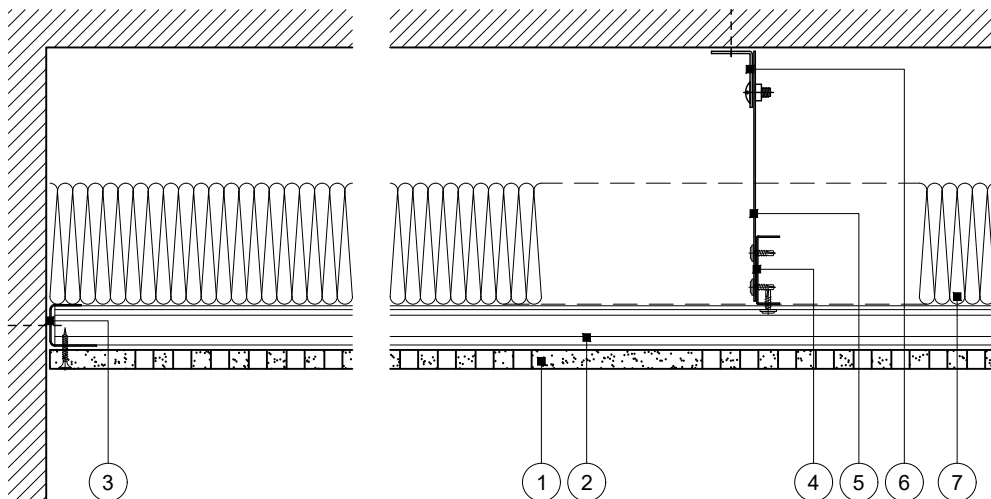
This drawing provides general guidance where no performance criteria is given and site specific conditions are not taken into account

## GypCeiling MF

- |  |   |
|--|---|
| <ol style="list-style-type: none"> <li>1 One layer Gyptone perforated plasterboard fixed with suitable British Gypsum screws at 230mm centres</li> <li>2 Gyframe MF5 Ceiling Sections at specified centres fixed to each MF7 with two suitable British Gypsum wafer head screws or MF9 Connecting Clip</li> <li>3 Gyframe MF6 Perimeter Channel suitably fixed to wall at 600mm centres</li> </ol> | <ol style="list-style-type: none"> <li>4 Gyframe MF7 Primary Support Channels at 1200mm centres</li> <li>5 Gyframe MF8 Strap Hanger or FEA1 Steel Angle hangers at 1200mm centres fixed to MF7 with two suitable British Gypsum wafer head screws</li> <li>6 Gyframe MF12 Soffit Cleat fixed to hanger with MF11 Nut and Bolt and suitably fixed to soffit</li> <li>7 Isover insulation where required</li> </ol> |
|--|---|



**Perimeter 1**  
MF5 parallel to wall



**Perimeter 2**  
MF5 perpendicular to wall

**Title:** GypCeiling MF  
Concrete soffit and Gyptone perforated board  
Standard details read with project specification

**Scale at A4:** 1:5  
**Date:** October 2021  
**Dwg No.:** ST-321-CTGT-02

**Drawn:** MRC  
**Approved:** MBH  
**Revision:**

Technical Support Team | [british-gypsum.com](http://british-gypsum.com)

This drawing is provided to customers free of charge and the details shown are subject to the accuracy of the information provided to British Gypsum at the time the drawing was originally requested. The drawing should therefore be approved by the project design and management authority before use to ensure that it meets with their specific project requirements. It should also be read in conjunction with British Gypsum's current literature available at [www.british-gypsum.com](http://www.british-gypsum.com). Taping and finishing in accordance with British Gypsum's current recommendations is assumed (with the exception of FireCase system). Please note the drawing may show British Gypsum products fixed by or to products that are non-British Gypsum products/fixings please refer to Specifying Authority for specification details. This drawing is valid at the time of issue, please check with British Gypsum for the latest version. No duty of care is owed to the recipient or any third party and British Gypsum excludes all liability in respect of the details shown save where death or personal injury is caused due to British Gypsum's negligence or for fraud.