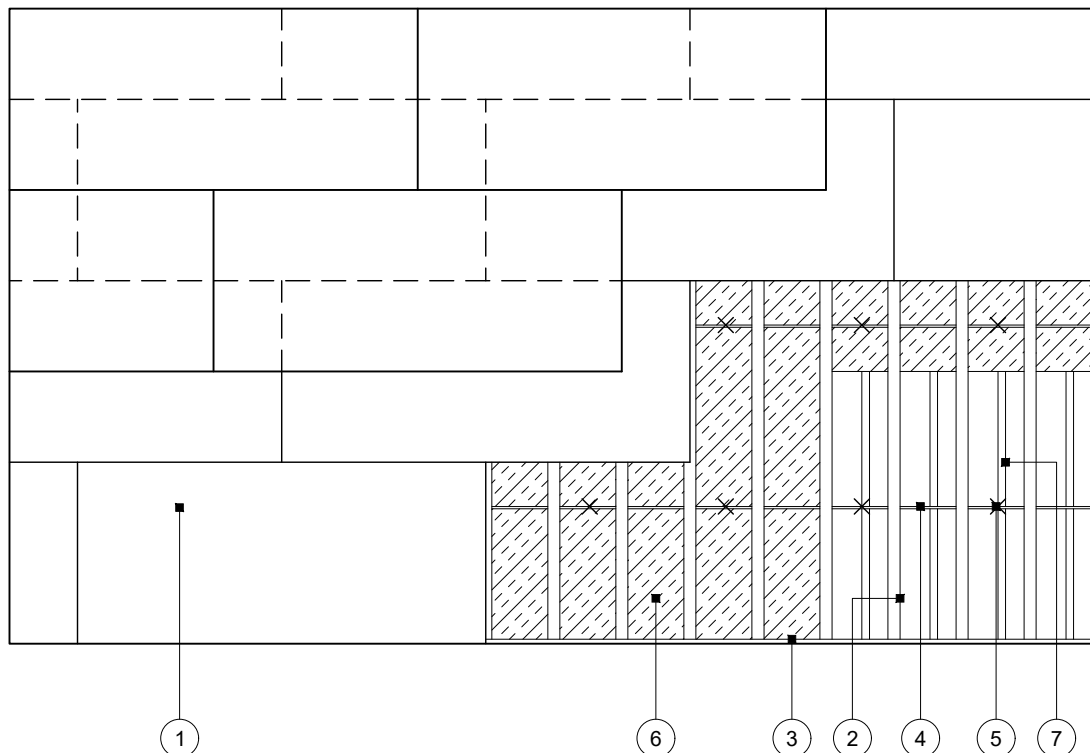


# Standard Detail

This drawing provides general guidance where no performance criteria is given and site specific conditions are not taken into account

## GypCeiling MF

- 1 Two layers Gyproc plasterboard or Glasroc specialist board fixed with suitable British Gypsum screws at 230mm centres in field of board and 150mm centres at board ends
- 2 Gypframe MF5 Ceiling Sections at max. 450mm centres fixed to each MF7 with two suitable British Gypsum wafer head screws or MF9 Connecting Clip
- 3 Gypframe MF6 Perimeter Channel suitably fixed to wall at 600mm centres
- 4 Gypframe MF7 Primary Support Channels at specified centres
- 5 Gypframe MF8 Strap Hanger or FEA1 Steel Angle hangers at specified centres fixed to MF7 with two suitable British Gypsum wafer head screws. Gypframe MF12 Soffit Cleat fixed to hanger with MF11 Nut and Bolt and fixed to acoustic hanger with M6 bolt and locking nut by others. Gypframe GAH2 Acoustic Hanger fixed to joists with two suitable British Gypsum screws (min. 35mm from bottom of joist)
- 6 Isover insulation where required
- 7 Timber joists



## Reflected ceiling plan

**Title:** GypCeiling MF  
Timber joist floor with acoustic hangers and two layers board  
Standard details read with project specification

**Scale at A4:** 1:50  
**Date:** October 2021  
**Dwg No.:** ST-321-AHL2-01

**Drawn:** MRC  
**Approved:** MBH  
**Revision:**

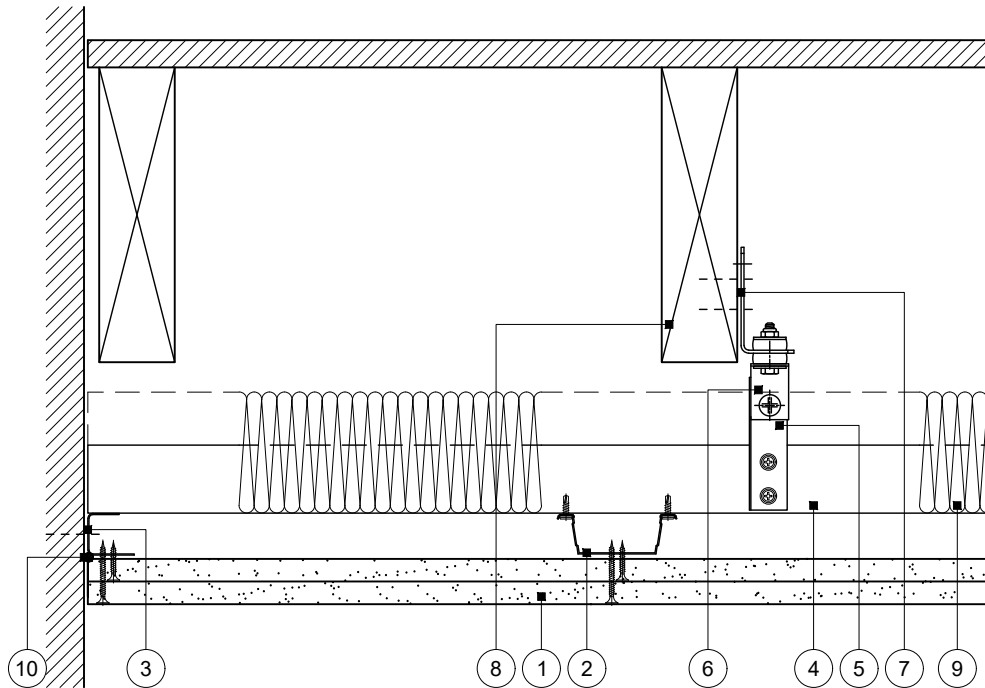
Technical Support Team | [british-gypsum.com](http://british-gypsum.com)

This drawing is provided to customers free of charge and the details shown are subject to the accuracy of the information provided to British Gypsum at the time the drawing was originally requested. The drawing should therefore be approved by the project design and management authority before use to ensure that it meets with their specific project requirements. It should also be read in conjunction with British Gypsum's current literature available at [www.british-gypsum.com](http://www.british-gypsum.com). Taping and finishing in accordance with British Gypsum's current recommendations is assumed (with the exception of FireCase system). Please note the drawing may show British Gypsum products fixed by or to products that are non-British Gypsum products/fixings please refer to Specifying Authority for specification details. This drawing is valid at the time of issue, please check with British Gypsum for the latest version. No duty of care is owed to the recipient or any third party and British Gypsum excludes all liability in respect of the details shown save where death or personal injury is caused due to British Gypsum's negligence or for fraud.

# Standard Detail

This drawing provides general guidance where no performance criteria is given and site specific conditions are not taken into account

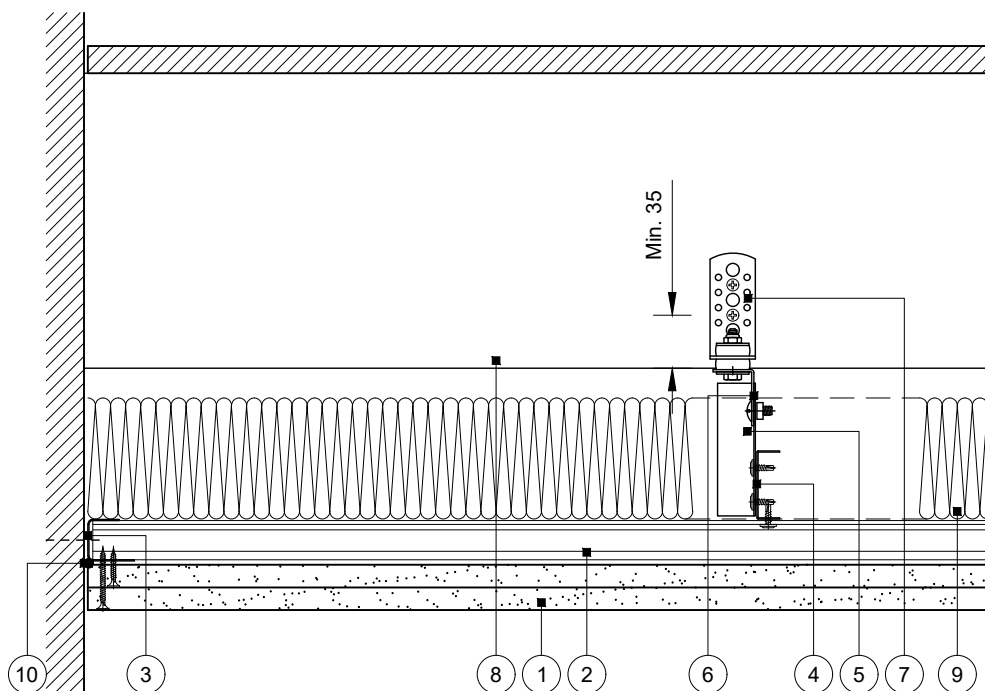
## GypCeiling MF



- 1 Two layers Gyproc plasterboard or Glasroc specialist board fixed with suitable British Gypsum screws at 230mm centres in field of board and 150mm centres at board ends
- 2 Gyproframe MF5 Ceiling Sections at max. 450mm centres fixed to each MF7 with two suitable British Gypsum wafer head screws or MF9 Connecting Clip
- 3 Gyproframe MF6 Perimeter Channel suitably fixed to wall at 600mm centres
- 4 Gyproframe MF7 Primary Support Channels at specified centres
- 5 Gyproframe MF8 Strap Hanger or FEA1 Steel Angle hangers at specified centres fixed to MF7 with two suitable British Gypsum wafer head screws
- 6 Gyproframe MF12 Soffit Cleat fixed to hanger with MF11 Nut and Bolt and fixed to acoustic hanger with M6 bolt (nom. 40mm length) and locking nut by others
- 7 Gyproframe GAH2 Acoustic Hanger fixed to joists with two suitable British Gypsum screws (min. 35mm from bottom of joist)
- 8 Timber joist floor with wood board flooring
- 9 Isover insulation where required
- 10 Gyproc Sealant for optimum sound insulation

## Perimeter 1

MF5 parallel to wall



## Perimeter 2

MF5 perpendicular to wall

**Title:** GypCeiling MF  
Timber joist floor with acoustic hangers and two layers board  
Standard details read with project specification

**Scale at A4:** 1:5  
**Date:** October 2021  
**Dwg No.:** ST-321-AHL2-02

**Drawn:** MRC  
**Approved:** MBH  
**Revision:**

Technical Support Team | [british-gypsum.com](http://british-gypsum.com)

This drawing is provided to customers free of charge and the details shown are subject to the accuracy of the information provided to British Gypsum at the time the drawing was originally requested. The drawing should therefore be approved by the project design and management authority before use to ensure that it meets with their specific project requirements. It should also be read in conjunction with British Gypsum's current literature available at [www.british-gypsum.com](http://www.british-gypsum.com). Taping and finishing in accordance with British Gypsum's current recommendations is assumed (with the exception of FireCase system). Please note the drawing may show British Gypsum products fixed by or to products that are non-British Gypsum products/fixings please refer to Specifying Authority for specification details. This drawing is valid at the time of issue, please check with British Gypsum for the latest version. No duty of care is owed to the recipient or any third party and British Gypsum excludes all liability in respect of the details shown save where death or personal injury is caused due to British Gypsum's negligence or for fraud.