

The Building Test Centre

Fire Acoustics Structures

The Building Test Centre
British Gypsum
East Leake
Loughborough
Leics. LE12 6NP
Tel (0115) 945 1564
Fax (0115) 945 1562
Email btc.testing@saint-gobain.com
Website www.btconline.co.uk

Report Number **BTC 20785AA**

An acoustic test report covering laboratory sound insulation testing to BS EN ISO 10140-2:2010 on a British Gypsum Quiet IWL Twin Frame partition clad with an outer layer of 12.5mm Gyproc Habito and inner layer of 15mm Gyproc SoundBloc F each side with 50mm Isover APR 1200 insulation in the cavity.

Test date: 10th January 2019

Report issued date: 11th January 2019

www.btconline.co.uk

Customer: **British Gypsum**
East Leake
Loughborough
Leicestershire
LE12 6HX

Customer: **British Gypsum**

BTC 20785AA: Page 1 of 14



0296

The Building Test Centre

Fire Acoustics Structures

The Building Test Centre

British Gypsum

East Leake

Loughborough

Leics. LE12 6NP

Tel (0115) 945 1564

Fax (0115) 945 1562

Email btc.testing@saint-gobain.com

Website www.btconline.co.uk

TABLE OF CONTENTS

FOREWORD	3
REPORT AUTHORISATION.....	3
TEST REPORT AMENDMENTS.....	4
TEST CONSTRUCTION.....	5
TEST MATERIALS.....	7
<i>Plasterboard.....</i>	<i>7</i>
<i>Insulation.....</i>	<i>7</i>
<i>Metal Components</i>	<i>8</i>
<i>Fasteners.....</i>	<i>8</i>
<i>Miscellaneous Components</i>	<i>8</i>
TEST RESULTS.....	9
TEST PROCEDURE.....	9
LIMITATIONS.....	10
APPENDIX A - TEST DATA.....	11
APPENDIX B - TEST METHOD AND CONDITIONS.....	13

Customer: **British Gypsum**

BTC 20785AA: Page 2 of 14



0296

FOREWORD

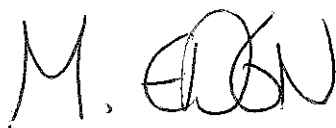
The test sponsor was British Gypsum.

The test specimen was installed by Karl Negus and John Gwynne on the 10th January 2019.

The Building Test Centre played no role in the design or selection of the materials comprising the test specimen.

REPORT AUTHORISATION

Report Author



Macaulay Eden
BEng (Hons)
Scientist

Authorised by



Yasmin Latif
BSc (Hons) MSc
Section Manager

The Building Test Centre will not discuss the content of this report without written permission from the test sponsor. The Building Test Centre retains ownership of the test report content but authorises the test sponsor to reproduce the report as necessary in its entirety only.

Customer: **British Gypsum**

BTC 20785AA: Page 3 of 14



0296

The Building Test Centre

Fire Acoustics Structures

The Building Test Centre
British Gypsum
East Leake
Loughborough
Leics. LE12 6NP
Tel (0115) 945 1564
Fax (0115) 945 1562
Email btc.testing@saint-gobain.com
Website www.btconline.co.uk

TEST REPORT AMENDMENTS

Page	Amendments	Date

Report Amendments Author

Name
Role

Amendments Authorised by

Name
Role

Customer: **British Gypsum**

BTC 20785AA: Page 4 of 14



0296

TEST CONSTRUCTION

The test specimen was constructed in an aperture having an overall opening of 2400mm (high) x 3600mm (wide).

Gypframe 50FEC50 Folded Edge Standard Floor and Ceiling Channels were fixed to the head and base of the test aperture at 600mm centres using 25mm British Gypsum Drywall Screws.

Gypframe 48S50 'C' Studs were positioned between the head and base channels at each end of the aperture and fixed using 25mm British Gypsum Drywall Screws spaced at 600mm centres.

Gypframe 48I50 'I' Studs were positioned between the head and base channels at 600mm centres.

A second framework using the same components and fixing details was located to create the twin frame and a final partition thickness of 200mm. The Gypframe 48I50 'I' Studs were located at 600mm centres parallel with the first set of framework studs.

50mm Isover Acoustic Partition Roll 1200 insulation was placed within the cavity between the frameworks and hung from the top of the partition using two 25mm British Gypsum Drywall Screws.

The framework was clad with an inner layer of 15mm Gyproc SoundBloc F and an outer layer of 12.5mm Gyproc Habito on each side.

The inner layer of boards was screw fixed around the perimeter of the board at 300mm centres using 25mm British Gypsum Drywall Screws.

The outer layer of boards was screw fixed around the perimeter of the board and the intermediate stud positions at 300mm centres using 40mm British Gypsum High Performance Fixings.

All vertical joints were staggered between layers. All joints and screw heads were taped and the perimeter was taped and sealed with Gyproc Sealant.

The Building Test Centre

Fire Acoustics Structures

The Building Test Centre
British Gypsum
East Leake
Loughborough
Leics. LE12 6NP
Tel (0115) 945 1564
Fax (0115) 945 1562
Email btc.testing@saint-gobain.com
Website www.btconline.co.uk

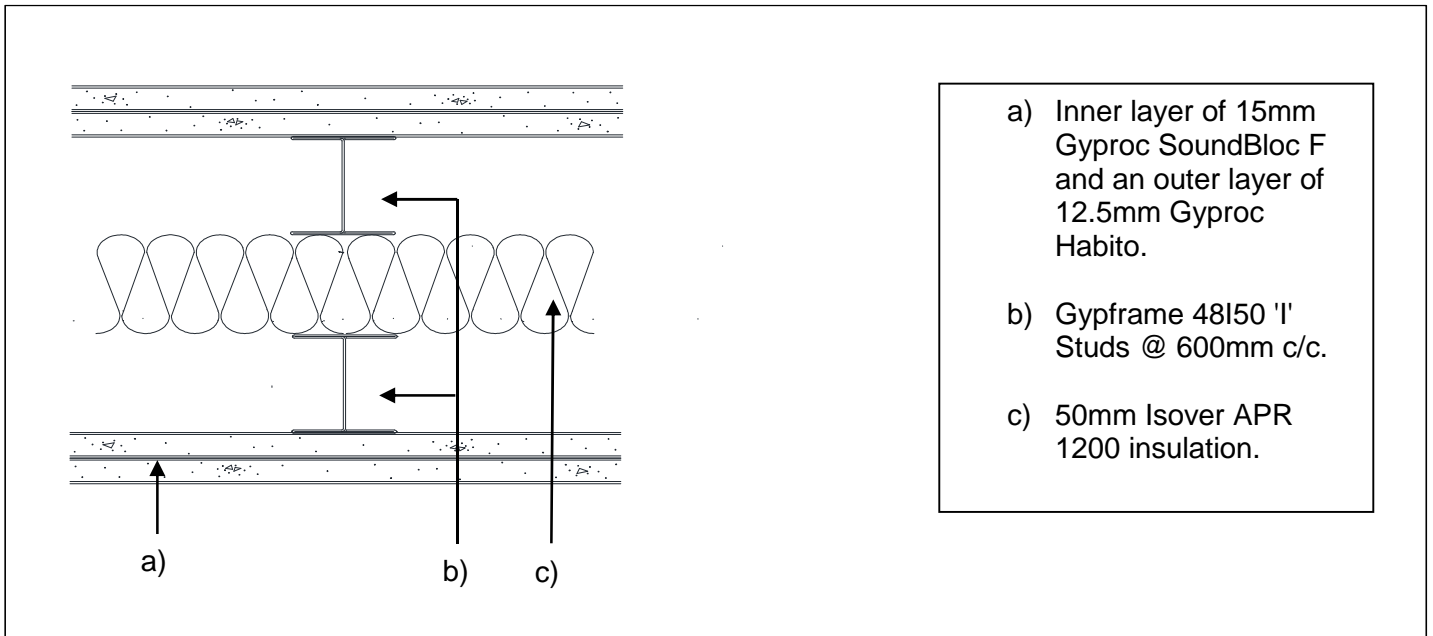


Figure 1. Horizontal cross section view

The descriptions of individual components making up the test specimen were provided by the customer and were checked for accuracy wherever possible.

TEST MATERIALS

Plasterboard

- i) Nominally 2400mm (long) x 1200mm (wide) x 15mm (thick) Gyproc SoundBloc F manufactured by British Gypsum, ex Kirkby Thore.

Surface density:	13.9kg/m ²
Average thickness:	15.3mm
Board Code:	26 253 18 13:06
	26 253 18 13:06
	26 253 18 13:06

- ii) Nominally 2400mm (long) x 1200mm (wide) x 12.5mm (thick) Gyproc Habito manufactured by British Gypsum, ex Sherburn.

Surface density:	12.0kg/m ²
Average thickness:	12.8mm
Board Code:	31 297 18 13:57
	31 297 18 13:57
	31 297 18 13:57

The surface densities were calculated using the actual weight and size of a selection of the boards used in the test specimen.

Material dimensions were supplied by the customer.

Insulation

- i) Nominally 50mm thick Isover APR 1200 insulation supplied by British Gypsum.

Average area	15.60m ²
Average weight	9.92kg
Density	12.72kg/m ³

The density was calculated using the actual weight and size of the insulation used in the test specimen.

Material dimensions were supplied by the customer.

Customer: **British Gypsum**

The Building Test Centre

Fire Acoustics Structures

The Building Test Centre
British Gypsum
East Leake
Loughborough
Leics. LE12 6NP
Tel (0115) 945 1564
Fax (0115) 945 1562
Email btc.testing@saint-gobain.com
Website www.btconline.co.uk

Metal Components

- i) 0.5mm thick Gypframe 48S50 'C' Studs manufactured from galvanised mild steel using the UltraEMBOSED™ process.
- ii) 0.5mm thick Gypframe 50FEC50 Folded Edge Standard Floor and Ceiling Channels manufactured from galvanised mild steel using the UltraEMBOSED™ process.
- iii) 0.5mm thick Gypframe 48I50 'I' Studs manufactured from galvanised mild steel using the UltraSTEEL™ process.

All metal components supplied by British Gypsum

Fasteners

- i) 25mm British Gypsum Drywall Screws.
- ii) 40mm British Gypsum High Performance Fixings.

All fasteners supplied by British Gypsum.

Miscellaneous Components

- i) Gyproc Sealant supplied by British Gypsum.
- ii) Joint tape supplied by The Building Test Centre.

Where measurements could not be taken, then weight and dimensions were provided by the customer or the manufacturer e.g. from material labelling. Material information was recorded according to procedure AP070 vs 1.1.

Customer: **British Gypsum**

BTC 20785AA: Page 8 of 14



0296

TEST RESULTS

Test Code	Description	Weighted Airborne Sound Reduction Index R_w (C; Ctr)
H20785AA	British Gypsum Quiet IWL Twin Frame partition clad with an outer layer of 12.5mm Gyproc Habito and inner layer of 15mm Gyproc SoundBloc F each side with 50mm Isover APR 1200 insulation in the cavity.	65(-3;-8) dB

For full data see Appendix A of this report.

Test conducted in accordance with BS EN ISO 10140-2:2010 except for Clause A.2 in BS EN ISO 10140-4:2010 where minimum distances for measurements at frequencies under 100Hz cannot be met.

Rated in accordance with BS EN ISO 717-1: 2013.

No visible damage of the test specimen occurred during test.

Testing to BS EN ISO 10140-2:2010 conforms to the requirements of BS EN ISO 140-3:1995 (withdrawn).

Where the uncertainty of measured values is stated, (e.g. temperature, relative humidity and static pressure) the reported expanded uncertainty is based on a standard uncertainty multiplied by a coverage factor $k=2$, providing a coverage probability of approximately 95%. The uncertainty evaluation has been carried out in accordance with UKAS requirements.

TEST PROCEDURE

The test specimen (3.6 m x 2.4 m) was constructed in a wall dividing two reverberant rooms of approximately 98m³ and 62m³. The accuracy of the test method conforms to BS EN 20140-2:1993, the test procedure used is detailed in the test data in Appendix A of this report. Broad-band white noise was used to measure the level differences and broad-band pink noise was used to measure the reverberation times. Third octave band pass filters were used in real time mode. See appendix B for further information.

Customer: **British Gypsum**

BTC 20785AA: Page 9 of 14



0296

The Building Test Centre

Fire Acoustics Structures

The Building Test Centre
British Gypsum
East Leake
Loughborough
Leics. LE12 6NP
Tel (0115) 945 1564
Fax (0115) 945 1562
Email btc.testing@saint-gobain.com
Website www.btconline.co.uk

LIMITATIONS

The results only relate to the behaviour of the element of construction under the particular conditions of test; they are not intended to be the sole criteria for assessing the potential acoustic performance of the element in use nor do they reflect the actual behaviour.

Customer: **British Gypsum**

BTC 20785AA: Page 10 of 14

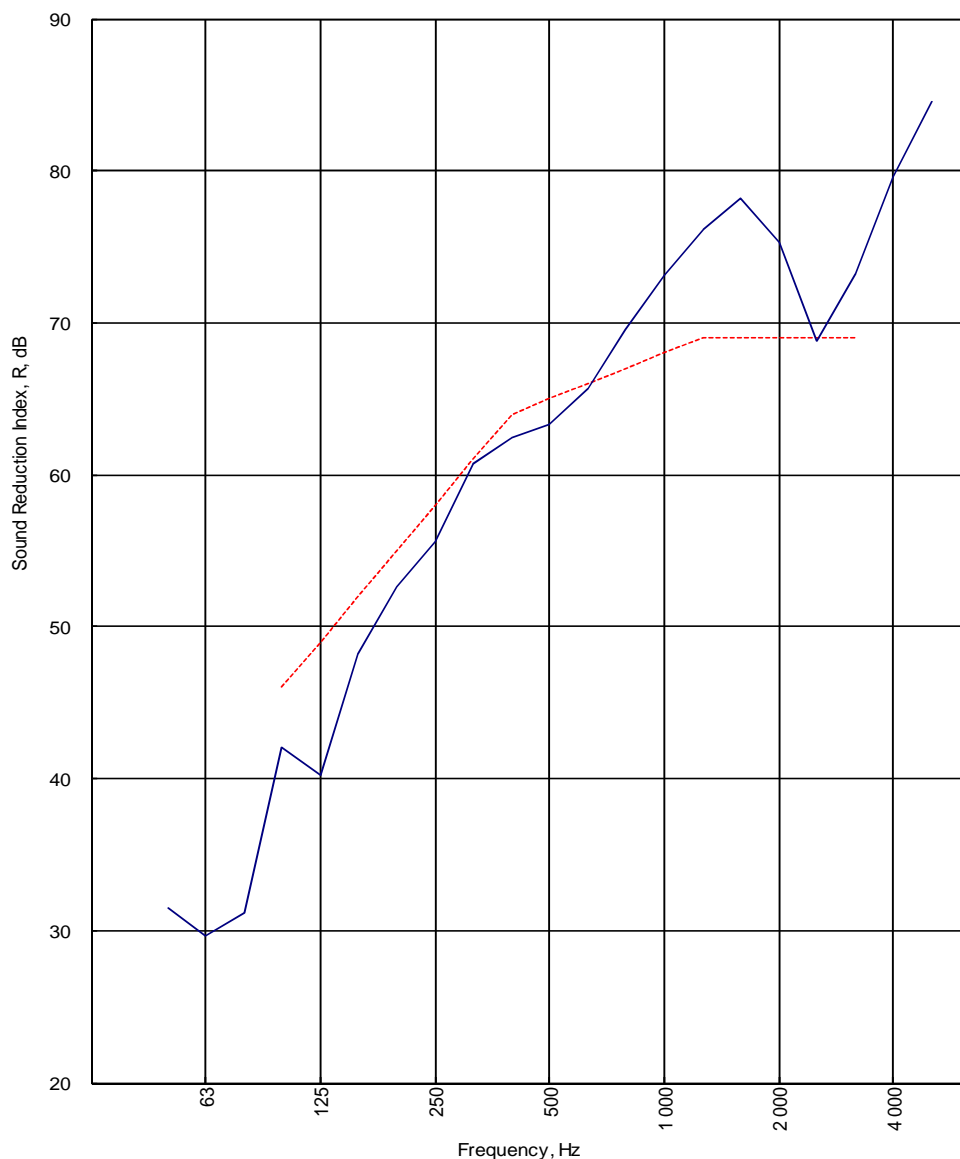


0296

APPENDIX A - TEST DATA

Test Code:
H20785AA
Test Date:
10/01/2019

Freq. Hz	R dB
50	31.5
63	29.6
80	31.2
100	42.1
125	40.2
160	48.2
200	52.6
250	55.7
315	60.7
400	62.4
500	63.3
630	65.7
800	69.6
1 000	73.1
1 250	76.1
1 600	78.2
2 000	75.3
2 500	68.8
3 150	73.2
4 000	79.6
5 000	84.6



----- Curve of reference values (ISO 717-1)

Rating according to
BS EN ISO 717-1:2013

R_w (C;C_{tr}) = 65 (-3;-8) dB

Max dev. 8.8 dB at 125 Hz

Evaluation based on laboratory
measurement results obtained by
an engineering method:

C₅₀₋₃₁₅₀ = -6 dB

C₅₀₋₅₀₀₀ = -5 dB

C₁₀₀₋₅₀₀₀ = -2 dB

C_{tr,50-3150} = -17 dB

C_{tr,50-5000} = -17 dB

C_{tr,100-5000} = -8 dB

Customer: **British Gypsum**

BTC 20785AA: Page 11 of 14



0296

LABORATORY AIRBORNE SOUND INSULATION TEST - BS EN ISO 10140-2:2010

Test Code: **H20785AA**

Test Date: **10/01/2019**

Specimen Area, S = 8.64 m ²	Room Volume, m ³ : 98	Room T2	Room T1	
	Temperature, deg.C:	14.5	14.8	± 0.3
	Rel. Humidity, %RH:	51.9	54.4	± 1.6
	Static Pressure, Pa:	120400	102400	± 65

Freq Hz	Test Room T2 to Test Room T1						R dB	U.Dev. dB	R 1/1Oct dB
	Source dB	Rec. (uc) dB	Bgrnd dB	Rec. (corr) dB	Rev.time Sec	Corr. dB			
50	88.9	55.2	14.5	55.2	0.66	-2.2	31.5		
63	92.5	61.8	15.5	61.8	0.86	-1.1	29.6		30.7
80	101.6	69.0	6.5	69.0	0.79	-1.4	31.2		
100	105.3	63.0	3.6	63.0	1.05	-0.2	42.1	3.9	
125	104.4	64.0	5.2	64.0	1.06	-0.2	40.2	8.8	42.4
160	110.7	62.8	3.5	62.8	1.17	0.3	48.2	3.8	
200	113.3	62.1	14.4	62.1	1.53	1.4	52.6	2.4	
250	114.8	60.8	2.9	60.8	1.61	1.7	55.7	2.3	55.2
315	114.2	55.3	7.9	55.3	1.67	1.8	60.7	0.3	
400	111.7	50.7	23.9	50.7	1.50	1.4	62.4	1.6	
500	109.7	47.6	8.0	47.6	1.45	1.2	63.3	1.7	63.6
630	107.7	43.4	5.7	43.4	1.51	1.4	65.7	0.3	
800	107.1	39.2	4.2	39.2	1.62	1.7	69.6		
1 000	105.8	34.4	13.7	34.4	1.63	1.7	73.1		72.1
1 250	105.1	30.8	3.7	30.8	1.68	1.8	76.1		
1 600	107.3	30.9	2.6	30.9	1.68	1.8	78.2		
2 000	108.4	34.9	3.2	34.9	1.65	1.8	75.3		72.3
2 500	105.8	38.0	3.1	38.0	1.39	1.0	68.8	0.2	
3 150	103.9	31.5	3.8	31.5	1.32	0.8	73.2		
4 000	103.2	24.2	8.3	24.2	1.25	0.6	79.6		76.8
5 000	105.3	21.4	10.4	21.0	1.17	0.3	84.6		
6 300									
8 000									
10 000									

Single Figure Ratings	Rw	C	Ctr	Total U. Dev., dB	25.3
BS EN ISO 717-1: 2013	dB	dB	dB		
	65	-3	-8		
	(100-5000)	-2	-8		
Background Corrected	(50-3150)	-6	-17		
	(50-5000)	-5	-17	Procedure: AP 046 vs 5.2	
				Worksheet: 140_3_1.XLS	

Customer: **British Gypsum**

BTC 20785AA: Page 12 of 14



0296

APPENDIX B - TEST METHOD AND CONDITIONS

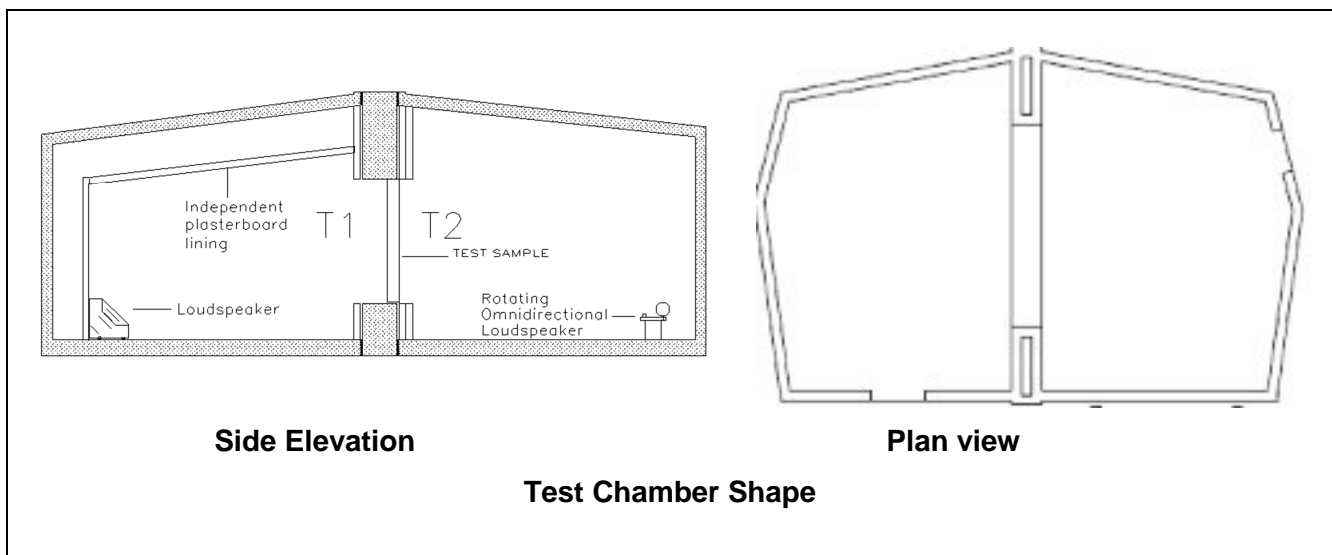
Method

The average sound pressure level in each 1/3 octave band is measured using a rotating microphone boom, positioned such that the minimum distance between microphone and sound source is 1m and between microphone and room boundaries is 0.7m. The rotating microphone has a sweep radius of at least 1m and is inclined in relation to the boundaries at an angle of at least 30° to the horizontal. The microphone has a traverse time of 32 seconds, and the sound pressure levels are averaged over 64 seconds which is equivalent to two complete sweeps of the microphone boom.

The equivalent absorption area of the receiving room is determined by producing the arithmetic average of twelve reverberation times and applying this to the Sabine formula.

Test Chamber Layout

The test suite is constructed to be as independent from the surround building as is physically possible in order to minimise flanking transmission paths.

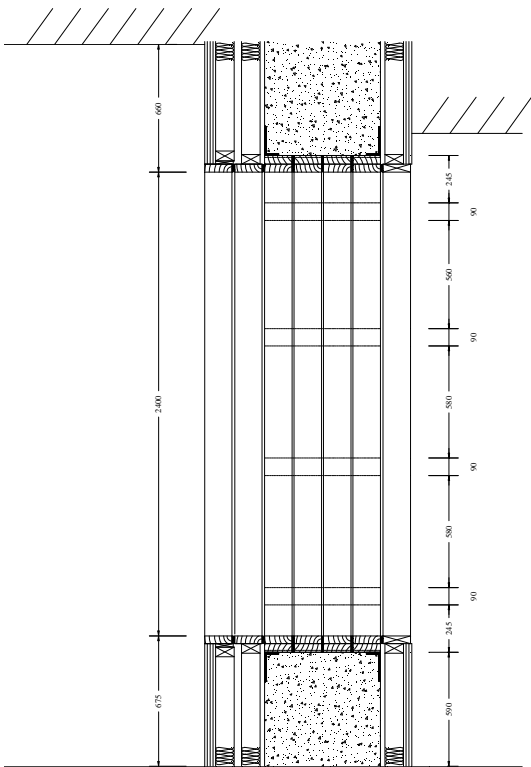


The source room (T2) contains two perspex diffusers of approximately 900mm x 1220mm. Panel absorbers are used to ensure reverberation times in source room (T2) are between one and two seconds at all frequencies at and above 100 Hz. An omni-directional loudspeaker sound source is placed near a back corner of the source room (T2), rotating at 1 rpm and at least 0.7m from any room boundary. A stationary loudspeaker sound source is placed in the corner of the receiving room (T1) opposite the test specimen.

Mounting

The BTC has a solid concrete frame which has been additionally lined to give improved reduction of flanking transmission. This is in order to ensure that, as far as possible, lab limits will not restrict the real performance measurement of just the test specimen.

Recommendations for installation position within the niche are given in our Installation Guidance Document. Details of actual installation position are held by the BTC in the Test Report folder.



Cross section of test aperture

Lab Limits

The laboratory limit for measurement due to flanking is (combined BTC 11709A, BTC13562EA, BTC 15829A and BTC 19792A).

Freq Hz	50	63	80	100	125	160	200	250	315	400	500	630	800	1000	1250	1600	2000	2500	3150	4000	5000
R'max	45.0	46.9	58.5	62.4	62.9	67.7	71.2	77.2	84.2	92.0	97.7	101.5	103.8	97.6	102.4	104.8	101.8	102.9	98.7	96.4	96.3

Uncertainties for test

The uncertainties values for test are taken from ISO 12999-1 situation B situ standard deviation.

Freq Hz	50	63	80	100	125	160	200	250	315	400	500	630	800	1000	1250	1600	2000	2500	3150	4000	5000
Standard Uncertainty	4.0	3.6	3.2	2.8	2.4	2.0	1.8	1.6	1.4	1.2	1.1	1.0	1.0	1.0	1.0	1.0	1.0	1.3	1.6	1.9	2.2

Descriptor	Rw	Rw + C (100-3150)	Rw + Ctr (100-3150)	Rw + C (100-5000)	Rw + Ctr (100-5000)	Rw + C (50-3150)	Rw + Ctr (50-3150)	Rw + C (50-5000)	Rw + Ctr (50-5000)
Standard Uncertainty	0.9	0.9	1.1	1.1	1.1	1.0	1.3	1.1	1.0

Customer: British Gypsum

