



Report Number **BTC 11885A**

SOUND INSULATION TEST REPORT COVERING A TEST TO BS EN ISO 140-3:1995 ON A GYPROC GYPWALL™ dB PLUS PARTITION CONSISTING OF 146mm GYPROC ACOUSTIC STUDS CLAD EACH SIDE WITH A DOUBLE LAYER OF 15mm GYPROC SOUNDBLOC BOARD INCORPORATING A 50mm ISOWOOL QUILT IN THE CAVITY.

Test Date: 20<sup>th</sup> February 2002

Customer: **British Gypsum Ltd.**  
East Leake  
Loughborough  
Leicestershire  
LE12 6HX

Customer: **British Gypsum Ltd.**

BTC 11885A: Page 1 of 9



No. 0296



SOUND INSULATION TEST REPORT COVERING A TEST TO BS EN ISO 140-3:1995 ON A GYPROC GYPWALL™ dB PLUS PARTITION CONSISTING OF 146mm GYPROC ACOUSTIC STUDS CLAD EACH SIDE WITH A DOUBLE LAYER OF 15mm GYPROC SOUNDBLOC BOARD INCORPORATING A 50mm ISOWOOL QUILT IN THE CAVITY.

**TABLE OF CONTENTS**

<b><i>FOREWORD</i></b> _____	<b>3</b>
<b><i>REPORT AUTHORISATION</i></b> _____	<b>3</b>
<b><i>TEST CONSTRUCTION</i></b> _____	<b>4</b>
<b><i>TEST MATERIALS</i></b> _____	<b>5</b>
Gyproc SoundBloc _____	<b>5</b>
Metal components _____	<b>5</b>
Fasteners _____	<b>5</b>
Insulation _____	<b>5</b>
<b><i>TEST PROCEDURE</i></b> _____	<b>6</b>
<b><i>TEST RESULTS</i></b> _____	<b>6</b>
<b><i>LIMITATIONS</i></b> _____	<b>6</b>
<b><i>APPENDIX A: TEST DATA</i></b> _____	<b>7</b>
<b><i>APPENDIX B: TEST METHOD AND CONDITIONS</i></b> _____	<b>9</b>

## **FOREWORD**

This test report details a sound insulation test conducted on a sheet and stud partition system. The test sponsor was British Gypsum Limited.

The test specimen was installed by British Gypsum Limited. The construction of the specimen took place on the 20<sup>th</sup> February 2002.

## **REPORT AUTHORISATION**

Report Author

**Franklin Sanicharane**  
HND, BEng. (Hons.).  
*Technologist*

Authorised by

Eur Ing. **Paul Howard**  
BSc. (Hons.), CEng., MIOA  
*Head of Laboratory*

*The Building Test Centre will not discuss the content of this report without written permission from the test sponsor. The Building Test Centre retains ownership of the test report content but authorises the test sponsor to reproduce the report as necessary in its entirety only.*

Customer: **British Gypsum Ltd.**

BTC 11885A: Page 3 of 9

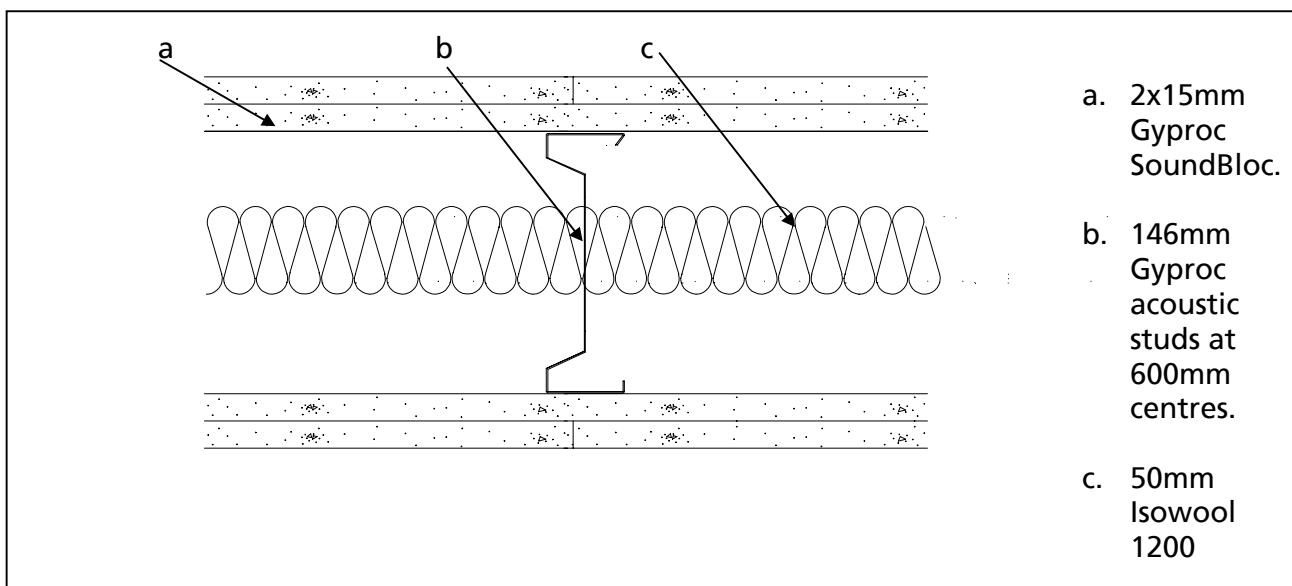


No. 0296

## TEST CONSTRUCTION

Gyproc 148C50 metal channel was screw fixed at 600mm centres to the head and the base of the test aperture using 25mm Gyproc Drywall screws. Two Gyproc 146S50 studs were screw fixed to either side of the test aperture at 600mm centres using 25mm Gyproc Drywall screws. The 146mm Gyproc acoustic studs were inserted between the head and base channels at 600mm centres. A double layer of 15mm Gyproc SoundBloc board was screw fixed to either side of the metal framework. The inner layer was fixed using 25mm Gyproc Drywall screws fixed at 300mm centres around the perimeter of the board, the outer layer was screw fixed around the perimeter of the board and to the intermediate studs using 42mm Gyproc Drywall screws. 50mm Isowool 1200 was inserted inside the partition cavity.

The perimeter of the partition was sealed to the test aperture with Gyproc sealant. The board joints and screw heads were covered with Gyproc adhesive tape.



**Figure 1.** Cross-section through the partition.

*The descriptions of individual components making up the test specimen were provided by the customer and were checked for accuracy wherever possible.*

## TEST MATERIALS

### Gyproc SoundBloc

Nominally 2400mm (long) x 1200mm (wide) x 15mm (thick) Gyproc SoundBloc Board manufactured by British Gypsum Limited ex East Leake works.

Average surface density:	12.74kg/m <sup>2</sup>
Actual thickness:	14.89 mm
Board code:	270072 02:10

The surface density was calculated using the actual weight and size of the boards used in the test specimen.

### Metal components

- i) 146mm Gyproc acoustic studs manufactured from hot dipped galvanised mild steel 0.5mm thick.
- ii) Gyproc 148C50 channel manufactured from hot dipped galvanised mild steel.
- iii) 146S50 studs manufactured from hot dipped galvanised mild steel 0.5mm thick using the Ultrasteel process.

All components supplied by British Gypsum Limited.

### Fasteners

- i) 25mm Gyproc S point screws supplied by British Gypsum Limited.
- ii) 42mm Gyproc S point screws supplied by British Gypsum Limited.

### Insulation

Nominally 50mm Isowool 1200 glass mineral wool insulation manufactured by British Gypsum- Isover Limited.

- i) Average surface density 0.69 Kg/m<sup>2</sup>
- ii) Average density 13.82Kg/m<sup>3</sup>

Where measurements could not be taken then weight and dimensions were provided by the customer or the manufacturer e.g. from material labelling. Material information was recorded according to procedure MAT/1

Customer: **British Gypsum Ltd.**

## **TEST PROCEDURE**

The test specimen (3.6 m x 2.4 m) was constructed in a wall dividing two reverberant rooms of approximately 98m<sup>3</sup> and 62m<sup>3</sup>. The accuracy of the test method conforms to BS EN 20140-2:1993, the test procedure used was 140/3 issue 3. Broad-band white noise was used to measure the level differences and broad-band pink noise was used to measure the reverberation times. Third octave band pass filters were used in real time mode. See appendix B for further information.

## **TEST RESULTS**

**Weighted Airborne Sound Reduction Index**

**$R_w$  (C; Ctr) = 61 (-2; -5) dB**

For full data see pages 7 - 8.

Test conducted in accordance with BS EN ISO 140-3: 1995  
Rated in accordance with BS EN ISO 717-1: 1997

## **LIMITATIONS**

The results only relate to the behaviour of the element of construction under the particular conditions of test; they are not intended to be the sole criteria for assessing the potential acoustic performance of the element in use nor do they reflect the actual behaviour.

The specification and interpretation of test methods are the subject of ongoing development and refinement. Changes in associated legislation may also occur. For these reasons it is recommended that the relevance of test reports over 5 years old should be considered by the user. The laboratory that issued the report will be able to offer, on behalf of the legal owner, a review of the procedures adopted for a particular test to ensure that they are consistent with current practices, and if required may endorse the test report.

Customer: **British Gypsum Ltd.**

BTC 11885A: Page 6 of 9

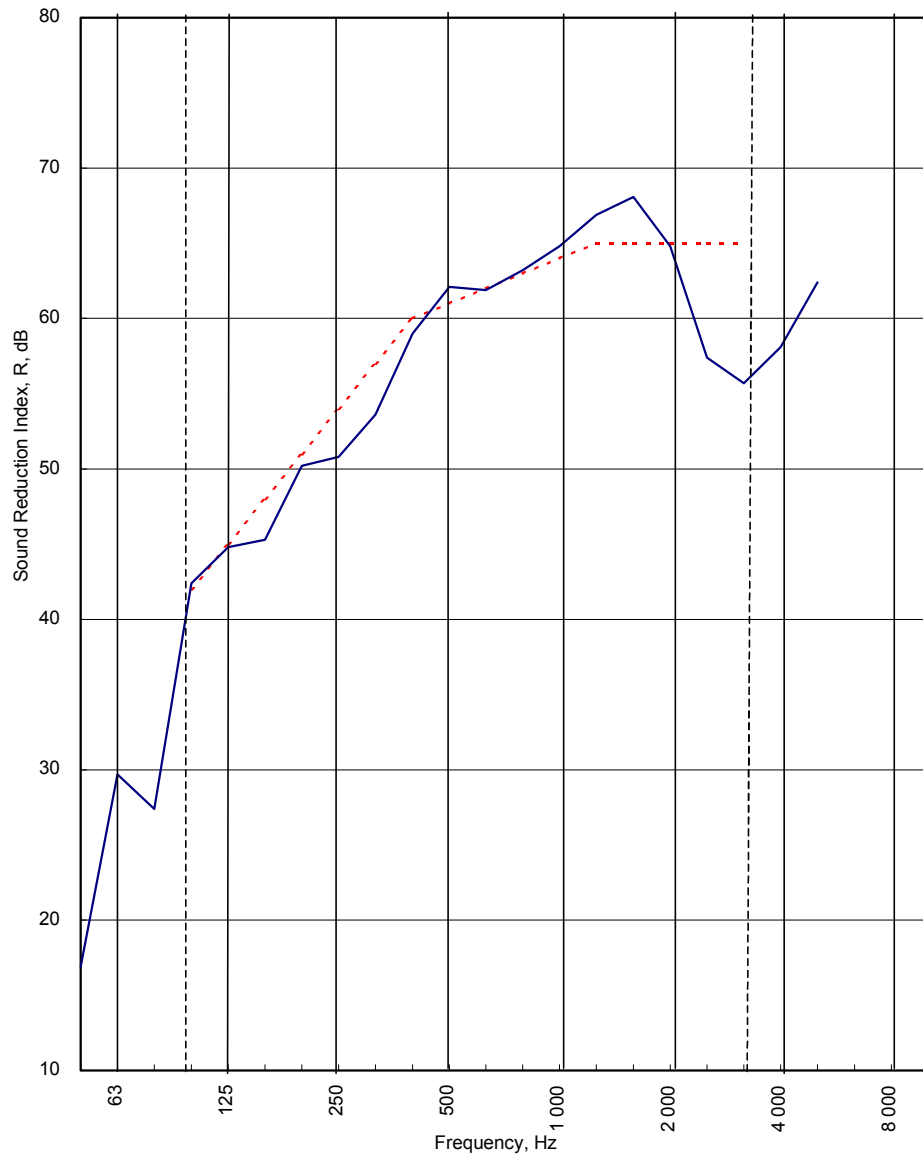


No. 0296

## APPENDIX A- TEST DATA

Test Code: H11885A
Test Date: 20/02/02

Freq. Hz	R dB
50	16.9
63	29.7
80	27.4
100	42.4
125	44.8
160	45.3
200	50.2
250	50.8
315	53.6
400	59.0
500	62.1
630	61.9
800	63.2
1 000	64.8
1 250	66.9
1 600	68.1
2 000	64.8
2 500	57.4
3 150	55.7
4 000	58.1
5 000	62.4
6 300	
8 000	
10 000	



----- Curve of reference values (ISO 717-1)

Rating according to BS EN ISO 717-1:1997	<b>R<sub>w</sub> (C;C<sub>tr</sub>) = 61 (-2;-5) dB</b>		
	<b>Max dev. 9.3 dB at 3 150 Hz</b>		
Evaluation based on laboratory measurement results obtained by an engineering method:	C <sub>50-3150</sub> = <b>-8 dB</b>	C <sub>50-5000</sub> = <b>-7 dB</b>	C <sub>100-5000</sub> = <b>-2 dB</b>
	C <sub>tr,50-3150</sub> = <b>-20 dB</b>	C <sub>tr,50-5000</sub> = <b>-20 dB</b>	C <sub>tr,100-5000</sub> = <b>-5 dB</b>

Customer: **British Gypsum Ltd.**

BTC 11885A: Page 7 of 9



No. 0296

LABORATORY AIRBORNE SOUND INSULATION TEST - BS EN ISO 140-3:1995

Test Code: **H11885A**

Test Date: **20/02/02**

Specimen Area, S = **8.64** m<sup>2</sup>

	Room T2	Room T1
Room Volume, m <sup>3</sup> :	<b>98</b>	<b>62</b>
Temperature, deg.C:	<b>14.8</b>	<b>16.3</b>
Rel. Humidity, %RH:	<b>56.4</b>	<b>45.1</b>

Freq Hz	Test Room T2 to Test Room T1						R dB	U.Dev. dB	R 1/1Oct dB
	Source dB	Rec. (uc) dB	Bgrnd dB	Rec. (corr) dB	Rev.time Sec	Corr. dB			
50	59.6	40.4	27.1	<b>40.2</b>	0.65	-2.5	<b>16.9</b>		
63	64.5	33.1	17.4	33.1	0.77	-1.7	<b>29.7</b>		21.1
80	67.4	38.0	14.3	38.0	0.73	-2.0	<b>27.4</b>		
100	75.0	32.2	18.6	<b>32.0</b>	0.99	-0.6	<b>42.4</b>		
125	79.8	35.2	14.2	35.2	1.21	0.2	<b>44.8</b>	0.2	44.0
160	86.3	40.3	19.2	40.3	0.97	-0.7	<b>45.3</b>	2.7	
200	92.7	43.0	21.8	43.0	1.28	0.5	<b>50.2</b>	0.8	
250	95.5	45.1	16.0	45.1	1.26	0.4	<b>50.8</b>	3.2	51.3
315	95.5	41.5	13.6	41.5	1.05	-0.4	<b>53.6</b>	3.4	
400	93.6	34.5	15.5	34.5	1.11	-0.1	<b>59.0</b>	1.0	
500	91.4	29.4	12.8	29.4	1.17	0.1	<b>62.1</b>		60.8
630	90.3	28.6	9.3	28.6	1.21	0.2	<b>61.9</b>	0.1	
800	90.7	28.1	7.7	28.1	1.31	0.6	<b>63.2</b>		
1 000	90.4	26.5	9.2	26.5	1.42	0.9	<b>64.8</b>		64.7
1 250	91.4	25.7	6.8	25.7	1.50	1.2	<b>66.9</b>		
1 600	94.1	27.1	6.9	27.1	1.47	1.1	<b>68.1</b>		
2 000	95.5	31.9	6.7	31.9	1.51	1.2	<b>64.8</b>	0.2	61.1
2 500	93.7	37.2	5.3	37.2	1.40	0.9	<b>57.4</b>	7.6	
3 150	92.8	37.6	6.5	37.6	1.30	0.5	<b>55.7</b>	9.3	
4 000	91.8	34.3	10.8	34.3	1.31	0.6	<b>58.1</b>		57.9
5 000	90.3	28.8	18.9	<b>28.3</b>	1.26	0.4	<b>62.4</b>		
6 300									
8 000									
10 000									

<b>Single Figure Ratings</b>	<b>Rw</b>	<b>C</b>	<b>Ctr</b>	<b>Total U. Dev., dB</b>	<b>28.5</b>
<b>BS EN ISO 717-1: 1997</b>	<b>dB</b>	<b>dB</b>	<b>dB</b>		
	<b>61</b>	<b>-2</b>	<b>-5</b>		
	<b>(100-5000)</b>	<b>-2</b>	<b>-5</b>		
<b>Background Corrected</b>					
	<b>(50-3150)</b>	<b>-8</b>	<b>-20</b>		
	<b>(50-5000)</b>	<b>-7</b>	<b>-20</b>		

Customer: **British Gypsum Ltd.**





## APPENDIX B: TEST METHOD AND CONDITIONS

The source room (T2) was treated with six perspex diffusers of approximately 900mm x 1220mm. An omni-directional loudspeaker sound source is placed near a back corner of the source room (T2), rotating at 1 rpm and at least 0.7m from any room boundary to satisfy Annex C of BS EN ISO 140-3: 1995. A stationary loudspeaker sound source is placed in the corner of the receiving room (T1) opposite the test specimen.

The average sound pressure level in each 1/3 octave band was measured using a rotating microphone boom, positioned such that the minimum distance between microphone and sound source was 1m, and between microphone and room boundaries 0.7m. The rotating microphone has a sweep radius of at least 1m and was inclined in relation to the boundaries at an angle of at least 30° to the horizontal. The microphone has a traverse time of 32 seconds, and the sound pressure levels were averaged over 64 seconds which is equivalent to two complete sweeps of the microphone boom.

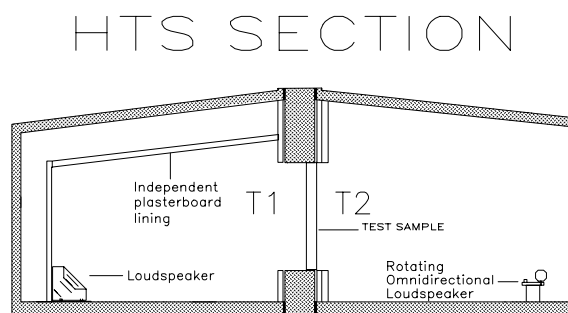
The equivalent absorption area of the receiving room is determined by producing the arithmetic average of six reverberation times and applying this to the Sabine formula.

The test specimen is installed in the aperture so that it finishes flush with the last timber in room T2 side to eliminate indirect transmission between rooms. The specimen is not installed so that the aperture depth ratio 2:1 is met as recommended in section 5.2.1 of BS EN ISO 140-3:1995. Laboratory tests have shown to prove the insignificance of this installation position on the test results.

The laboratory limit for measurement due to flanking is (BTC H 3306A)

Freq Hz	50	63	80	100	125	160	200	250	315	400	500	630	800	1000	1250	1600	2000	2500	3150	4000	5000
R'max	32	44	39	55	56	59	64	63	70	77	84	88	91	92	94	97	96	98	96	90	87

Figure 2 below shows flanking and isolation treatments in the test chamber.



**Figure 2.** Test Chamber Layout