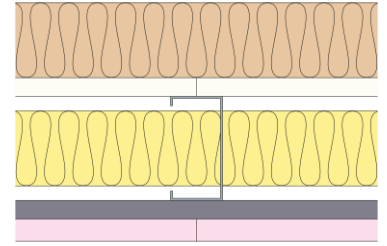


Technical Specification

This document provides guidance on how to achieve performance and warranty requirements by exclusively using British Gypsum products or system specifications.

GypLyner Xternal T106028 (EN)

A non-loadbearing external wall construction including a 20mm deflection head with an inner layer of Glasroc X Sheathing Board 12.5mm and outer layer of 50mm Isover Polterm Max Plus insulation to external side an inner layer of Gyproc Habito 12.5mm and outer layer Gyproc FireLine 15mm to the internal side of 70mm SFS framework. 50mm Isover Acoustic Partition Roll (APR 1200) in the cavity. For heights up to 4000mm.



Head design

Head channel	75mm Hadley SFS Channel
SFS channel (75mm x 70mm x 2.0mm) suitably fixed to soffit at 600mm centres.	
Deflection allowance	For vertical movement up to 20mm. To be determined by a Structural Engineer.
Dropped soffit	For principles of deflection head construction refer to detail ST-225-ZZL1-01
Clips	SFS Hadley Slip Klip
Clip fixing	British Gypsum Wafer Head Jack-Point Screws 13mm

Fix the slip klip component to the head channel with four British Gypsum Wafer Head Jack-Point Screws 13mm.

Framework

Stud	70mm Hadley SFS Stud
Stud centres - Max (mm)	600
SFS studs (70mm x 50mm x 1.2mm) should be cut 25mm short and engaged into a slip klip.	
Abutments and openings	70mm Hadley SFS Stud
SFS stud (70mm x 50mm x 1.2mm) suitably fixed to structure at 600mm centres.	
Base channel	75mm Hadley SFS Channel
SFS channel (75mm x 38mm x 1.2mm) suitably fixed to floor at 600mm centres. All SFS components are supplied direct from Hadley Group.	

Insulation

Insulation, Layer 1	50mm Isover Acoustic Partition Roll (APR 1200)
---------------------	-------------------------------------------------------

Board and fixings

Board side 1, Layer 1	Gyproc Habito 12.5mm	Screws side 1, Layer 1	British Gypsum Jack-Point Screws 25mm
Board side 1, Layer 2	Gyproc FireLine 15mm	Screws side 1, Layer 2	British Gypsum Jack-Point Screws 41mm
Board side 2, Layer 1	Glasroc X Sheathing Board 12.5mm	Screws side 2, Layer 1	Glasroc X Screws 25mm

Board side 1, Layer 1 (inner), fix securely to SFS supports around the perimeter of the board at maximum 300mm centres except the head channel; Board side 1, Layer 2 (outer), fix securely to all SFS supports around the perimeter of the board and intermediate stud positions at maximum 300mm centres except the head channel. The uppermost board fixings are positioned 130mm below the structural soffit through board in to fixing strap. Board side 2, Layer 1, fix securely to all SFS supports around the perimeter of the board and intermediate stud positions at maximum 300mm centres except the head channel. The uppermost board fixings are positioned 130mm below the structural soffit. External corners reduce fixings to 200mm. All joints staggered between layers. First fixing of the external board into the stud should be 100mm above the floor channel leg and then fixed working up the stud (board side 2). The first fixing into the stud for the inner layer on the internal face should be 100mm above the floor channel leg (board side 1). Fix working from the centre of each board on the internal side (board side 1). Position screws not less than 13mm from cut edges and 10mm from bound edges of boards. Set screw heads flush with plasterboard surface; do not break gypsum core.

Fixing strap	Gyproframe GFS1 Fixing Strap
Used to support horizontal board joints to internal side and enable board screw fixing at 300mm centres.	
Sealant	Gyproc Sealant
On the internal side, locate sealant at junctions with adjoining structure and other air paths. Apply as a continuous bead to clean, dry, dust-free surfaces, leaving no gaps. After application of sealant, bulk fill gaps between floor and underside of plasterboard using Gyproc joint compound.	

External board joints	Glasroc X Sealant
Apply a continuous 6mm bead of Glasroc X Sealant along vertical and horizontal edges of board where boards will abut each other. Push the sheathing board up to the previous board ensuring the sealant 'mushroomed' out fully sealing the joint.	

External Insulation

External insulation, Layer 1	50mm Isover Polterm Max Plus
External insulation must be correctly installed to ensure the performance of our system. Attach Isover Polterm Max Plus insulation 1200 x 600mm in a horizontal orientation and brick stagger with one fixing through the centre of each slab into the SFS framework. Add two further fixings 400mm apart up the slab's vertical edge into the SFS framework. Steel fixings are stainless steel self-drilling insulation fastener screw 6.3mm diameter by others with length sufficient to ensure minimum 10mm threaded penetration of the fixing into the SFS framework. Insulation is retained with stress plate square retaining washers, 70mm x 70mm, 6.8mm diameter central hole by others.	

Finish coat

To achieve the specified performances, the system should be finished using either one of our Thistle or ThistlePro plasters, or Gyproc jointing products to the internal face. See the product range guides on the British Gypsum website for more information.

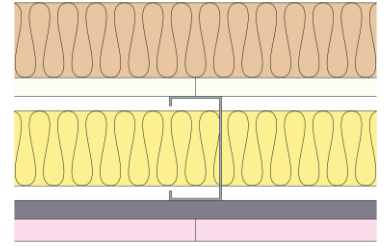
Technical Specification

This document provides guidance on how to achieve performance and warranty requirements by exclusively using British Gypsum products or system specifications.

GypLyner Xternal

T106028 (EN)

A non-loadbearing external wall construction including a 20mm deflection head with an inner layer of Glasroc X Sheathing Board 12.5mm and outer layer of 50mm Isover Polterm Max Plus insulation to external side an inner layer of Gyproc Habito 12.5mm and outer layer Gyproc FireLine 15mm to the internal side of 70mm SFS framework. 50mm Isover Acoustic Partition Roll (APR 1200) in the cavity. For heights up to 4000mm.



System performance

Please read performance data with any associated standards.

Fire integrity (mins)	60
Maximum height (mm)	4000

Fire insulation (mins)	60
------------------------	-----------

The maximum heights quoted are limited by the fire state field of application or by limiting deflection of L/240 at 200 Pa, whichever is the lower of the two.

Approx. weight (kg/m ²)	43
Loadbearing	No

Standards

These standards relate to the above performance data.

BS EN 1364-1, Fire resistance tests for non-loadbearing elements - Walls.

Further information

SpecSure® system performance warranty confirms that British Gypsum proprietary systems will perform as specified for the lifetime of the building. The **SpecSure®** warranty requires that all components are specified in full and constructed in accordance with British Gypsum's installation guidance. For more details see the British Gypsum website. Always check with the design team before making any changes to the chosen specification, ensuring appropriate substantiation is sought to confirm that the solution still meets all required project performances.