

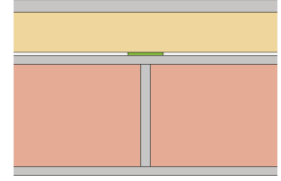
# Technical Specification

This document provides guidance on how to achieve performance and warranty requirements by exclusively using British Gypsum products or system specifications.

DriLyner Dab

## RF-PIR (B) (EN)

One layer of Gyproc ThermaLine PIR 53mm on Gyproc Sealant (3mm nominal cavity) on existing plastered walls, level brick, block or fair faced concrete.



## Background

|            |   |
|------------|---|
| Background | Existing plastered walls or level brick, block or fair-faced concrete |
| Parge coat | <b>Gyproc Soundcoat Plus</b>  |

If required apply a parge coat at least 6mm thick to the entire surface of the background ensuring all cracked or unfilled joints are covered. Allow to set before following on with plasterboard installation.

## Fixing method

|               |                       |
|---------------|-----------------------|
| Fixing method | <b>Gyproc Sealant</b> |
|---------------|-----------------------|

Apply 25mm dia. blobs of Sealant to the background or back of the thermal laminate in five vertical rows at 300mm centres in each row. Ensure that the blobs adjacent to a board joint are approximately 25mm in from the edge to avoid bridging the joint.

|                          |   |
|--------------------------|---|
| Cavity/Offset - Min (mm) | 3 |
|--------------------------|---|

## Board and fixings

|                       |  |
|-----------------------|--|
| Board side 1, Layer 1 | <b>Gyproc ThermaLine PIR 53mm</b>          |
| Secondary fixing      | <b>British Gypsum Nailable Plugs 100mm</b> |

Fix thermal laminates to the background using two nailable plugs per laminate located at mid-point in height, 15mm from each vertical edge. Ensure plugs penetrate at least 25mm into the background excluding the thickness of any existing plaster finishes. Drive nail heads slightly below the paper surface; do not break paper or gypsum core. For thermal laminates to receive ceramic finishes, use a total of nine nailable plugs per board.

## Finish coat

The system should be finished using either one of our Thistle or ThistlePro plasters, or Gyproc jointing products. See the product range guides on the British Gypsum website for more information.

## Further information

**SpecSure®** system performance warranty confirms that British Gypsum proprietary systems will perform as specified for the lifetime of the building. The **SpecSure®** warranty requires that all components are specified in full and constructed in accordance with British Gypsum's installation guidance. For more details see the British Gypsum website. Always check with the design team before making any changes to the chosen specification, ensuring appropriate substantiation is sought to confirm that the solution still meets all required project performances.