

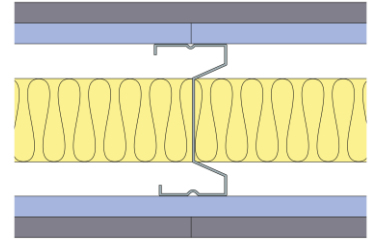
Technical Specification

This document provides guidance on how to achieve performance and warranty requirements by exclusively using British Gypsum products or system specifications.

GypWall Single Frame Enhanced

L206A005 (EN)

Inner layer of Gyproc SoundBloc 12.5mm with an outer layer of Gyproc Habito 12.5mm each side of Gyproframe 92 AS 50 AcouStuds at 600mm centres. 50mm Isover Acoustic Partition Roll (APR 1200) in the cavity. For heights up to 3000mm.



Head design

Head channel	Gyproframe 94 FEC 50 Folded Edge Standard Floor & Ceiling Channel
Gyproframe channel suitably fixed to soffit at 600mm centres in two lines staggered by 300mm.	
Deflection allowance	Vertical deflection only. To be determined by a Structural Engineer.
Dropped soffit	For principles of deflection head construction refer to detail ST-122-Z3L2-09.

Framework

Stud	Gyproframe 92 AS 50 AcouStud
Stud centres - Max (mm)	600
Abutments and openings	Gyproframe 92 S 60 'C' Stud
Gyproframe 'C' stud suitably fixed to structure at 600mm centres in two lines staggered by 300mm.	
Base channel	Gyproframe 94 FEC 50 Folded Edge Standard Floor & Ceiling Channel
Gyproframe channel suitably fixed to floor at 600mm centres in two lines staggered by 300mm.	

Insulation

Insulation, Layer 1	50mm Isover Acoustic Partition Roll (APR 1200)
---------------------	---

Board and fixings

Board side 1, Layer 1	Gyproc SoundBloc 12.5mm	Screws side 1, Layer 1	British Gypsum Drywall Screws 25mm
Board side 1, Layer 2	Gyproc Habito 12.5mm	Screws side 1, Layer 2	British Gypsum High Performance Screws 35mm
Board side 2, Layer 1	Gyproc SoundBloc 12.5mm	Screws side 2, Layer 1	British Gypsum Drywall Screws 25mm
Board side 2, Layer 2	Gyproc Habito 12.5mm	Screws side 2, Layer 2	British Gypsum High Performance Screws 35mm

Board layer 1 (inner), fix securely to Gyproframe metal supports around the perimeter of the board at maximum 300mm centres; Board layer 2 (outer), fix securely to all Gyproframe metal supports around the perimeter of the board and intermediate stud positions at maximum 300mm centres. External corners reduce fixings to 200mm. All joints staggered between layers. Fix working from the centre of each board. Position screws not less than 13mm from cut edges and 10mm from bound edges of boards. Set screw heads flush with plasterboard surface; do not break paper or gypsum core.

Fixing strap	Gyproframe GFS1 Fixing Strap
Used to support horizontal board joints in face layer of multiple layer board linings and enable board screw fixing at 300mm centres.	
Sealant	Gyproc Sealant

Locate sealant at junctions with adjoining structure and other air paths. Apply as a continuous bead to clean, dry, dust-free surfaces, leaving no gaps. After application of sealant, bulk fill gaps between floor and underside of plasterboard using Gyproc joint compound.

Finish coat

To achieve the specified performances, the system should be finished using Gyproc jointing products. See the product range guides on the British Gypsum website for more information.

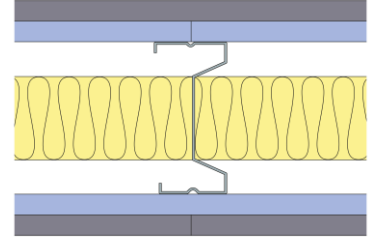
Technical Specification

This document provides guidance on how to achieve performance and warranty requirements by exclusively using British Gypsum products or system specifications.

GypWall Single Frame Enhanced

L206A005 (EN)

Inner layer of Gyproc SoundBloc 12.5mm with an outer layer of Gyproc Habito 12.5mm each side of Gypframe 92 AS 50 AcouStuds at 600mm centres. 50mm Isover Acoustic Partition Roll (APR 1200) in the cavity. For heights up to 3000mm.



System performance

Please read performance data with any associated standards.

Fire integrity (mins)	90
Maximum height (mm)	3000

Fire insulation (mins)	90
------------------------	-----------

The maximum heights quoted are limited by the fire state field of application or by limiting deflection of L/240 at 200 Pa, whichever is the lower of the two.

Sound insulation (Airborne) R_w (dB)	57
Duty rating	Severe
Partition thickness (mm)	144
Approx. weight (kg/m ²)	48

Sound insulation (Airborne) $R_w + C_{tr}$ (dB)	50
---	-----------

Standards

These standards relate to the above performance data.

BS EN 1364-1, Fire resistance tests for non-loadbearing elements - Walls.

BS 5234-2, Specification for performance requirements for strength and robustness including methods of test.

BS EN ISO 10140-2, Acoustics - Laboratory measurement of sound insulation of building elements. Measurement of airborne sound insulation.

Test reports

These test reports relate to the above performance data.

Fire Resistance Test Report	BTC 20794FA
Partition Duty Test Report	BTC 20786LC
Sound Insulation Test Report	BTC 20730A

Further information

SpecSure® system performance warranty confirms that British Gypsum proprietary systems will perform as specified for the lifetime of the building. The **SpecSure®** warranty requires that all components are specified in full and constructed in accordance with British Gypsum's installation guidance. For more details see the British Gypsum website. Always check with the design team before making any changes to the chosen specification, ensuring appropriate substantiation is sought to confirm that the solution still meets all required project performances.