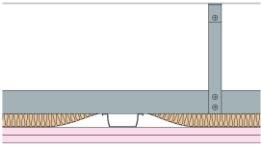


Technical Specification

This document provides guidance on how to achieve performance and warranty requirements by exclusively using British Gypsum products or system specifications.

GypCeiling MF
C106046 (EN)

GypCeiling MF suspended ceiling fixed to structure and lined with two layers of Gyproc FireLine 12.5mm with 25mm stone mineral wool slabs (100kg/m3) laid over Gypframe MF5 Ceiling sections.



Background

Structural background	Floor or Roof Cavity
-----------------------	----------------------

Framework

Soffit connection	Gypframe MF12 Soffit Cleat		
Suspension type	Gypframe MF8 Strap Hanger	Suspension centres - Max (mm)	1200
Suspension type (alternative)	Gypframe FEA1 Steel Angle		

Steel angle section is the preferred suspension option when a plaster finish is specified; it can be used up to 5600mm, alternatively Strap hanger can be used for suspension up to 1000mm.

Suspension fixing	British Gypsum Drywall Screws 35mm British Gypsum Wafer Head Jack-Point Screws 13mm
-------------------	--

Lower end of suspension fixed to primary framework using two wafer head screws and upper end of suspension secured to soffit via soffit cleat / nut and bolt. If plenum depth greater than 2900mm use two angle sections overlapped by 200mm and fixed together using three British Gypsum Wafer Head Drywall Screws 13mm.

Primary framework	Gypframe MF7 Primary Support Channel	Primary framework centres - Max (mm)	1200
Secondary framework	Gypframe MF5 Ceiling Section	Secondary framework centres - Max (mm)	450
Framework fixing	British Gypsum Wafer Head Jack-Point Screws 13mm		
Framework fixing (alternative)	Gypframe MF9 Connecting Clip		

Ceiling sections fixed to primary framework using wafer head screws or clips.

Perimeter framing	Gypframe MF6 Perimeter Channel
-------------------	--------------------------------

Perimeter channel suitably fixed to background at 600mm centres.

Insulation

Insulation, Layer 1	25mm stone mineral wool (100kg/m3)
---------------------	------------------------------------

Board and fixings

Ceiling board, Layer 1	Gyproc FireLine 12.5mm	Ceiling screws, Layer 1	British Gypsum Drywall Screws 25mm
Ceiling board, Layer 2	Gyproc FireLine 12.5mm	Ceiling screws, Layer 2	British Gypsum Drywall Screws 35mm

Fix ceiling boards securely to all supports at maximum 230mm centres (reduced to 150mm at board ends and at ceiling perimeters). All joints staggered between layers. Fix working from the centre of each board. Position screws not less than 13mm from cut edges and 10mm from bound edges of boards. Set screw heads flush with plasterboard surface; do not break paper or gypsum core.

Sealant	Gyproc Sealant
---------	----------------

Locate sealant at junctions with adjoining structure and other air paths. Apply as a continuous bead to clean, dry, dust-free surfaces, leaving no gaps.

Finish coat

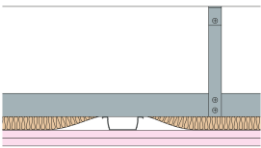
To achieve the specified performances, the system should be finished using either one of our Thistle or ThistlePro plasters, or Gyproc jointing products. See the product range guides on the British Gypsum website for more information.

Technical Specification

This document provides guidance on how to achieve performance and warranty requirements by exclusively using British Gypsum products or system specifications.

GypCeiling MF
C106046 (EN)

GypCeiling MF suspended ceiling fixed to structure and lined with two layers of Gyproc FireLine 12.5mm with 25mm stone mineral wool slabs (100kg/m3) laid over Gypframe MF5 Ceiling sections.



System performance

Please read performance data with any associated standards.

Fire integrity (mins)	30
Minimum cavity / plenum (mm)	100
Maximum ceiling load (kg/m2)	30
Approx. weight (kg/m2)	22

Fire insulation (mins)	30
Maximum cavity / plenum (mm)	5600

Standards

These standards relate to the above performance data.

BS EN 1364-2, Fire resistance tests for non-loadbearing elements - Ceilings.

Further information

SpecSure® system performance warranty confirms that British Gypsum proprietary systems will perform as specified for the lifetime of the building. The **SpecSure®** warranty requires that all components are specified in full and constructed in accordance with British Gypsum's installation guidance. For more details see the British Gypsum website. Always check with the design team before making any changes to the chosen specification, ensuring appropriate substantiation is sought to confirm that the solution still meets all required project performances.