

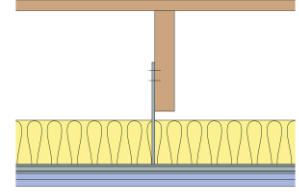
Technical Specification

This document provides guidance on how to achieve performance and warranty requirements by exclusively using British Gypsum products or system specifications.

GypCeiling Lining

C106020 (A) (EN)

21mm T&G wood flooring on 38 x 195mm solid timber joists at 600mm centres. GypCeiling Lining suspended ceiling fixed to underside of joists with Gypframe GL1 Lining Channels at 450mm maximum centres and lined with two layers of Gyproc SoundBloc 15mm and 100mm Isover Spacesaver Ready-Cut in the cavity.



Background

Structural background	21mm T & G Floor Boarding, 38 x 195mm Solid Joists @ 600mm centres
-----------------------	--

Framework

Suspension type	Gypframe GL6 Timber Connector	Suspension centres - Max (mm)	600
Suspension fixing	British Gypsum Drywall Screws 35mm		

The timber connector is fixed to the side of the joist using two British Gypsum Drywall Screws 35mm. The max. cavity between the underside of the joists and the rear face of the board should be no greater than 120mm.

Primary framework	Gypframe GL1 Lining Channel	Primary framework centres - Max (mm)	450
Channel connector	Gypframe GL3 Channel Connector		

Perimeter channel/track	Gypframe GL8 Track		
-------------------------	---------------------------	--	--

Perimeter track suitably fixed to background at 600mm centres.

Insulation

Insulation, Layer 1	100mm Isover Spacesaver Ready-Cut		
---------------------	--	--	--

Board and fixings

Ceiling board, Layer 1	Gyproc SoundBloc 15mm	Ceiling screws, Layer 1	British Gypsum Drywall Screws 25mm
Ceiling board, Layer 2	Gyproc SoundBloc 15mm	Ceiling screws, Layer 2	British Gypsum Drywall Screws 40mm

Fix ceiling boards securely to all supports at maximum 230mm centres (reduced to 150mm at board ends and at ceiling perimeters). All joints staggered between layers. Fix working from the centre of each board. Position screws not less than 13mm from cut edges and 10mm from bound edges of boards. Set screw heads flush with plasterboard surface; do not break paper or gypsum core.

Sealant	Gyproc Sealant		
---------	-----------------------	--	--

Locate sealant at junctions with adjoining structure and other air paths. Apply as a continuous bead to clean, dry, dust-free surfaces, leaving no gaps.

Finish coat

To achieve the specified performances, the system should be finished using either one of our Thistle or ThistlePro plasters, or Gyproc jointing products. See the product range guides on the British Gypsum website for more information.

System performance

Please read performance data with any associated standards.

Fire integrity (mins)	60
Sound insulation (Airborne) Rw (dB)	54
Sound insulation (Impact) Lnw (dB)	65
Minimum cavity / plenum (mm)	100

Fire insulation (mins)	60
------------------------	-----------

Maximum cavity / plenum (mm)	120
------------------------------	------------

Standards

These standards relate to the above performance data.

BS 2750-6, Measurement of sound insulation in buildings and of building elements. Laboratory measurements of impact sound insulation of floors.

BS 2750-3, Measurement of sound insulation in buildings and of building elements. Laboratory measurements of airborne sound insulation of building elements.

BS EN 1365-2, Fire resistance tests for loadbearing elements - Floors and roofs.

Further information

SpecSure® system performance warranty confirms that British Gypsum proprietary systems will perform as specified for the lifetime of the building. The **SpecSure®** warranty requires that all components are specified in full and constructed in accordance with British Gypsum's installation guidance. For more details see the British Gypsum website. Always check with the design team before making any changes to the chosen specification, ensuring appropriate substantiation is sought to confirm that the solution still meets all required project performances.

Technical Support Team | british-gypsum.com

This Technical Specification stipulates all British Gypsum products used within a system. These must be used to achieve the stated performance and the **SpecSure®** system warranty.

This document is provided to customers free and the information shown is subject to the accuracy of the information provided to us when the document was originally requested. The document should therefore be approved by the project design and management authority before use to ensure it meets their specific project requirements. It should also be read in conjunction with current literature available at british-gypsum.com. This document is valid at the time of issue, please check with British Gypsum for the latest version. No duty of care is owed to the recipient or any third party and British Gypsum excludes all liability in respect of the information shown to the fullest extent possible save where death or personal injury is caused due to British Gypsum's negligence or for fraud.