

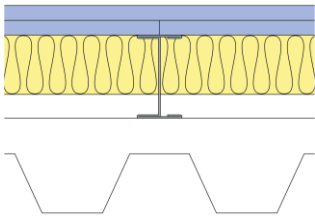
Technical Specification

This document provides guidance on how to achieve performance and warranty requirements by exclusively using British Gypsum products or system specifications.

GypLynr Independent

B216006 (D) (EN)

Two layers of Gyproc SoundBloc 15mm to one side of Gypframe 70 I 70 'I' Stud framework with 50mm Isover Steel Frame Infill Batts between studs forming an independent lining to structural steel columns, in association with external steel cladding (0.6mm). For heights up to 4000mm.



Background

Background	Steel Clad External Wall
------------	--------------------------

Head design

Head channel	Gypframe 72 FEC 50 Folded Edge Standard Floor & Ceiling Channel
--------------	---

Gypframe channel suitably fixed to soffit at 600mm centres.

Deflection allowance	Vertical deflection only. To be determined by a Structural Engineer.
----------------------	--

Framework

Stud	Gypframe 70 I 70 'I' Stud
Stud centres - Max (mm)	600
Abutments and openings	Gypframe 70 S 50 'C' Stud

Gypframe 'C' stud suitably fixed to structure at 600mm centres.

Base channel	Gypframe 72 FEC 50 Folded Edge Standard Floor & Ceiling Channel
--------------	---

Gypframe channel suitably fixed to floor at 600mm centres.

Insulation

Insulation, Layer 1	50mm Isover Steel Frame Infill Batt
---------------------	-------------------------------------

Board and fixings

Board side 1, Layer 1	Gyproc SoundBloc 15mm	Screws side 1, Layer 1	British Gypsum Jack-Point Screws 25mm
Board side 1, Layer 2	Gyproc SoundBloc 15mm	Screws side 1, Layer 2	British Gypsum Jack-Point Screws 41mm

Board layer 1 (inner), fix securely to Gypframe metal supports around the perimeter of the board at maximum 300mm centres; Board layer 2 (outer), fix securely to all Gypframe metal supports around the perimeter of the board and intermediate stud positions at maximum 300mm centres. External corners reduce fixings to 200mm. Drywall screws can be used for fixing boards to metal profiles with a thickness of 0.8mm or less (excluding 'I' studs). All joints staggered between layers. Fix working from the centre of each board. Position screws not less than 13mm from cut edges and 10mm from bound edges of boards. Set screw heads flush with plasterboard surface; do not break paper or gypsum core.

Fixing strap	Gypframe GFS1 Fixing Strap
--------------	----------------------------

Used to support horizontal board joints in face layer of multiple layer board linings and enable board screw fixing at 300mm centres.

Sealant	Gyproc Sealant
---------	----------------

Locate sealant at junctions with adjoining structure and other air paths. Apply as a continuous bead to clean, dry, dust-free surfaces, leaving no gaps. After application of sealant, bulk fill gaps between floor and underside of plasterboard using Gyproc jointing compound.

Finish coat

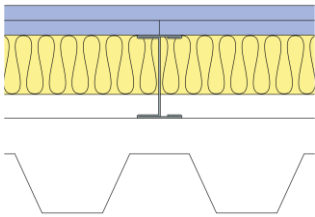
To achieve the specified performances, the system should be finished using either one of our Thistle or ThistlePro plasters, or Gyproc jointing products. See the product range guides on the British Gypsum website for more information.

Technical Specification

This document provides guidance on how to achieve performance and warranty requirements by exclusively using British Gypsum products or system specifications.

GypLyner Independent
B216006 (D) (EN)

Two layers of Gyproc SoundBloc 15mm to one side of Gypframe 70 l 70 'I' Stud framework with 50mm Isover Steel Frame Infill Batts between studs forming an independent lining to structural steel columns, in association with external steel cladding (0.6mm). For heights up to 4000mm.



System performance

Please read performance data with any associated standards.

Fire integrity (mins)	30
Maximum height (mm)	4000

Fire insulation (mins)	30
------------------------	----

The maximum heights quoted are limited by the fire state field of application or by limiting deflection of L/240 at 200 Pa, whichever is the lower of the two.

Duty rating	Severe
Minimum cavity / offset (mm)	30

The minimum cavity/offset is recommended to avoid bridging between the background and metal studs over the lining system height.

Approx. weight (kg/m2)	32
------------------------	----

Standards

These standards relate to the above performance data.

BS 5234-2, Specification for performance requirements for strength and robustness including methods of test.

BS EN 1364-1, Fire resistance tests for non-loadbearing elements - Walls.

Test reports

These test reports relate to the above performance data.

Fire Resistance Test Report	BTC 21131F
Partition Duty Test Report	BTC 317LC

Further information

SpecSure® system performance warranty confirms that British Gypsum proprietary systems will perform as specified for the lifetime of the building. The **SpecSure®** warranty requires that all components are specified in full and constructed in accordance with British Gypsum's installation guidance. For more details see the British Gypsum website. Always check with the design team before making any changes to the chosen specification, ensuring appropriate substantiation is sought to confirm that the solution still meets all required project performances.