

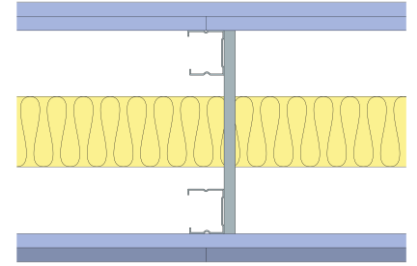
Technical Specification

This document provides guidance on how to achieve performance and warranty requirements by exclusively using British Gypsum products or system specifications.

GypWall Twin Frame Braced

A216011 (B) MR1 (EN)

Two layers of Gyproc SoundBloc 15mm one side and an inner layer of Gyproc SoundBloc 15mm and an outer layer of Gyproc SoundBloc MR 15mm the other side fixed to outside faces of two Gyproframe 48 S 50 'C' Stud frameworks with studs at 600mm centres, cross braced using Gyproframe 99 FC 50 Fixing Channel at 1200mm centres. 75mm Isover Acoustic Slab in the cavity. For heights up to 5000mm.



Head design

| | |
|--------------|--|
| Head channel | Gyproframe 50 DC 60 Deep Flange Floor & Ceiling Channel |
|--------------|--|

Two rows of Gyproframe channel suitably fixed to soffit at 600mm centres.

| | |
|----------------------|--|
| Deflection allowance | Vertical deflection only. To be determined by a Structural Engineer. |
| Dropped soffit | For principles of deflection head construction refer to detail ST-125-Z1L2-09. |

Framework

| | |
|-------------------------|------------------------------------|
| Stud | Gyproframe 48 S 50 'C' Stud |
| Stud centres - Max (mm) | 600 |

Two rows of Gyproframe studs arranged in pairs.

| | |
|------------------------|------------------------------------|
| Abutments and openings | Gyproframe 48 S 50 'C' Stud |
|------------------------|------------------------------------|

Two rows of Gyproframe 'C' stud suitably fixed to structure at 600mm centres.

| | | | |
|----------------|--|----------------------------|------|
| Bracing | Gyproframe 99 FC 50 Fixing Channel | Bracing Centres - Max (mm) | 1200 |
| Bracing fixing | British Gypsum Wafer Head Drywall Screws 13mm | | |

For heights up to 2400mm - one brace at mid-point for each stud pair; for heights greater than 2400mm - one brace half staggered for each stud pair, fixed with two wafer head screws per stud.

| | |
|--------------|--|
| Base channel | Gyproframe 50 DC 60 Deep Flange Floor & Ceiling Channel |
|--------------|--|

Two rows of Gyproframe channel suitably fixed to floor at 600mm centres.

Insulation

| | |
|---------------------|----------------------------------|
| Insulation, Layer 1 | 75mm Isover Acoustic Slab |
|---------------------|----------------------------------|

Board and fixings

| | | | |
|-----------------------|---------------------------------|------------------------|---|
| Board side 1, Layer 1 | Gyproc SoundBloc 15mm | Screws side 1, Layer 1 | British Gypsum Drywall Screws 25mm |
| Board side 1, Layer 2 | Gyproc SoundBloc 15mm | Screws side 1, Layer 2 | British Gypsum Drywall Screws 40mm |
| Board side 2, Layer 1 | Gyproc SoundBloc 15mm | Screws side 2, Layer 1 | British Gypsum Drywall Screws 25mm |
| Board side 2, Layer 2 | Gyproc SoundBloc MR 15mm | Screws side 2, Layer 2 | British Gypsum Drywall Screws 40mm |

Board layer 1 (Inner), fix securely to Gyproframe metal supports around the perimeter of the board at maximum 300mm centres; Board layer 2 (outer), fix securely to all Gyproframe metal supports around the perimeter of the board and intermediate stud positions at maximum 300mm centres. External corners reduce fixings to 200mm. All joints staggered between layers. Fix working from the centre of each board. Position screws not less than 13mm from cut edges and 10mm from bound edges of boards. Set screw heads flush with plasterboard surface; do not break paper or gypsum core.

| | |
|--------------|-------------------------------------|
| Fixing strap | Gyproframe GFS1 Fixing Strap |
|--------------|-------------------------------------|

Used to support horizontal board joints in face layer of multiple layer board linings and enable board screw fixing at 300mm centres.

| | |
|---------|-----------------------|
| Sealant | Gyproc Sealant |
|---------|-----------------------|

Locate sealant at junctions with adjoining structure and other air paths. Apply as a continuous bead to clean, dry, dust-free surfaces, leaving no gaps. After application of sealant, bulk fill gaps between floor and underside of plasterboard using Gyproc joint compound.

Finish coat

To achieve the specified performances, the system should be finished using either one of our Thistle or ThistlePro plasters, or Gyproc jointing products. See the product range guides on the British Gypsum website for more information. For further guidance on skimming moisture resistant grade boards see the White Book - Finishes section.

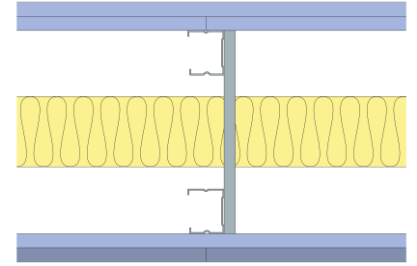
Technical Specification

This document provides guidance on how to achieve performance and warranty requirements by exclusively using British Gypsum products or system specifications.

GypWall Twin Frame Braced

A216011 (B) MR1 (EN)

Two layers of Gyproc SoundBloc 15mm one side and an inner layer of Gyproc SoundBloc 15mm and an outer layer of Gyproc SoundBloc MR 15mm the other side fixed to outside faces of two Gypframe 48 S 50 'C' Stud frameworks with studs at 600mm centres, cross braced using Gypframe 99 FC 50 Fixing Channel at 1200mm centres. 75mm Isover Acoustic Slab in the cavity. For heights up to 5000mm.



System performance

Please read performance data with any associated standards.

| | |
|-----------------------|-------------|
| Fire integrity (mins) | 90 |
| Maximum height (mm) | 5000 |

| | |
|------------------------|-----------|
| Fire insulation (mins) | 90 |
|------------------------|-----------|

The maximum heights quoted are limited by the fire state field of application or by limiting deflection of L/240 at 200 Pa, whichever is the lower of the two.

| | |
|--|---------------|
| Sound insulation (Airborne) R_w (dB) | 63 |
| Duty rating | Severe |
| Partition thickness (mm) | 250 |
| Approx. weight (kg/m ²) | 55 |

| | |
|---|-----------|
| Sound insulation (Airborne) $R_w + C_{tr}$ (dB) | 57 |
|---|-----------|

Standards

These standards relate to the above performance data.

BS EN 1364-1, Fire resistance tests for non-loadbearing elements - Walls.

BS 5234-2, Specification for performance requirements for strength and robustness including methods of test.

BS EN ISO 140-3, Acoustics - Measurement of sound insulation in buildings and of building elements. Laboratory measurement of airborne sound insulation of building elements.

Further information

SpecSure® system performance warranty confirms that British Gypsum proprietary systems will perform as specified for the lifetime of the building. The **SpecSure®** warranty requires that all components are specified in full and constructed in accordance with British Gypsum's installation guidance. For more details see the British Gypsum website. Always check with the design team before making any changes to the chosen specification, ensuring appropriate substantiation is sought to confirm that the solution still meets all required project performances.