

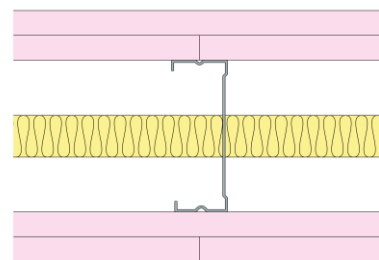
# Technical Specification

This document provides guidance on how to achieve performance and warranty requirements by exclusively using British Gypsum products or system specifications.

GypWall Single Frame

## A206274S (A) (EN)

Two layers of Gyproc FireLine 15mm each side of Gypframe 92 S 50 'C' Studs at 600mm centres. 25mm Isover Acoustic Partition Roll (APR 1200) in the cavity with 2mm Thistle MultiFinish on each side. For heights up to 4200mm.



## Head design

Head channel	<b>Gypframe 94 FEC 50 Folded Edge Standard Floor &amp; Ceiling Channel</b>
Gypframe channel suitably fixed to soffit at 600mm centres in two lines staggered by 300mm.	
Deflection allowance	Vertical deflection only. To be determined by a Structural Engineer.
Dropped soffit	For principles of deflection head construction refer to detail ST-121-Z1L2-09.

## Framework

Stud	<b>Gypframe 92 S 50 'C' Stud</b>
Stud centres - Max (mm)	600
Abutments and openings	<b>Gypframe 92 S 50 'C' Stud</b>
Gypframe 'C' stud suitably fixed to structure at 600mm centres in two lines staggered by 300mm.	
Base channel	<b>Gypframe 94 FEC 50 Folded Edge Standard Floor &amp; Ceiling Channel</b>
Gypframe channel suitably fixed to floor at 600mm centres in two lines staggered by 300mm.	

## Insulation

Insulation, Layer 1	<b>25mm Isover Acoustic Partition Roll (APR 1200)</b>
---------------------	---

## Board and fixings

Board side 1, Layer 1	<b>Gyproc FireLine 15mm</b>	Screws side 1, Layer 1	<b>British Gypsum Drywall Screws 25mm</b>
Board side 1, Layer 2	<b>Gyproc FireLine 15mm</b>	Screws side 1, Layer 2	<b>British Gypsum Drywall Screws 40mm</b>
Board side 2, Layer 1	<b>Gyproc FireLine 15mm</b>	Screws side 2, Layer 1	<b>British Gypsum Drywall Screws 25mm</b>
Board side 2, Layer 2	<b>Gyproc FireLine 15mm</b>	Screws side 2, Layer 2	<b>British Gypsum Drywall Screws 40mm</b>

Board layer 1 (inner), fix securely to Gypframe metal supports around the perimeter of the board at maximum 300mm centres; Board layer 2 (outer), fix securely to all Gypframe metal supports around the perimeter of the board and intermediate stud positions at maximum 300mm centres. External corners reduce fixings to 200mm. All joints staggered between layers. Fix working from the centre of each board. Position screws not less than 13mm from cut edges and 10mm from bound edges of boards. Set screw heads flush with plasterboard surface; do not break paper or gypsum core.

Fixing strap	<b>Gypframe GFS1 Fixing Strap</b>
Used to support horizontal board joints in face layer of multiple layer board linings and enable board screw fixing at 300mm centres.	
Sealant	<b>Gyproc Sealant</b>

Locate sealant at junctions with adjoining structure and other air paths. Apply as a continuous bead to clean, dry, dust-free surfaces, leaving no gaps. After application of sealant, bulk fill gaps between floor and underside of plasterboard using Gyproc joint compound.

## Finish coat

Finish coat, Side 1	<b>Thistle MultiFinish</b>	Thickness, Side 1 (mm)	<b>2</b>
Finish coat, Side 2	<b>Thistle MultiFinish</b>	Thickness, Side 2 (mm)	<b>2</b>

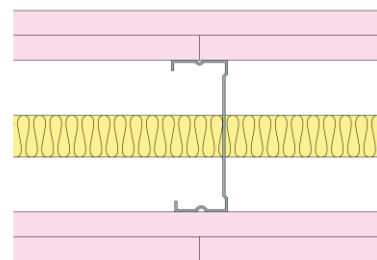
# Technical Specification

This document provides guidance on how to achieve performance and warranty requirements by exclusively using British Gypsum products or system specifications.

GypWall Single Frame

## A206274S (A) (EN)

Two layers of Gyproc FireLine 15mm each side of Gypframe 92 S 50 'C' Studs at 600mm centres. 25mm Isover Acoustic Partition Roll (APR 1200) in the cavity with 2mm Thistle MultiFinish on each side. For heights up to 4200mm.



## System performance

Please read performance data with any associated standards.

Fire integrity (mins)	<b>120</b>
Maximum height (mm)	<b>4200</b>

Fire insulation (mins)	<b>120</b>
------------------------	------------

The maximum heights quoted are limited by the fire state field of application or by limiting deflection of L/240 at 200 Pa, whichever is the lower of the two.

Sound insulation (Airborne) Rw (dB)	<b>53</b>
-------------------------------------	-----------

Including skim finish to both sides.

Duty rating	<b>Severe</b>
Partition thickness (mm)	<b>158</b>
Approx. weight (kg/m <sup>2</sup> )	<b>48</b>

## Standards

These standards relate to the above performance data.

BS EN 1364-1, Fire resistance tests for non-loadbearing elements - Walls.

BS 5234-2, Specification for performance requirements for strength and robustness including methods of test.

BS EN ISO 10140-2, Acoustics - Laboratory measurement of sound insulation of building elements. Measurement of airborne sound insulation.

## Further information

**SpecSure®** system performance warranty confirms that British Gypsum proprietary systems will perform as specified for the lifetime of the building. The **SpecSure®** warranty requires that all components are specified in full and constructed in accordance with British Gypsum's installation guidance. For more details see the British Gypsum website. Always check with the design team before making any changes to the chosen specification, ensuring appropriate substantiation is sought to confirm that the solution still meets all required project performances.