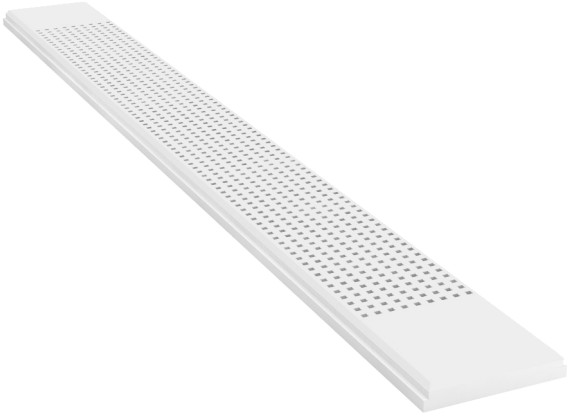


Product Data Sheet

Gyptone Quattro 55 Plank 2400mm E24/B

Gyptone Quattro 55 Plank is a gypsum corridor plank that combines a smart design with good sound performance. 12mm square perforations work with an acoustic fleece backing to absorb unwanted noise and make sounds like speech much clearer.

All Gyptone products contain ACTIVair® which makes indoor air healthier by eliminating up to 70% of formaldehyde present in indoor air.



Where to use

Use it with the GypCeiling Corridor System or GypCeiling Concealed to form a demountable suspended ceiling, providing up to Class C sound absorption performance.

Product information

Composition

Gypsum core with sound absorbent tissue bonded to the rear and a pre-painted face.

Face colour

White.

Face RAL colour reference

NCS 0500.

Backing tissue colour

Light grey.

DIMENSIONS AND WEIGHTS	
Lengths available (mm)	2400
Width (mm)	294
Nominal thickness (mm)	10
Perforated area (%)	16
Perforation shape	Square
Perforation width (mm)	12
Perforation length (mm)	12
Perforation spacing (mm)	25
Edge type availability	E24 (long edge) and B (short edge)
Weight per carton (kg)	45.56
Weight (kg/m ²)	7

Product Data Sheet

Gyptone Quattro 55 Plank 2400mm E24/B

Performance

Here we only provide performance information related to the product. Please see the White Book online for system-dependent performance.

Standards

EN 14190:2014.

Declarations of Performance (DoP) available [Click here](#).

Reaction to fire	A2-s1, d0
Acoustic absorption class	Class C
Sound absorption coefficient (α_w)	Up to 0.70
Specialist performance	Contains ACTIVair® technology
Moisture resistance (maximum % RH)	70
Loading capability (kg/tile)	1
Light reflectance (%)	70
Maximum continuous temperature (°C)	45

Limitations of use

Gyptone products should be used in areas with a relative humidity that does not constantly exceed 70% or temperature of 45°C.

Fixtures

Gyptone Plank products must not be subjected to additional loads. Hang lights and similar fixtures separately from wires or fix to structural soffit.

Installation guidance

Please see our White Book online for more information about installing and handling British Gypsum systems.

Painting

Supplied pre-painted, any repainting must be done with a shorthaired roller. The tiles must not be spray-painted, as this impairs sound absorption.

Product Data Sheet

Gyptone Quattro 55 Plank 2400mm E24/B

Sitework

Storage

Gyptone products should be stored flat on a level surface and protected from dampness. Take care to avoid damage to the acoustic tissue bonded to the back face.

Safety Data Sheet

Safety Data Sheet (SDS) available. [Click here.](#)

Packaging overview

Tiles per carton	8
Cartons per pallet	12
Tiles per pallet	96
Coverage per pallet (m ²)	69.12
Weight per pallet (tonnes)	0.4

Environmental

Recyclability

Gyptone products are 100% recyclable.

Disposal

British Gypsum operates a Plasterboard Recycling Service; please call 0800 6335040 for further information. Alternatively, segregate the product from non-gypsum waste for recycling where possible, and dispose of it according to local authority requirements.



SAINT-GOBAIN

British Gypsum
 Head Office, East Leake,
 Loughborough,
 Leicestershire, LE12 6HX
 T: 0115 945 1000



"Gyproc", "Thistle", "ThistlePro", "Gypframe" and "Glasroc" are all registered trademarks of Saint-Gobain Construction Products UK Limited. "Isover" is a registered trademark of Saint-Gobain Isover (French legal entity) and "Artex" is a registered trademark of Saint-Gobain Construction Products UK Limited.

Saint-Gobain Construction Products UK Limited is a limited company registered in England under company number 734396, having its registered office at Saint-Gobain House, East Leake, Loughborough, Leicestershire, LE12 6JU, UK. Saint-Gobain Construction Products UK Limited trades as British Gypsum for part of its business activities.

British Gypsum reserves the right to revise product specification without notice. The information herein should not be read in isolation as it is meant only as guidance for the user, who should always ensure that they are fully conversant with the products and systems being used and their subsequent installation prior to the commencement of work. For a comprehensive and up-to-date library of information visit the British Gypsum website at: british-gypsum.com. For information about products supplied by Artex Limited or Saint-Gobain Isover please see their respective websites.

"British Gypsum" is a registered trademark of Saint-Gobain Construction Products UK Limited.