

# Gyproc® Graphite Fire Sealant

## Product Data Sheet



Gyproc Graphite Fire Sealant is a water based high expansion graphite sealant designed to maintain the fire performance of compartment walls and floors where services penetrate.

### Where to use

Designed to seal combustible pipes, cables and metallic pipes insulated with combustible insulation where they pass through compartment walls and floors.

Gyproc Graphite Fire Sealant can be used with a stone mineral wool backing to ensure correct width to depth ratio.

### Application

Suitable for firestopping service penetrations:

- Cables, bundled cables, cable trays
- Metal pipework
- Plastic pipework

In load-bearing floors, wall penetrations in rigid/flexible walls.

### Technical properties

#### Composition

Water based graphite sealant

#### Colour

Dark grey

#### Expansion ratio

1 : 25

#### Air permeability

POSITIVE PRESSURE (Pa)	POSITIVE LEAKAGE (m <sup>3</sup> /h/m <sup>2</sup> )	NEGATIVE PRESSURE (Pa)	NEGATIVE LEAKAGE (m <sup>3</sup> /h/m <sup>2</sup> )
25	0.00	25	0.00
50	0.00	50	0.00
100	0.00	100	0.00
200	0.00	200	0.00
300	0.00	300	0.02
450	0.03	450	0.26
600	0.13	600	0.12

### Performance

Here we only provide performance information related to the product.

<b>Fire resistance</b>	Up to 4 hours*
<b>Tested to</b>	EN 1366-3 Fire resistance tests for service installations - penetration seals
<b>Classification</b>	According to BS EN 13501-2 - Up to EI 240*
<b>UKTA</b>	0843-UKTA-25/0025 (Penetration Seals)
<b>EAD</b>	350454-00-1104 (Penetration Seals)
<b>Reaction to fire</b>	Euroclass B-s1, d0 According to BS EN 13501-1
<b>Application temperature</b>	+4 °C to +30 °C
<b>Service temperature</b>	-15 °C to +75 °C
<b>Flexibility</b>	12.5 % in mortar/concrete/masonry to EN ISO 9046
<b>Working life</b>	25 years

\* Check Standard Details for application information

# Gyproc® Graphite Fire Sealant

## Product Data Sheet

### Curing time

A film forms at approximately 30 minutes. The graphite becomes tack-free at 60 minutes and is solid after 3-5 days depending on thickness and environmental conditions. Full cure may take up to 30 days.

### Sitework

#### Packaging Overview

- 300 ml and 600 ml foil sausages
- 310 ml cartridges
- Boxes: 600 ml foils (12 pcs), 300 ml foils and 310 ml cartridges (25 pcs)

#### Storage

To be stored in temperatures between +5 °C and +30 °C.

#### Shelf life

Minimum 18 months storage if stored in unopened cartridges.

#### Handling

British Gypsum fully accepts its responsibilities as a supplier of building materials and systems as required by Section 6 of the Health and Safety at Work etc. Act 1974. To reduce manual handling risk, employers and workers should follow HSE's Manual Handling Operations Regulations 1992 (MHOR) and the HSE's guidance on manual handling at work (INDG143). Employers should carry out a risk assessment and implement control measures to avoid or minimise the need for manual handling. Workers should follow safe lifting and moving techniques and report any hazards.

#### Tools required

- Sharp knife/snips
- Sealant gun
- Spatula

#### Ancillary items

- Stone mineral wool

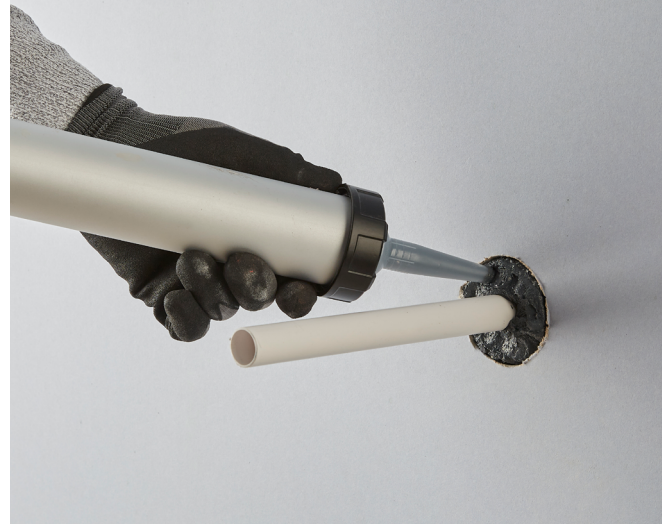
### Environmental

#### Recyclability

This product cannot be recycled.

#### Disposal

Waste should be disposed of in accordance with local authority requirements.



### Installation guidance

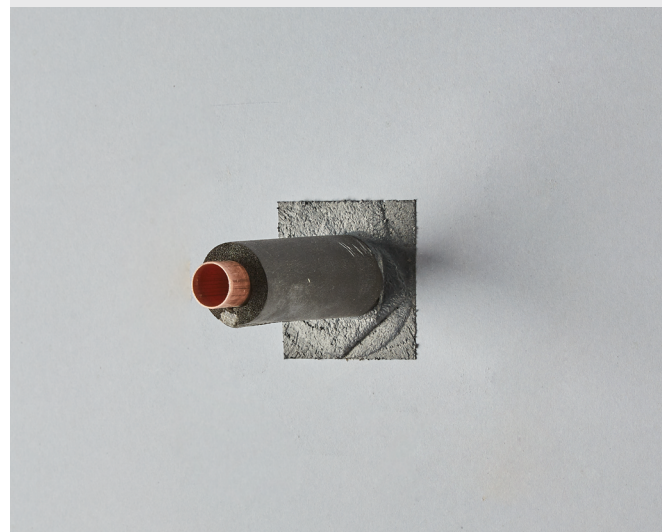
#### Application

Thoroughly clean the area before use. No priming necessary for application to most materials.

Gyproc Graphite Fire Sealant will cure when exposed to the atmosphere, retaining a degree of elasticity to accommodate joint movement. In the event of a fire, Gyproc Graphite Fire Sealant reacts, forming an intumescent char ensuring a robust seal.

#### Limitations of use

Please refer to the Gyproc Firestopping Installation Guide for full limitations of use. Should not be used in permanently damp areas or in joints with high movement.



# Gyproc® Graphite Fire Sealant

Product Data Sheet

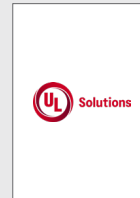
## Supporting Documents



Safety Data Sheet (SDS)



Install Guide and Video



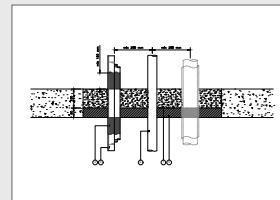
UK Technical Assessments (UKTA)



Declaration of Performance (DoP)



Certificate of Conformance (CoC)



Standard Details

**SAINT-GOBAIN**

**British Gypsum**  
Head Office, East Leake,  
Loughborough,  
Leicestershire, LE12 6HX  
T: 0115 945 1000  
british-gypsum.com

	ISO 9001 Quality Management	ISO 45001 Occupational Health and Safety Management	ISO 14001 Environmental Management	ISO 50001 Energy Management
	FM550533	OHS550586	EMS543324	ENMS606206

"Gyproc", "Thistle", "ThistlePro", "Gypframe" and "Glasroc" are all registered trademarks of Saint-Gobain Construction Products UK Limited. "Isover" is a registered trademark of Saint-Gobain Isover (French legal entity) and "Okarno" is a registered trademark of Okarno Limited.

Saint-Gobain Construction Products UK Limited is a limited company registered in England under company number 734396, having its registered office at Saint-Gobain House, East Leake, Loughborough, Leicestershire, LE12 6JU, UK. Saint-Gobain Construction Products UK Limited trades as British Gypsum for part of its business activities.

British Gypsum reserves the right to revise product specification without notice. The information herein should not be read in isolation as it is meant only as guidance for the user, who should always ensure that they are fully conversant with the products and systems being used and their subsequent installation prior to the commencement of work. For a comprehensive and up-to-date library of information visit the British Gypsum website at: british-gypsum.com. For information about products supplied by Okarno Limited or Saint-Gobain Isover please see their respective websites.

"British Gypsum" is a registered trademark of Saint-Gobain Construction Products UK Limited.