

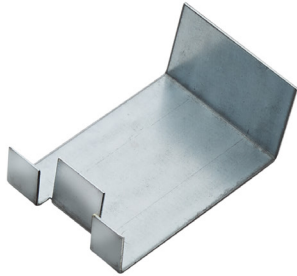
Product data sheet

Gypframe® SC2 Spacer Clip

Steel spacer clip.

Where to use

The spacer clip component is positioned at the top and bottom of a Gypframe 92 I 90 'I' Stud to aid securing of stud in the channel. When used in the GypWall Staggered system, where a deflection head is required secure clip with a British Gypsum Wafer Head Jack-Point Screw.



Certifications

Environmental Product Declaration (EPD) available [Click here.](#)

Product information

Composition

Steel.

Where to buy

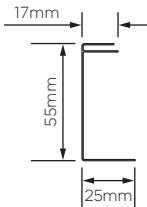
[Click here.](#)

Colour

Steel.

DIMENSIONS AND WEIGHTS

| | |
|--------------------------|---------|
| Bespoke length available | No |
| Width (mm) | 25 x 55 |
| Gauge (mm) | - |
| Weight (kg/lm) | - |



Performance

Here we only provide performance information related to the product. Please see the White Book online for system-dependent performance.

Standards

No harmonised standard.

| | |
|-------------------------------------|-----|
| Reaction to fire | A1 |
| Yield strength (N/mm ²) | 140 |

Installation guidance

Please see our White Book online for more information about installing and handling British Gypsum systems and Gypframe profiles. See the Gypframe Safety Data Sheet for guidance on health and safety, handling and storage.

Fixing compatibility

Check the system specification for the required British Gypsum screw type.

Product data sheet

Gypframe® SC2 Spacer Clip



Sitework

Safety Data Sheet

Gypframe metal components Safety Data Sheet (SDS) available. [Click here.](#)

Packaging overview

Supplied in a cardboard box.

| | |
|-------------------|-----|
| Quantity per pack | 100 |
|-------------------|-----|

Environmental

Recyclability

Gypframe components are 100% recyclable.

Disposal

Waste from Gypframe metal framing components is fully recyclable. The European Waste Catalogue code is 12 01 01.

British Gypsum
Head Office, East Leake,
Loughborough,
Leicestershire, LE12 6HX
T: 0115 945 1000



"Gyproc", "Thistle", "Gypframe" and "Glasroc" are all registered trademarks of Saint-Gobain Construction Products UK Limited. "Isover" is a registered trademark of Saint-Gobain Isover and "Artex" is a registered trademark of Saint-Gobain Construction Products UK Limited.

Saint-Gobain Construction Products UK Limited is a limited company registered in England under company number 734396, having its registered office at Saint-Gobain House, East Leake, Loughborough, Leicestershire, LE12 6JU, UK. Saint-Gobain Construction Products UK Limited trades as British Gypsum for part of its business activities.

British Gypsum reserves the right to revise product specification without notice. The information herein should not be read in isolation as it is meant only as guidance for the user, who should always ensure that they are fully conversant with the products and systems being used and their subsequent installation prior to the commencement of work. For a comprehensive and up-to-date library of information visit the British Gypsum website at: british-gypsum.com. For information about products supplied by Artex Limited or Saint-Gobain Isover please see their respective websites.

"British Gypsum" is a registered trademark of Saint-Gobain Construction Products UK Limited.