

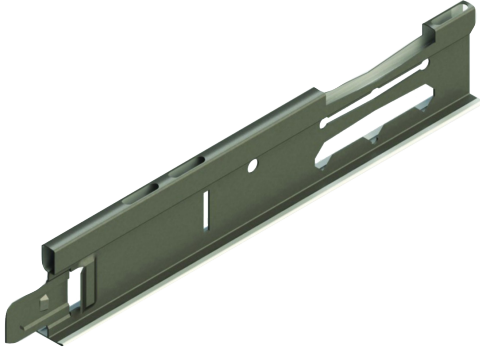
Product Data Sheet

CasoLine Quick-Lock Grid Main Tee 24/38

24mm Main Tee profile used to span the room as the primary component within the GypCeiling Grid and GypCeiling Concealed systems.

Where to use

Used with the T24 grid system for GypCeiling Grid and GypCeiling Concealed systems.



Product information

Composition

Galvanised Steel (DX51D+Z100).

Colour

Snow White (RAL9016).

DIMENSIONS AND WEIGHTS	
Lengths available (mm)	3600
Bespoke lengths available	No
Width (mm)	24
Weight (kg/lm)	0.37

Performance

Here we only provide performance information related to the product. Please see the White Book online for system-dependent performance.

Standards

EN 13964-2014.

Declarations of Performance (DoP) available [Click here](#).

Reaction to fire	A1
------------------	----

Product Data Sheet

CasoLine Quick-Lock Grid Main Tee 24/38

Installation guidance

Please see our White Book online for more information about installing and handling British Gypsum systems.

Cutting

Measure and cut with appropriate tin snips.

Sitework

Handling

Please refer to the HSE Manual Handling Operations Regulation for best practice guidance when handling or installing this product.

Safety Data Sheet

Safety Data Sheet (SDS) available. [Click here.](#)

Packaging overview

Supplied in cartons.

Quantity per carton	20
---------------------	----

Environmental

Recyclability

Ceiling grid components are 100% recyclable.

Disposal

Waste should be disposed of in accordance with local authority requirements.



SAINT-GOBAIN

British Gypsum
 Head Office, East Leake,
 Loughborough,
 Leicestershire, LE12 6HX
 T: 0115 945 1000



"Gyproc", "Thistle", "Gypframe" and "Glasroc" are all registered trademarks of Saint-Gobain Construction Products UK Limited. "Isover" is a registered trademark of Saint-Gobain Isover and "Artex" is a registered trademark of Saint-Gobain Construction Products UK Limited.

Saint-Gobain Construction Products UK Limited is a limited company registered in England under company number 734396, having its registered office at Saint-Gobain House, East Leake, Loughborough, Leicestershire, LE12 6JU, UK. Saint-Gobain Construction Products UK Limited trades as British Gypsum for part of its business activities.

British Gypsum reserves the right to revise product specification without notice. The information herein should not be read in isolation as it is meant only as guidance for the user, who should always ensure that they are fully conversant with the products and systems being used and their subsequent installation prior to the commencement of work. For a comprehensive and up-to-date library of information visit the British Gypsum website at: british-gypsum.com. For information about products supplied by Artex Limited or Saint-Gobain Isover please see their respective websites.

"British Gypsum" is a registered trademark of Saint-Gobain Construction Products UK Limited.